

**CITY OF COOS BAY
JOINT CITY COUNCIL / URA WORK SESSION
Agenda Staff Report**

MEETING DATE	AGENDA ITEM NUMBER
March 28, 2017	

TO: Mayor Benetti and City Councilors

FROM: Jim Hossley, Public Works and Development Director *JH*

THROUGH: Rodger Craddock, City Manager *REC*

ISSUE: Presentation and Discussion of HWY 101 Streetscape Plans

SUMMARY:

Wes Shoger from Greenworks, Inc will present the 90% streetscape design plan for HWY 101 north and south Coos Bay entrance points. If council approves of current design, Greenworks will bring the preliminary design to 100%. The City will prepare bid documents, and advertise to obtain a successful contractor to construct and manage the project.

ACTION REQUESTED:

Provide Greenworks with any revisions to the proposed design plans. Provide City staff with direction how Council wishes to proceed with the project.

BACKGROUND:

In 2015 City Council directed staff to obtain a consultant to perform a streetscape plan. The first step was to create renderings of what the potential improvement could look like for the main corridor's to Coos Bay; Broadway and Bayshore. Council was impressed with the streetscape renderings and directed staff to focus on the two entry points, north and south entrances into Coos Bay. The north location is north of ACE Hardware and old tank farm. The south location is south of Shell Gas station. Both locations abut Oregon Department of Transportation right-of-way and this project will most likely will require ODOT review.

BUDGET IMPLICATIONS:

Greenworks contract \$27,016.50

CITY OF COOS BAY GATEWAY IMPROVEMENTS

VICINITY MAP

NORTH GATEWAY



SOUTH GATEWAY



SUBMITTAL

90% CONSTRUCTION DOCUMENT SET
DATE: 03-22-2017

PROJECT SITE:

NORTH GATEWAY: NE 1/4 OF THE SE 1/4 SECTION 22 T. 25S.
R.13.W. W.M., TAX LOT 600 PARCEL 2 (TLID -
25S13W22DATL0060100)

SOUTH GATEWAY: ODOT R.O.W. MEDIAN BETWEEN HWY. 101
NORTHBOUND AND SOUTHBOUND LANES

SHEET INDEX

LANDSCAPE DRAWINGS:

NORTH GATEWAY

SHEET NO.	SHEET TITLE
G1.00	GENERAL INFORMATION
L1.00	EXISTING CONDITIONS PLAN - NORTH GATEWAY
L2.00	DEMOLITION PLAN - NORTH GATEWAY
L3.00	LAYOUT & MATERIALS PLAN - NORTH GATEWAY
L4.00	IRRIGATION PLAN - NORTH GATEWAY
L5.00	PLANTING PLAN - NORTH GATEWAY
L6.00	SITE DETAILS
L6.01	IRRIGATION DETAILS
L6.02	PLANTING DETAILS

SOUTH GATEWAY

SHEET NO.	SHEET TITLE
G1.00	GENERAL INFORMATION
L1.01	EXISTING CONDITIONS PLAN - SOUTH GATEWAY
L2.01	DEMOLITION PLAN - SOUTH GATEWAY
L3.01	LAYOUT & MATERIALS PLAN - SOUTH GATEWAY
L4.01	IRRIGATION PLAN - SOUTH GATEWAY
L5.01	PLANTING PLAN - SOUTH GATEWAY
L6.00	SITE DETAILS
L6.01	IRRIGATION DETAILS
L6.02	PLANTING DETAILS

PROJECT DIRECTORY

OWNER/CONTACT

CITY OF COOS BAY
501 N DIXON ST, PORTLAND, OR 97227
PHONE: 541-269-1181
PROJECT CONTACT: RANDY DIXON
PHONE: 503-916-3069
EMAIL: rdixon@coosbay.org

LANDSCAPE ARCHITECT

GREENWORKS, P.C.
24 NW 2ND AVENUE, SUITE 100
PORTLAND, OR 97209
www.greenworkspc.com
PROJECT CONTACT: WES SHOGER
PHONE: 503-222-5612
EMAIL: wess@greenworkspc.com

SURVEYOR

DYER PARTNERSHIP
ENGINEERS AND PLANNERS
1330 TEAKWOOD AVE.
COOS BAY, OR 97420
PHONE: 541-269-0732
WEB: www.dyerpart.com

GENERAL NOTES

1. SURVEY INFORMATION:
2. NORTH GATEWAY: SURVEY INFORMATION PROVIDED BY DYER PARTNERSHIP. VERTICAL DATUM IS BASED ON 1988 NAVD PER BM M751, RECORD ELEV = 11.43.
SOUTH GATEWAY: BASEMAP FURNISHED BY OREGON DEPARTMENT OF TRANSPORTATION (ODOT), UNDERGROUND, OVERHEAD UTILITIES AND ELEVATION DATA NOT AVAILABLE ON BASEMAP. FIELD VERIFY ALL UTILITIES PRIOR TO CONSTRUCTION.
3. ALL WORK PERFORMED IN CONNECTION WITH THE CONTRACT DOCUMENTS, INCLUDING MATERIALS FURNISHED, WORKMANSHIP, AND MEANS AND METHODS OF CONSTRUCTION SHALL CONFORM TO THE LATEST STANDARDS, PRACTICES AND REQUIREMENTS OF THE APPLICABLE FEDERAL, STATE AND LOCAL AUTHORITIES.
4. IT SHALL BE THE RESPONSIBILITY OF THE CONTRACTOR TO VERIFY ALL UTILITY LOCATIONS, DEPTHS AND ELEVATIONS PRIOR TO CONSTRUCTION AND ARRANGE FOR THE RELOCATION OF ANY IN CONFLICT WITH ALL CONSTRUCTION ACTIVITIES. THE LOCATIONS AND IDENTIFICATION OF UTILITIES WITHIN THIS DOCUMENT IS FOR INFORMATION ONLY AND IS NOT GUARANTEED TO BE ACCURATE. ANY DISCREPANCIES BETWEEN SURVEY INFORMATION AND FIELD CONDITIONS SHALL BE BROUGHT TO THE ATTENTION OF THE LANDSCAPE ARCHITECT IMMEDIATELY.
5. IT SHALL BE UNDERSTOOD THAT THE IMPROVEMENTS SHOWN IN THE DRAWINGS AND SPECIFICATIONS IS MEANT TO COMPLY WITH ALL APPLICABLE CODES AND ORDINANCES, DESIGN CHANGES, CONFLICTS, OR ISSUES THAT ARISE THAT WOULD CONTRADICT RELEVANT CODES AND ORDINANCES SHALL BE BROUGHT TO THE ATTENTION OF THE LANDSCAPE ARCHITECT IMMEDIATELY.
6. CONTRACTOR TO COMPLY WITH OREGON LAW REQUIRING ADHERENCE TO THE RULES ADOPTED BY THE OREGON UTILITY NOTIFICATION CENTER. THE CONTRACTOR MUST NOTIFY THE OREGON UTILITY NOTIFICATION CENTER AT LEAST 2 BUSINESS DAYS, BUT NOT MORE THAN 10 BUSINESS DAYS, BEFORE COMMENCING AN EXCAVATION. THOSE RULES ARE SET FORTH IN OAR 952-001-0610 THROUGH OAR 952-001-0690 AND ORS 757.541 TO 757.57. PHONE CONTACT FOR THE OREGON UTILITY NOTIFICATION CENTER IS 503-232-1987.
7. CONTRACTOR TO REPAIR AT OWN EXPENSE FOR ANY DAMAGE DONE TO UTILITY SYSTEMS, SURFACE PAVEMENTS, SITE FEATURES, AND STRUCTURES, WHETHER INSIDE OR OUTSIDE OF THE PROJECT LIMITS, THAT ARE NOT DIRECTLY INDICATED TO BE REMOVED OR RELOCATED AS PART OF THE PROJECT CONSTRUCTION.
8. CONTRACTOR SHALL BE RESPONSIBLE FOR ALL QUANTITIES SHOWN IN THE DRAWINGS OR SPECIFICATIONS. ANY QUANTITIES PROVIDED ARE FOR CONVENIENCE ONLY. LANDSCAPE ARCHITECT TO BE NOTIFIED IMMEDIATELY OF ANY DISCREPANCIES.
9. UPON PROJECT COMPLETION, THE PROJECT AREA AND ADJACENT SPACES SHALL BE FREE AND CLEAR OF ALL CONSTRUCTION MATERIALS, WASTE AND DEBRIS. CONTRACTOR TO REMOVE AND PROPERLY DISPOSE OF ALL MATERIALS AS INDICATED IN THE PROJECT CONTRACT DOCUMENTS AND MUST MEET ALL APPLICABLE REGULATIONS OVERSEEING WASTE DISPOSAL.

SYMBOLS LEGEND

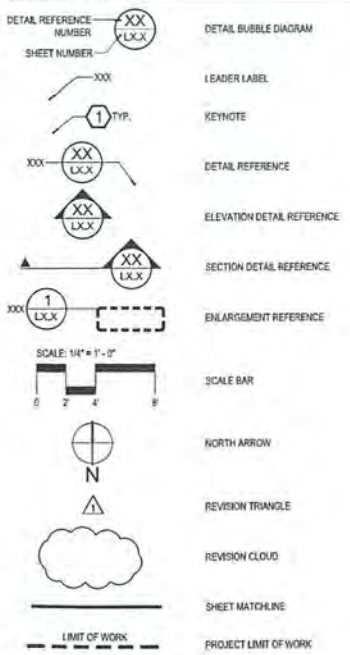


TABLE OF ABBREVIATIONS

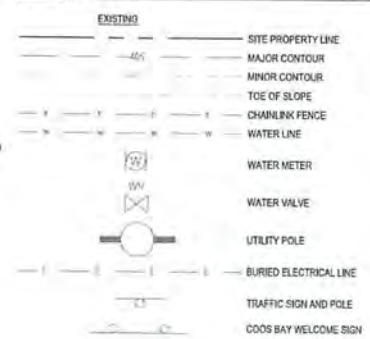
NOTE: NOT ALL ABBREVIATIONS REFERENCED IN DRAWINGS

@	AT	LP	LOW POINT
ALUM	ALUMINUM	MAX	MAXIMUM
APPROX	APPROXIMATE	MIN	MINIMUM
ARCH	ARCHITECT	MANHOLE	MANHOLE
AC	ASPHALT CONCRETE	NOT IN CONTRACT	NOT IN CONTRACT
BC	BOTTOM OF CURB	NTS	NOT TO SCALE
BAB	BALLED AND BURLAP	OH	OVER HEAD
BLDG	BUILDING	OC	ON CENTER
BM	BENCHMARK	OD	OUTSIDE DIAMETER
BS	BOTTOM OF STAR	OFCI	OWNER FURNISHED CONTRACTOR INSTALLED
BR	BOTTOM OF RAMP	PC	POINT OF CURVATURE
BOW	BOTTOM OF WALL (ELEV. BELOW FINISH GRADE)	PCC	POINT OF COMPOUND CURVATURE
BW	BOTTOM OF WALL (ELEV. AT FINISH GRADE)	PI	POINT OF INTERSECTION
CB	CATCH BASIN	PL	PROPERTY LINE
CF	CUBIC FEET	PLS	PURE LINE SEED
CAL	CALPER	POT	POINT OF TANGENCY
CJ	CONTROL JOINT	PT	PRESSURE TREATED
CLR	CLEAR	PERF	PERFORATED
CONV	CONVERTER	PP	POWER POLE
CP	CENTER POINT	PVC	POLYVINYL CHLORIDE PIPE
CT	CURRENT TRANSFORMER	R	RADIUS
DM	DIAMETER	REF	REFERENCE
DM	DIAMETER	REFR	REINFORCED
DEMO	DEMOLISH	RECD	RECURVED
DOM	DOMESTIC WATER LINE	ROW	RIGHT-OF-WAY
(E)	EXISTING	SAN	SANITARY
EA	EACH	SD	STORM DRAIN
EJ	EXPANSION JOINT	SEC	SECONDARY
ELC	EXTERIOR LIGHTING CONTROL	STA	STATION
ELEV	ELEVATION	STD	STANDARD
ENG	ENGINEER	TD	TRENCH DRAIN
EOP	EDGE OF PAVEMENT	TEL	TELEPHONE
EQ	EQUAL	TOPO	TOPOGRAPHY
EST	ESTIMATE	TC	TOP OF CURB
FG	FINISH GRADE	TR	TOP OF RAMP
FL	FLOW LINE	TS	TOP OF STAFF
FOC	FACE OF CURB	TYP	TYPICAL
FTG	FOOTING	TW	TOP OF WALL
GA	GAUGE	UGR	UNDERGROUND
GFI	GROUND FAULT INTERRUPTER	VAR	VARIES
GND	GROUND	VOL	VOLUME
HORIZ	HORIZONTAL	W	WITH
HP	HIGH POINT	W/O	WITHOUT
ID	INSIDE DIAMETER	WM	WATER METER
IE	INVERT ELEVATION	WP	WEATHER PROOF
JT	JOINT	WT	WEIGHT
LF	LINEAR FEET	WWM	WELDED WIRE MESH
		YD	YARD

DETAIL FRAME LEGEND



GENERAL LEGEND



Greenworks, P.C.
Landscape Architecture
Environmental Design
2000 NE Oregon Ave. Ste. 200
Astoria, OR 97103
Phone: 503.325.2222
Fax: 503.325.2222
Email: info@greenworks.com



Project: Coos Bay Gateway Improvements
City of Coos Bay
200 Commercial Park
Astoria, OR 97103
503.325.2222
Contact: Nancy Olson, info@coosbay.gov

Submitted: 9/05/2017
Sheet Title: General Information

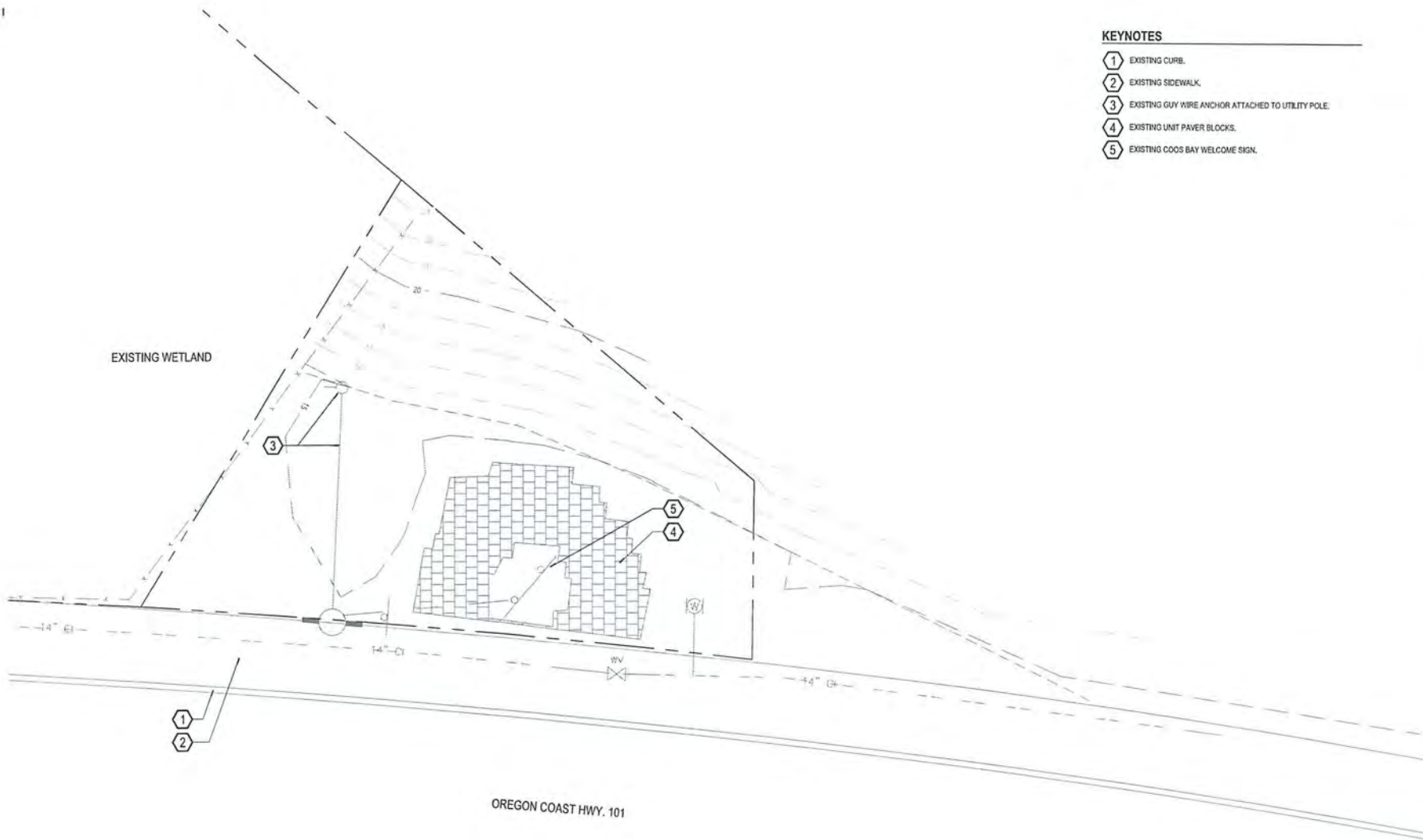
© 2017 Greenworks, P.C.
This drawing is the property of Greenworks, P.C.
No part of this drawing may be reproduced or transmitted in any form or by any means electronic, mechanical, photocopying, recording, or by any information storage and retrieval system, without the prior written permission of Greenworks, P.C.

Date: 03/22/2017
Revisions:

Drawn By: 777
Checked By: 777
Job No.: 116056.1
Approved: 777

G1.00

Sheet No. 1 of 14



KEYNOTES

- 1 EXISTING CURB.
- 2 EXISTING SIDEWALK.
- 3 EXISTING GUY WIRE ANCHOR ATTACHED TO UTILITY POLE.
- 4 EXISTING UNIT PAVER BLOCKS.
- 5 EXISTING COOS BAY WELCOME SIGN.

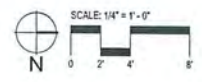


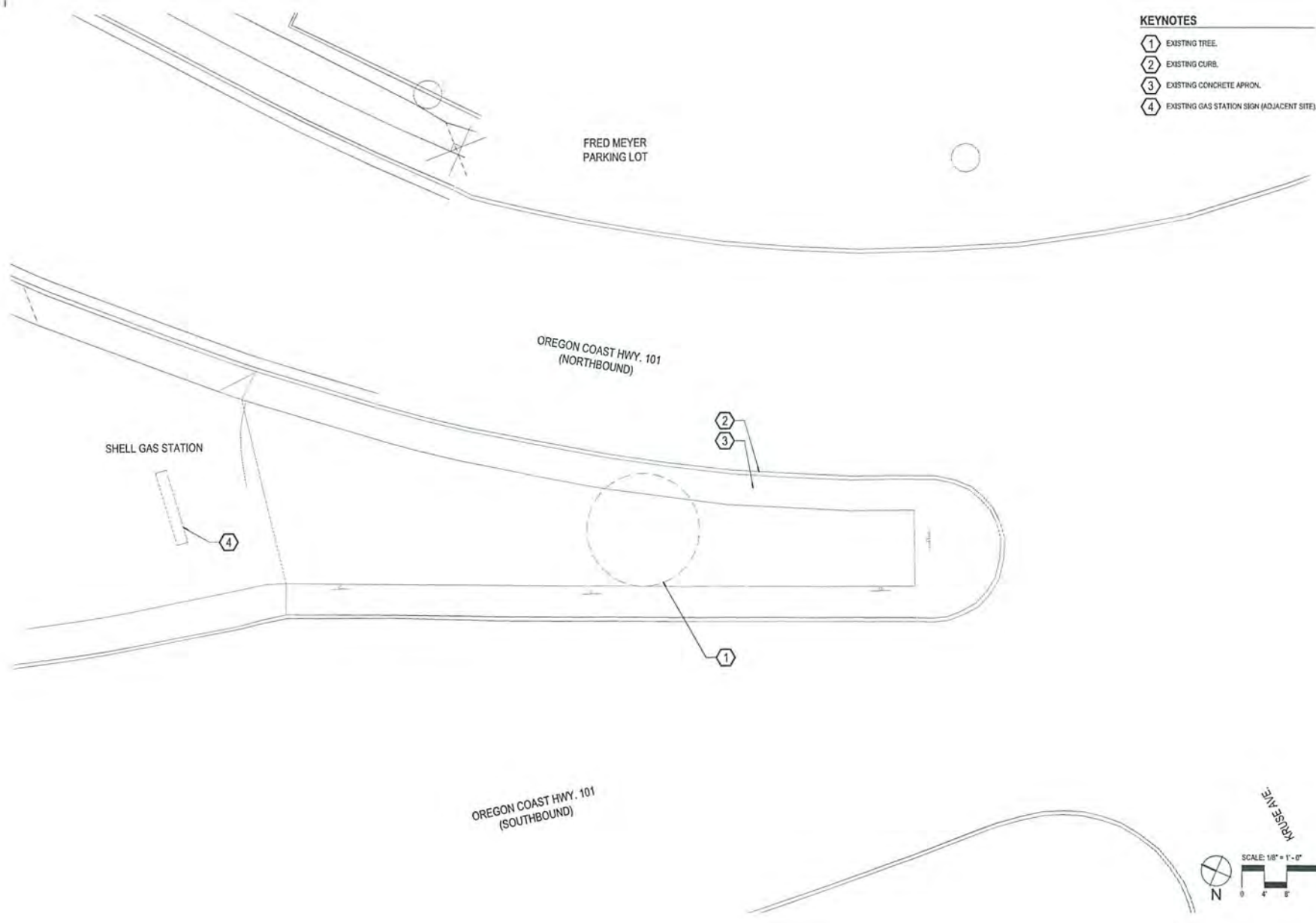
Project: **Coos Bay Gateway Improvements**
 City of Coos Bay
 300 James Street
 Coos Bay, OR 97331
 Contact: Nancy Olson, info@coosbay.org

Submitted: 90% CDs
 Sheet Title: **Existing Conditions Plan - North Gateway**

Date: 03/22/2017
 Revisions:
 Drawn By: WES
 Checked By: RAT
 Job No.: 116056.1
 Approved: MF

L1.00
 Sheet No. X of 14





- KEYNOTES**
- 1 EXISTING TREE.
 - 2 EXISTING CURB.
 - 3 EXISTING CONCRETE APRON.
 - 4 EXISTING GAS STATION SIGN (ADJACENT SITE).



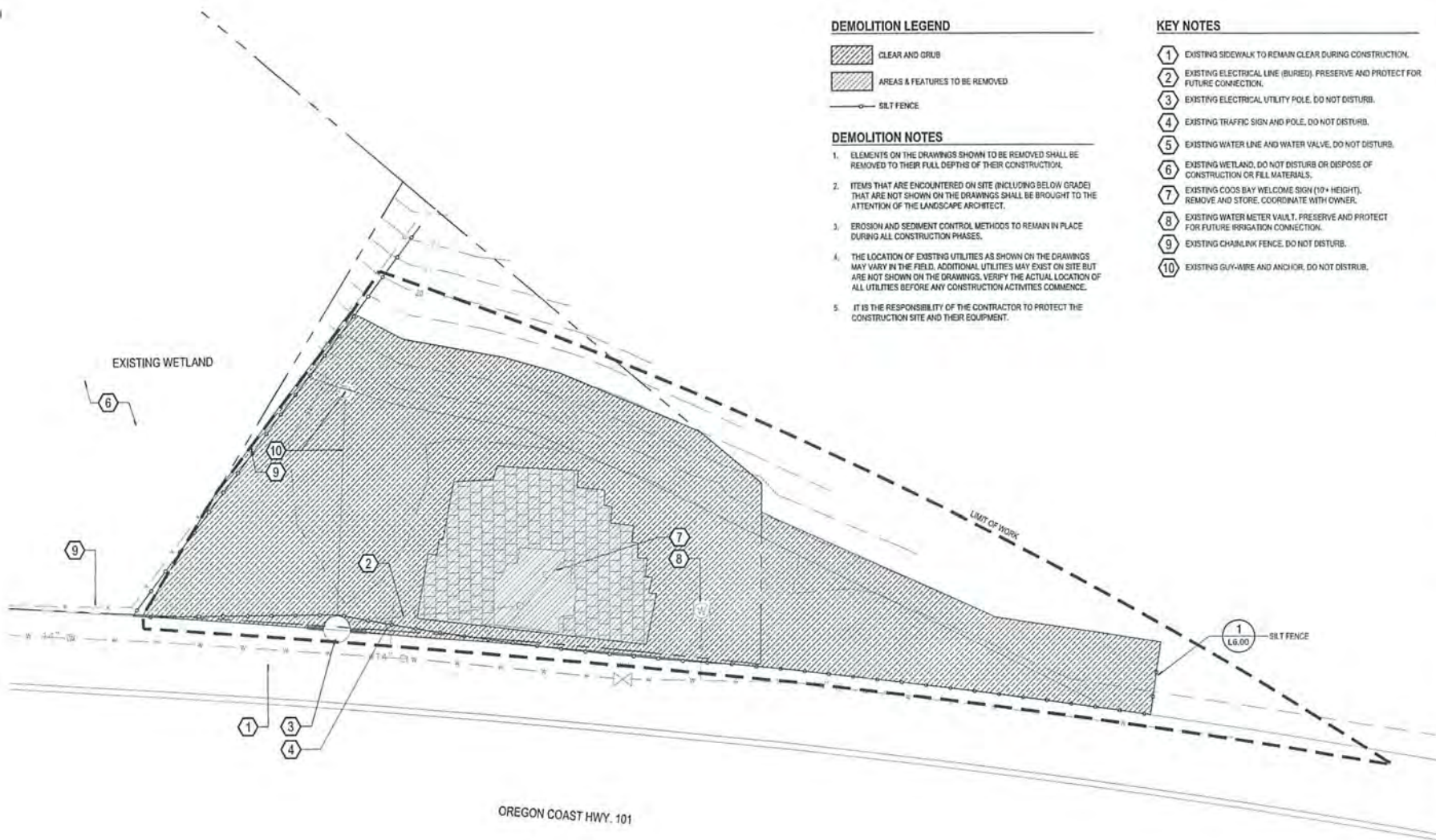
Project: **Coos Bay Gateway Improvements**
 City of Coos Bay
 500 Union Avenue
 Astoria, OR 97103
 Contact: Larry Olson: olsonl@coosbay.org

Submitted: 90% CDs
 Sheet Title: **Existing Conditions Plan - South Gateway**

Date: 03/22/2017
 Revisions:

Drawn By: WES
 Checked By: RAT
 Job No.: 116056.1
 Approved: MF

L1.01
 Sheet No. X of 14



DEMOLITION LEGEND

- CLEAR AND GRUB
- AREAS & FEATURES TO BE REMOVED
- SILT FENCE

DEMOLITION NOTES

1. ELEMENTS ON THE DRAWINGS SHOWN TO BE REMOVED SHALL BE REMOVED TO THEIR FULL DEPTHS OF THEIR CONSTRUCTION.
2. ITEMS THAT ARE ENCOUNTERED ON SITE (INCLUDING BELOW GRADE) THAT ARE NOT SHOWN ON THE DRAWINGS SHALL BE BROUGHT TO THE ATTENTION OF THE LANDSCAPE ARCHITECT.
3. EROSION AND SEDIMENT CONTROL METHODS TO REMAIN IN PLACE DURING ALL CONSTRUCTION PHASES.
4. THE LOCATION OF EXISTING UTILITIES AS SHOWN ON THE DRAWINGS MAY VARY IN THE FIELD. ADDITIONAL UTILITIES MAY EXIST ON SITE BUT ARE NOT SHOWN ON THE DRAWINGS. VERIFY THE ACTUAL LOCATION OF ALL UTILITIES BEFORE ANY CONSTRUCTION ACTIVITIES COMMENCE.
5. IT IS THE RESPONSIBILITY OF THE CONTRACTOR TO PROTECT THE CONSTRUCTION SITE AND THEIR EQUIPMENT.

KEY NOTES

- ① EXISTING SIDEWALK TO REMAIN CLEAR DURING CONSTRUCTION.
- ② EXISTING ELECTRICAL LINE (BURIED). PRESERVE AND PROTECT FOR FUTURE CONNECTION.
- ③ EXISTING ELECTRICAL UTILITY POLE. DO NOT DISTURB.
- ④ EXISTING TRAFFIC SIGN AND POLE. DO NOT DISTURB.
- ⑤ EXISTING WATER LINE AND WATER VALVE. DO NOT DISTURB.
- ⑥ EXISTING WETLAND. DO NOT DISTURB OR DISPOSE OF CONSTRUCTION OR FILL MATERIALS.
- ⑦ EXISTING COOS BAY WELCOME SIGN (10' HEIGHT). REMOVE AND STORE. COORDINATE WITH OWNER.
- ⑧ EXISTING WATER METER VAULT. PRESERVE AND PROTECT FOR FUTURE IRRIGATION CONNECTION.
- ⑨ EXISTING CHAINLINK FENCE. DO NOT DISTURB.
- ⑩ EXISTING GUY-WIRE AND ANCHOR. DO NOT DISTURB.

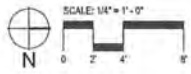


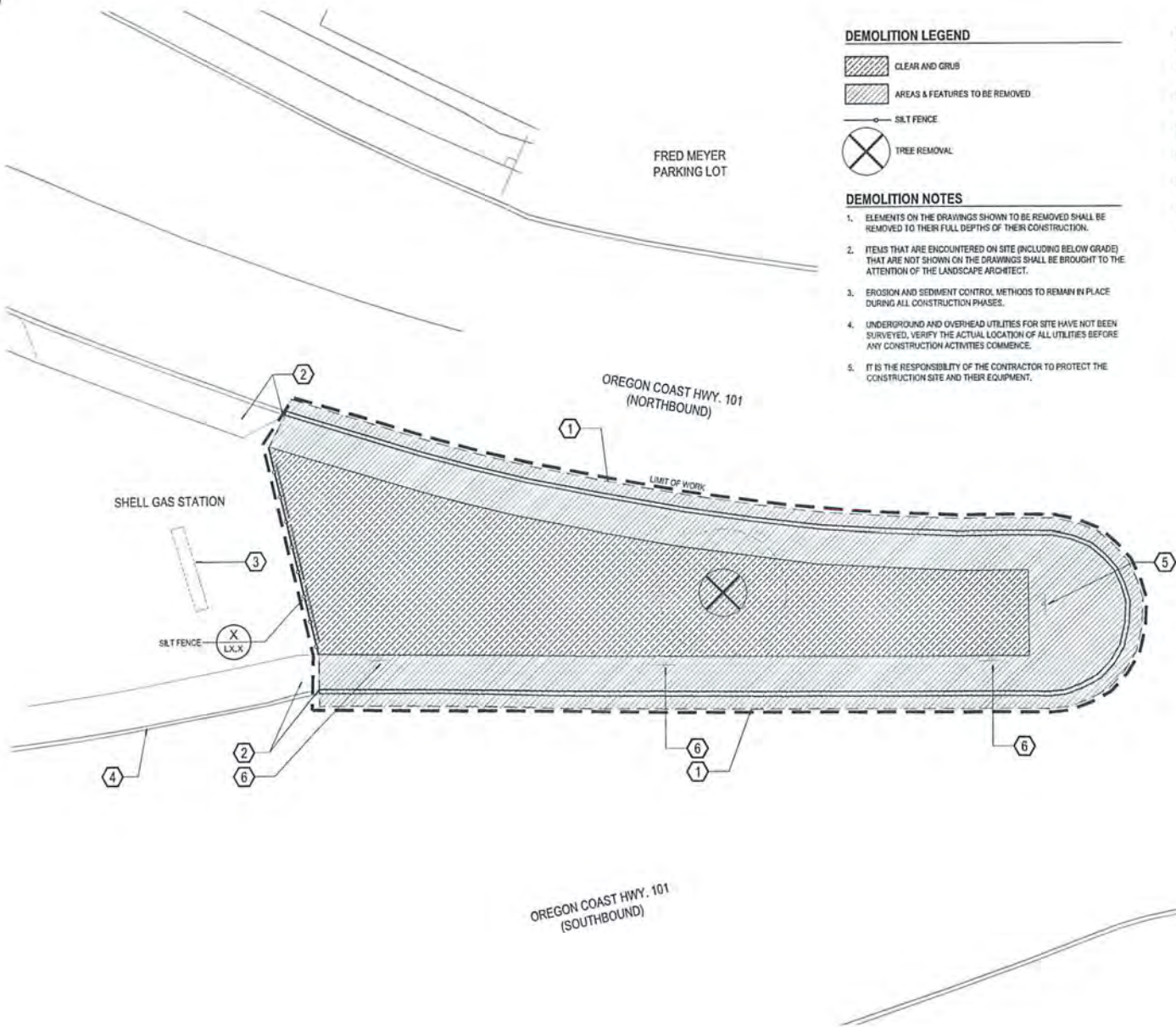
Project: **Coos Bay Gateway Improvements**
City of Coos Bay
300 West Avenue
Foster City, CA 94024
541-365-1311
Contact: Nancy Olson, nolson@gateway.org

Sequential: 80% CDs
Sheet Title: **Demolition Plan - North Gateway**
Date: 03/22/2017
Revisions:

Drawn By: YES
Checked By: RAT
Job No: 116258.1
Approval: MF

L2.00
Sheet No. X of 11





DEMOLITION LEGEND

-  CLEAR AND GRUB
-  AREAS & FEATURES TO BE REMOVED
-  SILT FENCE
-  TREE REMOVAL

DEMOLITION NOTES

1. ELEMENTS ON THE DRAWINGS SHOWN TO BE REMOVED SHALL BE REMOVED TO THEIR FULL DEPTHS OF THEIR CONSTRUCTION.
2. ITEMS THAT ARE ENCOUNTERED ON SITE (INCLUDING BELOW GRADE) THAT ARE NOT SHOWN ON THE DRAWINGS SHALL BE BROUGHT TO THE ATTENTION OF THE LANDSCAPE ARCHITECT.
3. EROSION AND SEDIMENT CONTROL METHODS TO REMAIN IN PLACE DURING ALL CONSTRUCTION PHASES.
4. UNDERGROUND AND OVERHEAD UTILITIES FOR SITE HAVE NOT BEEN SURVEYED. VERIFY THE ACTUAL LOCATION OF ALL UTILITIES BEFORE ANY CONSTRUCTION ACTIVITIES COMMENCE.
5. IT IS THE RESPONSIBILITY OF THE CONTRACTOR TO PROTECT THE CONSTRUCTION SITE AND THEIR EQUIPMENT.

KEY NOTES

- 1 2" WIDE SAWCUT LINE INTO ADJACENT ASPHALT. COORDINATE TRAFFIC CONTROL WITH CITY OF COOS BAY AND ODOT.
- 2 EXISTING DRIVEWAY. DO NOT DISTURB CONCRETE OR BASE COURSE IN DEMOLITION ACTIVITIES. REMOVE CURB AND SIDEWALK APRON UP TO TOP OF EXISTING DRIVEWAY RAMP/WING.
- 3 EXISTING SHELL SIGN. DO NOT DISTURB.
- 4 EXISTING CURB. DO NOT DISTURB.
- 5 EXISTING TRAFFIC SIGN. COORDINATE WITH CITY OF COOS BAY AND ODOT FOR TEMPORARY REMOVAL PROCEDURE.
- 6 EXISTING "NO PARKING" SIGN. COORDINATE WITH CITY OF COOS BAY AND ODOT FOR TEMPORARY REMOVAL PROCEDURE.



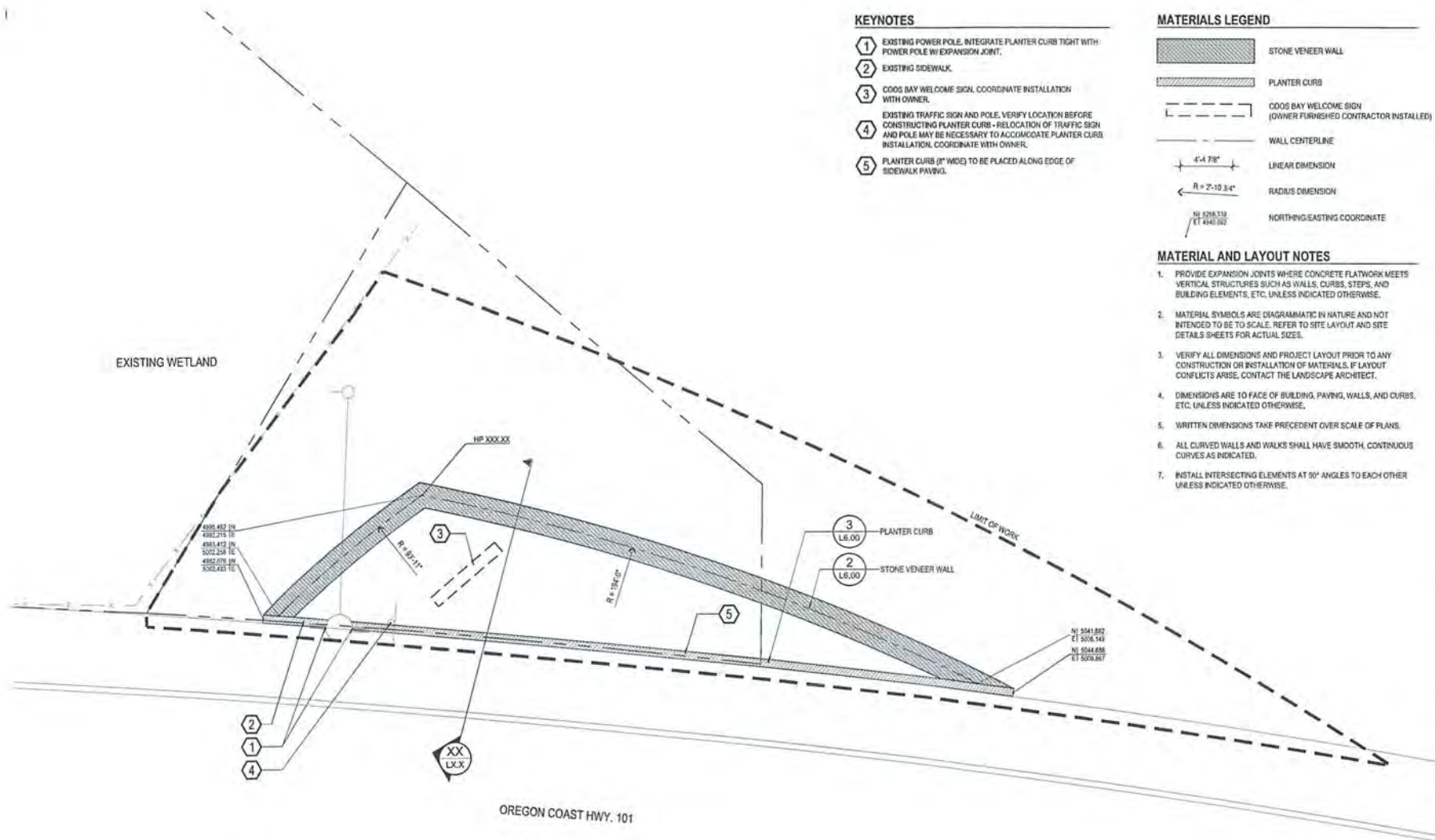
Project: **Coos Bay Gateway Improvements**
 City of Coos Bay
 500 Lewis Avenue
 Coos Bay, OR 97531
 Contact: Barry Chinn, info@greenworks.com

Submitted: 80% CDs
 Sheet Title: **Demolition Plan - South Gateway**

Date: 03/27/2017
 Revisions:

Drawn By: WFS
 Checked By: RAT
 Job No. 118056.1
 Approved: MF

L2.01
 Sheet No. X of 14



- KEYNOTES**
- ① EXISTING POWER POLE. INTEGRATE PLANTER CURB TIGHT WITH POWER POLE W/ EXPANSION JOINT.
 - ② EXISTING SIDEWALK.
 - ③ COOS BAY WELCOME SIGN. COORDINATE INSTALLATION WITH OWNER.
 - ④ EXISTING TRAFFIC SIGN AND POLE. VERIFY LOCATION BEFORE CONSTRUCTING PLANTER CURB - RELOCATION OF TRAFFIC SIGN AND POLE MAY BE NECESSARY TO ACCOMMODATE PLANTER CURB INSTALLATION. COORDINATE WITH OWNER.
 - ⑤ PLANTER CURB (8" WIDE) TO BE PLACED ALONG EDGE OF SIDEWALK PAVING.

- MATERIALS LEGEND**
- STONE VENEER WALL
 - PLANTER CURB
 - COOS BAY WELCOME SIGN (OWNER FURNISHED CONTRACTOR INSTALLED)
 - WALL CENTERLINE
 - LINEAR DIMENSION
 - RADIUS DIMENSION
 - NORTHING/EASTING COORDINATE

- MATERIAL AND LAYOUT NOTES**
1. PROVIDE EXPANSION JOINTS WHERE CONCRETE FLATWORK MEETS VERTICAL STRUCTURES SUCH AS WALLS, CURBS, STEPS, AND BUILDING ELEMENTS, ETC. UNLESS INDICATED OTHERWISE.
 2. MATERIAL SYMBOLS ARE DIAGRAMMATIC IN NATURE AND NOT INTENDED TO BE TO SCALE. REFER TO SITE LAYOUT AND SITE DETAILS SHEETS FOR ACTUAL SIZES.
 3. VERIFY ALL DIMENSIONS AND PROJECT LAYOUT PRIOR TO ANY CONSTRUCTION OR INSTALLATION OF MATERIALS. IF LAYOUT CONFLICTS ARISE, CONTACT THE LANDSCAPE ARCHITECT.
 4. DIMENSIONS ARE TO FACE OF BUILDING, PAVING, WALLS, AND CURBS, ETC. UNLESS INDICATED OTHERWISE.
 5. WRITTEN DIMENSIONS TAKE PRECEDENT OVER SCALE OF PLANS.
 6. ALL CURVED WALLS AND WALKS SHALL HAVE SMOOTH, CONTINUOUS CURVES AS INDICATED.
 7. INSTALL INTERSECTING ELEMENTS AT 90° ANGLES TO EACH OTHER UNLESS INDICATED OTHERWISE.



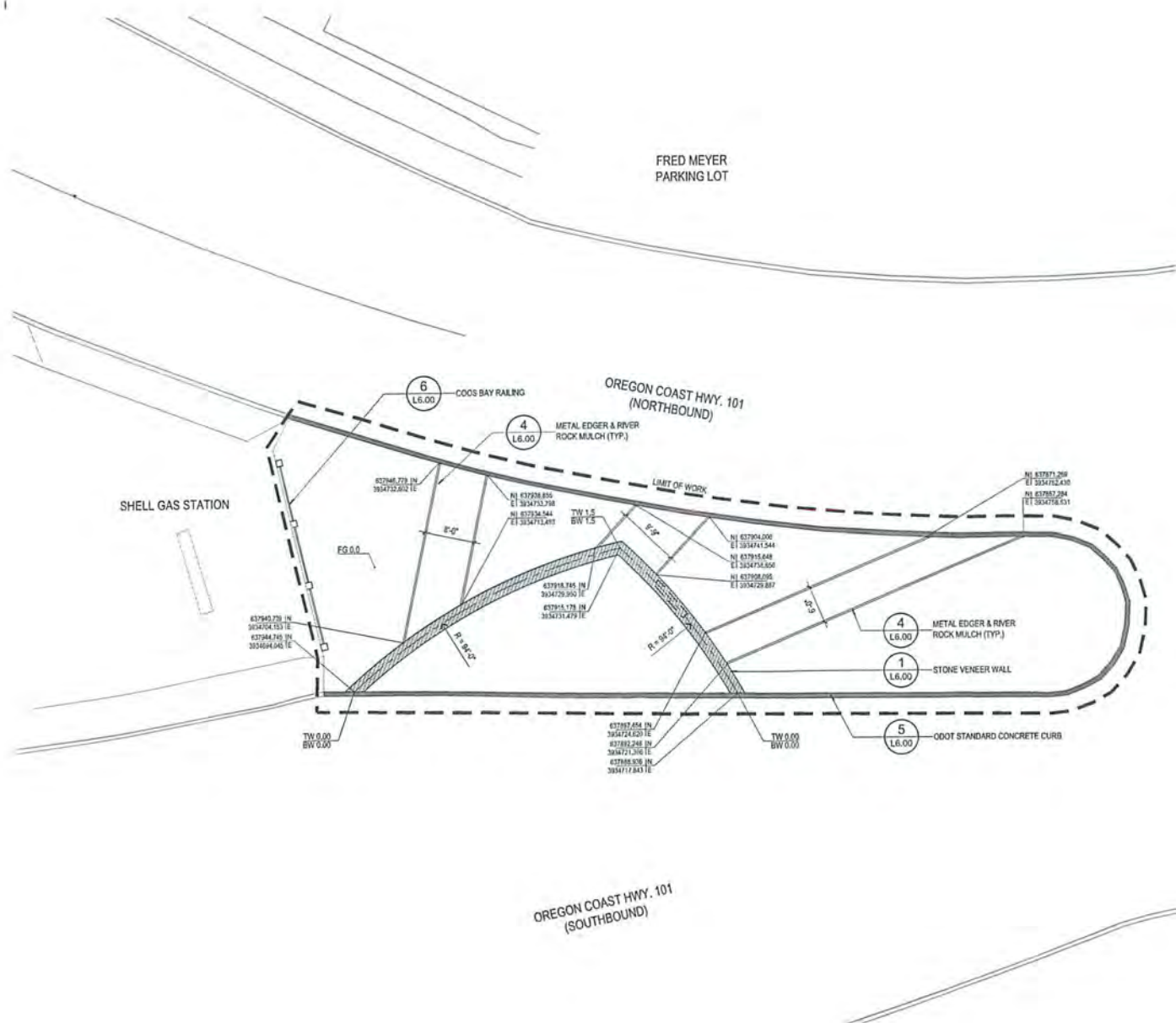
Project:
Coos Bay Gateway Improvements
 City of Coos Bay
 500 Leggett Avenue
 Coos Bay, OR 97426
 Contact: Nancy Olson, olson@goodcity.org

Submit: 90% CDs
 Sheet Title:
Layout & Materials Plan - North Gateway

Date: 03/22/2017
 Revisions:

Drawn By: 777
 Checked By: 777
 Job No. 118056.1
 Approved: 777

L3.00
 Sheet No. X of N



MATERIALS LEGEND

	STONE VENEER WALL
	STANDARD CONCRETE CURB
	METAL EDGER
	COOS BAY RAILING
	COOS BAY WELCOME SIGN (N.L.C. - COORDINATE WITH OWNER)
	WALL CENTERLINE
	LINEAR DIMENSION
	RADIUS DIMENSION
	NORTH-EASTING COORDINATE

- MATERIAL AND LAYOUT NOTES**
1. PROVIDE EXPANSION JOINTS WHERE CONCRETE FLATWORK MEETS VERTICAL STRUCTURES SUCH AS WALLS, CURBS, STEPS, AND BUILDING ELEMENTS, ETC. UNLESS INDICATED OTHERWISE.
 2. MATERIAL SYMBOLS ARE DIAGRAMMATIC IN NATURE AND NOT INTENDED TO BE TO SCALE. REFER TO SITE LAYOUT AND SITE DETAILS SHEETS FOR ACTUAL SIZES.
 3. VERIFY ALL DIMENSIONS AND PROJECT LAYOUT PRIOR TO ANY CONSTRUCTION OR INSTALLATION OF MATERIALS. IF LAYOUT CONFLICTS ARISE, CONTACT THE LANDSCAPE ARCHITECT.
 4. DIMENSIONS ARE TO FACE OF BUILDING, PAVING, WALLS, AND CURBS, ETC. UNLESS INDICATED OTHERWISE.
 5. WRITTEN DIMENSIONS TAKE PRECEDENT OVER SCALE OF PLANS.
 6. ALL CURVED WALLS AND WALKS SHALL HAVE SMOOTH, CONTINUOUS CURVES AS INDICATED.
 7. INSTALL INTERSECTING ELEMENTS AT 90° ANGLES TO EACH OTHER UNLESS INDICATED OTHERWISE.



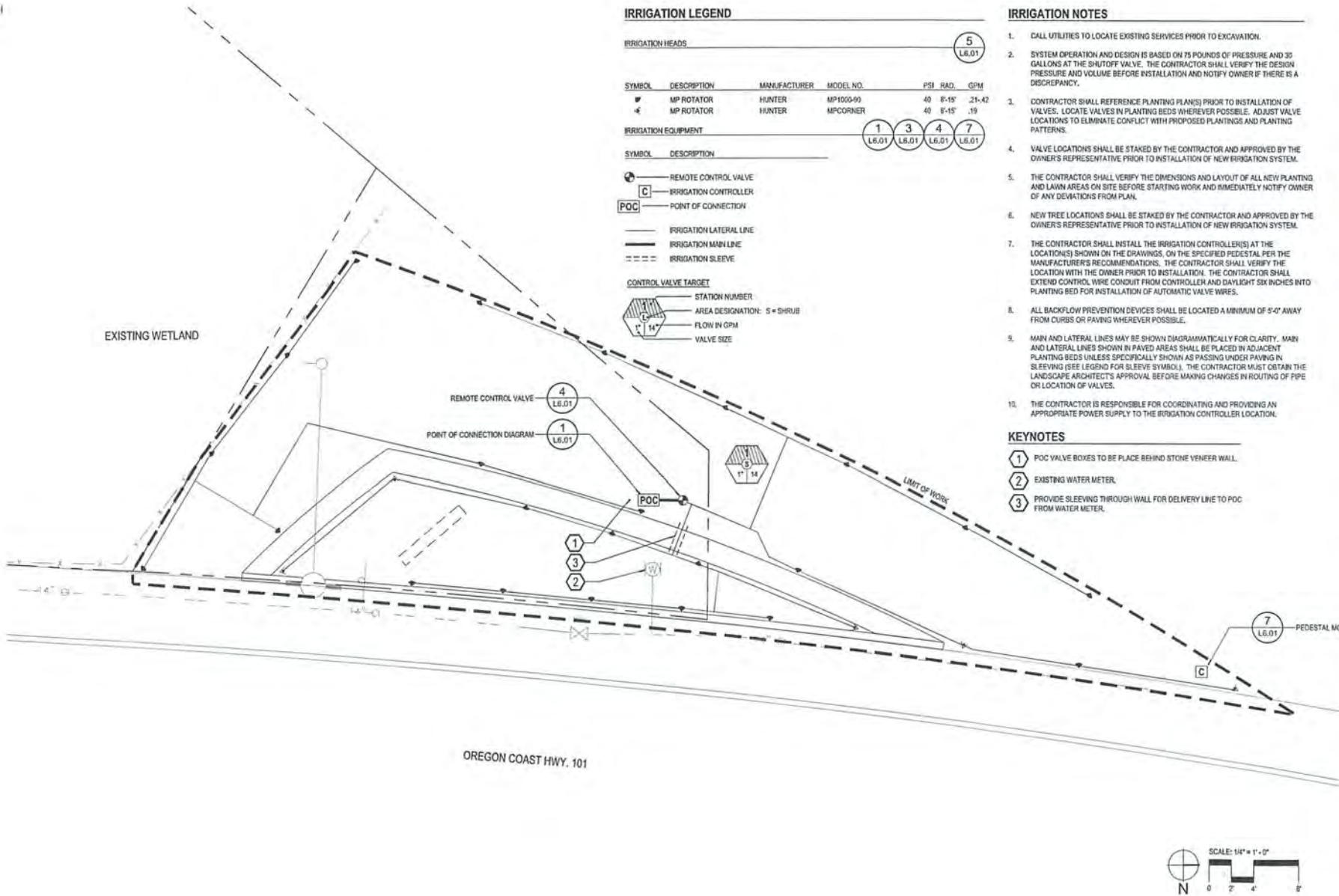
Project: **Coos Bay Gateway Improvements**
City of Coos Bay
200 Commercial Center
Coos Bay, Oregon 97331
Contact: Terry Dixon - tdx@coosbay.or.gov

Submitted: 9/10/17
Sheet Title: **Layout & Materials Plan South Gateway**

Date: 03/22/2017
Revised:

Drawn By: ???
Checked By: ???
Job No.: 116056.1
Approved: ???

L3.01
Sheet No. X of 14



IRRIGATION LEGEND

IRRIGATION HEADS

5
L6.01

SYMBOL	DESCRIPTION	MANUFACTURER	MODEL NO.	PSI	RAD.	GPM
⊙	MP ROTATOR	HUNTER	MP1000-90	40	8'-15"	.21-.42
⊙	MP ROTATOR	HUNTER	MPCORNER	40	8'-15"	.19

IRRIGATION EQUIPMENT

1 3 4 7
L6.01 L6.01 L6.01 L6.01

SYMBOL DESCRIPTION

- ⊕ REMOTE CONTROL VALVE
- C IRRIGATION CONTROLLER
- POC POINT OF CONNECTION

- IRRIGATION LATERAL LINE
- IRRIGATION MAIN LINE
- - - IRRIGATION SLEEVE

CONTROL VALVE TARGET

- STATION NUMBER
- AREA DESIGNATION: S = SHRUB
- FLOW IN GPM
- VALVE SIZE

IRRIGATION NOTES

- CALL UTILITIES TO LOCATE EXISTING SERVICES PRIOR TO EXCAVATION.
- SYSTEM OPERATION AND DESIGN IS BASED ON 75 POUNDS OF PRESSURE AND 30 GALLONS AT THE SHUTOFF VALVE. THE CONTRACTOR SHALL VERIFY THE DESIGN PRESSURE AND VOLUME BEFORE INSTALLATION AND NOTIFY OWNER IF THERE IS A DISCREPANCY.
- CONTRACTOR SHALL REFERENCE PLANTING PLAN(S) PRIOR TO INSTALLATION OF VALVES. LOCATE VALVES IN PLANTING BEDS WHEREVER POSSIBLE. ADJUST VALVE LOCATIONS TO ELIMINATE CONFLICT WITH PROPOSED PLANTINGS AND PLANTING PATTERNS.
- VALVE LOCATIONS SHALL BE STAKED BY THE CONTRACTOR AND APPROVED BY THE OWNER'S REPRESENTATIVE PRIOR TO INSTALLATION OF NEW IRRIGATION SYSTEM.
- THE CONTRACTOR SHALL VERIFY THE DIMENSIONS AND LAYOUT OF ALL NEW PLANTING AND LAWN AREAS ON SITE BEFORE STARTING WORK AND IMMEDIATELY NOTIFY OWNER OF ANY DEVIATIONS FROM PLAN.
- NEW TREE LOCATIONS SHALL BE STAKED BY THE CONTRACTOR AND APPROVED BY THE OWNER'S REPRESENTATIVE PRIOR TO INSTALLATION OF NEW IRRIGATION SYSTEM.
- THE CONTRACTOR SHALL INSTALL THE IRRIGATION CONTROLLER(S) AT THE LOCATION(S) SHOWN ON THE DRAWINGS, ON THE SPECIFIED PEDESTAL PER THE MANUFACTURER'S RECOMMENDATIONS. THE CONTRACTOR SHALL VERIFY THE LOCATION WITH THE OWNER PRIOR TO INSTALLATION. THE CONTRACTOR SHALL EXTEND CONTROL WIRE CONDUIT FROM CONTROLLER AND DAYLIGHT SIX INCHES INTO PLANTING BED FOR INSTALLATION OF AUTOMATIC VALVE WIRES.
- ALL BACKFLOW PREVENTION DEVICES SHALL BE LOCATED A MINIMUM OF 5'-0" AWAY FROM CURBS OR PAVING WHEREVER POSSIBLE.
- MAIN AND LATERAL LINES MAY BE SHOWN DIAGRAMMATICALLY FOR CLARITY. MAIN AND LATERAL LINES SHOWN IN PAVED AREAS SHALL BE PLACED IN ADJACENT PLANTING BEDS UNLESS SPECIFICALLY SHOWN AS PASSING UNDER PAVING IN SLEEVING (SEE LEGEND FOR SLEEVE SYMBOL). THE CONTRACTOR MUST OBTAIN THE LANDSCAPE ARCHITECT'S APPROVAL BEFORE MAKING CHANGES IN ROUTING OF PIPE OR LOCATION OF VALVES.
- THE CONTRACTOR IS RESPONSIBLE FOR COORDINATING AND PROVIDING AN APPROPRIATE POWER SUPPLY TO THE IRRIGATION CONTROLLER LOCATION.

KEYNOTES

- 1 POC VALVE BOXES TO BE PLACED BEHIND STONE VENEER WALL.
- 2 EXISTING WATER METER.
- 3 PROVIDE SLEEVING THROUGH WALL FOR DELIVERY LINE TO POC FROM WATER METER.



GreenWorks, P.C.
Landscape Architecture
Landscape Design
2000 NW Avenue 4th Fl.
Portland, Oregon 97209
Phone: 503.255.1111
Fax: 503.255.1111
Email: info@greenworks.org



Project: Coos Bay Gateway Improvements
City of Coos Bay
Contract # 18-003
5/1/2018
Contact: Nancy Deane, nancy@coosbay.org

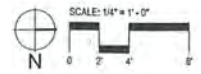
Submitted: 8/0% CDs
Sheet Title:

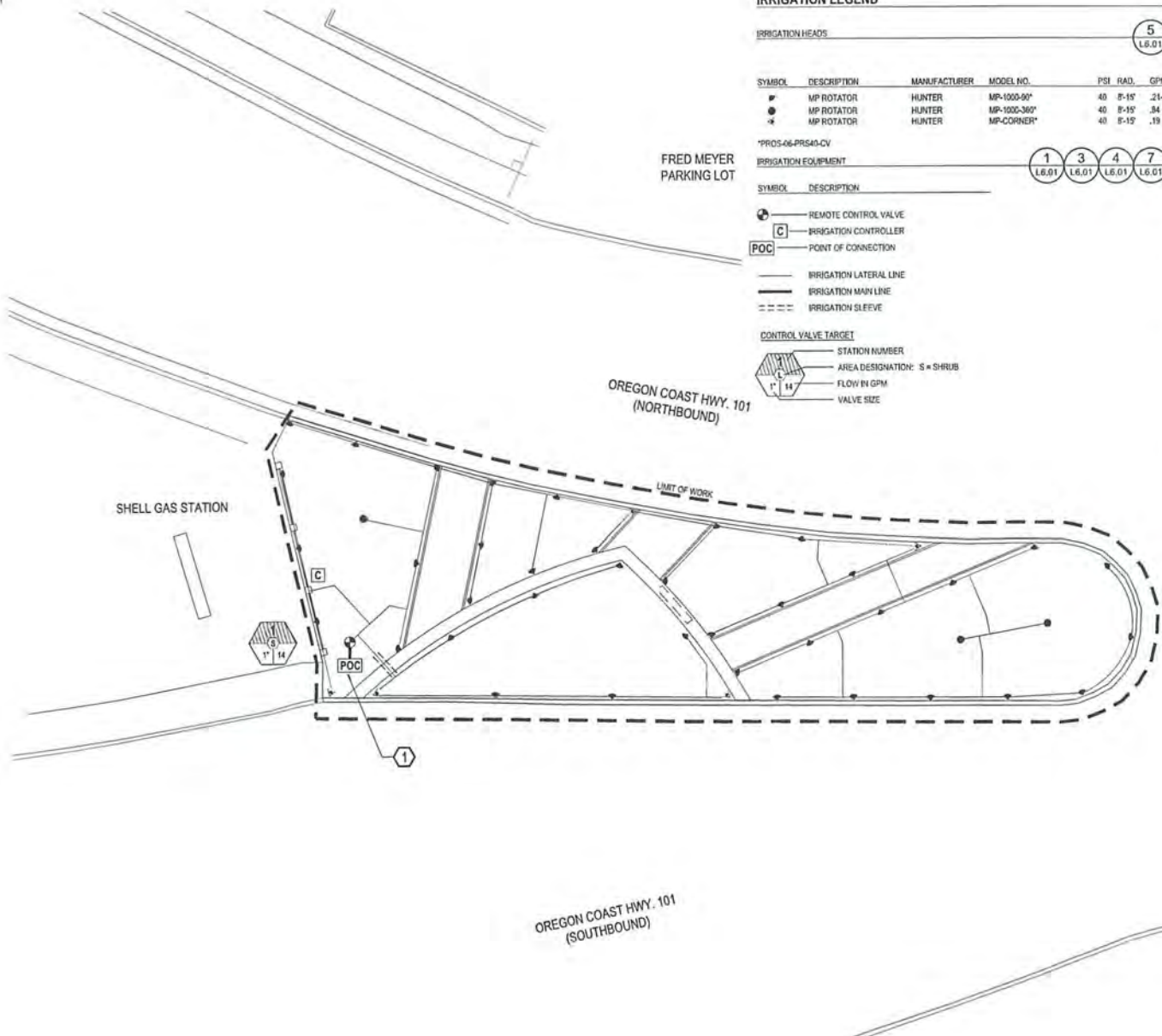
Irrigation Plan - North Gateway

Date: 03/22/2017
Revisions:

Drawn By: WES
Checked By: RAT
Job No.: 118056.1
Approver: MF

L4.00
Sheet No. 8 of 14





IRRIGATION LEGEND

IRRIGATION HEADS

SYMBOL	DESCRIPTION	MANUFACTURER	MODEL NO.	PSI	RAD.	GPM
●	MP ROTATOR	HUNTER	MP-1000-90°	40	8'-15"	21-42
●	MP ROTATOR	HUNTER	MP-1000-360°	40	8'-15"	34
●	MP ROTATOR	HUNTER	MP-CORNER	40	5'-15"	19

*PROS-06-PRS40-CV

IRRIGATION EQUIPMENT

SYMBOL	DESCRIPTION
⊕	REMOTE CONTROL VALVE
C	IRRIGATION CONTROLLER
POC	POINT OF CONNECTION

SYMBOL	DESCRIPTION
---	IRRIGATION LATERAL LINE
---	IRRIGATION MAIN LINE
---	IRRIGATION SLEEVE

CONTROL VALVE TARGET

SYMBOL	DESCRIPTION
14	STATION NUMBER
S	AREA DESIGNATION: S = SHRUB
14	FLOW IN GPM
14	VALVE SIZE

IRRIGATION NOTES

- CALL UTILITIES TO LOCATE EXISTING SERVICES PRIOR TO EXCAVATION.
- SYSTEM OPERATION AND DESIGN IS BASED ON 75 POUNDS OF PRESSURE AND 30 GALLONS AT THE SHUTOFF VALVE. THE CONTRACTOR SHALL VERIFY THE DESIGN PRESSURE AND VOLUME BEFORE INSTALLATION AND NOTIFY OWNER IF THERE IS A DISCREPANCY.
- CONTRACTOR SHALL REFERENCE PLANTING PLAN(S) PRIOR TO INSTALLATION OF VALVES. LOCATE VALVES IN PLANTING BEDS WHERE POSSIBLE. ADJUST VALVE LOCATIONS TO ELIMINATE CONFLICT WITH PROPOSED PLANTINGS AND PLANTING PATTERNS.
- VALVE LOCATIONS SHALL BE STAKED BY THE CONTRACTOR AND APPROVED BY THE OWNER'S REPRESENTATIVE PRIOR TO INSTALLATION OF NEW IRRIGATION SYSTEM.
- THE CONTRACTOR SHALL VERIFY THE DIMENSIONS AND LAYOUT OF ALL NEW PLANTING AND LAWN AREAS ON SITE BEFORE STARTING WORK AND IMMEDIATELY NOTIFY OWNER OF ANY DEVIATIONS FROM PLAN.
- NEW TREE LOCATIONS SHALL BE STAKED BY THE CONTRACTOR AND APPROVED BY THE OWNER'S REPRESENTATIVE PRIOR TO INSTALLATION OF NEW IRRIGATION SYSTEM.
- THE CONTRACTOR SHALL INSTALL THE IRRIGATION CONTROLLER(S) AT THE LOCATION(S) SHOWN ON THE DRAWINGS, ON THE SPECIFIED PEDESTAL PER THE MANUFACTURER'S RECOMMENDATIONS. THE CONTRACTOR SHALL VERIFY THE LOCATION WITH THE OWNER PRIOR TO INSTALLATION. THE CONTRACTOR SHALL EXTEND CONTROL WIRE CONDUIT FROM CONTROLLER AND DAYLIGHT SIX INCHES INTO PLANTING BED FOR INSTALLATION OF AUTOMATIC VALVE WIRES.
- ALL BACKFLOW PREVENTION DEVICES SHALL BE LOCATED A MINIMUM OF 5'-0" AWAY FROM CURBS OR PAVING WHEREVER POSSIBLE.
- MAIN AND LATERAL LINES MAY BE SHOWN DIAGRAMMATICALLY FOR CLARITY. MAIN AND LATERAL LINES SHOWN IN PAVED AREAS SHALL BE PLACED IN ADJACENT PLANTING BEDS UNLESS SPECIFICALLY SHOWN AS PASSING UNDER PAVING IN SLEEVING (SEE LEGEND FOR SLEEVE SYMBOL). THE CONTRACTOR MUST OBTAIN THE LANDSCAPE ARCHITECT'S APPROVAL BEFORE MAKING CHANGES IN ROUTING OF PIPE OR LOCATION OF VALVES.
- THE CONTRACTOR IS RESPONSIBLE FOR COORDINATING AND PROVIDING AN APPROPRIATE POWER SUPPLY TO THE IRRIGATION CONTROLLER LOCATION.

KEYNOTES

- POINT OF CONNECTION LOCATION SHOWN FOR REFERENCE ONLY. FIELD LOCATION MAY VARY. SURVEY LOCATION OF WATER UTILITIES NOT AVAILABLE FOR SOUTH GATEWAY. UTILITIES TO BE PROVIDED BY CITY.



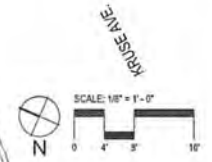
Project: **Coos Bay Gateway Improvements**
 City of Coos Bay
 500 West Avenue
 Seaside, OR 97138
 541-325-1111
 Contact: Nancy Drown, nador@coosbay.org

Submittal: 80% CDs
 Sheet Title: **Irrigation Plan - South Gateway**

Date: 03/22/2017
 Revisions:

Drawn By: 777
 Checked By: 777
 Job No.: 110056.1
 Approval: 777

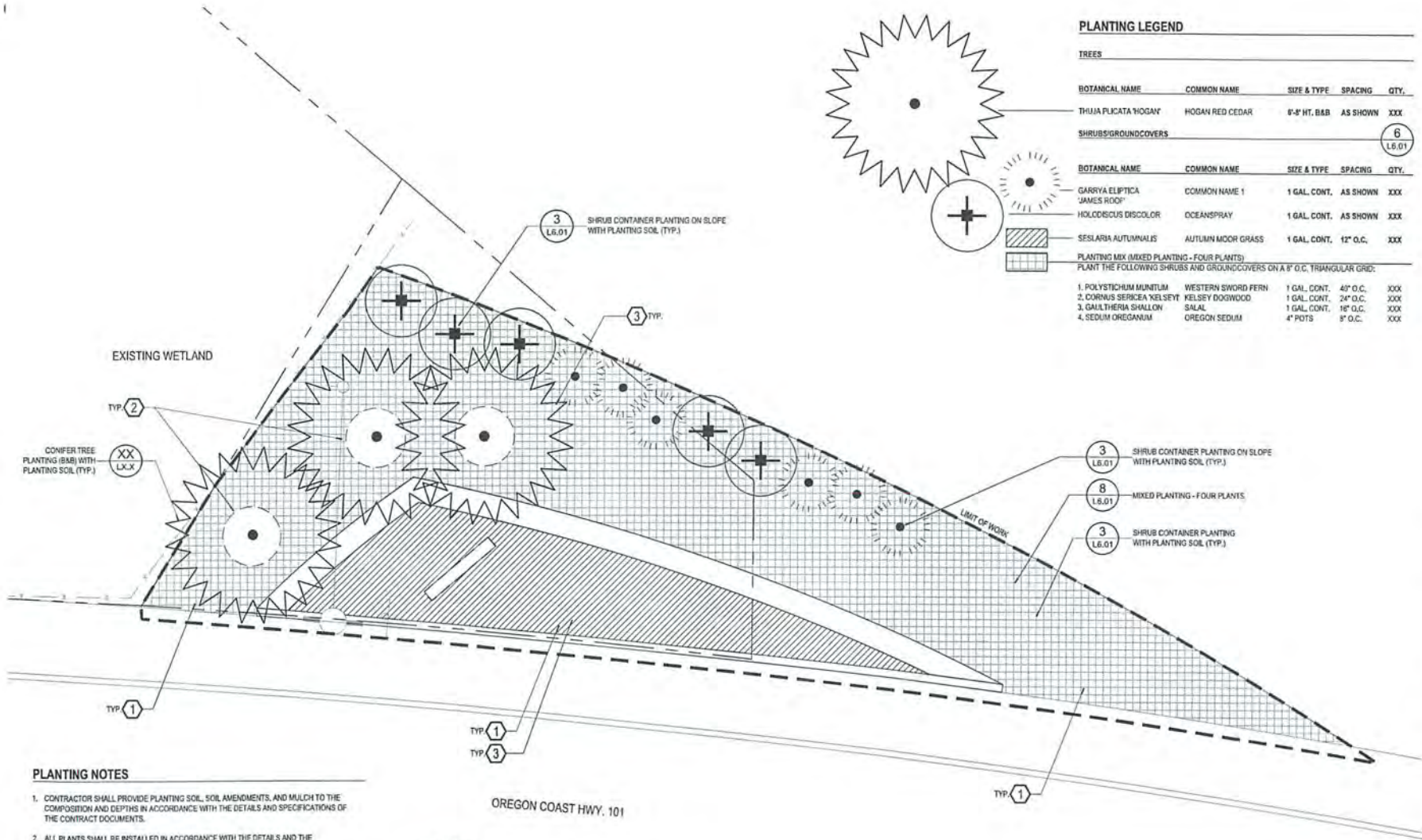
L4.01
 Sheet No. 8 of 14



CRS
 1/8" = 1'-0"

0 4 8 16

N



PLANTING LEGEND

TREES				
BOTANICAL NAME	COMMON NAME	SIZE & TYPE	SPACING	QTY.
THUJA PLICATA HOGAN	HOGAN RED CEDAR	6'-8" HT. B&B	AS SHOWN	XXX

SHRUBS/GROUNDCOVERS				
BOTANICAL NAME	COMMON NAME	SIZE & TYPE	SPACING	QTY.
GARRYIA ELIPTICA 'JAMES ROOF'	COMMON NAME 1	1 GAL. CONT.	AS SHOWN	XXX
HOLCISCUS DISCOLOR	OCEANSPRAY	1 GAL. CONT.	AS SHOWN	XXX
SESLARIA AUTUMNALIS	AUTUMN MOOR GRASS	1 GAL. CONT.	12" O.C.	XXX

PLANTING MIX (MIXED PLANTING - FOUR PLANTS)
 PLANT THE FOLLOWING SHRUBS AND GROUNDCOVERS ON A 6" O.C. TRIANGULAR GRID:

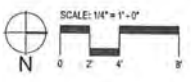
1. POLYSTICHUM MUNITUM	WESTERN SWORD FERN	1 GAL. CONT.	40" O.C.	XXX
2. CORNUS SERICEA 'KELSEY'	KELSEY DOGWOOD	1 GAL. CONT.	24" O.C.	XXX
3. GAILTHERIA SHALLOM	SALAL	1 GAL. CONT.	18" O.C.	XXX
4. SEDUM OREGANUM	OREGON SEDUM	4" POTS	8" O.C.	XXX

PLANTING NOTES

- CONTRACTOR SHALL PROVIDE PLANTING SOIL, SOIL AMENDMENTS, AND MULCH TO THE COMPOSITION AND DEPTHS IN ACCORDANCE WITH THE DETAILS AND SPECIFICATIONS OF THE CONTRACT DOCUMENTS.
- ALL PLANTS SHALL BE INSTALLED IN ACCORDANCE WITH THE DETAILS AND THE SPECIFICATIONS PROVIDED AS PART OF THE CONTRACT DOCUMENTS.
- QUANTITIES ARE LISTED FOR THE CONTRACTOR'S CONVENIENCE ONLY. ALL COUNTS MUST BE VERIFIED BY THE CONTRACTOR. IN THE CASE OF A DISCREPANCY BETWEEN THE LEGEND AND THE PLAN, THE PLAN SHALL SUPERCEDE QUANTITIES LISTED IN THE LEGEND.
- UTILITY LOCATIONS SHOWN ON PLANS MAY DIFFER FROM FIELD CONDITIONS. CONTRACTOR TO FIELD VERIFY ALL UTILITIES BEFORE INSTALLATION. CONFLICTS BETWEEN ANY EXISTING AND PROPOSED UTILITIES ARE TO BE BROUGHT TO THE ATTENTION OF THE LANDSCAPE ARCHITECT IMMEDIATELY.

KEYNOTES

- SHRUBS AND GROUNDCOVERS TO BE SPACED 6" + THEIR SPECIFIED ON-CENTER SPACING (O.C.) WHEN ADJACENT TO PAVED AREAS.
- PROVIDE A 6" DIAMETER BARK MULCH RING (2" DEPTH) FOR NEW TREES.
- ALL PLANTING AREAS TO RECEIVE 12" DEPTH OF PLANTING SOIL.

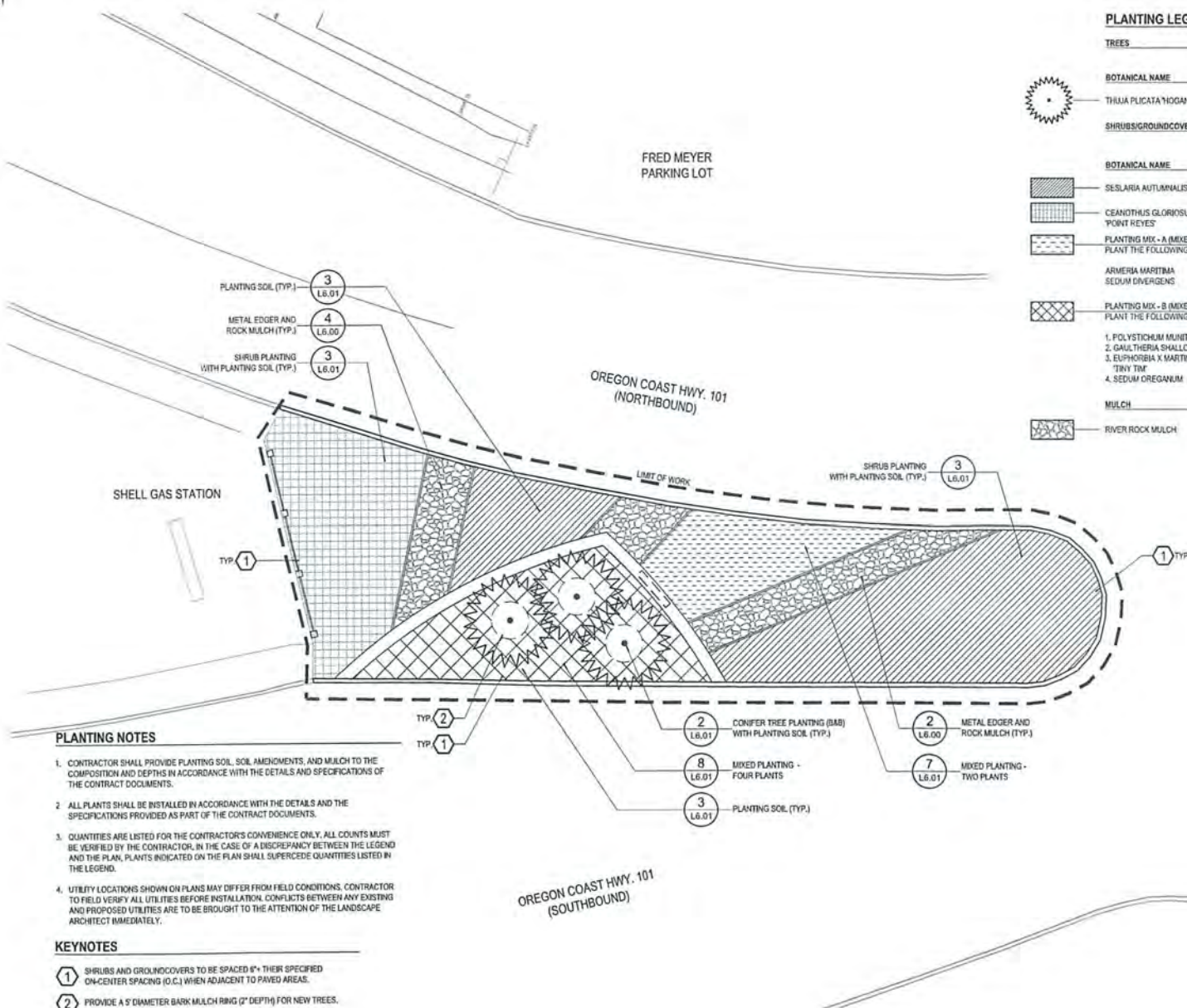


Project: **Coos Bay Gateway Improvements**
 City of Coos Bay
 300 S. Oregon Ave.
 Coos Bay, OR 97331
 Contact: Nancy Olson, nolson@coosbay.or.gov

Submitted: 90% CDs
 Sheet Title: **Planting Plan - North Gateway**

Date: 03/22/2017
 Revisions:
 Drawn By: WES
 Checked By: RAT
 Job No.: 116055.1
 Approved: MF

L5.00
 Sheet No. X of 14



PLANTING LEGEND

TREES

BOTANICAL NAME	COMMON NAME	SIZE & TYPE	SPACING	QTY.
TRIJUA PLICATA 'HOGAN'	HOGAN RED CEDAR	6'-8" HT. BAB	AS SHOWN	XXX

SHRUBS/GROUNDCOVERS/MULCH (6 L6.01)

BOTANICAL NAME	COMMON NAME	SIZE & TYPE	SPACING	QTY.
SESLARIA AUTUMNALIS	AUTUMN MOOR GRASS	1 GAL. CONT.	12" O.C.	XXX
CEANOTHUS GLORIOSUS 'POINT REYES'	POINT REYES CEANOTHUS	1 GAL. CONT.	36" O.C.	XXX

PLANTING MIX - A (MIXED PLANTING - TWO PLANTS)
PLANT THE FOLLOWING SHRUBS AND GROUNDCOVERS ON A 6" O.C. TRIANGULAR GRID:

ARMERIA MARITIMA	SEA THRIFT	1 GAL. CONT.	12" O.C.	XXX
SEDUM DIVERGENS	PACIFIC STONECROP	4" POTS	6" O.C.	XXX

PLANTING MIX - B (MIXED PLANTING - FOUR PLANTS)
PLANT THE FOLLOWING SHRUBS AND GROUNDCOVERS ON A 6" O.C. TRIANGULAR GRID:

1. POLYSTICHUM MUNITUM	WESTERN SWORD FERN	1 GAL. CONT.	36" O.C.	XXX
2. GALTHERIA SMALLON	SALAL	1 GAL. CONT.	24" O.C.	XXX
3. EUPHORBIA X MARTINI 'TINY TIM'	DWARF SPURGE	1 GAL. CONT.	18" O.C.	XXX
4. SEDUM OREGANUM	OREGON SEDUM	4" POTS	6" O.C.	XXX

MULCH

RIVER ROCK MULCH

PLANTING NOTES

- CONTRACTOR SHALL PROVIDE PLANTING SOIL, SOIL AMENDMENTS, AND MULCH TO THE COMPOSITION AND DEPTHS IN ACCORDANCE WITH THE DETAILS AND SPECIFICATIONS OF THE CONTRACT DOCUMENTS.
- ALL PLANTS SHALL BE INSTALLED IN ACCORDANCE WITH THE DETAILS AND THE SPECIFICATIONS PROVIDED AS PART OF THE CONTRACT DOCUMENTS.
- QUANTITIES ARE LISTED FOR THE CONTRACTORS CONVENIENCE ONLY. ALL COUNTS MUST BE VERIFIED BY THE CONTRACTOR. IN THE CASE OF A DISCREPANCY BETWEEN THE LEGEND AND THE PLAN, PLANTS INDICATED ON THE PLAN SHALL SUPERCEDE QUANTITIES LISTED IN THE LEGEND.
- UTILITY LOCATIONS SHOWN ON PLANS MAY DIFFER FROM FIELD CONDITIONS. CONTRACTOR TO FIELD VERIFY ALL UTILITIES BEFORE INSTALLATION. CONFLICTS BETWEEN ANY EXISTING AND PROPOSED UTILITIES ARE TO BE BROUGHT TO THE ATTENTION OF THE LANDSCAPE ARCHITECT IMMEDIATELY.

KEYNOTES

- SHRUBS AND GROUNDCOVERS TO BE SPACED 6" + THEIR SPECIFIED ON-CENTER SPACING (O.C.) WHEN ADJACENT TO PAVED AREAS.
- PROVIDE A 6" DIAMETER BARK MULCH RING (2" DEPTH) FOR NEW TREES.



Project: Coos Bay Gateway Improvements
City of Coos Bay
500 Vermont Avenue
Salem, OR 97302
Contact: tony.davis@coosbay.org

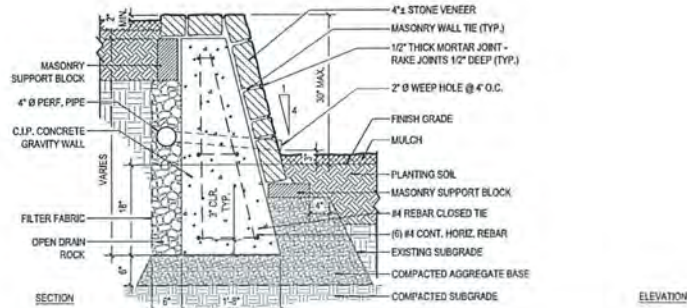
Submit: 90% CDs
Sheet Title: Planting Plan South Gateway

© 2017 GreenWorks
This drawing is the property of GreenWorks, P.C. and shall not be reproduced or transmitted in any form or by any means, electronic, mechanical, photocopying, recording, or by any information storage and retrieval system, without the prior written permission of GreenWorks, P.C.

Date: 03/22/2017
Revisions:

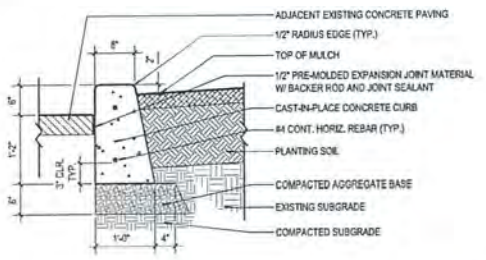
Drawn By:	777
Checked By:	777
Job No.:	118056.1
Approved:	777

L5.01
Sheet No. X of N

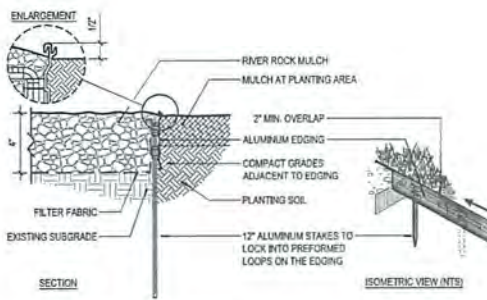


1 SILT FENCING (DETAIL IN PROGRESS) SECTION NOT TO SCALE

2 STONE VENEER WALL SECTION SCALE: 1" = 1'-0" 0' 2' 4' 8' 12'



3 PLANTER CURB SECTION SCALE: 1" = 1'-0" 0' 2' 4' 8' 12'



4 METAL EDGER & RIVER ROCK MULCH SECTION ISOMETRIC SCALE: 2" = 1'-0" 0' 1' 2' 4'

5 ODOT STANDARD CURB (DETAIL IN PROGRESS) SECTION NOT TO SCALE

6 COOS BAY RAILING (DETAIL IN PROGRESS) SECTION NOT TO SCALE



Project: Coos Bay Gateway Improvements
 City of Coos Bay
 2000 1st Street, Suite 100
 Coos Bay, OR 97331
 Contact: Nancy Clavin, nclavin@gatewayimprovements.com

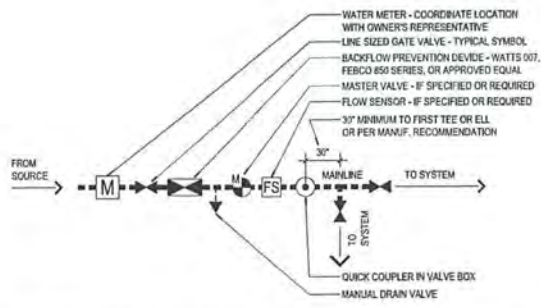
Submitted: 90% CDs
 Sheet Title: Site Details

© 2017 Greenworks, Inc.
 All rights reserved. No part of this publication may be reproduced, stored in a retrieval system, or transmitted, in any form or by any means, electronic, mechanical, photocopying, recording, or by any information storage and retrieval system, without the prior written permission of Greenworks, Inc.

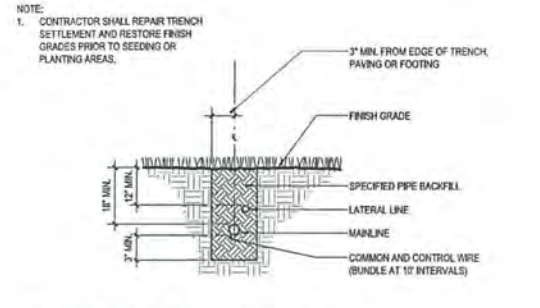
Date: 03/22/2017
 Revisions:

Drawn By: 777
 Checked By: 777
 Job No.: 156056.1
 Approval: 777

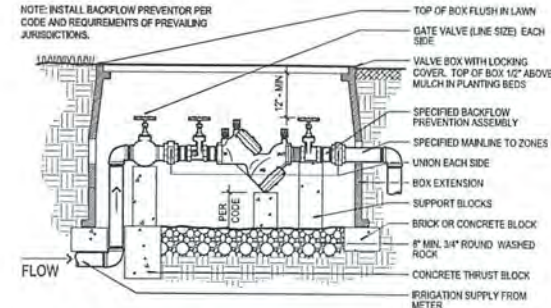
L6.00
 Sheet No. 12 of 14



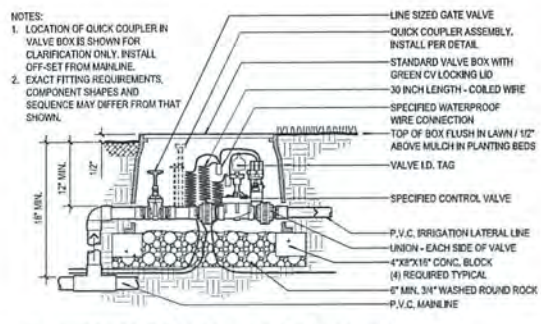
1 POINT OF CONNECTION DIAGRAM
 PLAN NOT TO SCALE



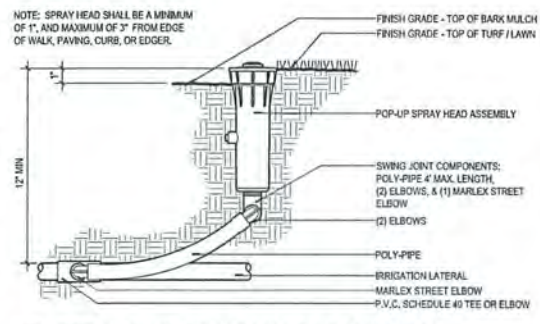
2 TRENCHING IN PLANTING AREA
 SECTION NOT TO SCALE



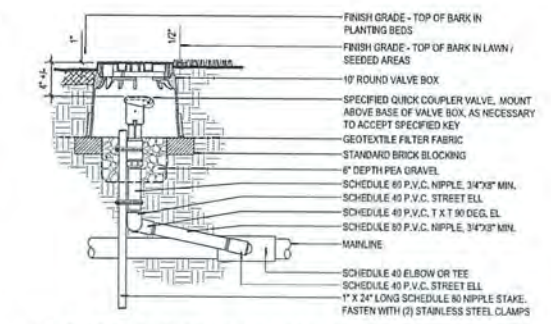
3 BACKFLOW PREVENTION ASSEMBLY
 SECTION NOT TO SCALE



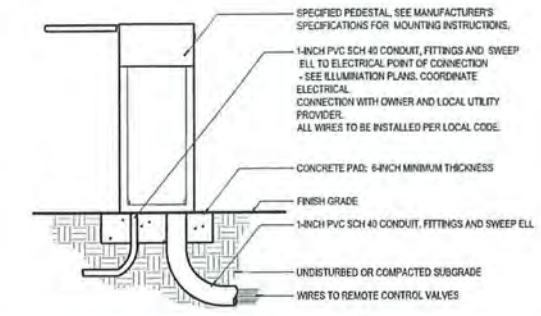
4 AUTOMATIC CONTROL VALVE ASSEMBLY
 SECTION NOT TO SCALE



5 SPRAY HEAD - POLY SWING PIPE ASSEMBLY
 SECTION NOT TO SCALE



6 QUICK COUPLER VALVE ASSEMBLY
 SECTION NOT TO SCALE



7 PEDESTAL MOUNT AUTOMATIC CONTROLLER
 SECTION NOT TO SCALE

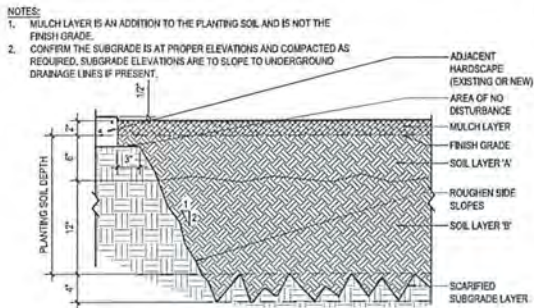


Project: Coos Bay Gateway Improvements
 City of Coos Bay
 500 Lewis Street
 Coos Bay, OR 97423
 Contact: Barry Olson, olson@coosbay.org

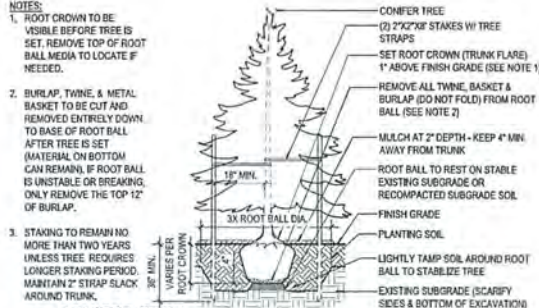
Submitted: 50% CDs
 Sheet Title: Irrigation Details

Date: 03/22/2017
 Revisions:
 Drawn By: 777
 Checked By: 777
 Job No.: 116055.1
 Approved: 777

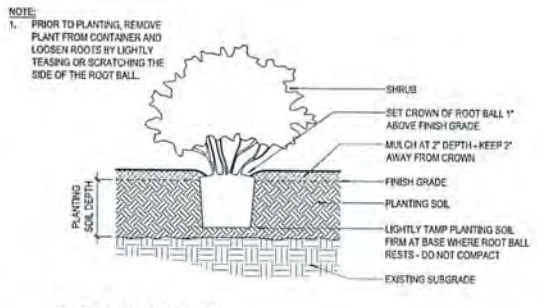
L6.01
 Sheet No. 13 of 14



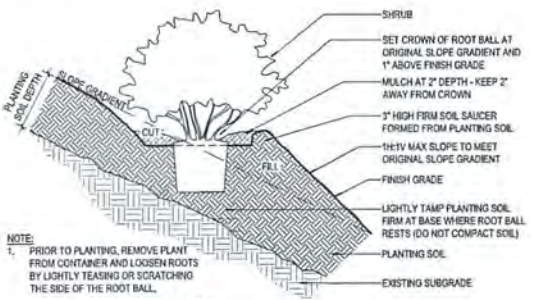
1 PLANTING SOIL PROFILE
SECTION NOT TO SCALE



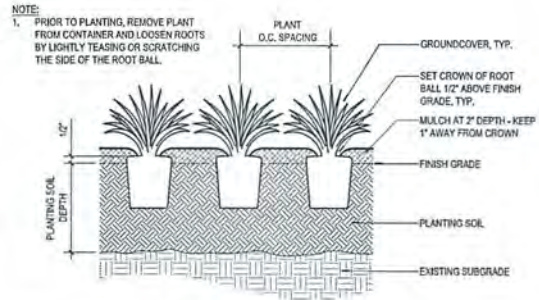
2 CONIFER TREE PLANTING (B&B) WITH PLANTING SOIL
SECTION NOT TO SCALE



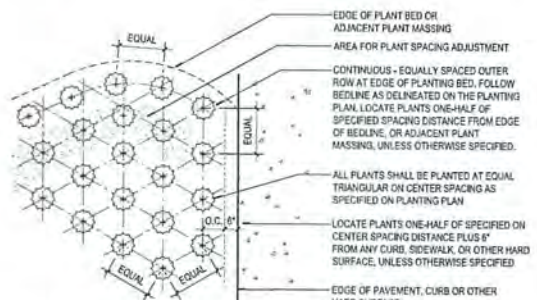
3 SHRUB CONTAINER PLANTING WITH PLANTING SOIL
SECTION NOT TO SCALE



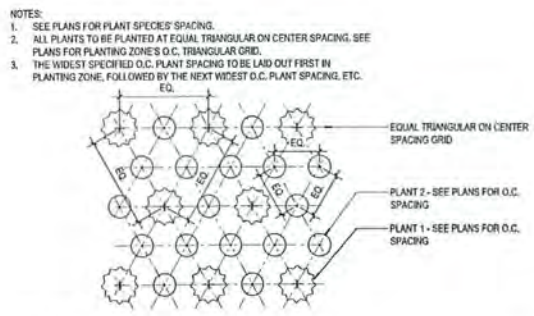
4 SHRUB CONTAINER PLANTING ON SLOPE WITH PLANTING SOIL
SECTION NOT TO SCALE



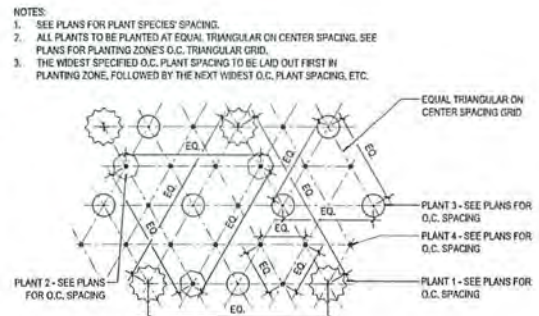
5 GROUNDCOVER PLANTING WITH PLANTING SOIL
SECTION NOT TO SCALE



6 PLANT SPACING DIAGRAM
PLAN NOT TO SCALE



7 MIXED PLANTING - TWO PLANTS
PLAN NOT TO SCALE



8 MIXED PLANTING - 4 PLANTS
PLAN NOT TO SCALE



Project: Coos Bay Gateway Improvements
City of Coos Bay
300 Linn Avenue
Coos Bay, OR 97331
Contact: Nancy Dixon, ndixon@greenworks.com

Submitted: 8/15/2018
Sheet Title: Planting Details
Date: 03/27/2019
Revision:
Drawn By: 777
Checked By: 777
Job No: 116/56.1
Approved: 777

L6.02
Sheet No. 14 of 14