

CITY OF COOS BAY CITY COUNCIL
Agenda Staff Report

MEETING DATE June 21, 2016	AGENDA ITEM NUMBER
--------------------------------------	---------------------------

TO: Mayor Shoji and City Councilors

FROM: Jennifer Wirsing, Wastewater Project Engineer

THROUGH: Jim Hossley, Public Works Director
Rodger Craddock, City Manager *RC*

ISSUE: Consider Award of Contract for Engineering Services and Construction of the Blossom Gulch & S 10th Street Sanitary Sewer Improvement project

BACKGROUND:

In May 2014 the City's sewer collections crew performed a video investigation for the portion of sanitary sewer along S. 10th Street, south of Curtis Avenue, and determined that 500 feet of pipe had significant deficiencies and assigned this as an emergency project. Because the 500 feet of pipe could not be replaced along the current alignment due to utility conflicts, it was determined that the City should contract with an engineer to prepare plans and specifications for this project. On February 17, 2015 Council approved the contract for Design Services for the S. 10th Street Sewer Line Replacement Project to HGE Inc. The Design for this project was completed in November 2015; however, bids for this project were not requested due to budgetary constraints in the wastewater emergency fund.

On September 1, 2015 Council approved the contract for HGE, Inc. for Design Services for Blossom Gulch Sewer Line Replacement Project. This project was identified in the City's Smoke Testing Report, prepared in 2009 and is located along S. 10th Street, north of Curtis Avenue. This project is one of the projects associated with the 20-year take down schedule for storm and sanitary sewer projects and is being funded by a loan and grant from Oregon Infrastructure Finance Authority (IFA).

Due to several of the projects coming in under budget on Loan 1, there are additional funds. As such, staff worked with the IFA project manager to combine the construction of these two projects (the IFA funded Blossom Gulch sewer replacement project with the emergency sewer replacement project on S 10th Street). Combining these two projects for construction allows the City to fix two deficient sanitary sewer lines while maximizing the benefits (the grant money) of Loan 1. On April 5, 2016 Council approved an addendum for HGE to move forward with combining the two projects.

The City Advertised bids on June 10, 2016. Bids are anticipated to be received on Thursday, June 23, 2016 at 2pm. Because this project is located adjacent to Blossom Gulch Elementary School it must be completed prior to September 6, 2016, which is the beginning of classes for the 2016-2017 school year. Due to the time constraints Staff is requesting approval for construction based on the Engineer's Estimate (prior to bids being received). If the results of the bids exceed the

engineer's construction estimate Staff will present those costs to the Council prior to award.

ADVANTAGES:

HGE, Inc. is a local engineering firm that has finalized design of both of these projects. They are well versed with the scope and specifications of the project and are the most appropriate firm to perform construction management. A portion of this project is one of the projects associated with the loan and grant obtained from IFA. Combining these projects and funding the emergency work through IFA, as opposed to the emergency account in the Wastewater Improvement Fund 29, allows for additional emergency projects to be completed.

If Council approves the award of this contract, the City can complete the project and repair a badly damaged sewer line thus preventing any further damage to the street, right of way, private lines and existing utilities. The repair of this line will minimize I/I from entering the system. Additionally, by performing this project during summer it will minimize the impacts that this could have on the school, buses and associated traffic.

DISADVANTAGES:

Staff sees no disadvantages.

BUDGET IMPLICATIONS:

The source of funds for this contract are from the Oregon Infrastructure Finance Authority Loan #1 (29-810-530-3015). HGE's Construction Management contract is for an amount of \$30,285, the engineers estimate for construction is \$373,095 for a total of \$403,380. Staff has recommended a 15% contingency of \$60,507 increasing the total amount to \$463,887.

ACTION REQUESTED:

If it pleases the City Council, approve the award for Engineering Services and Construction for Blossom Gulch & S 10th Street Sanitary Sewer Improvements for an amount not to exceed \$463,887.



City of Coos Bay

Coos County, Oregon

Contract Documents *For the Construction of*

Blossom Gulch & S. 10th Street
Sanitary Sewer Improvements

This Project is Being Fully Funded by Lottery funds through Water Wastewater Financing Program administered by Oregon Business Development Department – Infrastructure Finance Authority

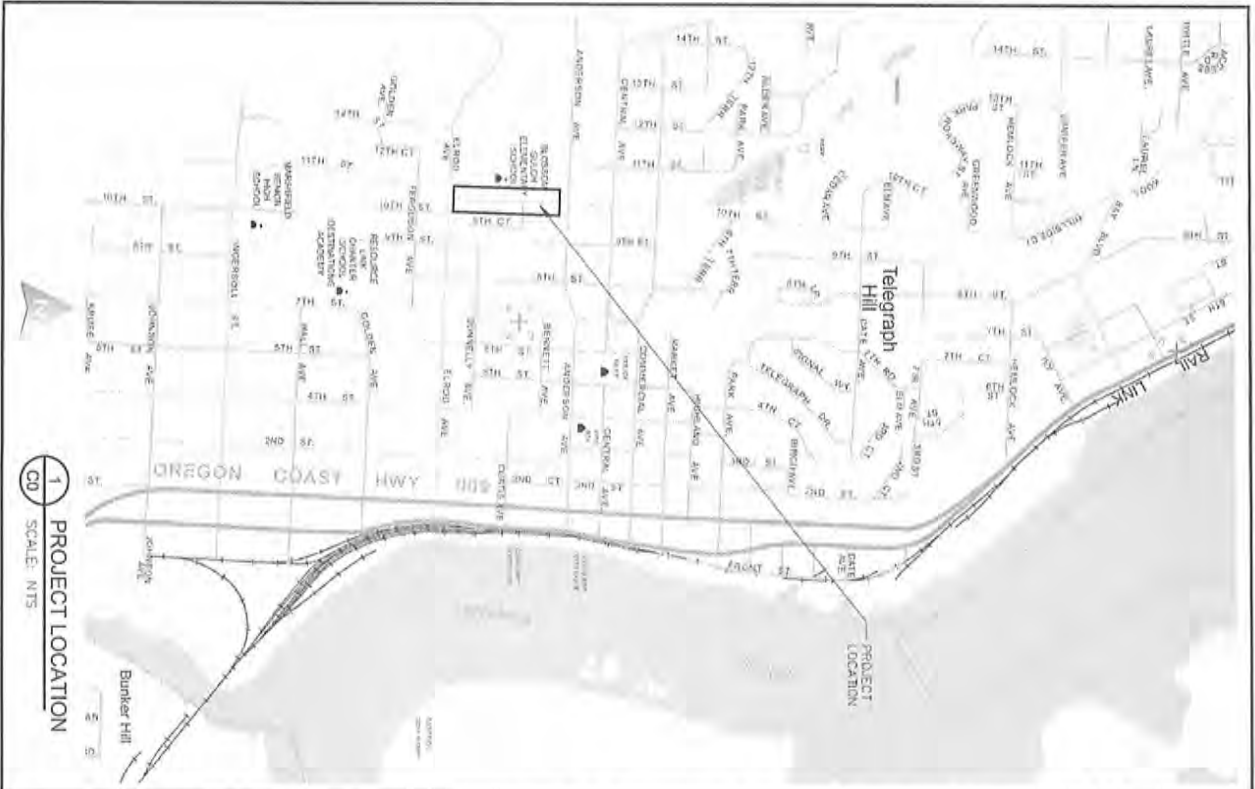
Volume 3 – Project Drawings

June 2016

City Project # 160031
HGE Project # 15.55



HGE, Inc. • 375 Park Ave • Coos Bay, Oregon 97420 • www.hge1.com



CITY OF COOS BAY

Blossom Gulch & S. 10th Street

I&I Project - Sanitary Sewer Improvements

City Project No. 160031
HGE Project No. 15.55

This Project is Being Fully Funded by Lottery funds through Water Wastewater Financing Program administered by Oregon Business Development Department - Infrastructure Finance Authority

SHEET INDEX

- C0 - COVER
- C1 - SANITARY SEWER PLAN AND PROFILE, S. 10TH ST., STA. 0+00 TO 2+00/EXIST COND.
- C2 - EXISTING CONDITIONS / SITE MAP (CURTIS AVE. SOUTH)
- C3 - SANITARY SEWER PLAN AND PROFILE, S. 10TH ST., STA. 0+00 TO 2+50S
- C4 - SANITARY SEWER PLAN AND PROFILE, S. 10TH ST., STA. 2+50 TO 5+00S
- C5 - SANITARY SEWER PLAN AND PROFILE, S. 10TH ST., STA. 2+50 TO 5+43S
- D1 - STANDARD DETAILS
- D2 - STANDARD DETAILS
- D3 - STANDARD DETAILS
- D4 - STANDARD DETAILS

ONE-CALL REQUIRED:
CONTRACTOR SHALL CONTACT "ONE-CALL" AT 1-800-332-2344 FOR UTILITY LOCATES AT LEAST 24 HRS BEFORE ANY EXCAVATION BEGINS TO CONSTRUCTION. THE CONTRACTOR SHALL VERIFY PERMITS, LOCATIONS AND ELEVATIONS ESPECIALLY AT CONNECTIONS AND CROSSINGS. CONTRACTOR SHALL OBTAIN ALL NECESSARY PERMITS FROM THE CITY OF COOS BAY AND THE STATE OF OREGON. CONTRACTOR SHALL OBTAIN ALL NECESSARY PERMITS FROM THE STATE OF OREGON AND THE CITY OF COOS BAY. CONTRACTOR SHALL OBTAIN ALL NECESSARY PERMITS FROM THE STATE OF OREGON AND THE CITY OF COOS BAY. CONTRACTOR SHALL OBTAIN ALL NECESSARY PERMITS FROM THE STATE OF OREGON AND THE CITY OF COOS BAY.

TRAFFIC CONTROL: AT UNLAWFUL MUST BE MAINTAINED TO ALLOW ACCESS TO BUSINESS, PROVIDE FLAGGING CONES, WARNING SIGNS, AND TEMP FENCING AS REQUIRED AND DIRECTED. FOLLOW ODOT MANUAL FOR TRAFFIC CONTROL. PRIOR NOTIFICATION AND COORDINATION WITH PROPERTY OWNERS SHALL BE CONTRACTOR'S RESPONSIBILITY AND IS REQUIRED BEFORE DISRUPTION AND ACCESS. SUBMIT TRAFFIC CONTROL PLAN FOR APPROVAL PRIOR TO THE COMMENCEMENT OF WORK. SEE SPECIFICATIONS.

STANDARDS: CONTRACTOR SHALL STAKE WORK AND MATERIALS TO UNLAWFUL DISRUPTION TO BUSINESS, TRAFFIC AND PEDESTRIANS. SUBMIT STAKE PLAN FOR APPROVAL PRIOR TO THE COMMENCEMENT OF WORK. ONLY APPROVED AREAS WILL BE ALLOWED FOR STAKING. NO STORAGE OF MATERIALS ON PAVEMENT. SEE SPECIFICATIONS.

EROSION CONTROL: CONTRACTOR SHALL PROVIDE PROPER EROSION CONTROL AND RUNOFF PROTECTION. CATCH BASINS SHALL BE SURROUNDED BY CURBS AND FENCED TO PREVENT PUBLIC ACCESS. THE STREET SHALL BE PROTECTED FROM DAMAGE BY CONSTRUCTION EQUIPMENT AND AS CLEAN AS PRACTICAL DURING CONSTRUCTION. SEDIMENT LADEN RUNOFF SHALL BE PREVENTED FROM EXISTING CONSTRUCTION AREA OR ENTERING STORM SEWERS OR SANITARY SEWERS, DITCHES, AND CATCH BASINS. ADDITIONAL AGRICULTURE CLOSURES SHALL BE PLACED ALONG GUTTERS AND SEDIMENT CONTROL. SUBMIT PLANNED EROSION CONTROL PROCEDURES FOR APPROVAL. CONTRACTOR IS RESPONSIBLE TO PROPERLY PROTECT SITE AND ADJACENT SITES FROM EROSION AND RUNOFF AND TO COMPLY WITH ALL APPLICABLE RULES AND REGULATIONS.



HGE INC ARCHITECTS ENGINEERS & PLANNERS
175 PARK AVE. COOS BAY, OR 97423
541.269.1166 www.hget.com

REPRODUCTION OF THESE DRAWINGS EITHER IN WHOLE OR IN PART, FOR ANY REASON WITHOUT PRIOR WRITTEN PERMISSION, IS STRICTLY PROHIBITED.

REV.	DATE	DESCRIPTION	BY

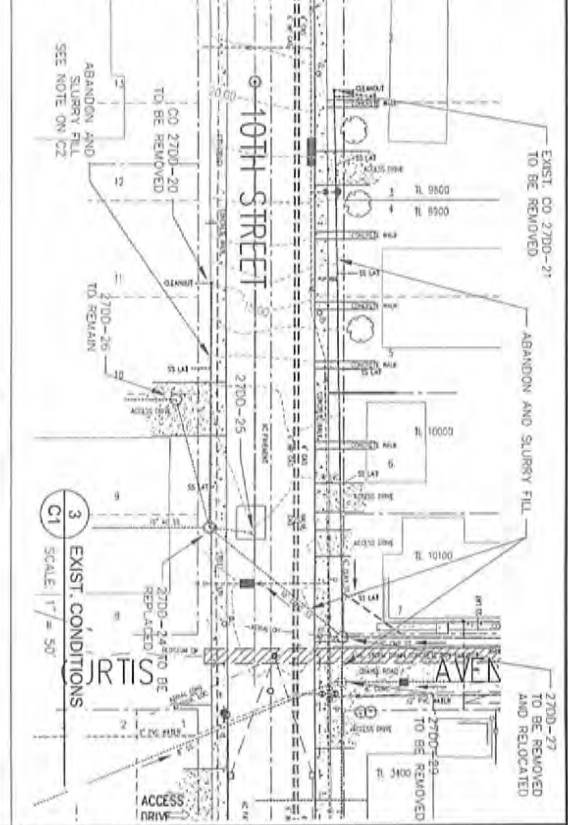
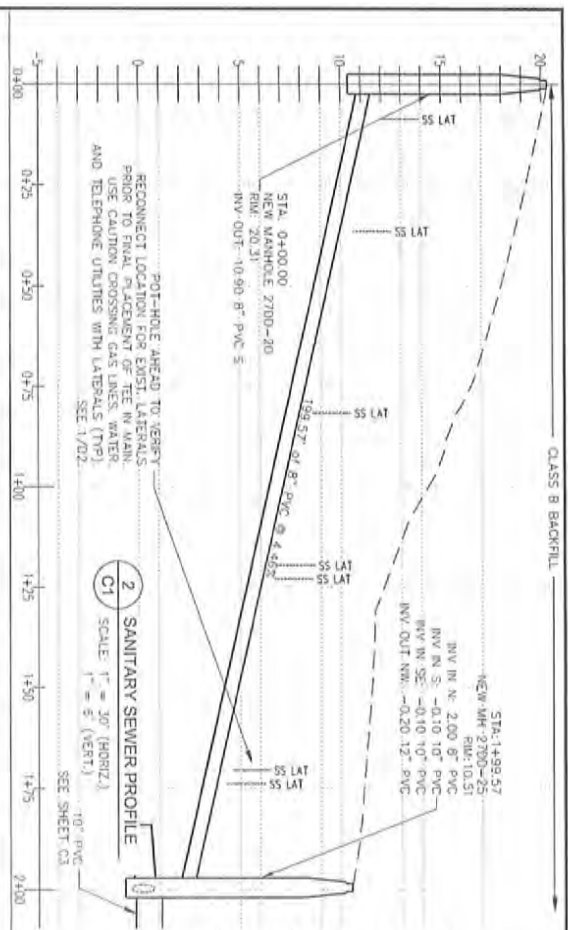
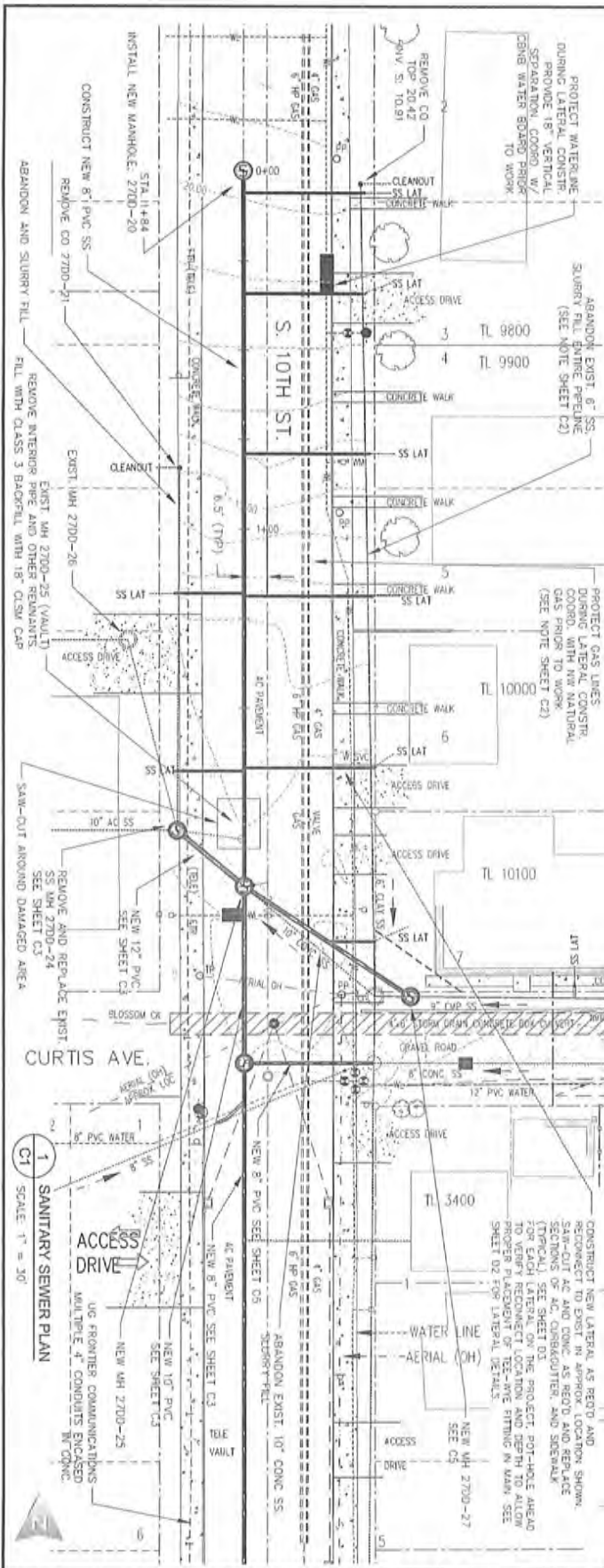
Checked By: REB Drawn By: REB Cleared By: BRC
High Scale: 1/8"=1'

CITY OF COOS BAY
COOS COUNTY, OREGON

Blossom Gulch and S. 10th Street
I/I Project - Sanitary Sewer Improvements

COVER SHEET
LOCATION MAP, SHEET INDEX, NOTES

06/09/2016



CITY OF COOS BAY
COOS COUNTY, OREGON

Blossom Gulch and S. 10th Street
I/I Project - Sanitary Sewer Improvements

SANITARY SEWER PLAN AND PROFILE
S. 10TH ST. - STA. 0+00 TO 2+00

DATE: 06/09/2016

REV.	DATE	DESCRIPTION	BY

Drawn By: HEB
Checked By: HEB
Project No: 18.06

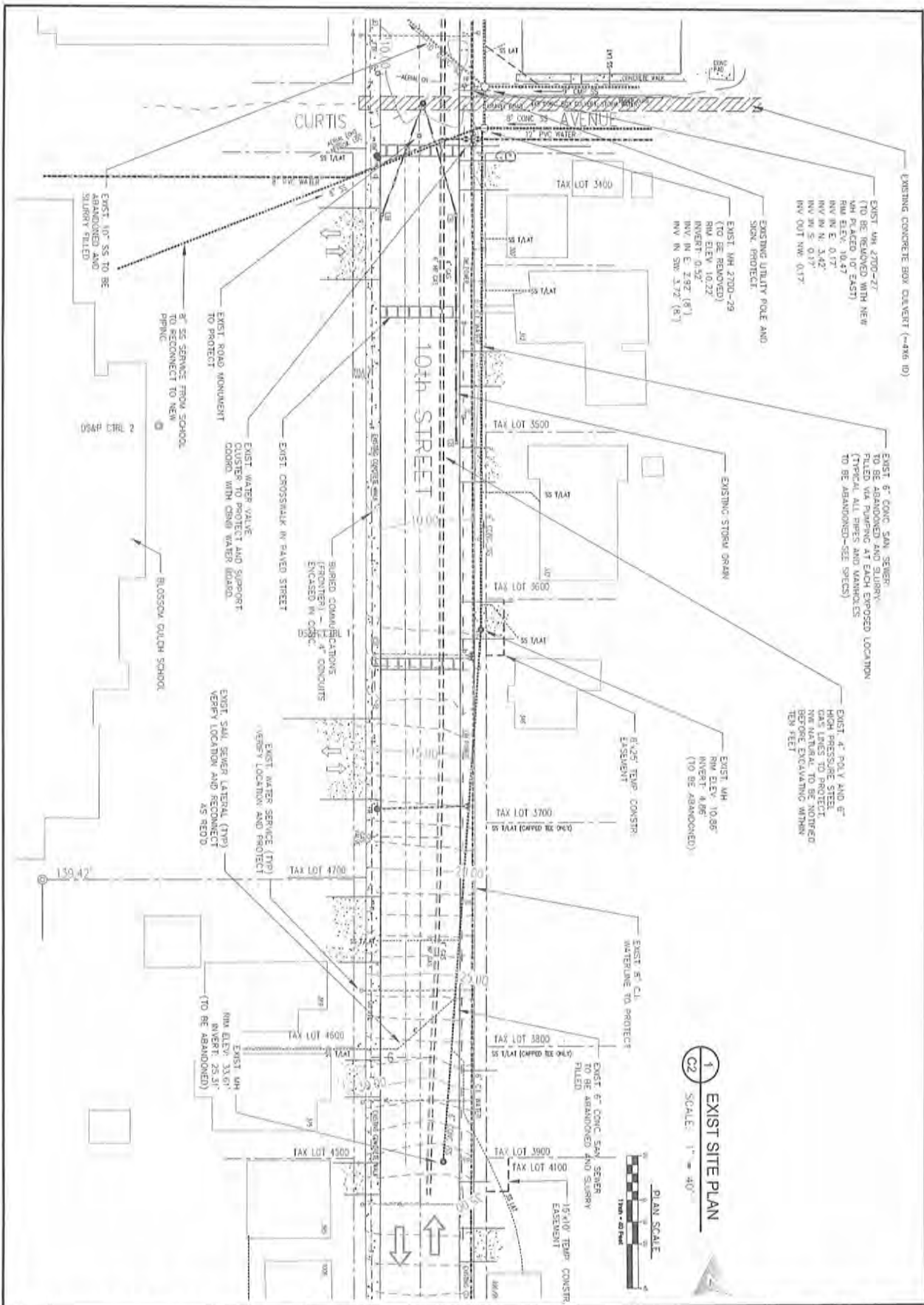
HGE INC

ARCHITECTS ENGINEERS & PLANNERS
375 PARK AVE., COOS BAY, OR 97420
541.269.1166 www.hge1.com

REPRODUCTION OF THESE DRAWINGS EITHER IN WHOLE OR IN PART, FOR ANY REASON WITHOUT PRIOR WRITTEN PERMISSION, IS STRICTLY PROHIBITED.

REGISTERED PROFESSIONAL ENGINEER
ROBERT E. HARRIS
No. 12345
OREGON
APR 25, 2011

REVISIONS: 02/01/17



EXIST SITE PLAN
SCALE: 1" = 40'



CITY OF COOS BAY
COOS COUNTY, OREGON

Blossom Gulch and S. 10th Street
I/I Project - Sanitary Sewer Improvements

SITE MAP
EXISTING CONDITIONS

REV.	DATE	DESCRIPTION	BY

Designed By: RES Drawn By: RES Checked By: SRC
 Project No: 14.00

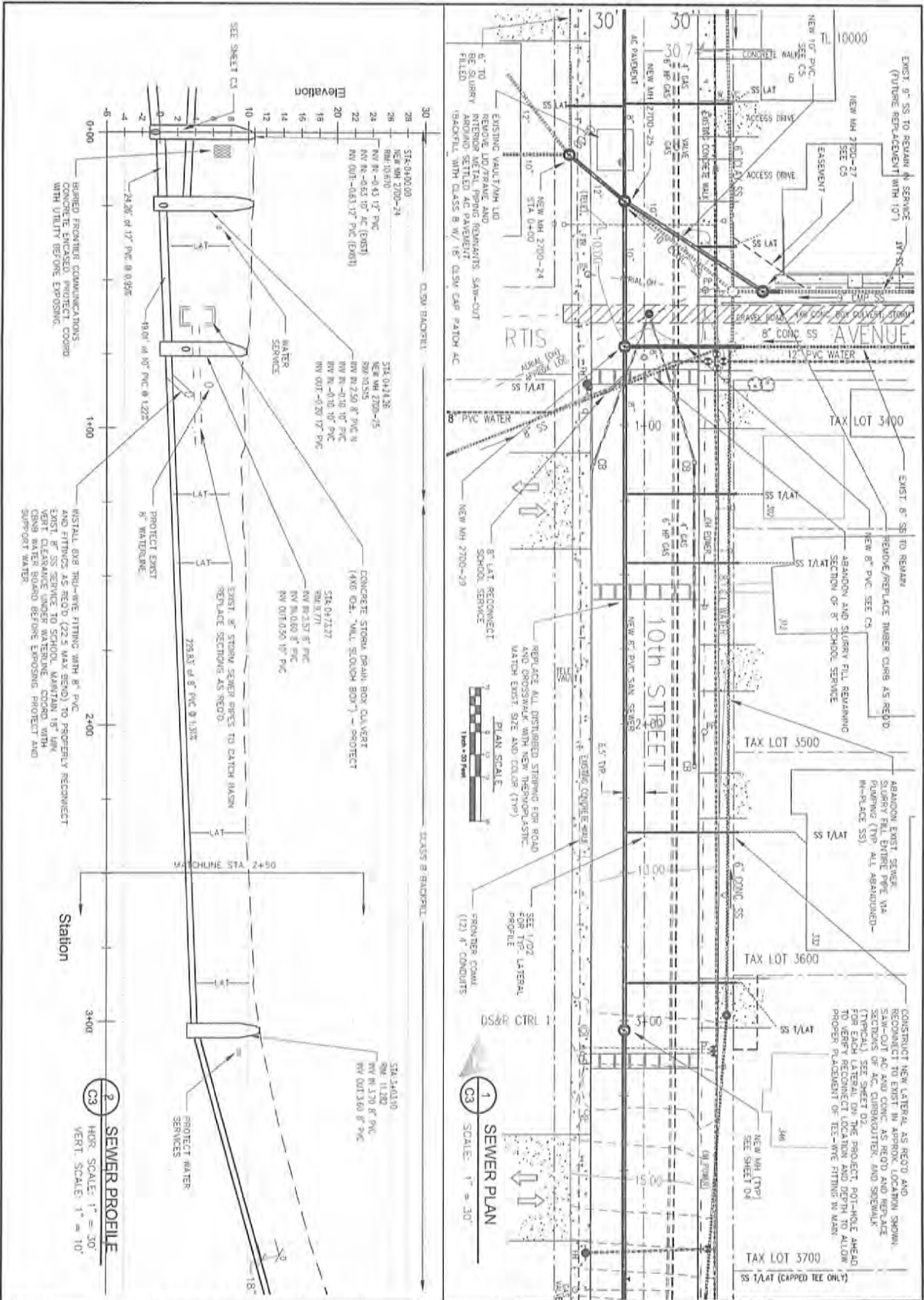
HGE INC ARCHITECTS ENGINEERS & PLANNERS
 375 PARK AVE. COOS BAY, OR 97420
 541.299.1166 www.hgei.com

REPRODUCTION OF THESE DRAWINGS EITHER IN WHOLE OR IN PART, FOR ANY REASON WITHOUT WRITTEN PERMISSION, IS STRICTLY PROHIBITED.

REGISTERED PROFESSIONAL ENGINEER
 OREGON
 NOV 25, 2009
ROBERT E. BYNUM

REVISIONS: 04/2017

06/09/2016
C2



CITY OF COOS BAY
COOS COUNTY, OREGON

Blossom Gulch and S. 10th Street
I/I Project - Sanitary Sewer Improvements

SANITARY SEWER PLAN AND PROFILE
S. 10TH ST. - STA. 0+00 TO 2+50

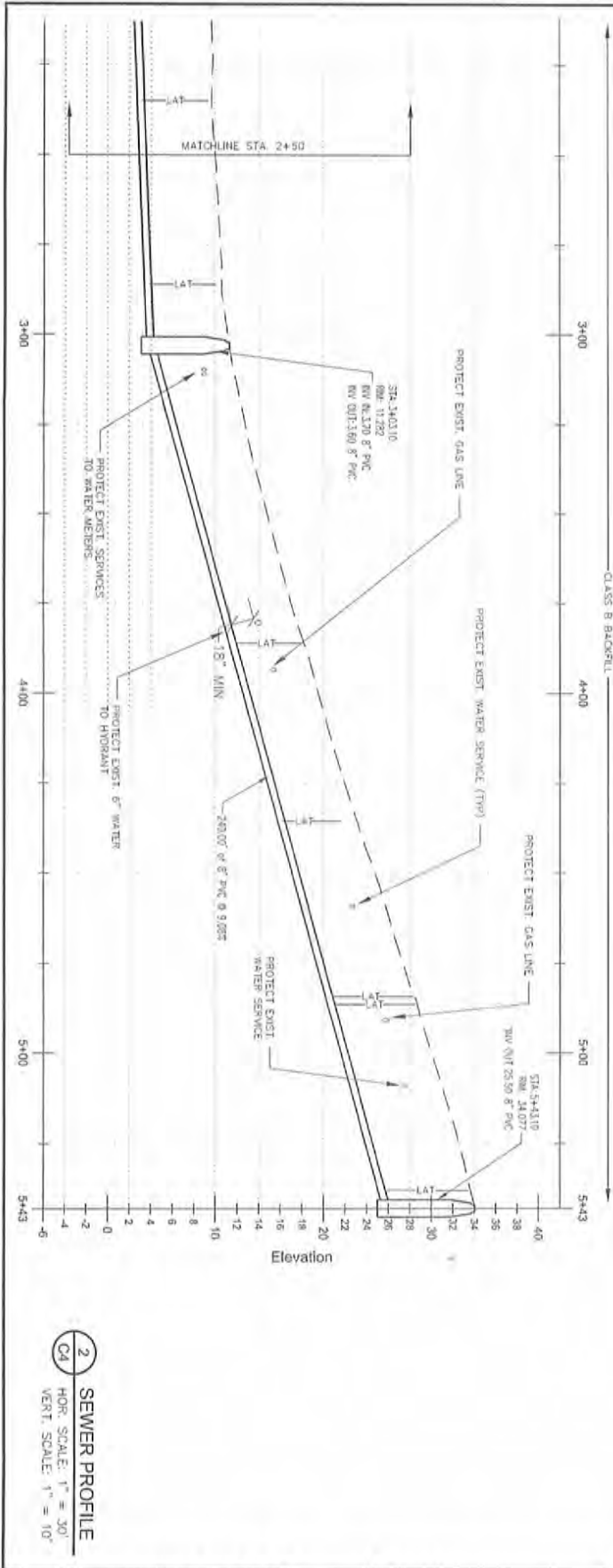
REV.	DATE	DESCRIPTION	BY

Drawn by: HEB, Elected By: HEB, Checked By: HEB, Date: 11.20

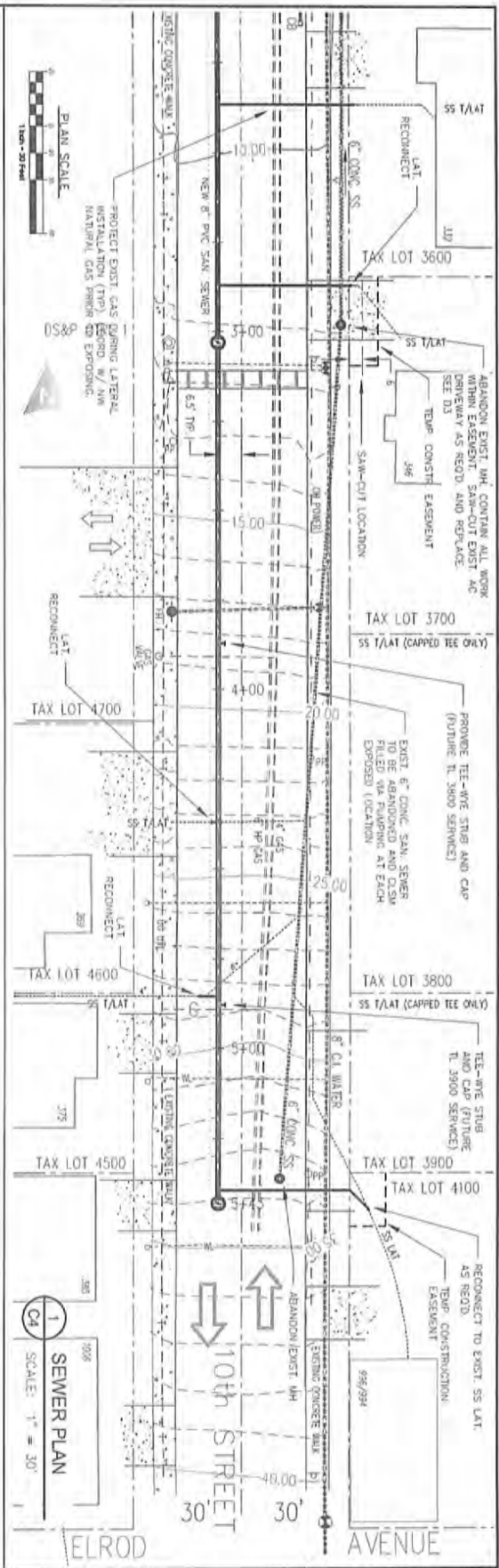
HGE INC ARCHITECTS ENGINEERS & PLANNERS
375 PARK AVE. COOS BAY, OR 97420
541.269.1166 www.hge1.com

REPRODUCTION OF THESE DRAWINGS EITHER IN WHOLE OR IN PART, FOR ANY PURPOSE WITHOUT PRIOR WRITTEN PERMISSION, IS STRICTLY PROHIBITED.

REGISTERED PROFESSIONAL ENGINEER
ROBERT E. HARRIS
NOV 25, 1988
OR 17706
EXPIRES 11/25/2015



2 SEWER PROFILE
 HOR. SCALE: 1" = 30'
 VERT. SCALE: 1" = 10'



1 SEWER PLAN
 SCALE: 1" = 30'

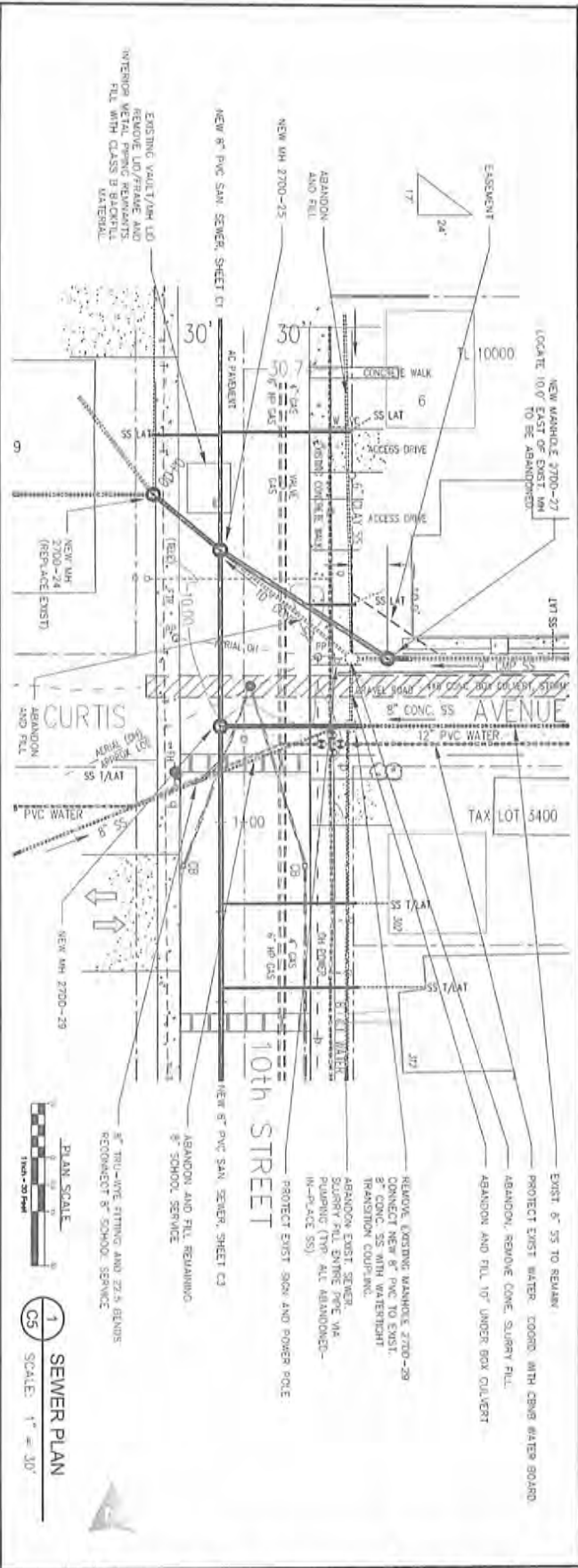
CITY OF COOS BAY COOS COUNTY, OREGON	
Blossom Gulch and S. 10th Street I/I Project - Sanitary Sewer Improvements	
SANITARY SEWER PLAN AND PROFILE S. 10TH ST. - STA. 2+50 TO 5+43	

REV.	DATE	DESCRIPTION	BY

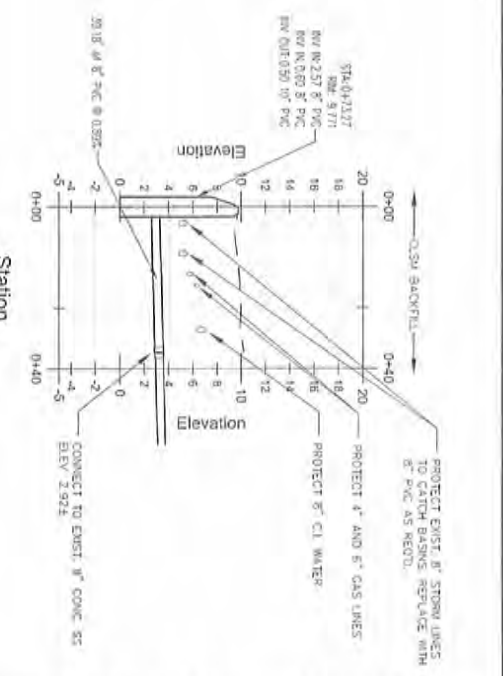
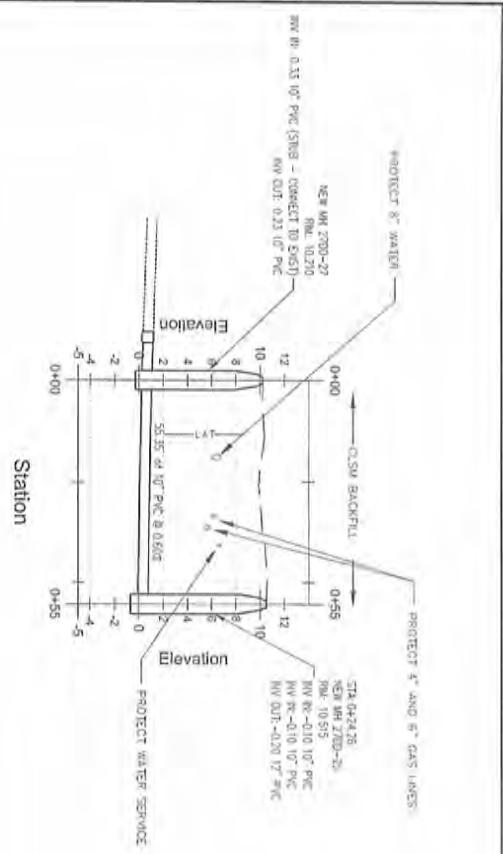
HGE INC ARCHITECTS ENGINEERS & PLANNERS
 175 PARK AVE COOS BAY, OR 97420
 541.269.1166 www.hge1.com

REPRODUCTION OF THESE DRAWINGS EITHER IN WHOLE OR IN PART, FOR ANY REASON WITHOUT PRIOR WRITTEN PERMISSION, IS STRICTLY PROHIBITED.

REGISTERED PROFESSIONAL ENGINEER
 OREGON
 ROBERT E. WILSON
 996/994



1 SEWER PLAN
SCALE: 1" = 30'



2 SEWER PROFILES
HOR. SCALE: 1" = 30'
VERT. SCALE: 1" = 10'

CITY OF COOS BAY
COOS COUNTY, OREGON

Blossom Gulch and S. 10th Street
1/1 Project - Sanitary Sewer Improvements

SANITARY SEWER PLAN AND PROFILE
S. 10TH ST. CROSSINGS

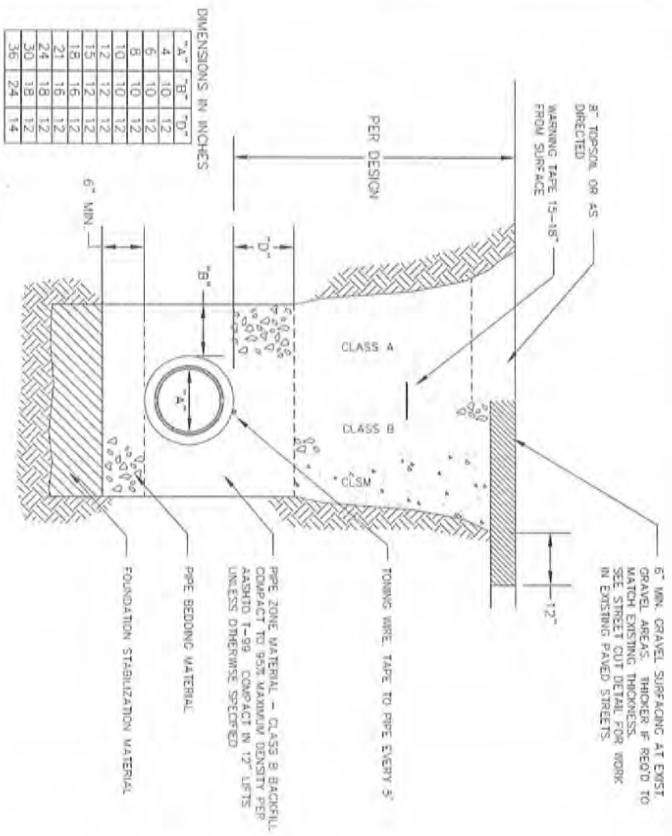
REV.	DATE	DESCRIPTION	BY

Drawn By: REB
Checked By: REB
Project No: 1884

HGE INC ARCHITECTS ENGINEERS & PLANNERS
375 PARK AVE. COOS BAY, OR 97420
541.269.1166 www.hgei.com

REPRODUCTION OF THESE DRAWINGS EITHER IN WHOLE OR IN PART, FOR ANY REASON WITHOUT WRITTEN PERMISSION, IS STRICTLY PROHIBITED.

REGISTERED PROFESSIONAL ENGINEER
ROBERT E. BERNHARDT
JULY 25, 1988
ORREG. NO. 1456
EXPIRES 12/31/2018

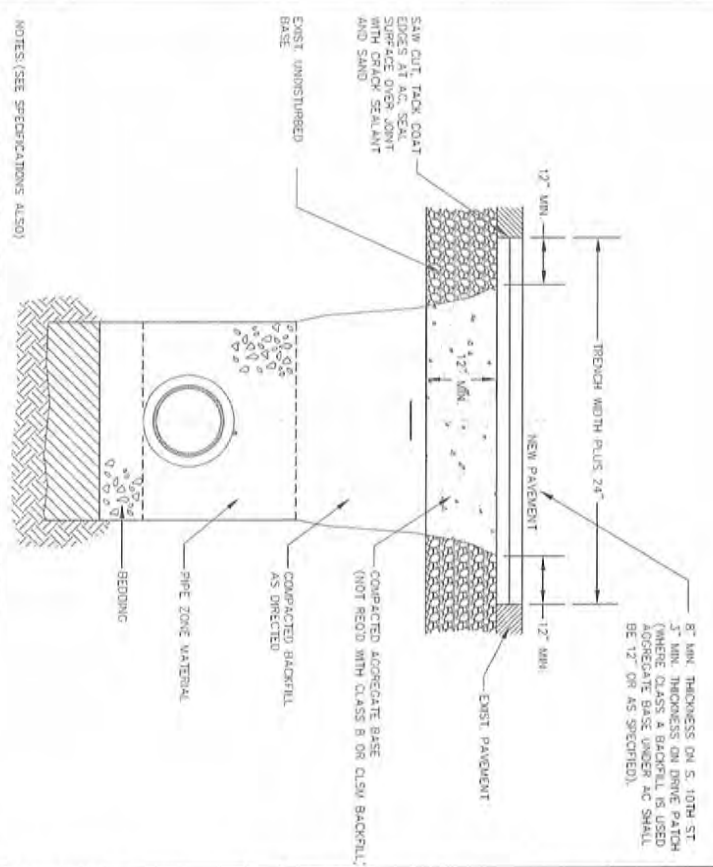


DIMENSIONS IN INCHES

A	B	T ₁	T ₂
4	10	12	
6	10	12	
8	10	12	
10	10	12	
12	10	12	
14	10	12	
16	10	12	
18	10	12	
20	10	12	
24	18	12	
30	18	12	
36	24	14	

- NOTES: (SEE SPECIFICATIONS ALSO)
1. TRENCH EXCAVATION SHALL BE CONDUCTED IN A SAFE MANNER WITH ALL NECESSARY BRACING AND SHORING PROVIDED FOR COMPLIANCE WITH OSHA.
 2. FOUNDATION STABILIZATION SHALL BE PROVIDED WHEN MATERIAL AT BOTTOM OF TRENCH IS UNSUITABLE IN THE OPINION OF THE CITY TO PROVIDE A STABLE TRENCH BASE. SEE SPECIFICATIONS.
 3. CLASS B BACKFILL REQUIRED UNLESS OTHERWISE SPECIFIED SEE SPECIFICATIONS AND PLAN/PROFILE DRAWINGS FOR BACKFILL LOCATIONS AND CLASSES.
 4. TONING WIRE REQUIRED AT ALL PVC PIPE. WIRE SHALL BE 10 GA. MINIMUM SOLID COPPER WIRE WITH GREEN 30 MIL THICK HDPE INSULATION RATED FOR DIRECT BURIAL. USE APPROVED WATERPROOF SPULGE AT ALL CONNECTIONS.
 5. WARNING TAPE SHALL BE 6" WIDE, 4 MIL THICK, YELLOW GREEN, READING "CAUTION SEWER LINE BURIED BELOW".
 6. MATERIALS SHALL BE IN ACCORDANCE WITH THE CITY OF COOS BAY STANDARDS AND THESE SPECIFICATIONS.
 7. COMPACT ALL FILL AS SPECIFIED.

1 STANDARD TRENCH DETAIL
D1 SCALE: NTS



- NOTES: (SEE SPECIFICATIONS ALSO)
1. ALL EXISTING AC OR PCC PAVEMENT SHALL BE SAWCUT IMMEDIATELY PRIOR TO REPAIRING.
 2. PLACE COMPACTED AGGREGATE BASE OR CLSM TO A MINIMUM THICKNESS OF 12 INCHES OR THE THICKNESS OF THE AOC BASE REMOVED, WHICHEVER IS GREATER. COMPACT AS DIRECTED.
 3. CONCRETE PAVEMENT SHALL BE REPLACED WITH CONCRETE TO A MINIMUM THICKNESS OF 6 INCHES OR TO THE THICKNESS OF REMOVED CONCRETE PAVEMENT, WHICHEVER IS GREATER. SMOOTH 1" DOWEL BARS SHALL BE INSTALLED AT 6 INCHES O.C. COMPACT AS DIRECTED. AC PAVEMENT SHALL BE PLACED IN AT LEAST TWO 2-INCH THICK LIFTS.
 4. PLACE AC MIN. TO A MINIMUM THICKNESS OF 4 INCHES OR THE THICKNESS OF REMOVED PAVEMENT, WHICHEVER IS GREATER. COMPACT AS DIRECTED.
 5. WHERE EXISTING PCC PAVEMENT IS OVERLAID WITH AC PAVEMENT, PLACE PCC PAVEMENT IN ACCORDANCE WITH NOTE 3 AND COVER WITH AC IN ACCORDANCE WITH NOTE 4.

2 STANDARD STREET CUT DETAIL
D1 SCALE: NTS

CITY OF COOS BAY
COOS COUNTY, OREGON

Blossom Gulch and S. 10th Street
I/I Project - Sanitary Sewer Improvements

STANDARD DETAILS
TRENCHING

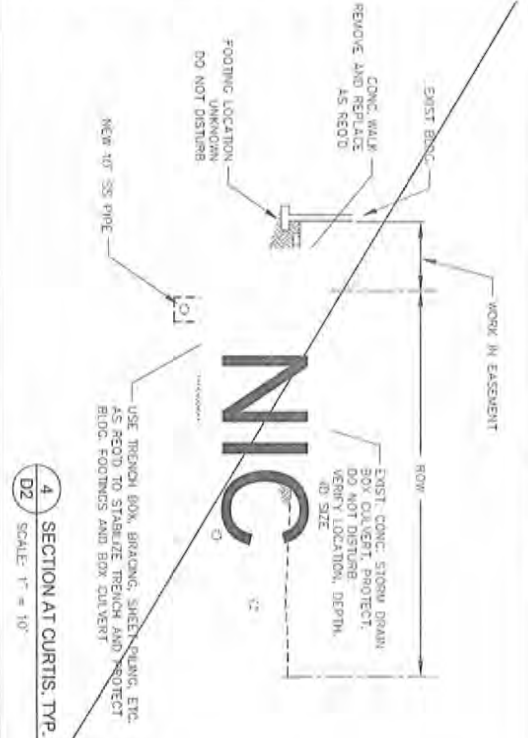
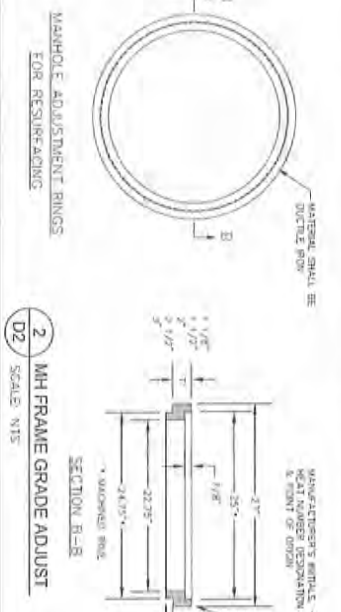
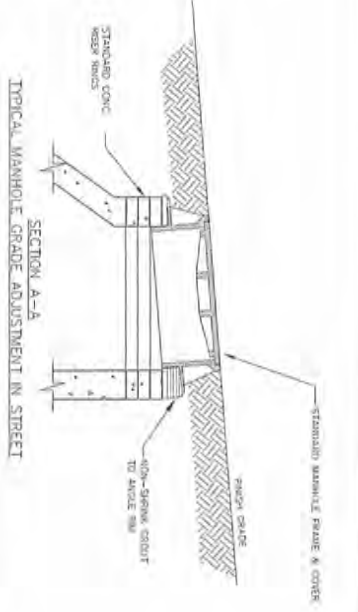
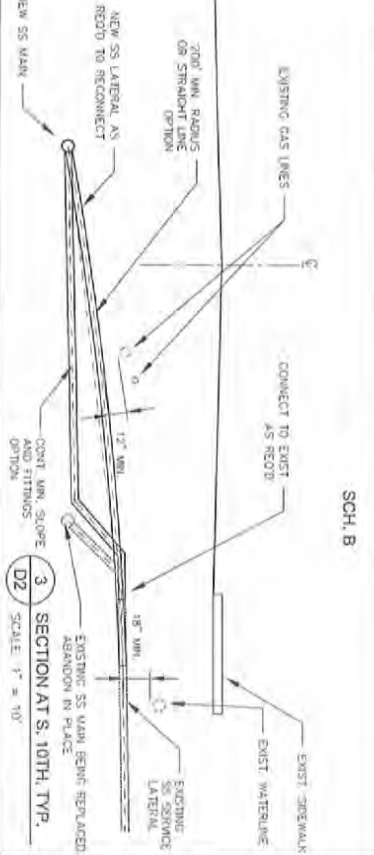
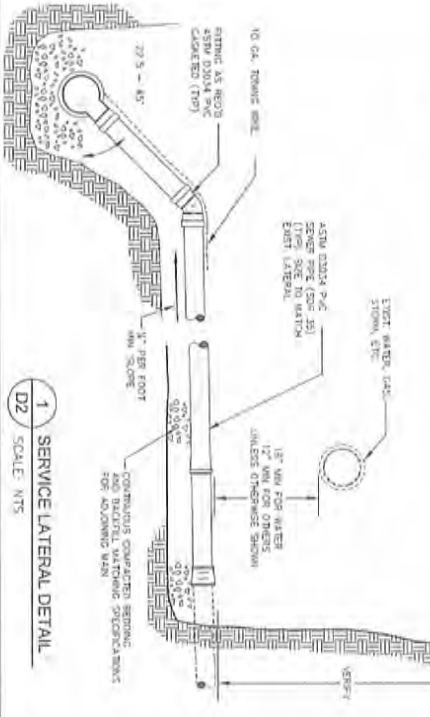
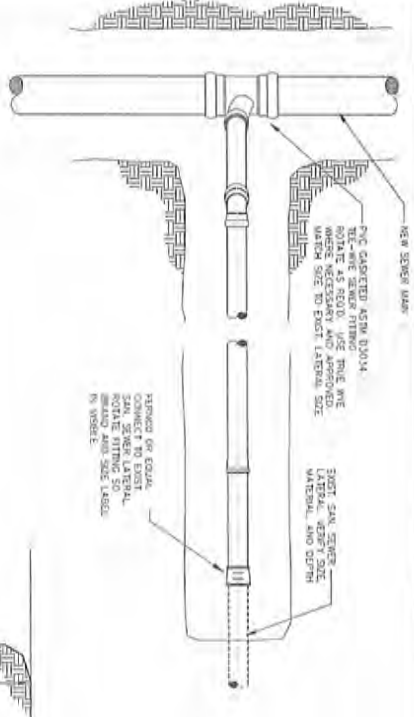
Rev.	Date	Description	By

Design By: REB Drawn By: REB Checked By: SHG
Project No: 15.65

HGE INC ARCHITECTS ENGINEERS & PLANNERS
375 PARK AVE. COOS BAY, OR 97420
541.269.3166 www.hge.com

REPRODUCTION OF THESE DRAWINGS EITHER IN WHOLE OR IN PART, FOR ANY REASON WITHOUT PRIOR WRITTEN PERMISSION, IS STRICTLY PROHIBITED.

REGISTERED PROFESSIONAL ENGINEER
ROBERT E. HENREWS, D1517
MAY 25, 2008
W.M. BAYNE



CITY OF COOS BAY
COOS COUNTY, OREGON

Blossom Gulch and S. 10th Street
1/1 Project - Sanitary Sewer Improvements

STANDARD DETAILS
SERVICE LATERALS, MH RIM ADJUST.

REV.	DATE	DESCRIPTION	BY

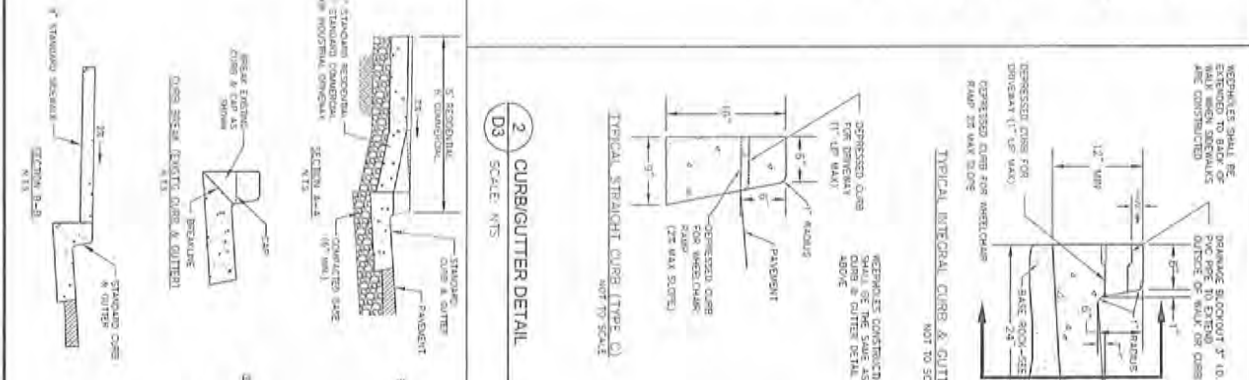
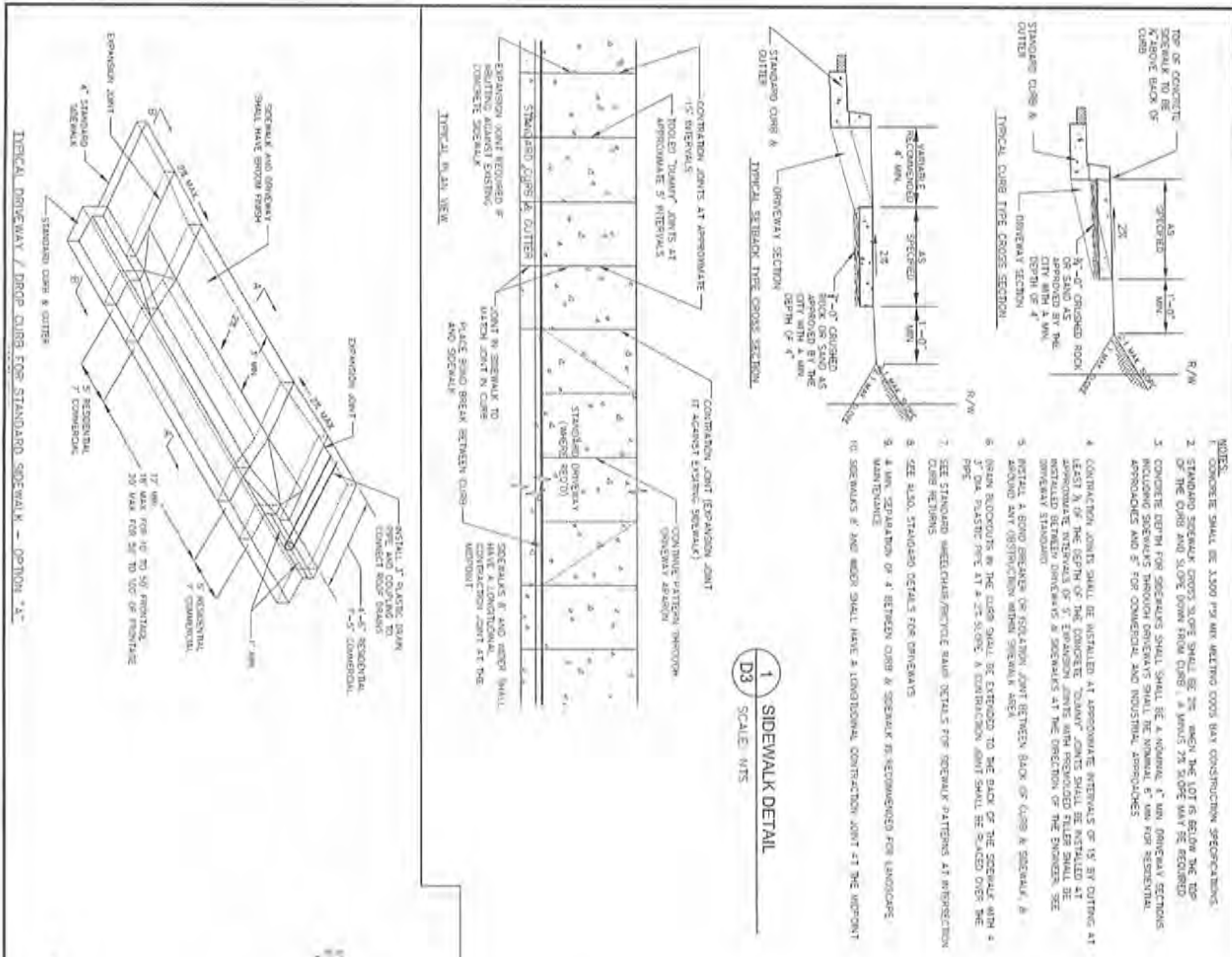
Drawn By: REB
Checked By: SRC
Phone No: 1555

HGE INC ARCHITECTS ENGINEERS & PLANNERS

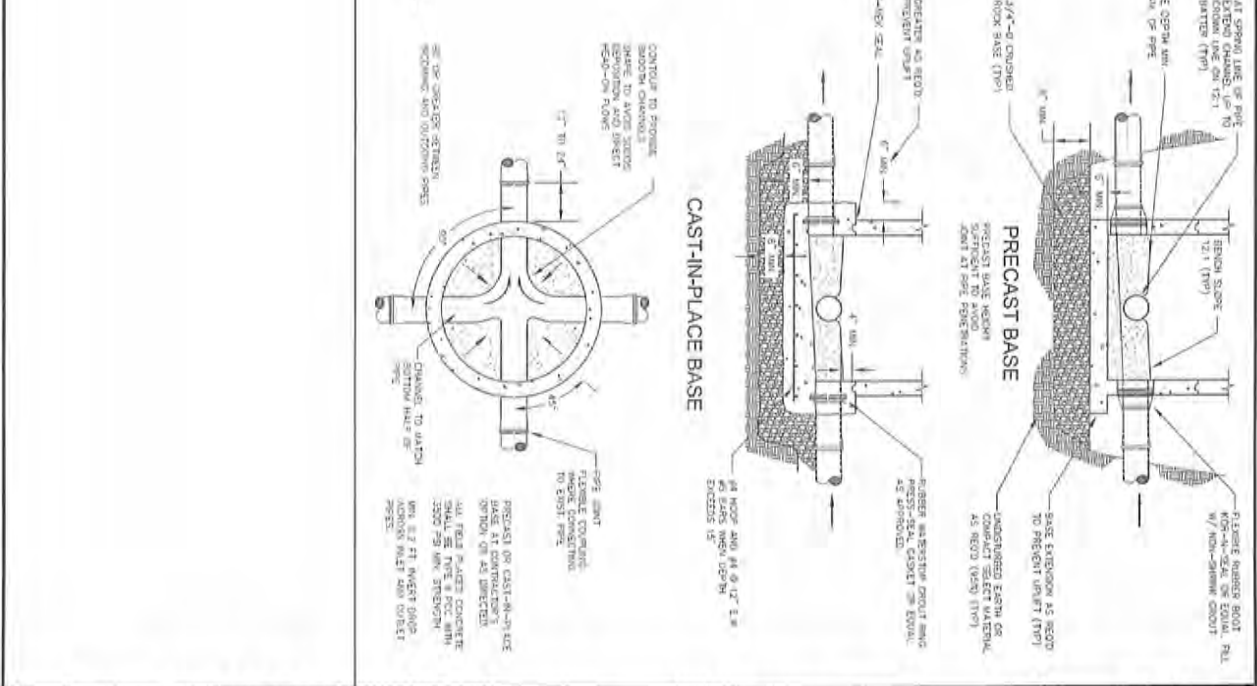
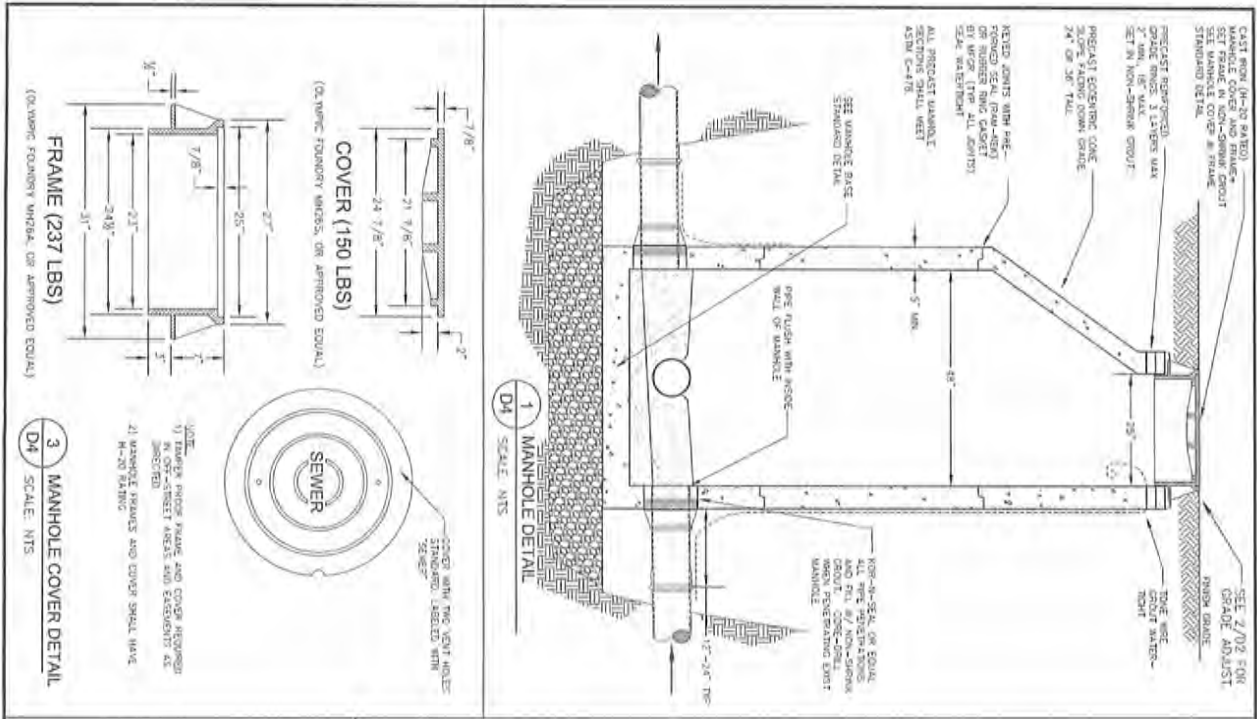
275 PARK AVE. COOS BAY, OR 97620
541.265.1166 www.hgei.com

REPRODUCTION OF THESE DRAWINGS EITHER IN WHOLE OR IN PART, FOR ANY REASON WITHOUT PRIOR WRITTEN PERMISSION, IS STRICTLY PROHIBITED.

REGISTERED PROFESSIONAL ENGINEER
ROBERT E. HARRIS
No. 25
COOS COUNTY, OREGON
17040E
RENEWAL DATE: 02/11/17



<p>CITY OF COOS BAY COOS COUNTY, OREGON</p> <p>Blossom Cutch and S. 10th Street I/I Project - Sanitary Sewer Improvements</p> <p>STANDARD DETAILS CONCRETE WORK</p>		<p>REV. DATE DESCRIPTION</p> <p>1 11/15/17</p>	<p>DESIGNED BY: HEB CHECKED BY: HEB DATE: 11/15/17</p>	<p>ARCHITECTS ENGINEERS & PLANNERS 124 PAINE AVE. COOS BAY, OR 97202 541.269.3166 www.hgeinc.com</p>	<p>REGISTERED PROFESSIONAL ENGINEER ROBERT E. HENRENS NO. 1000 EXPIRES MAY 31, 2017</p>
---	--	--	--	--	---



<p>CITY OF COOS BAY COOS COUNTY, OREGON</p> <p>Blossom Gulch and S. 10th Street //I Project - Sanitary Sewer Improvements</p> <p>STANDARD DETAILS MANHOLES</p>		<p>REV. DATE DESCRIPTION BY</p> <p>DESIGNED BY: REB DRAWN BY: REB CHECKED BY: BRG</p> <p>PROJECT NO: 15-05</p>	<p>HGE INC ARCHITECTS ENGINEERS & PLANNERS 375 PARK AVE. COOS BAY, OR 97420 541.369.1166 www.hge1.com</p> <p>REPRODUCTION OF THESE DRAWINGS EITHER IN WHOLE OR IN PART, FOR ANY REASON WITHOUT PRIOR WRITTEN PERMISSION, IS STRICTLY PROHIBITED.</p>	<p>REGISTERED PROFESSIONAL ENGINEER ROBERT E. SEMMEL MAY 25, 1988 RENEWED 2022/17</p>
--	--	--	---	---