

CITY OF COOS BAY CITY COUNCIL
Agenda Staff Report

MEETING DATE August 20, 2013	AGENDA ITEM NUMBER
--	---------------------------

TO: Mayor Shoji and City Council

FROM: Jim Hossley, Public Works Director

Through: Rodger Craddock, City Manager *RC*

ISSUE: Pre-Design Review of New Wastewater Treatment Plant #2

BACKGROUND:

The City contracted with the team of SHN and CH2M Hill to prepare the pre-design report and plans for the new Wastewater Treatment Plant #2 (WWTP2) project. The pre-design report and plan are 95% complete. The completed work will consist primarily of narrative materials related to technical design issues. The design plans will be at the 15% level.

At this point in the design phase, we have the proposed site layout, topographic elevations, and preliminary architectural/engineering elevations. Staff will provide a PowerPoint presentation with these details

ADVANTAGES:

The pre-design report & plans give the City Council, staff and our plant operators the opportunity to review and comment on the various design and layout aspects of the new WWTP2. In addition, the pre-design report and plans are reviewed by the Oregon Department of Environmental Quality (DEQ) which will ensure we are on the right track with their requirements.

DISADVANTAGES:

None

BUDGET:

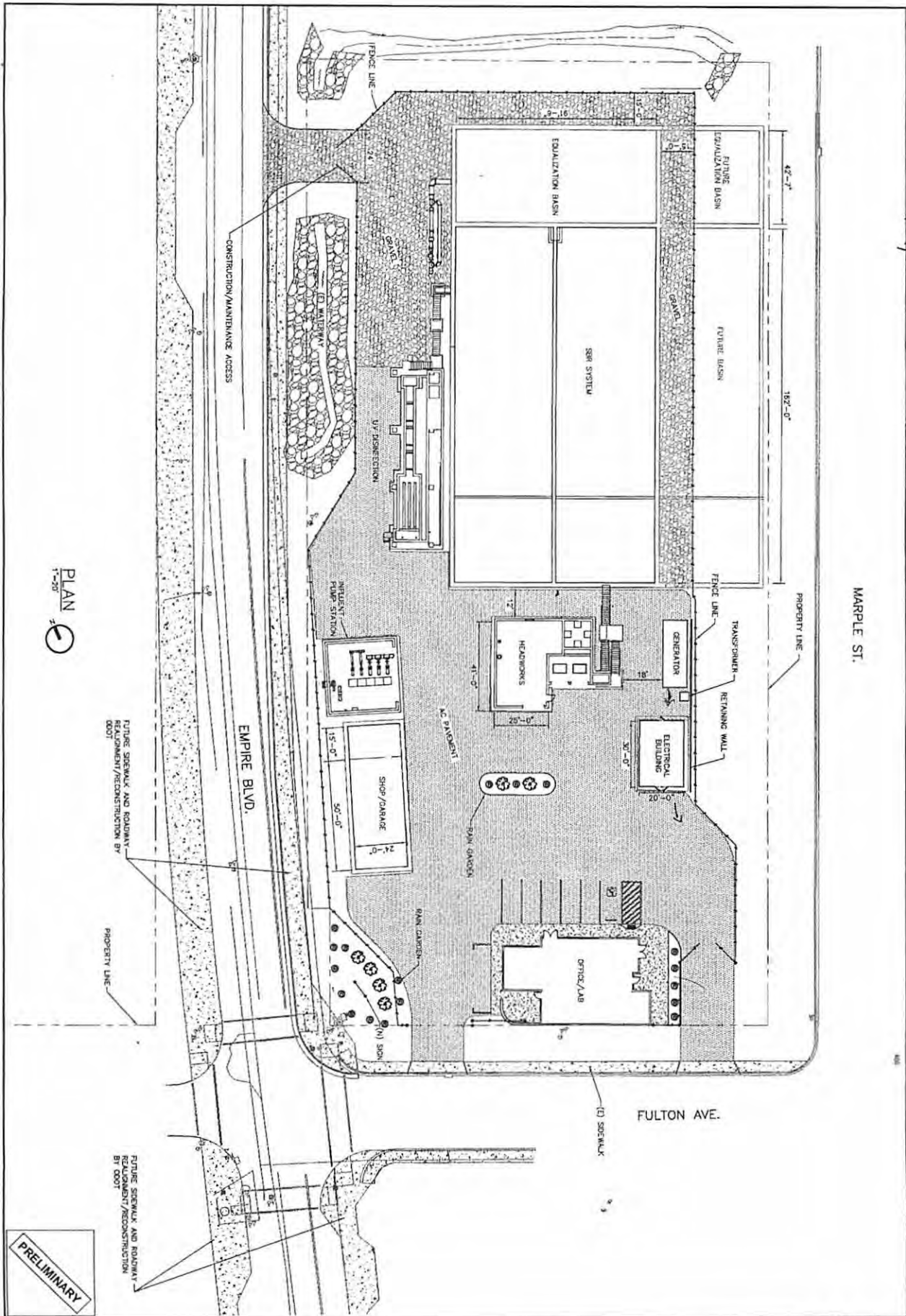
The contract for the pre-design services was awarded in November 2012. By completing a pre-design report in conformance with DEQ requirements, the City will be eligible to compete for State Revolving Fund (SRF) loans. Terms, conditions and interest rates for SRF loans are often more favorable than those we would get from a private lending institution.

RECOMMENDATION:

Provide staff comments and recommendation with regard to the site plan and architectural features.

ATTACHMENTS:

Site Plans & Elevations



PLAN
1"=20'

PRELIMINARY

CITY OF COOS BAY WWP 2 EXPANSION & UPGRADE
CIVIL
OVERALL SITE PLAN

DESIGN	JWD
DR	PLK
CHK	BY S
APVD	
NO.	DATE
REVISION	BY

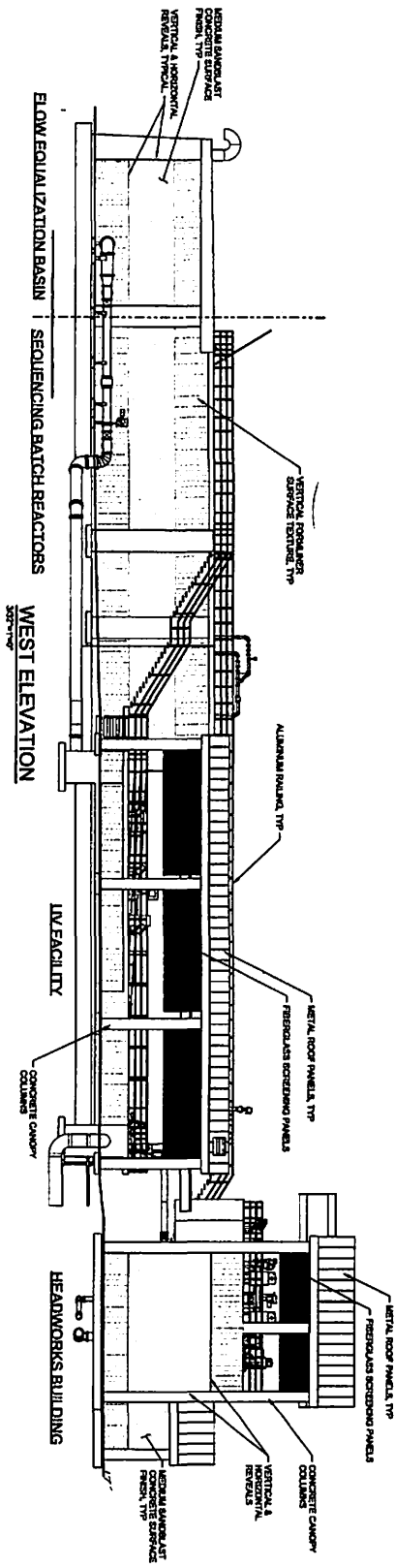
SN
CONSULTING ENGINEERS & GEOLOGISTS, INC.

CH2MHILL.

VERIFY SCALES
BASED ON ONE INCH ON ORIGINAL DRAWING

PRE-DESIGN

Agenda Item #5



30-A-3001, 2/28/2007

PRELIMINARY

30-A-3000
 DATE 02/20/07
 PROJECT NO. 463365

CITY OF COOS BAY WWTP 2 EXPANSION & UPGRADE
 SEQUENCING BATCH REACTORS
 ARCHITECTURAL
WEST ELEVATION

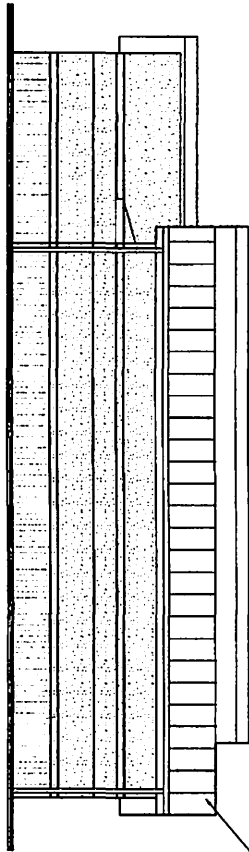
NO.	DATE	REVISION	BY

CH2MHILL.
 CONSULTING ENGINEERS & GEOLOGISTS, INC.

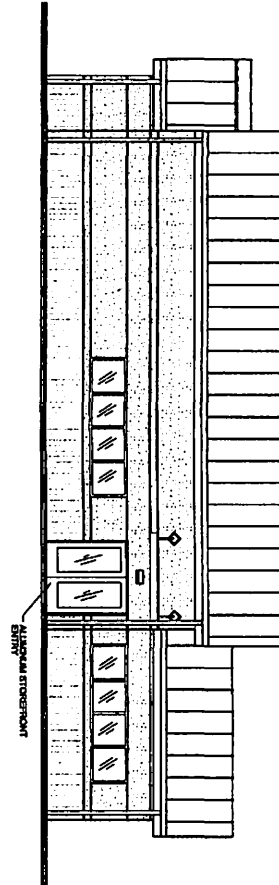
VERTICAL SCALE
 1" = 1'-0"

PRE-DESIGN

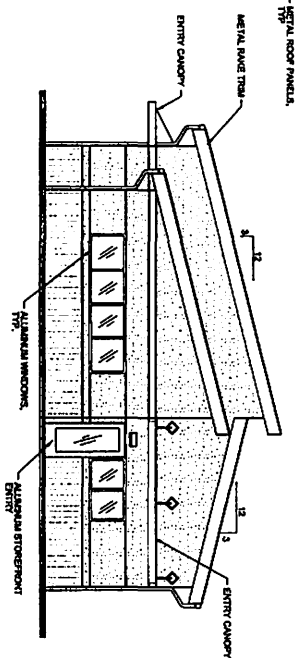
SOUTH ELEVATION



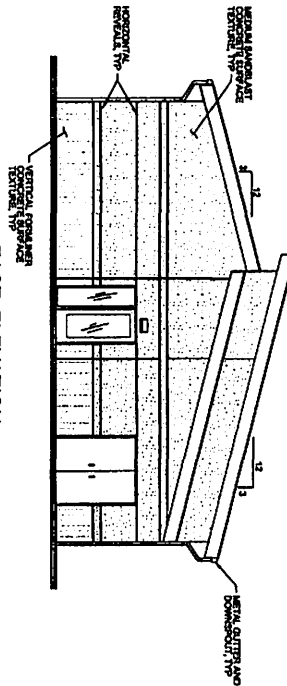
NORTH ELEVATION



WEST ELEVATION



EAST ELEVATION



PRELIMINARY

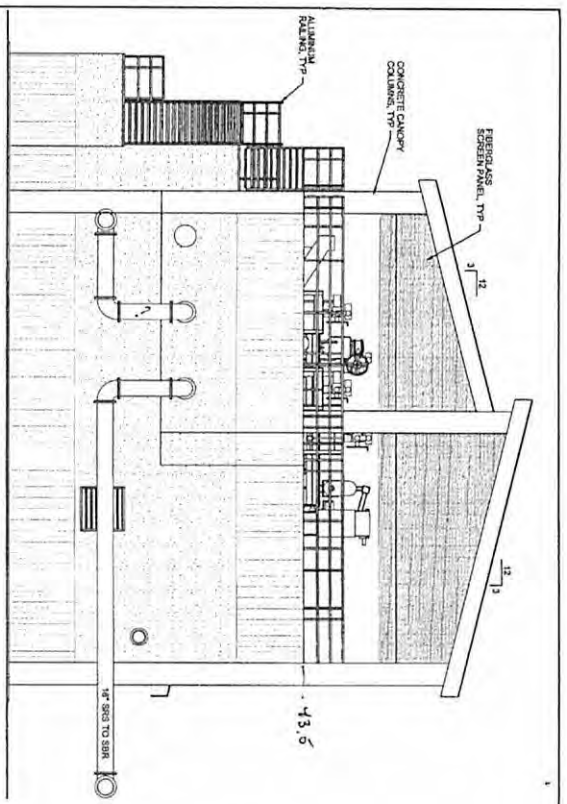
CITY OF COOS BAY WWTP 2 EXPANSION & UPGRADE
 CONTROL BUILDING
 ARCHITECTURAL
 ELEVATIONS

DESIGN	RPT				
CHK	WB				
APPROV	CM				
NO.	DATE	REVISION	BY		

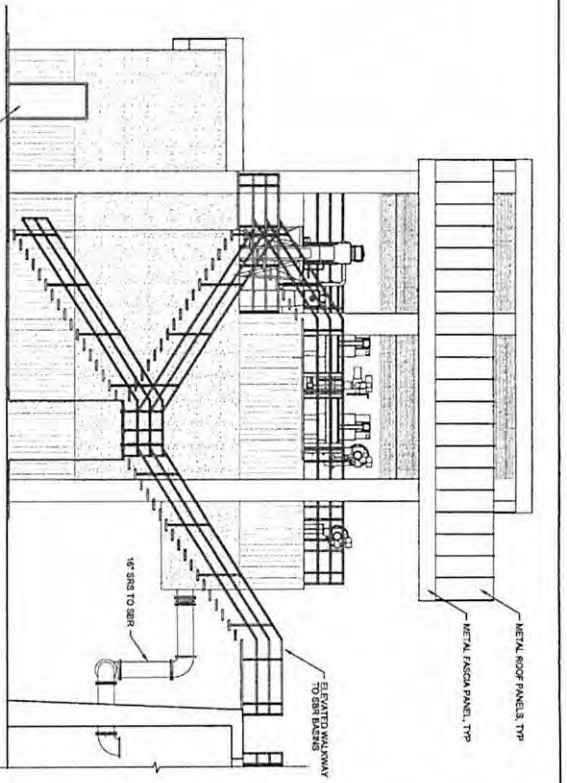
CH2MHILL.
 CONSULTING ENGINEERS
 & GEOLOGISTS, INC.

VERIFY SCALES
 1/8" = 1'-0" (1/8" ON
 ORIGINAL DRAWING)
 1/4" = 1'-0" (1/4" ON
 THIS PRINT. VERIFY
 SCALES ACCORDINGLY)

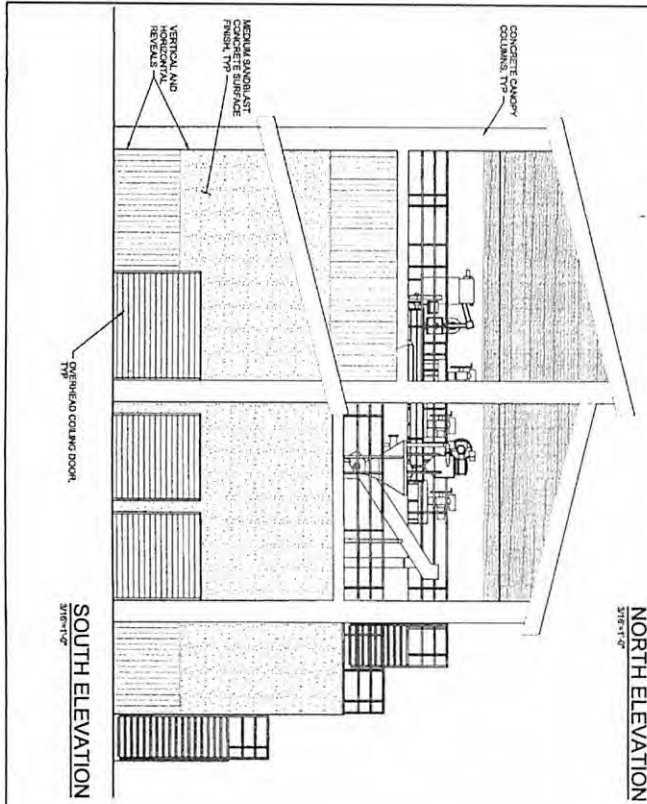
PRE-DESIGN



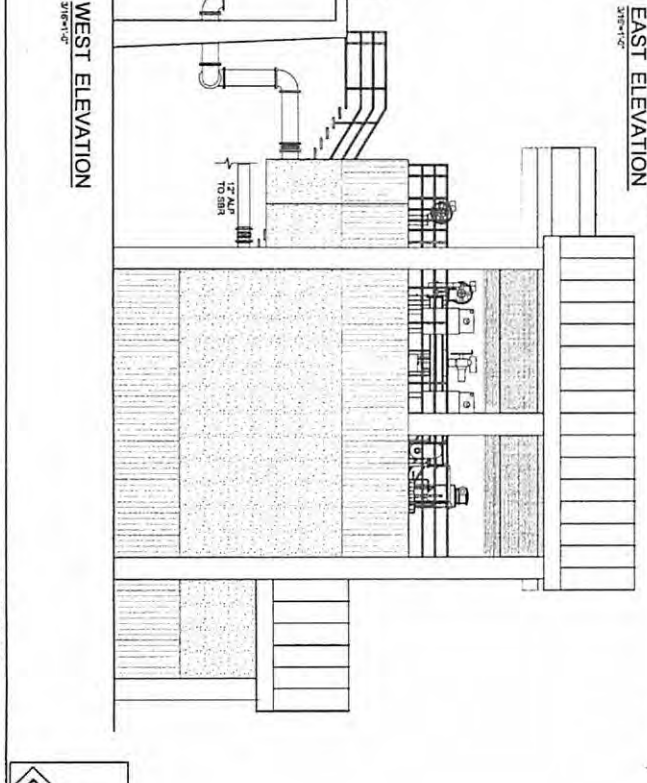
NORTH ELEVATION
S/E=1'-0"



EAST ELEVATION
S/E=1'-0"



SOUTH ELEVATION
S/E=1'-0"



WEST ELEVATION
S/E=1'-0"

20-A-3001_465556.dgn

PRELIMINARY

CITY OF COOS BAY WWTP 2 EXPANSION & UPGRADE
 SHEET 20-A-3000
 DATE 07/20/17
 PROJ. NO. 493556

DESIGN	RPT				
DR	WEL				
CHK					
APP'D	CWM	NO.	DATE	REVISION	BY

SN CH2MHILL.
 CONSULTING ENGINEERS & GEOLOGISTS, INC.

VERIFY SCALES
 BAR IS ONE INCH ON ORIGINAL DRAWING
 IF NOT ONE INCH ON THIS SHEET, ADJUST SCALES ACCORDINGLY

PRE-DESIGN