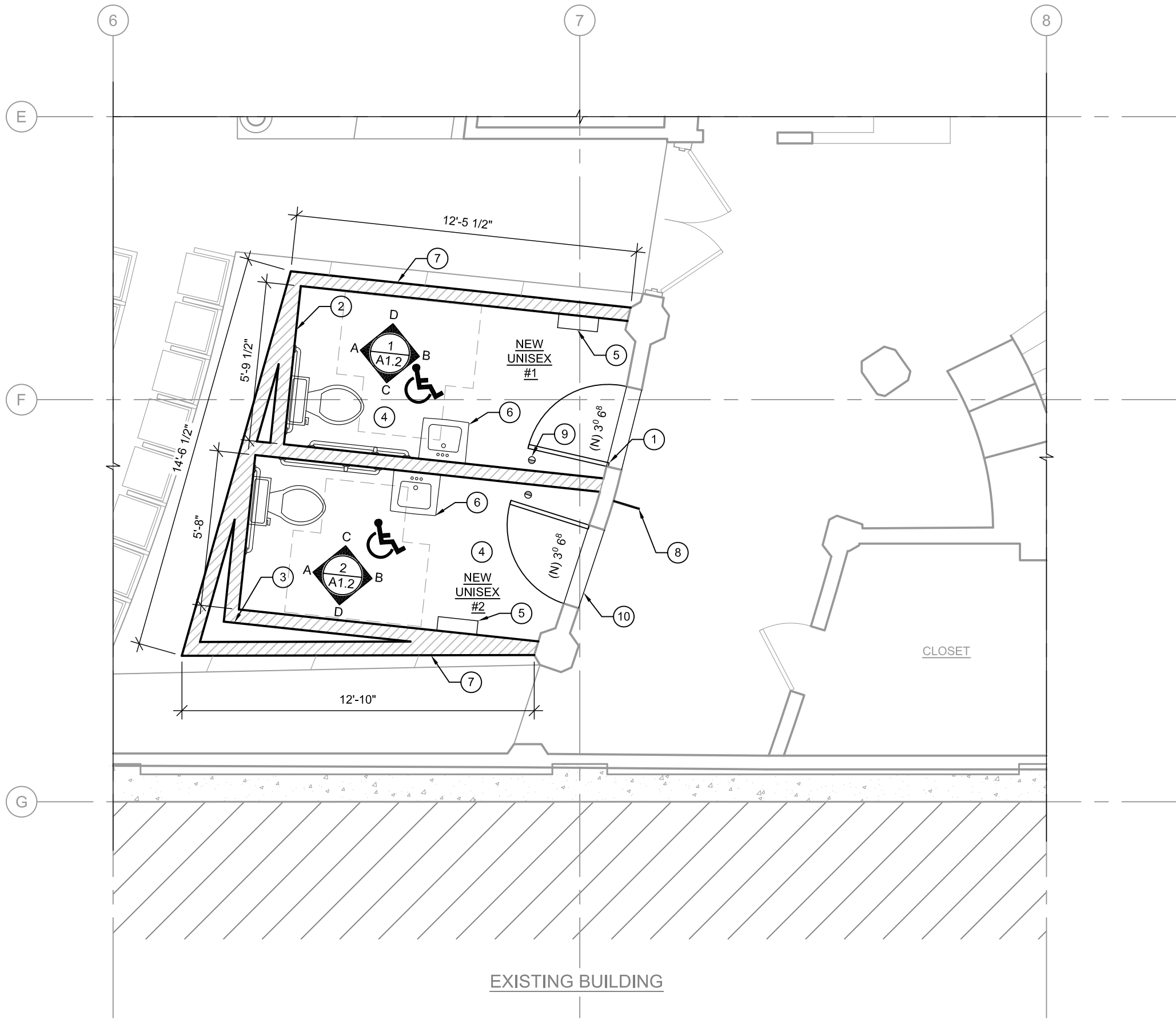


1  
A1.1  
**DEMOLITION FLOOR PLAN**  
1/4"= 1'-0"



1  
A1.1  
**PROPOSED RESTROOM FLOOR PLAN**  
1/4"= 1'-0"

**RESTROOM PLAN KEYED NOTES**

- (N) SOLID WOOD CORE DOOR. SEE INTERIOR ELEVATIONS. PROVIDE WEATHER STRIPPING AT DOOR FOR SOUND TRANSMISSION MITIGATION.
- (N) WALL W/ STAGGERED 2x4 STUDS @ 8" O.C. (2 WALLS AT 16" O.C. - SEE STRUCTURAL) WITH DOUBLE LAYER OF 1/2" TYPE X GYPSUM BOARD EACH SIDE AND "FIBERGLAS PINK" OR APPROVED EQUAL ACOUSTIC INSULATION (COMPLETELY FILL CAVITY) TYP. SEE DETAILS AND INTERIOR ELEVATIONS FOR MORE INFORMATION.
- AT DOUBLE WALL LOCATIONS PROVIDE 2x6 @ 16" O.C. SINGLE STUD WALLS WHERE SHOWN W/ FINISHES AS STATED ABOVE ON OUTSIDE FACE ONLY (FILL CAVITY WITH INSULATION AS STATED IN NOTE 2)
- TILE OVER CONCRETE FLOOR. SEE INTERIOR ELEVATIONS.
- COMBINATION TRASH RECEPTACLE/TOWEL DISPENSER. (SEE INTERIOR ELEVATIONS)
- NEW PLUMBING FIXTURE, TYP. SEE PLUMBING PLANS.
- AT EXTERIOR SIDES OF NEW WALLS, PROVIDE RED PATTERNED CARPET TO MATCH (E) OVER ENTIRE WALL. (GLUED) RUN SEAMS VERTICAL ON WALL AND PROVIDE WOOD STAINED BATTEN TO MATCH (E) AT EXTERIOR OF CONCESSION WALL AT ALL SEAMS AND AT BTM. OF WALL. PROVIDE SAMPLE MOCK UP OF BATTEN WITH STAIN FOR APPROVAL PRIOR TO CONSTRUCTION.
- PROVIDE NEW PERPENDICULAR OVERHEAD RESTROOM SIGN AT (E) WALL BETWEEN RESTROOMS AS SHOWN (COORDINATE COLOR WITH OWNER PRIOR TO CONSTRUCTION).
- PROVIDE NEW FLOOR-MOUNTED DOOR STOP WITH RUBBER BUMPER AT APPROXIMATE LOCATIONS SHOWN ON PLAN. (DOOR TO STOP CLEAR OF WALL)
- PROVIDE NEW ALUMINUM TRANSITION (BLACK) AT BTM. OF DOOR AT THRESHOLD. PROVIDE TRANSITION WIDTH SUFFICIENT TO COVER ENTIRE THRESHOLD SO THAT EACH TILE FINISH IS NOT SEEN FROM THE OPPOSITE SIDE OF THE DOOR. (MIN. 7").

NOTE: G.C. TO PROVIDE ALL ADA SIGNAGE AS REQUIRED BY CODE INCLUDING BUT NOT LIMITED TO: ADA WALL PLACARD WITH BRAILLE IDENTIFICATION, GEOMETRIC DOOR SIGN, AND DOOR HARDWARE WITH OCCUPANCY INDICATOR (COORDINATE COLOR WITH OWNER PRIOR TO CONSTRUCTION).

**CODE REVIEW NARRATIVE:**

THE SCOPE OF THIS PROJECT INCLUDES VOLUNTARY UPGRADES IN ORDER TO REMOVE ARCHITECTURAL BARRIERS AND INCREASE ADA ACCESSIBILITY. THE OWNER IS VOLUNTARILY PROVIDING ADA ACCESSIBLE RESTROOMS ON THE GROUND FLOOR WHERE NONE EXISTED BEFORE. BECAUSE ALL UPGRADES ARE VOLUNTARY AND CONSIST OF ADA IMPROVEMENTS, NO FURTHER CODE REVIEW IS REQUIRED BEYOND CODE COMPLIANCE OF ACCESSIBILITY FEATURES IN THE RESTROOMS THEMSELVES.

**KEY PLAN NOTES**

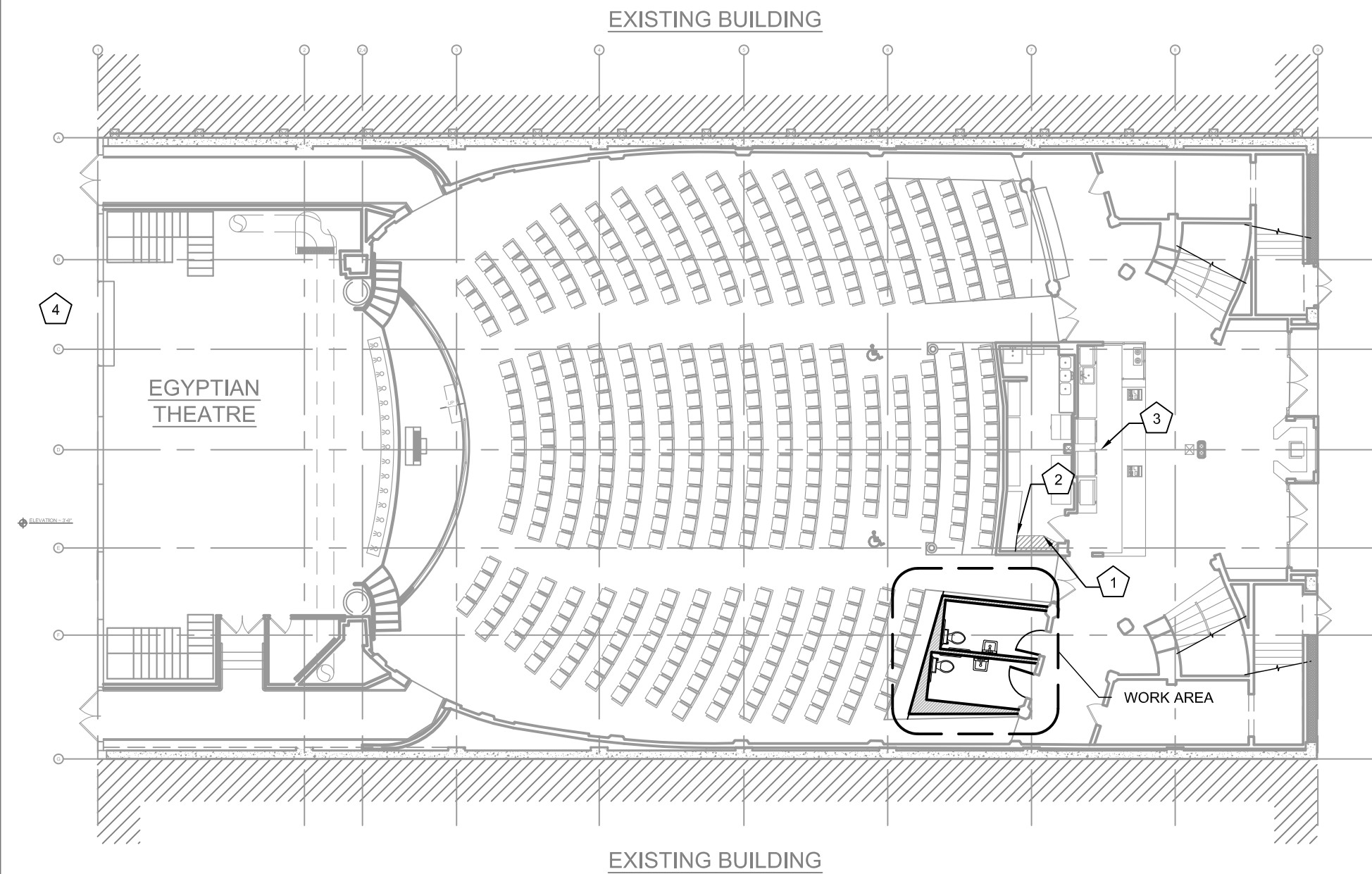
- AT THIS LOCATION G.C. TO REMOVE CABINET BACK TO CORNER AS ILLUSTRATED ON PLAN AND IN ELECTRICAL PLANS AND ELEVATIONS.
- PROVIDE NEW DOORS AND CABINET FACE AT LIMITS OF CABINETRY DEMOLITION. PROVIDE ALL NECESSARY ALTERATIONS TO COUNTERTOP, BACKSPLASH, AND CABINETRY IN ORDER TO MATCH (E) FINISHES AND FUNCTIONALITY. PROVIDE FRP PANEL OR SIMILAR FINISH TO MATCH EXISTING AT LIMITS OF DEMOLITION AT WALL. VERIFY PANEL CLEARANCES WITH ELECTRICAL ENGINEER/ELECTRICIAN PRIOR TO CONSTRUCTION.
- SEE MECHANICAL PLANS FOR LOCATION OF 8" EXHAUST VENT IN CORNER OF PROJECTION ROOM (ABOVE). G.C. TO PROVIDE NEW FRAMED BOX-OUT AROUND VENT AND MATCH ADJACENT FINISHES. (1/2" GYP WITH TAPE, TEXTURE, AND PAINT AT A MINIMUM)
- COORDINATE STAGING AREA AT REAR OF BUILDING WITH OWNER PRIOR TO CONSTRUCTION. ALL ACCESS MUST BE MAINTAINED DURING CONSTRUCTION FOR FIRE AND LIFE-SAFETY REASONS AND FOR DELIVERY ACCESS TO REAR OF ADJACENT BUILDINGS.

**PROJECT NOTES:**

**GENERAL INFORMATION:**

- VERIFY ALL DIMENSIONS PRIOR TO CONSTRUCTION. NOTIFY ENGINEER WHERE DISCREPANCIES OCCUR.
- G.C. SHALL COORDINATE ALL NON-BID ITEMS (INTERIOR FINISH COLORS ETC.) W/ OWNER PRIOR TO CONSTRUCTION IF NOT SPECIFIED IN THESE PLANS.
- G.C. SHALL PROVIDE ALL APPROPRIATE BACKING, FASTENERS, AND CONCRETE FASTENERS AS REQUIRED FOR BATHROOM ACCESSORIES AND OTHER MISCELLANEOUS ITEMS.
- G.C. TO COORDINATE INSTALLATION OF ALL UTILITIES W/ RESPECTIVE SUPPLIERS/SUBCONTRACTORS PRIOR TO CONSTRUCTION, TYPICAL.
- VERIFY (E) UTILITY LAYOUT, AND SAWCUT FOR (N) UTILITIES AS REQUIRED.
- G.C. SHALL PROVIDE FULLY FURNISHED AND FINISHED RESTROOM FACILITY. G.C. TO COORDINATE WITH OWNER FOR COLOR SELECTION WHERE REQUIRED.
- G.C. TO IDENTIFY AND REMEDIATE HAZARDOUS MATERIALS.
- SEE ADDITIONAL NOTES ON PLAN SET FOR FURTHER INFORMATION.
- G.C. TO PROVIDE MATERIAL SUBMITTALS FOR ALL FINISHES PRIOR TO START OF CONSTRUCTION. FOR ALL FINISHES THAT REQUIRE FIELD PAINTING, STAINING, OR OTHER MODIFICATION OF INSTALLED FEATURES, G.C. TO SUBMIT MOCK-UP OF FINAL PRODUCT PRIOR TO FINAL APPROVAL AND INSTALLATION.
- SAMPLES SHALL BE SUBMITTED IN A TIMELY MANNER IN ORDER TO ALLOW OWNER ADEQUATE TIME FOR REVIEW AND APPROVAL. G.C. TO ALLOW A MINIMUM OF 1 WEEK FOR REVIEW AFTER SUBMITTAL.

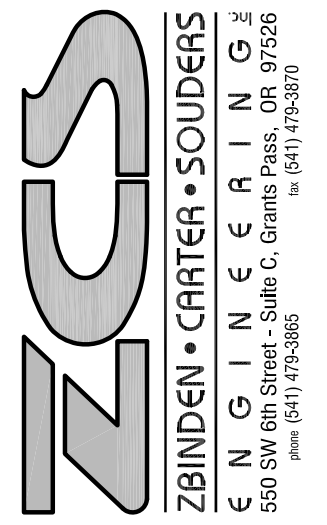
SPECIAL NOTE:  
G.C. TO TAKE ALL NECESSARY STEPS/PRECAUTIONS IN ORDER TO PROTECT ALL FEATURES OF EXISTING BUILDING THAT ARE TO REMAIN IN AREAS OF CONSTRUCTION AND ALL FEATURES IN OTHER AREAS. PROTECT ALL FEATURES FROM DAMAGE DUE TO MATERIALS STORAGE AND HANDLING AS WELL AS ACCESS.



1  
A1.1  
**KEY PLAN**  
1/16"= 1'-0"

CITY OF COOS BAY

EGYPTIAN THEATRE RESTROOMS



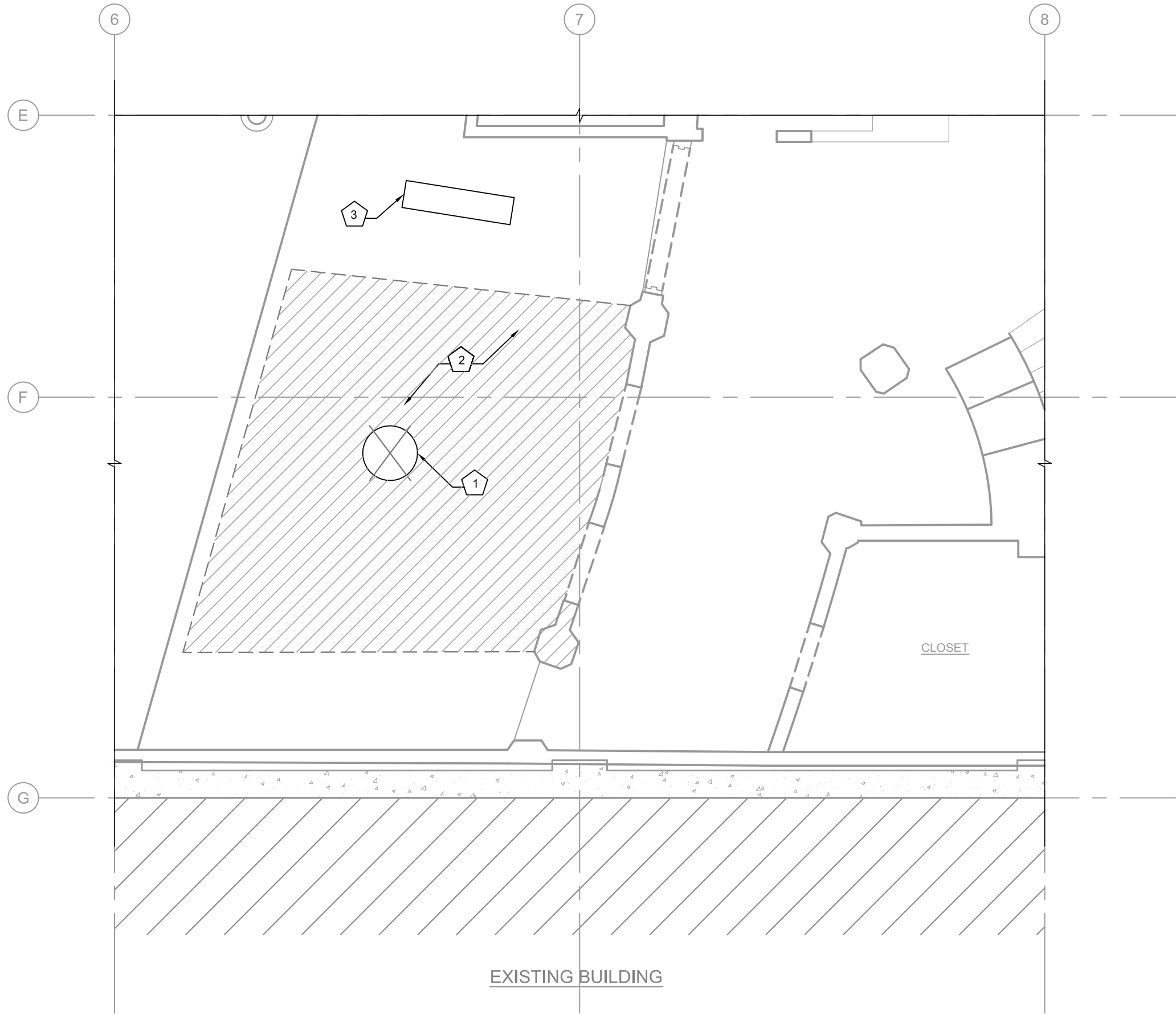
PROJECT NO: G-0586-13  
DRAWN: SVM  
CHECKED: SEA  
DATE: 06-24-13



EXPIRES: 12/31/13

RESTROOM PLANS

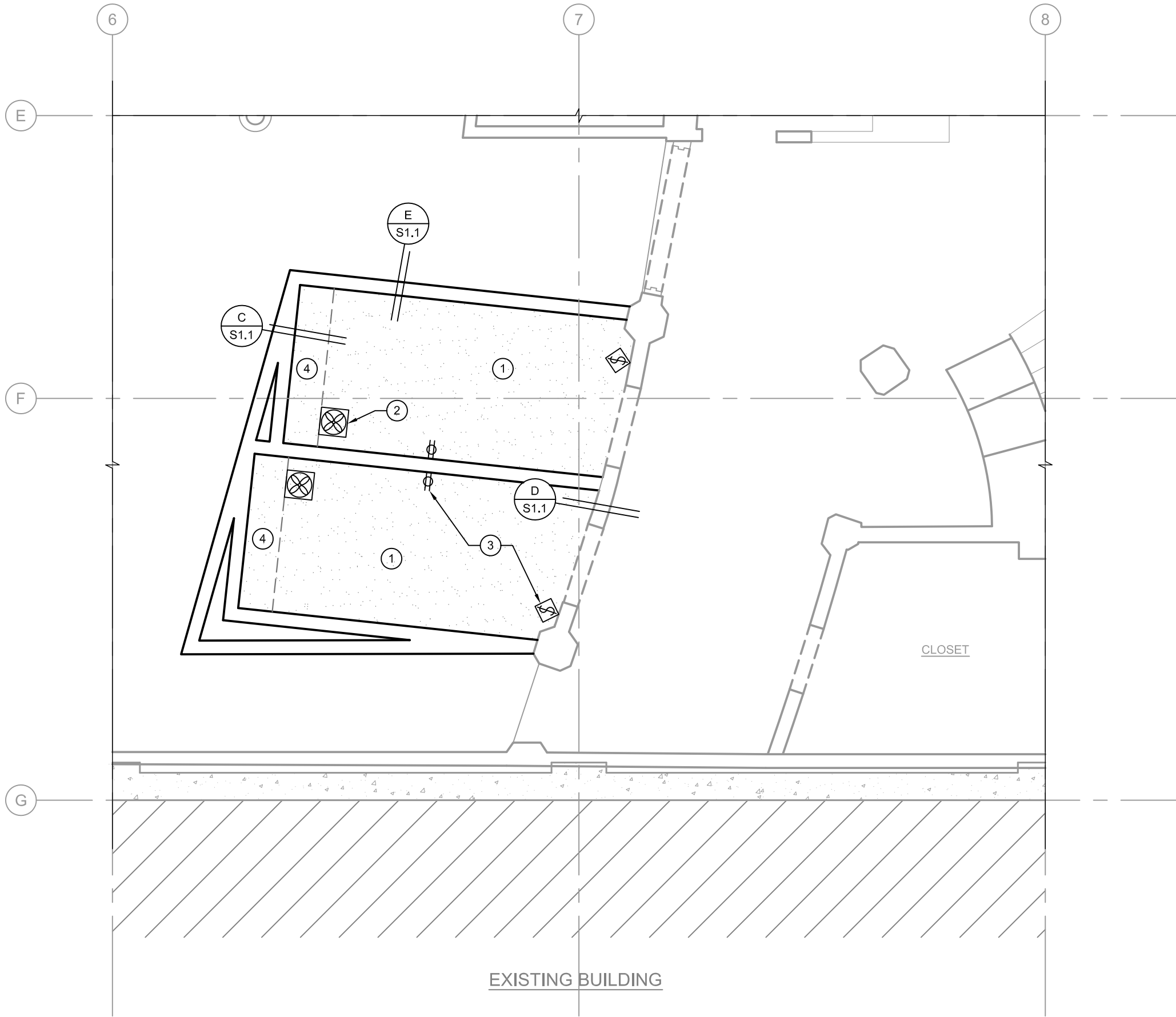
A1.1



1  
A1.1  
**CEILING DEMOLITION PLAN**  
1/4"= 1'-0"

**CEILING DEMO PLAN KEYED NOTES**

- 1 REMOVE EXISTING SURFACE MOUNTED STYLIZED LIGHT FIXTURE, SALVAGE, AND DELIVER TO OWNER
- 2 REMOVE CEILING FINISHES WITHIN LIMITS SHOWN ON PLAN AND IN DETAILS FOR INSTALLATION OF NEW CEILING AND WALLS, COORDINATE INSTALLATION OF ALL UTILITIES PRIOR TO FINISH RE-INSTALLATION.
- 3 G.C. TO VERIFY EXISTING FLUORESCENT LIGHT FIXTURE REMAINS CLEAR OF NEW WALLS, REMOVE AND RELOCATE AS REQ'D TO PROVIDE LIGHT IN NEW 'HALLWAY'. PATCH FINISHES AS REQUIRED AND SUBMIT FINISH MOCK-UP PRIOR TO PATCHING OPERATIONS.



1  
A1.1  
**REFLECTED CEILING PLAN**  
1/4"= 1'-0"

**REFLECTED CEILING PLAN KEYED NOTES**

- 1 DOUBLE LAYER OF 1/2" TYPE X GYPSUM BOARD CEILING, TEXTURED TO MATCH EXISTING. PLACE SINGLE LAYER OF OWENS-CORNING QUIET-ZONE ACOUSTICAL BATTS OR APPROVED EQUAL ABOVE CEILING
- 2 NEW EXHAUST FAN PER MECHANICAL DRAWINGS (FIELD PREP AND PAINT GRILLE TO MATCH CEILING COLOR - 1 COAT PRIMER AND 2 COATS SATIN LATEX PAINT).
- 3 SWITCHING AND POWER PER ELECTRICAL PLANS. PROVIDE WHITE COLOR AT ALL COVERS AND FIXTURES FOR ELECTRICAL.
- 4 SLOPED CEILING SOFFIT. SEE STRUCTURAL DETAILS AND INTERIOR ELEVATIONS FOR MORE INFORMATION.

CITY OF COOS BAY  
EGYPTIAN THEATRE RESTROOMS

**ZCS**  
ZBIDEN • CHARTER • SOUDERS  
ENGINEERING  
5550 SW 8th Street - Suite C, Grants Pass, OR 97526  
phone (541) 475-3885 fax (541) 475-3870

PROJECT NO: G-0586-13  
DRAWN: SVM  
CHECKED: SEA  
DATE: 06-24-13

REGISTERED PROFESSIONAL  
ENGINEER  
STATE OF OREGON  
No. 19,200  
LAYS EMMETT ALLEN

EXPIRES: 12/31/13  
REFLECTED CEILING  
PLAN

A1.2


$$1/2'' = 1'-0''$$

$$1/2'' = 1'-0''$$


TILE FINISH

1/2" CEMENT

WATER RESISTANT GYPSUM BOARD

- STAGGERED STUDS

INSULATION PER PLAN

$$1'' = 1' - 0''$$

- 1 AMERICAN STANDARD WALL-MOUNT LAVATORY PER PLUMBING PLANS (PROVIDE WHITE INSULATED TRAP AND HOT WATER COVERS, TYP.)
- 2 AMERICAN STANDARD TOILET PER PLUMBING PLANS
- 3 BORRICK OR APPROVED EQUAL 1-1/2" O.D. STAINLESS STEEL GRAB BARS AS SHOWN WITH NON-SLIP SURFACE AND CONCEALED FLANGE MOUNTING
- 4 JELD-WEN MODEL 0028 2-PANEL DOOR OR APPROVED EQUAL SOLID WOOD CORE DOOR - PAINT GOLD TO MATCH OTHER LOBBY DOORS, PROVIDE MIN. 20 MINUTE RATED ASSEMBLY; HARDWARE TO BE L-SERIES MORTISE LOCK AS SHOWN, OPERATED BY A LEVER HANDLE AND EZ TURN TUBO BOLT WITH BRONZE FINISH TO MATCH (E) HARDWARE; PROVIDE OCCUPANCY INDICATOR, PROVIDE METAL DOOR FRAME (BLACK FINISH) FINISH WITH CASING ON RESTROOM SIDE (SEE NOTE 14 FOR FINISH) AND METAL CASING (BLACK FINISH) FINISH ON LOBBY SIDE. LAP CASING OVER FINISHES AT EACH SIDE AND FIELD VERIFY WALL WIDTH FOR FRAME ORDERING. MAKE SURE DOOR TO BE CECO DOORS OR APPROVED EQUAL.
- 5 TEMPERED GLASS FRAME-LESS MIRROR (DELETE TILE AS NOTED TO INSTALL MIRRORS AND SET TIGHT INTO TILE CAVITY AT WALL)
- 6 BORRICK B-3942 SEMI-RECESSED CONVERTIBLE PAPER TOWEL DISPENSER/STAINLESS RECEPTACLE OR APPROVED EQUAL. INSTALL PER MANUFACTURER'S SPECIFICATIONS, (MEET MUST ALL AREA REQUIREMENTS)
- 7 BORRICK B-4063 STAINLESS STEEL RECESSED SOAP DISPENSER OR APPROVED EQUAL, (PLACEMENT PER ADA STANDARDS)
- 8 BORRICK B-683 STAINLESS STEEL RECESSED TOILET TISSUE DISPENSER OR APPROVED EQUAL

- TILE WAINSCOT WALL FINISH - FIELD TILE IS AMERICAN  
OLEAN UNGLAZED CERAMIC MOSAICS 2"x2" (CAPPUCCINO  
A78) ACCENT TILE IS DAL-TILE GLAZED 2"x2" (BLACK 6421).  
PLACE 75% FIELD, 25% ACCENT. (TYP.) - RANDOM PATTERN

- 11 TILE FLOOR FINISH - AMERICAN OLEAN UNGLAZED CERAMIC MOSAICS 2"x2" (CAPPUCCINO A78) (TYP.)

- 12 TILE COVE/TRANSITION - AMERICAN OLEAN UNGLAZED CERAMIC MOSAICS 2"x1" (CAPPUCCINO A78) (TYP.)

- 13 TEXTURED AND PAINTED WALL AND CEILING FINISH - LIGHT ORANGE PEEL AT WALLS AND CEILINGS. PAINT 1 COAT PRIMER AND 2 FINISH COATS OF SATIN LATEX KELLY MOORE (SPANISH SAND 231) OR APPROVED EQUAL. (TYP.)

- 14 PAINTED CASING FINISH - 1COAT PRIMER SUITABLE FOR METAL SUBSTRATE AND 2 FINISH COATS OF SEMI-GLOSS LATEX KELLY MOORE (SPANISH SAND) OR APPROVED EQUAL. (TYP.) (G.C. TO PREP METAL FOR RE-FINISH IN FIELD)

- 15 LIGHT FIXTURE PER ELECTRICAL PLANS (OIL-RUBBED BRONZE FINISH)

- 16 POINT OF USE WATER HEATER - SEE PLUMBING PLAN

NOTE: TILE BOND COAT TO BE LATICRETE 4237. PROVIDE 1/2" THICK CEMENT BACKER BOARD AT WAINSCOT. PROVIDE REINFORCED CRACK ISOLATION TAPE TO SPAN CONSTRUCTION JOINTS AND OTHER CRACKS AT CONCRETE SLABS. PROVIDE MATTE GROUT SEALER AS RECOMMENDED BY MAN. WITH POLYMER MODIFIED GROUT BY HYDROCEMENT, CUSTOM BUILDING PRODUCTS, OR APPROVED (SUBMIT "TAN" GROUT COLOR SAMPLES FOR APPROVAL PRIOR TO CONSTRUCTION)



PROJECT NO: G-0586-1

RAWN: SV

CHECKED: \_\_\_\_\_ SE \_\_\_\_\_

DATE: 06-24-1



EXPIRES: 12/31/13
-------------------

INTERIOR ELEVATIONS:

### A1.3

