

Project: City of Coos Bay – Egyptian Theatre Restrooms

Date: July 11, 2013

Issued By: Sy Allen, PE – ZCS Engineering, Inc.

### PROJECT ADDENDUM #3

This Addendum shall be incorporated into the Project Documents.

---

CONTRACTORS MUST ACKNOWLEDGE RECEIPT OF THIS  
ADDENDUM BY SIGNING BELOW.

CONTRACTORS MUST SUBMIT THIS PAGE WITH THEIR RESPONSE IN  
ADDITION TO ACKNOWLEDGEMENT ON ANY OTHER BID DOCUMENT(S).

FAILURE TO EXECUTE AND RETURN THIS  
ADDENDUM FORM WILL DISQUALIFY YOUR BID.

Company Name: \_\_\_\_\_

Address: \_\_\_\_\_

Telephone: \_\_\_\_\_ Email: \_\_\_\_\_

Signature: \_\_\_\_\_ Date: \_\_\_\_\_

Printed Name: \_\_\_\_\_

Title: \_\_\_\_\_

*This space intentionally left blank.*

## **Clarifications**

1. Plumbing plan scale on sheet P-2 should read "1/4" = 1'-0".
2. Plumbing plans show entire scope of work. Scope of work to be performed by plumbing contractor has been limited by the special note on sheet A1.1. Trenching, backfill, and replacement/patching of floor finishes to be by owner for plumbing supply and waste lines. See note on sheet A1.1 for more information.
3. Interior elevations on sheet A1.3 show pictures of the tile finish on only two walls. These pictorial representations are for reference only. Tile finish is to be installed on all four interior walls up to the height specified.
4. The scope of work for unisex restroom #2 (labeled previously as a bid-alternate) shall be included in the base bid. The bid alternate described in note 2 on sheet E-3 shall remain as previously detailed.
5. The ceiling demo plan (sheet A1.2) shows demolition of existing ceiling finishes only within the limits of the new walls. The contractor may demolish additional areas of the existing ceiling as required to complete work, but must patch said finishes to match existing conditions and submit a finish mock-up prior to patching operations.

## **Drawings**

1. Sheet Add3-1 shall be added to the contract drawings as part of the plan set. This sheet contains clarifications on the construction and detailing of the changes to the existing wall at the new restroom. All features of construction shown on this sheet apply or are similar for restroom #2.
2. Mechanical sheets M-2, M-3, and M-3.1 have been updated to reflect changes to exhaust routing and ceiling construction.
3. Electrical sheet E-4 has been updated to reflect changes to lighting fixture re-installation.

**Signed:**



---

**Sy Allen, PE**  
**ZCS Engineering, Inc.**

**Attachments**

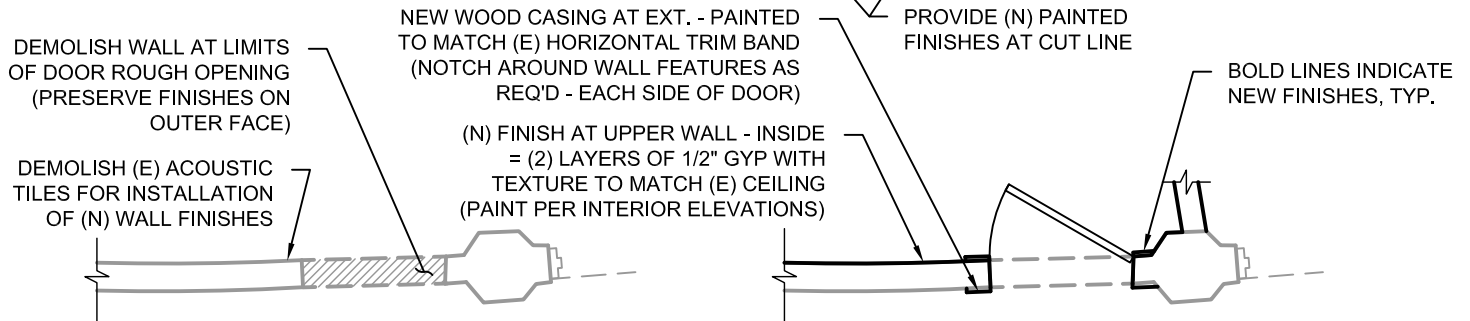
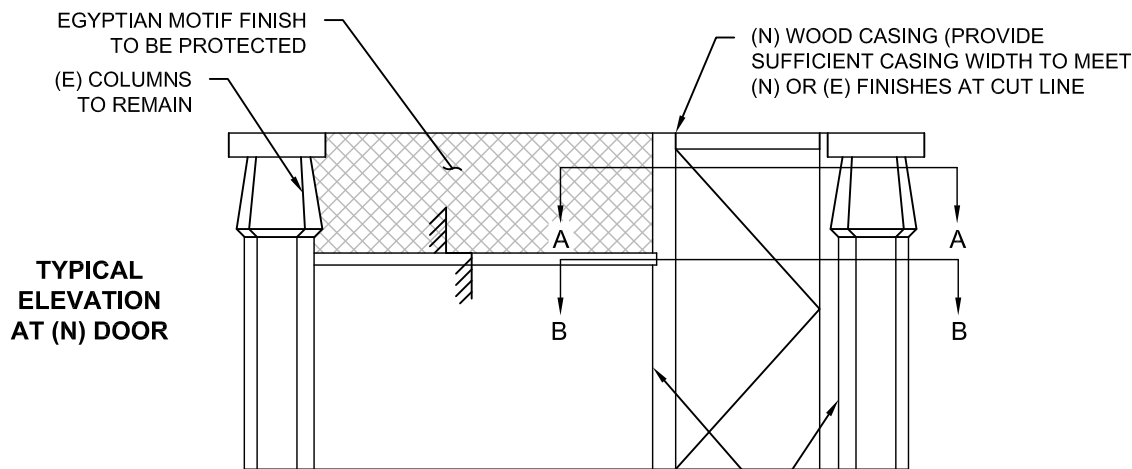
Add3-1

M-2

M-3

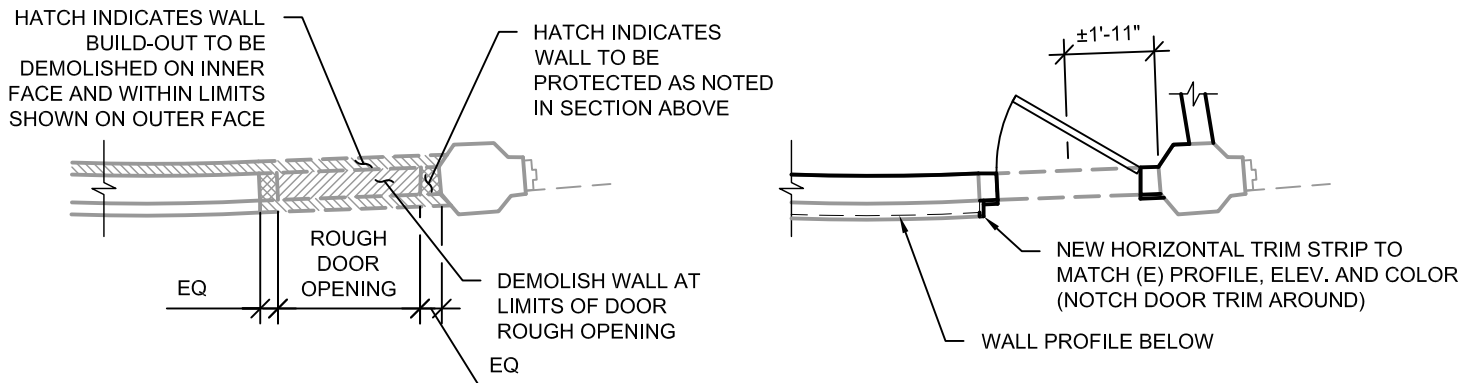
M-3.1

E-4



**SECTION 'A-A' DEMO**

**SECTION 'A-A' NEW CONSTRUCTION**

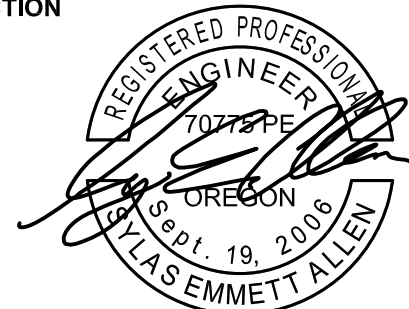


**SECTION 'B-B' DEMO**

**SECTION 'B-B' NEW CONSTRUCTION**

**GENERAL FINISH NOTES:**

1. PROVIDE NEW FINISHES TO MATCH (E) AT RETURN OF HORIZONTAL TRIM BAND AND WALL RETURN BELOW (SEE SECTION 'B-B') ASSUMED FINISH IS PAINTED PLASTER - FIELD VERIFY.
2. ALL FEATURES OF CONSTRUCTION NOT SHOWN TO BE PER ORIGINAL CONTRACT DOCUMENTS. IF CONFLICTS OCCUR, NEW DOCUMENTS SHALL SUPERCEDE OLDER DOCUMENTS. CONTACT ZCS ENGINEERING IN THE CASE OF FIELD CONFLICTS.
3. SUBMIT MOCK-UP OF FINISH TEXTURE W/ PAINT FOR APPROVAL PRIOR TO PATCHING/FINISH OPERATIONS.
4. G.C. TO PROVIDE FIELD INSTALLED WOOD CASING OVER METAL DOOR FRAME IN FIELD - PROVIDE NON-SHRINK CAULK FROM CASING TO FRAME. PAINT FRAME AND CAULK IN FIELD TO MATCH ADJACENT FINISHES - COLOR BREAK FROM INSIDE TO OUT TO OCCUR AT DOOR.



**EXPIRES: 12/31/13**



**CITY OF COOS BAY**

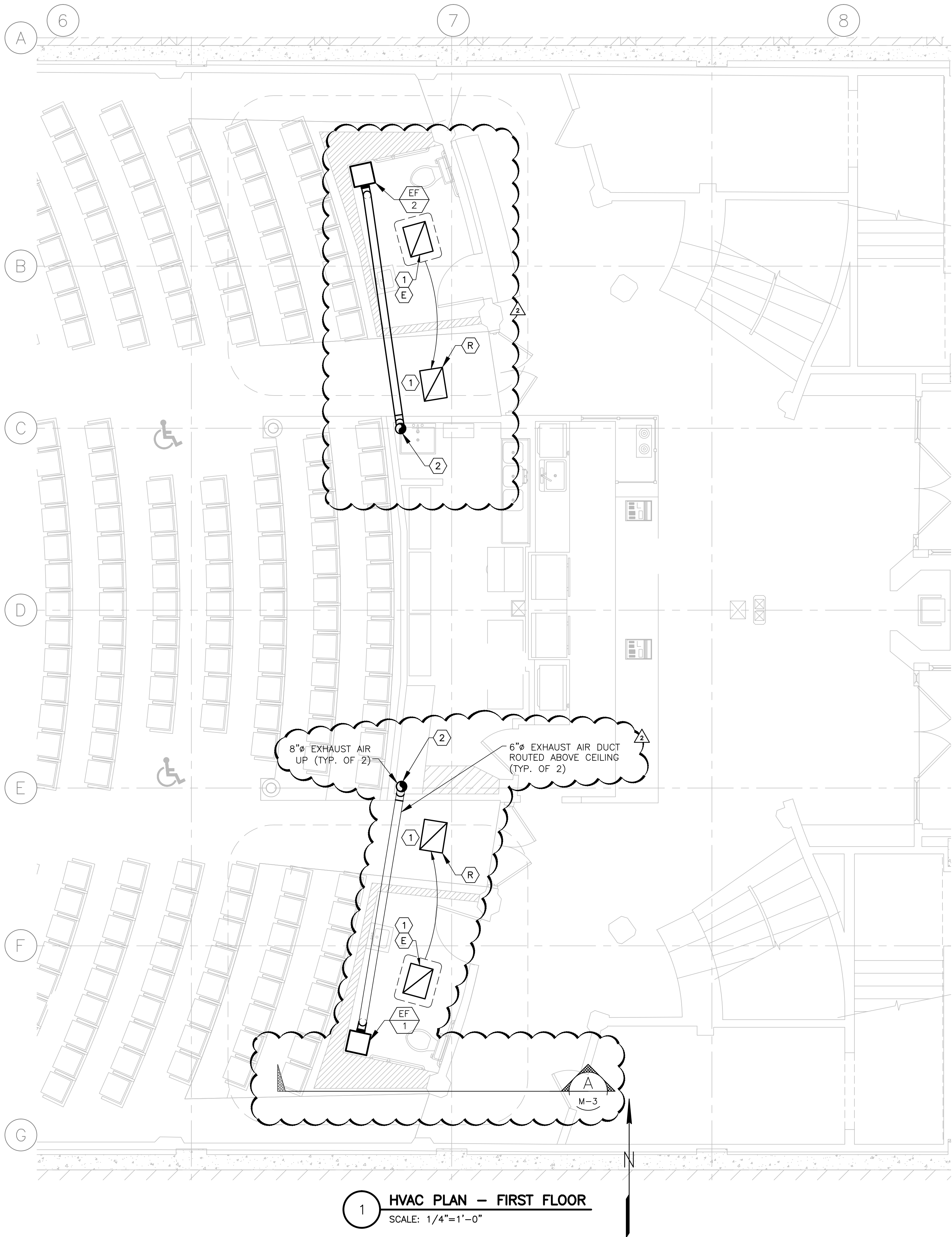
**EGYPTIAN THEATRE RESTROOMS**

PROJECT NO: G-0586-13  
 DRAWN: SVM  
 CHECKED: SEA  
 DATE: 7-10-13

**ADD3-1**



M:\Projects\1325 Egyptian Theatre\1325-HVAC.dwg, 7/11/2013 11:37:16 AM, jjones



GENERAL NOTES

KEYED NOTES

1

RELOCATE EXISTING 18x24 (APPROX.) RETURN AIR GRILLE AND RETURN AIR DUCT ABOVE CEILING TO CORRIDOR AS SHOWN.

2

FOR CONTINUATION SEE

1

M-3

FAN SCHEDULE										
TAG	SERVICE	TYPE	CFM	ESP	ELECTRICAL			MANUFACTURER	MODEL	NOTES
					VOLTS	PHASE	WATTS			
EF-1	WOMEN'S RR	CEILING	72	0.875"	115	1	80	GREENHECK	SP-B110	1-5
EF-2	MEN'S RR	CEILING	72	0.875"	115	1	80	GREENHECK	SP-B110	1-5

NOTES:

1. PROVIDE WITH UNIT MOUNTED SOLID STATE SPEED CONTROL FOR AIR BALANCING.

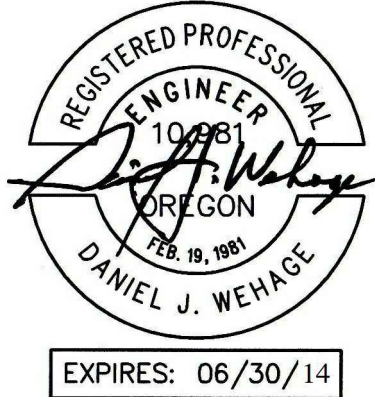
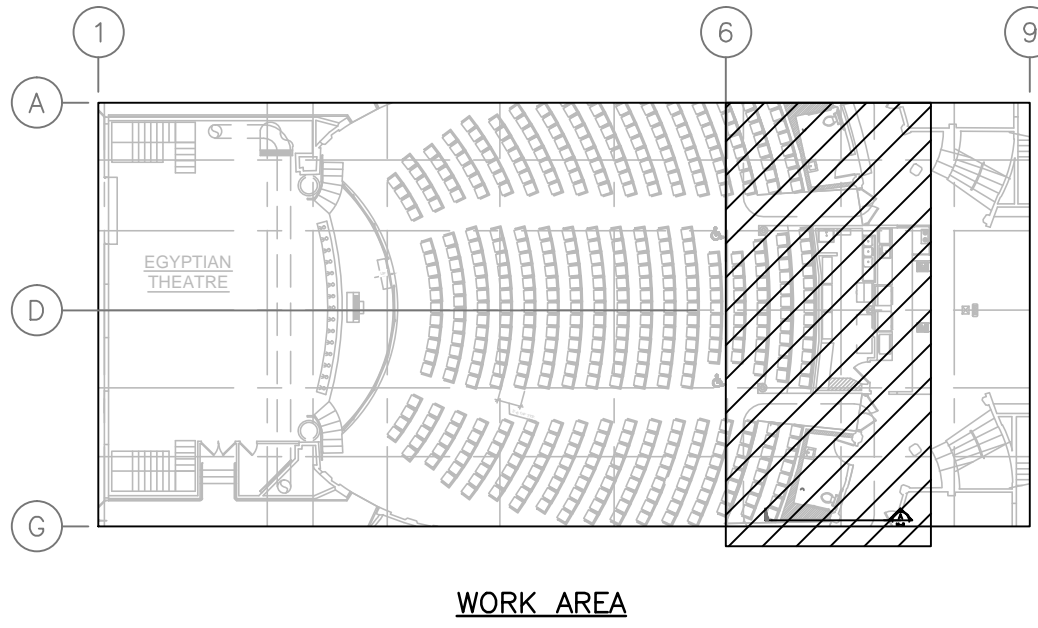
2. CONTROL ON-OFF OPERATION WITH LIGHT SWITCH

3. PROVIDE WITH ROOF CAP - SEE ROOF HOOD SCHEDULE

4. PROVIDE WITH ALUMNUM BACKDRAFT DAMPER

5. GALVANIZED METAL DUCT FROM FAN UP TO ROOF CAP. INSULATE DUCT WITH 1" FIBERGLASS WRAP.

ROOF HOOD SCHEDULE										
TAG	AIR DIRECTION	CFM	MAX PRESSURE DROP, "W.G.	THROAT DIMENSIONS	HOOD DIMENSIONS	HEIGHT	MANUFACTURER	MODEL NUMBER	WEIGHT	NOTES
RH-1	EXHAUST	144	0.05	6"x9"	18 3/4"x14 1/4"	6 1/2"	GREENHECK	RJ-6x9	10	1
RH-2	EXHAUST	144	0.05	6"x9"	18 3/4"x14 1/4"	6 1/2"	GREENHECK	RJ-6x9	10	1
NOTE: 1. ANCHOR HOOD TO 12" HIGH ROOF CURB.										



NOTES:  
1. SEE LEGEND AND GENERAL NOTES ON SHEET M-1.  
BAR EQUALS ONE INCH WHEN DRAWING IS PLOTTED FULL SIZE. IF NOT, SCALE ACCORDINGLY



CITY OF COOS BAY

EGYPTIAN THEATRE RESTROOMS

ZC

ZBIDEN • CARTER • SOUTHERS  
ENGINEERS  
950 SW 6th Street - Suite C Grants Pass, OR 97526  
PH: (541) 475-3025

PROJECT NO: 1325  
DRAWN: JJ 1325-M-2.dwg  
CHECKED: D. WEHAGE  
DATE: 7-2-2013

HVAC PLAN & EQUIPMENT SCHEDULES

M-2

7/10/13  
7/1/13

EP  
EP

DATE

REVISIONS

NO

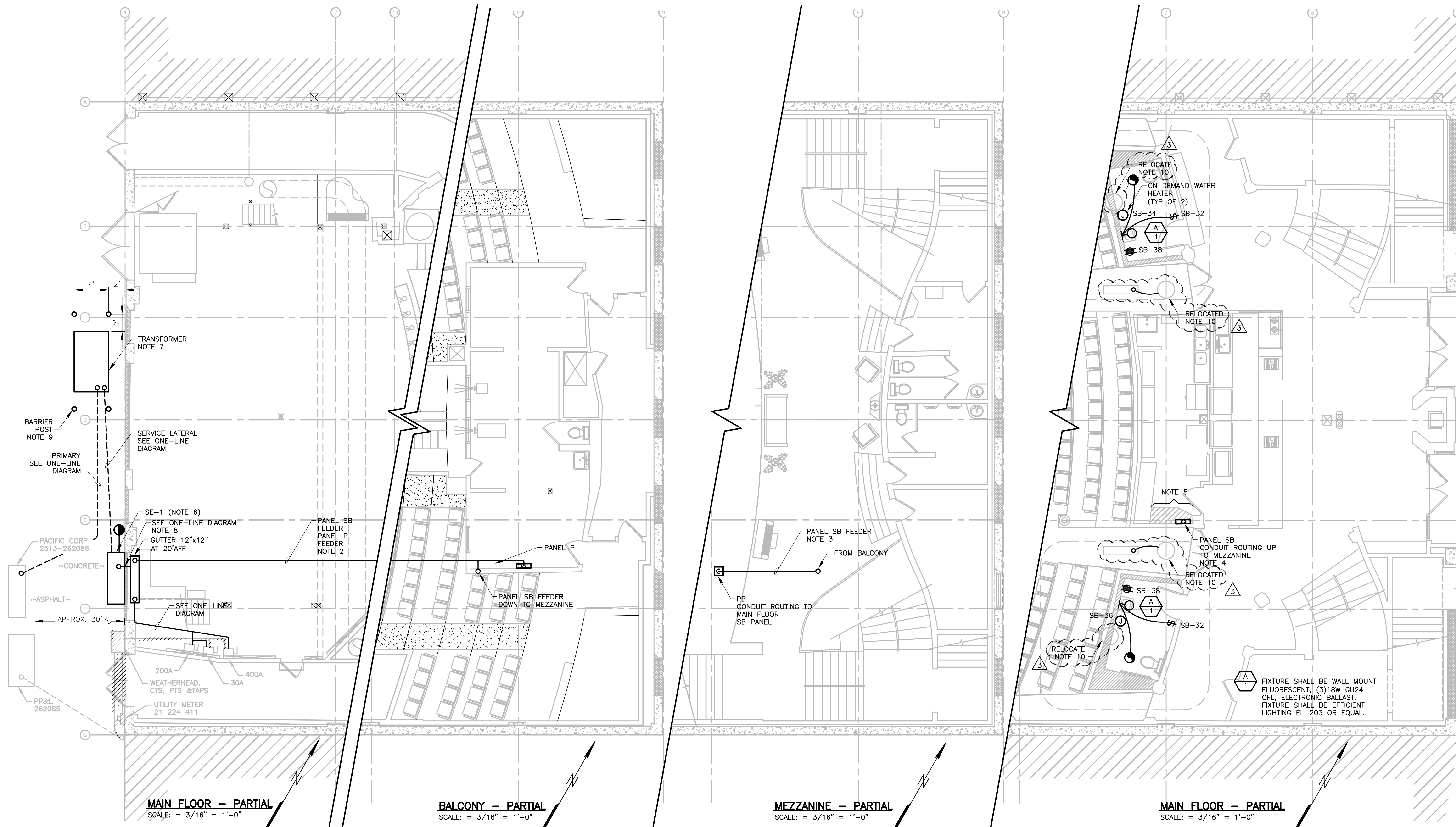
BY



M-3







- NOTES:
1. SEE LEGEND AND GENERAL NOTES ON SHEET E-1.
  2. PANEL SB & P CONDUITS SHALL BE ROUTED IN ATTIC ON CONDUIT TRAPEZE.

3. ROUTE NOTED CONDUIT IN MEZZANINE FRAMING AREA.
4. REMOVE EXISTING PANEL SB AND REPLACE WITH NEW PANEL "SB".
5. REMOVE CABINETRY BELOW PANEL "SB".

6. PROVIDE A HOUSE KEEPING PAD AT SE-1. PAD SHALL BE 4" THICK, WITH A #8 REBAR GRID, 12" MIN ON CENTER, 2 STICKS MINIMUM EACH DIRECTION.

7. COORDINATE WITH THE UTILITY AND INSTALL SE-1, TRANSFORMER VAULT, PRIMARY CONDUIT, AND SERVICE LATERAL CONDUIT PER UTILITY REQUIREMENTS.
8. COORDINATE CORE DRILLING REQUIREMENTS FOR CONDUITS WITH STRUCTURAL ENGINEER.

9. BARRIER POST SHALL BE SIX INCH STEEL POST, GALVANIZED, CONCRETE FILLED. POST SHALL HAVE A DOMED TOP; FREE FROM BURRS AND SHARP EDGES. EACH POST SHALL HAVE A 12 INCH DIAMETER BY 24 INCH DEEP CONCRETE FOOTING.

10. CONTRACTOR SHALL CAREFULLY REMOVE, PRESERVE AND PROTECT THE EXISTING CIRCULAR STYLIZED LIGHT FIXTURE WHICH WILL INTERFERE WITH THE CONSTRUCTION OF THE NEW BATHROOM WALLS. FIXTURES SHALL BE RELOCATED WITH A NEW BRANCH CIRCUIT FROM THE EXISTING 1"x4" FLUORESCENT FIXTURES AS SHOWN ON PLANS.



ADDENDUM NO. 3	7/11/13	EP
REVISED BID SET	7/1/13	EP
UTILITY COORDINATION	6/25/13	EP
NO.	BY	DATE

CITY OF COOS BAY

EGYPTIAN THEATRE RESTROOMS

**ZCS**  
ZBINDER • CARTER • SOUDERS  
ENGINEERS  
550 SW 6th Street - Suite C, Grants Pass, OR 97526  
phone: (541) 873-3865 fax: (541) 478-3870

PROJECT NO: 1325  
DRAWN: NP 1325-E-4.dwg  
CHECKED: D. McHANEY  
DATE: 7-11-2013

REGISTERED PROFESSIONAL ENGINEER  
17,004  
D. McHANEY  
OREGON  
JAN. 18, 1997  
DOUGLAS C. McHANEY

EXPIRATION DATE: 12/31/14

BUILDING POWER PLANS

E-4