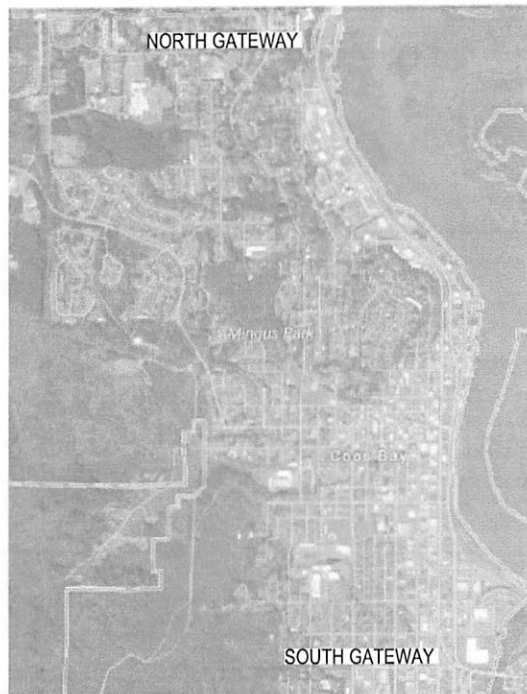


CITY OF COOS BAY GATEWAY IMPROVEMENTS

VICINITY MAP



SUBMITTAL

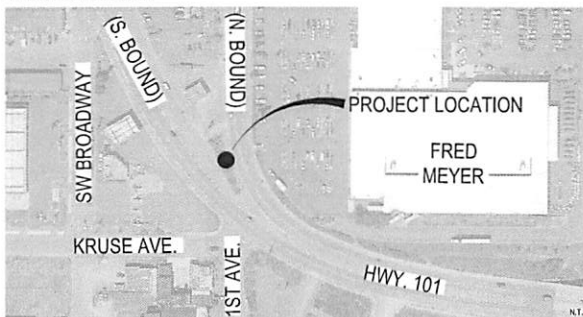
100% CONSTRUCTION DOCUMENTS
DATE: 06-26-2017

AREA MAP

NORTH GATEWAY



SOUTH GATEWAY



PROJECT SITE:

NORTH GATEWAY: NE 1/4 OF THE SE 1/4 SECTION 22 T. 25S. R. 13.W.
W.M., TAX LOT 600 PARCEL 2 (TLID - 25S13W22DATL0060100)

SOUTH GATEWAY: ODOT R.O.W. MEDIAN BETWEEN HWY. 101
NORTHBOUND AND SOUTHBOUND LANES

SHEET INDEX

LANDSCAPE DRAWINGS:

SHEET NO.	SHEET TITLE
NORTH GATEWAY	
G1.0	GENERAL INFORMATION
L1.0	EXISTING CONDITIONS PLAN - NORTH GATEWAY
L2.0	DEMOLITION PLAN - NORTH GATEWAY
L3.0	GRADING PLAN - NORTH GATEWAY
L4.0	LAYOUT & MATERIALS PLAN - NORTH GATEWAY
L5.0	IRRIGATION PLAN - NORTH GATEWAY
L6.0	PLANTING PLAN - NORTH GATEWAY
SOUTH GATEWAY	
G1.0	GENERAL INFORMATION
L7.0	EXISTING CONDITIONS PLAN - SOUTH GATEWAY
L8.0	DEMOLITION PLAN - SOUTH GATEWAY
L9.0	GRADING PLAN - SOUTH GATEWAY
L10.0	LAYOUT & MATERIALS PLAN - SOUTH GATEWAY
L11.0	IRRIGATION PLAN - SOUTH GATEWAY
L12.0	PLANTING PLAN - SOUTH GATEWAY
NORTH & SOUTH GATEWAY	
L13.0	SITE DETAILS
L13.1	SITE DETAILS
L13.2	IRRIGATION DETAILS
L13.3	PLANTING DETAILS



PROJECT DIRECTORY

OWNER/CONTACT

CITY OF COOS BAY
500 CENTRAL AVE.
COOS BAY, OR 97420
PHONE: 541-269-1181
PROJECT CONTACT: RANDY DIXON
PHONE: 503-916-3069
EMAIL: rdixon@coosbay.org

LANDSCAPE ARCHITECT

GREENWORKS, P.C.
24 NW 2ND AVENUE, SUITE 100
PORTLAND, OR 97209
www.greenworkspc.com
PROJECT CONTACT: WES SHOGER
PHONE: 503-222-5612
EMAIL: wess@greenworkspc.com

SURVEYOR

DYER PARTNERSHIP
ENGINEERS AND PLANNERS
1330 TEAKWOOD AVE.
COOS BAY, OR 97420
PHONE: 541-269-0732
WEB: www.dyerpart.com

GENERAL NOTES

1. SURVEY INFORMATION:
NORTH GATEWAY: SURVEY INFORMATION PROVIDED BY DYER PARTNERSHIP. VERTICAL DATUM IS BASED ON 1988 NAVD PER BM W751. RECORD ELEV = 11.43.
SOUTH GATEWAY: BASEMAP FURNISHED BY OREGON DEPARTMENT OF TRANSPORTATION (ODOT). UNDERGROUND, OVERHEAD UTILITIES AND ELEVATION DATA NOT AVAILABLE ON BASEMAP. FIELD VERIFY ALL UTILITIES PRIOR TO CONSTRUCTION.
2. ALL WORK PERFORMED IN CONNECTION WITH THE CONTRACT DOCUMENTS, INCLUDING MATERIALS FURNISHED, WORKMANSHIP, AND MEANS AND METHODS OF CONSTRUCTION SHALL CONFORM TO THE LATEST STANDARDS, PRACTICES AND REQUIREMENTS OF THE APPLICABLE FEDERAL, STATE AND LOCAL AUTHORITIES.
3. IT SHALL BE THE RESPONSIBILITY OF THE CONTRACTOR TO VERIFY ALL UTILITY LOCATIONS, DEPTHS AND ELEVATIONS PRIOR TO CONSTRUCTION AND ARRANGE FOR THE RELOCATION OF ANY IN CONFLICT WITH ALL CONSTRUCTION ACTIVITIES. THE LOCATIONS AND IDENTIFICATION OF UTILITIES WITHIN THIS DOCUMENT IS FOR INFORMATION ONLY AND IS NOT GUARANTEED TO BE ACCURATE. ANY DISCREPANCIES BETWEEN SURVEY INFORMATION AND FIELD CONDITIONS SHALL BE BROUGHT TO THE ATTENTION OF THE OWNER'S REPRESENTATIVE IMMEDIATELY.
4. IT SHALL BE UNDERSTOOD THAT THE IMPROVEMENTS SHOWN IN THE DRAWINGS AND SPECIFICATIONS IS MEANT TO COMPLY WITH ALL APPLICABLE CODES AND ORDINANCES. DESIGN CHANGES, CONFLICTS, OR ISSUES THAT ARISE THAT WOULD CONTRADICT RELEVANT CODES AND ORDINANCES SHALL BE BROUGHT TO THE ATTENTION OF THE OWNER'S REPRESENTATIVE IMMEDIATELY.
5. CONTRACTOR TO COMPLY WITH OREGON LAW REQUIRING ADHERENCE TO THE RULES ADOPTED BY THE OREGON UTILITY NOTIFICATION CENTER. THE CONTRACTOR MUST NOTIFY THE OREGON UTILITY NOTIFICATION CENTER AT LEAST 2 BUSINESS DAYS, BUT NOT MORE THAN 10 BUSINESS DAYS, BEFORE COMMENCING AN EXCAVATION. THOSE RULES ARE SET FORTH IN OAR 952-001-0010 THROUGH OAR 952-001-0090 AND ORS 757.541 TO 757.57. PHONE CONTACT FOR THE OREGON UTILITY NOTIFICATION CENTER IS 503-232-1987.
6. CONTRACTOR TO REPAIR AT OWN EXPENSE FOR ANY DAMAGE DONE TO UTILITY SYSTEMS, SURFACE PAVEMENTS, SITE FEATURES, AND STRUCTURES, WHETHER INSIDE OR OUTSIDE OF THE PROJECT LIMITS, THAT ARE NOT DIRECTLY INDICATED TO BE REMOVED OR RELOCATED AS PART OF THE PROJECT CONSTRUCTION.
7. CONTRACTOR SHALL BE RESPONSIBLE FOR ALL QUANTITIES SHOWN IN THE DRAWINGS OR SPECIFICATIONS. ANY QUANTITIES PROVIDED ARE FOR CONVENIENCE ONLY. OWNER'S REPRESENTATIVE TO BE NOTIFIED IMMEDIATELY OF ANY DISCREPANCIES.
8. UPON PROJECT COMPLETION, THE PROJECT AREA AND ADJACENT SPACES SHALL BE FREE AND CLEAR OF ALL CONSTRUCTION MATERIALS, WASTE AND DEBRIS. CONTRACTOR TO REMOVE AND PROPERLY DISPOSE OF ALL MATERIALS AS INDICATED IN THE PROJECT CONTRACT DOCUMENTS AND MUST MEET ALL APPLICABLE REGULATIONS OVERSEEING WASTE DISPOSAL.

SYMBOLS LEGEND

DETAIL REFERENCE NUMBER 	DETAIL BUBBLE DIAGRAM
SHEET NUMBER 	LEADER LABEL
KEYNOTE 	KEYNOTE
DETAIL REFERENCE 	DETAIL REFERENCE
ELEVATION DETAIL REFERENCE 	ELEVATION DETAIL REFERENCE
SECTION DETAIL REFERENCE 	SECTION DETAIL REFERENCE
ENLARGEMENT REFERENCE 	ENLARGEMENT REFERENCE
SCALE: 1/4" = 1'-0" 	SCALE BAR
NORTH ARROW 	NORTH ARROW
REVISION TRIANGLE 	REVISION TRIANGLE
REVISION CLOUD 	REVISION CLOUD
LIMIT OF WORK 	PROJECT LIMIT OF WORK

TABLE OF ABBREVIATIONS

NOTE: NOT ALL ABBREVIATIONS REFERENCED IN DRAWINGS. ABBREVIATIONS MAY BE SHOWN WITH OR WITHOUT PERIODS.

AT	ALUMINUM	LF	LINEAR FEET
ALUM	ALUMINUM	LP	LOW POINT
APPROX	APPROXIMATE	MAX	MAXIMUM
ARCH	ARCHITECT	MIN	MINIMUM
AC	ASPHALT CONCRETE	MH	MANHOLE
BC	BOTTOM OF CURB	NIC	NOT IN CONTRACT
B&B	BALLED AND BURLAP	NTS	NOT TO SCALE
BLDG	BUILDING	OH	OVER HEAD
BM	BENCHMARK	OC	ON CENTER
BS	BOTTOM OF STAR	OD	OUTSIDE DIAMETER
BR	BOTTOM OF RAMP	OF CI	OWNER FURNISHED CONTRACTOR INSTALLED
BOW	BOTTOM OF WALL (ELEV. BELOW FINISH GRADE)	PA	PLANTING AREA
BW	BOTTOM OF WALL (ELEV. AT FINISH GRADE)	PC	POINT OF CURVATURE
CB	CATCH BASIN	PCG	POINT OF COMPOUND CURVATURE
CF	CUBIC FEET	PI	POINT OF INTERSECTION
CAL	CALIPER	PIP	POURED-IN-PLACE
CJ	CONTROL JOINT	PL	PLATE
CLR	CLEAR	PLS	PURE LIVE SEED
CIP	CAST-IN-PLACE	POT	POINT OF TANGENCY
CONT	CONTAINER	PT	PRESSURE TREATED
CP	CENTER POINT	PERF	PERFORATED
CT	CURRENT TRANSFORMER	PP	POWER POLE
DM	DIMENSION	PVC	POLYVINYL CHLORIDE PIPE
DIA	DIAMETER	R	RADIUS
DEMO	DEMOLISH	REF	REFERENCE
DOM	DOMESTIC WATER LINE	REINF	REINFORCED / REINFORCEMENT
(E)	EXISTING	RECD	REQUIRED
EA	EACH	ROW	RIGHT-OF-WAY
EJ	EXPANSION JOINT	SAN	SANITARY
ELC	EXTERIOR LIGHTING CONTROL	SD	STORM DRAIN
ELEV	ELEVATION	SEC	SECONDARY
ENG	ENGINEER	SM	SIMILAR
EOP	EDGE OF PAVEMENT	SS	STAINLESS STEEL
EQ	EQUAL	STA	STATION
EST	ESTIMATE	STD	STANDARD
FB	FLAT BAR	STR	STRUCTURAL
FD	FIELD DRAIN	TD	TRENCH DRAIN
FG	FINISH GRADE	TEL	TELEPHONE
FL	FLOW LINE	TOPO	TOPOGRAPHY
FOC	FACE OF CURB	TC	TOP OF CURB
FTG	FOOTING	TR	TOP OF RAMP
GALV	GALVANIZED	TS	TOP OF STAIR
GA	GAUGE	TYP	TYPICAL
GFI	GROUND FAULT INTERRUPTER	TW	TOP OF WALL
GB	GROUND BREAK	UG	UNDERGROUND
GRD	GROUND	VAR	VARIABLES
HGZ	HOT DIP GALVANIZED	VOL	VOLUME
HORIZ	HORIZONTAL	W	WITH
HP	HIGH POINT	W/O	WITHOUT
HSS	HOLLOW STRUCTURAL SECTION	WM	WATER METER
ID	INSIDE DIAMETER	WP	WEATHER PROOF
IE	INVERT ELEVATION	WT	WEIGHT
JT	JOINT	WWM	WELDED WIRE MESH
		YD	YARD

DETAIL FRAME LEGEND

TITLE DESCRIPTION	TITLE	SCALE NOTATION
DETAIL REFERENCE NUMBER	#	SCALE: 1/4" = 1'-0"
DRAWING TYPE	PLAN SECTION ELEVATION	SCALE BAR

GENERAL LEGEND

EXISTING	SITE PROPERTY LINE
MAJOR CONTOUR	MAJOR CONTOUR
MINOR CONTOUR	MINOR CONTOUR
TOE OF SLOPE	TOE OF SLOPE
CHAINLINK FENCE	CHAINLINK FENCE
WATER LINE	WATER LINE
WATER METER	WATER METER
WATER VALVE	WATER VALVE
UTILITY POLE	UTILITY POLE
BURIED ELECTRICAL LINE	BURIED ELECTRICAL LINE
TRAFFIC SIGN AND POLE	TRAFFIC SIGN AND POLE
COOS BAY WELCOME SIGN	COOS BAY WELCOME SIGN
PROPOSED	RELOCATED UTILITY POLE (LOCATION SHOWN DIAGRAMMATICALLY)
TRAFFIC SIGN AND POLE (LOCATION SHOWN DIAGRAMMATICALLY)	TRAFFIC SIGN AND POLE (LOCATION SHOWN DIAGRAMMATICALLY)



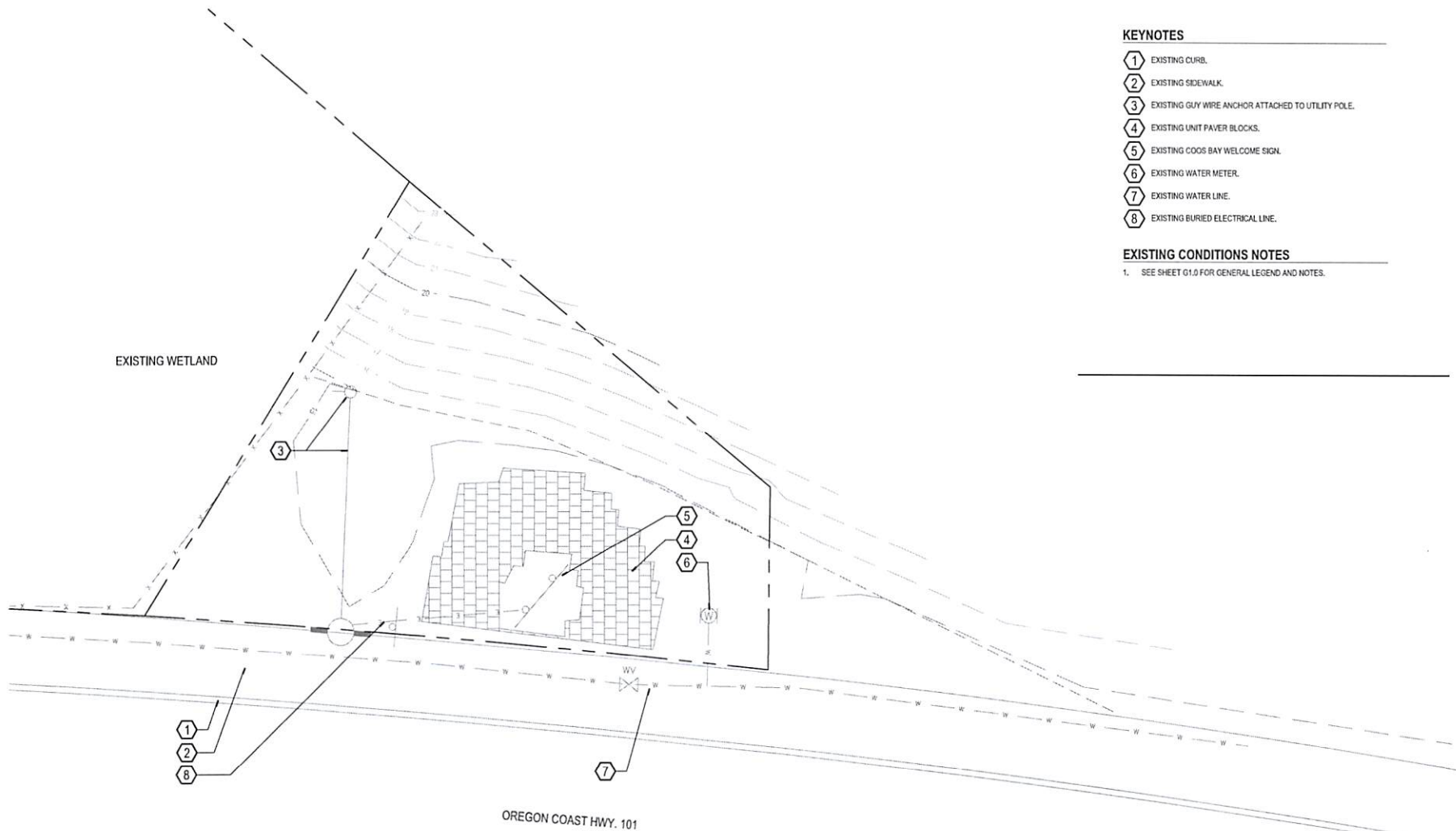
GreenWorks, P.C.
Landscape Architecture
34 NW 3rd Avenue, Suite 100
Portland, Oregon 97208
Phone: 503.277.0000
Email: info@greenworks-pc.com



Project: Coos Bay Gateway Improvements
City of Coos Bay
Coos Bay, OR 97420
Submitted: 06/26/2017
Sheet Title: General Information

100% CDs
Submitted: 06/26/2017
Sheet Title: General Information
Date: 06/26/2017
Revisions:
Drawn By: WS
Checked By: DW
Job No: 116/56.1
Approved: MF

G1.0
Sheet No. 1 of 17



KEYNOTES

- 1 EXISTING CURB.
- 2 EXISTING SIDEWALK.
- 3 EXISTING GUY WIRE ANCHOR ATTACHED TO UTILITY POLE.
- 4 EXISTING UNIT PAVEMENT BLOCKS.
- 5 EXISTING COOS BAY WELCOME SIGN.
- 6 EXISTING WATER METER.
- 7 EXISTING WATER LINE.
- 8 EXISTING BURIED ELECTRICAL LINE.

EXISTING CONDITIONS NOTES

1. SEE SHEET 01.0 FOR GENERAL LEGEND AND NOTES.

GREENWORKS

GreenWorks, P.C.
Landscape Architecture
3100 SW 2nd Avenue, Suite 100
Portland, Oregon 97201
Phone: (503) 227-1234
Fax: (503) 227-1235
Email: info@greenworks-pc.com

REGISTERED
LANDSCAPE ARCHITECT
MICHAEL F. FARR
1971 LICENSE
OREGON



Project: Coos Bay Gateway Improvements
City of Coos Bay
500 North Avenue
Coos Bay, OR 97420
Contact: Randy Olson, r.olson@coosbay.org

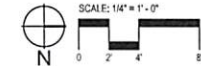
Submitted: 100% CD's
Sheet Title: Existing Conditions Plan - North Gateway

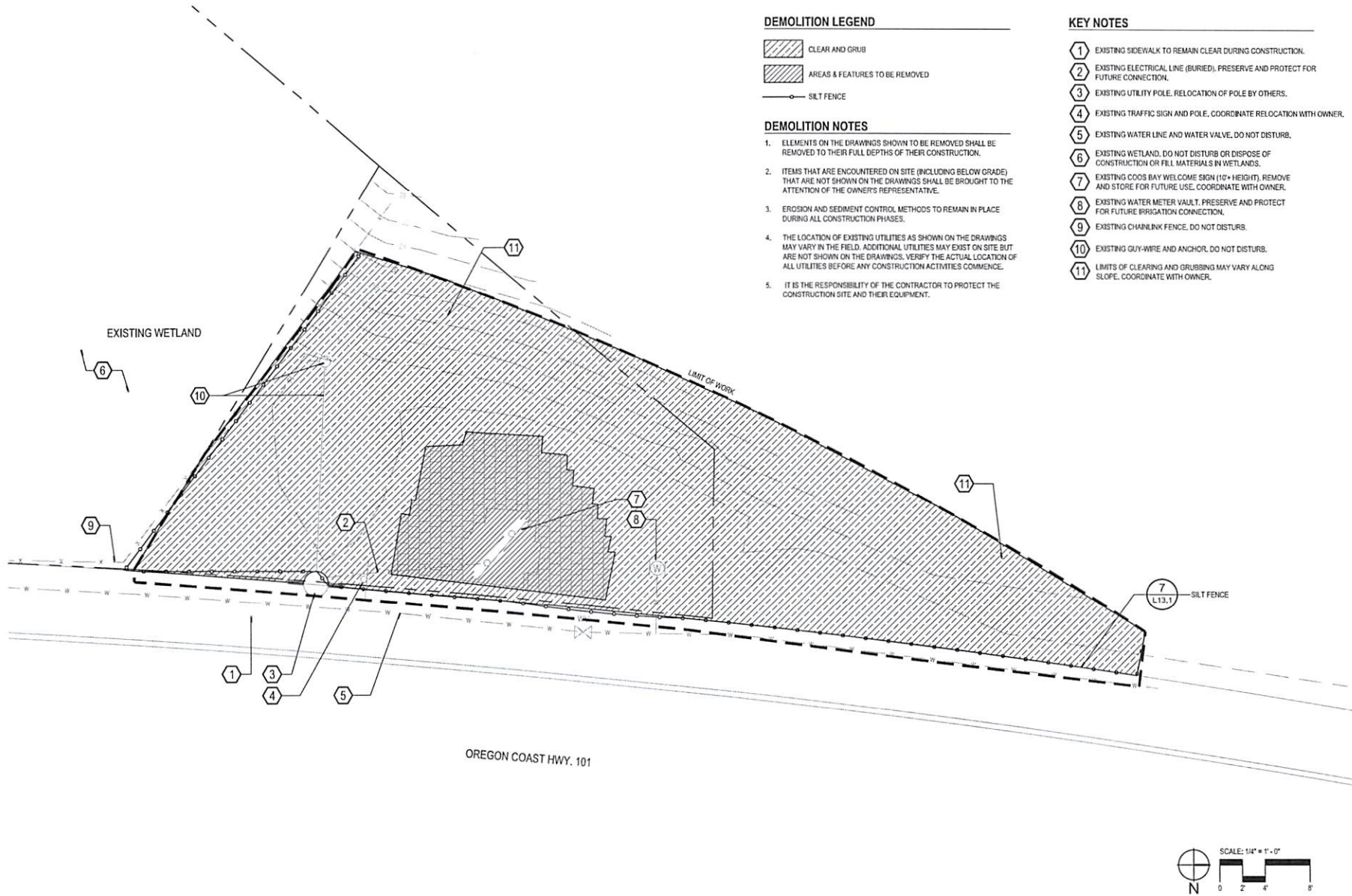
Date: 06/26/2017
Revisions:

Drawn By: WES
Checked By: RAT
Job No.: 116056.1
Approved: MF

L1.0

Sheet No. 2 of 17





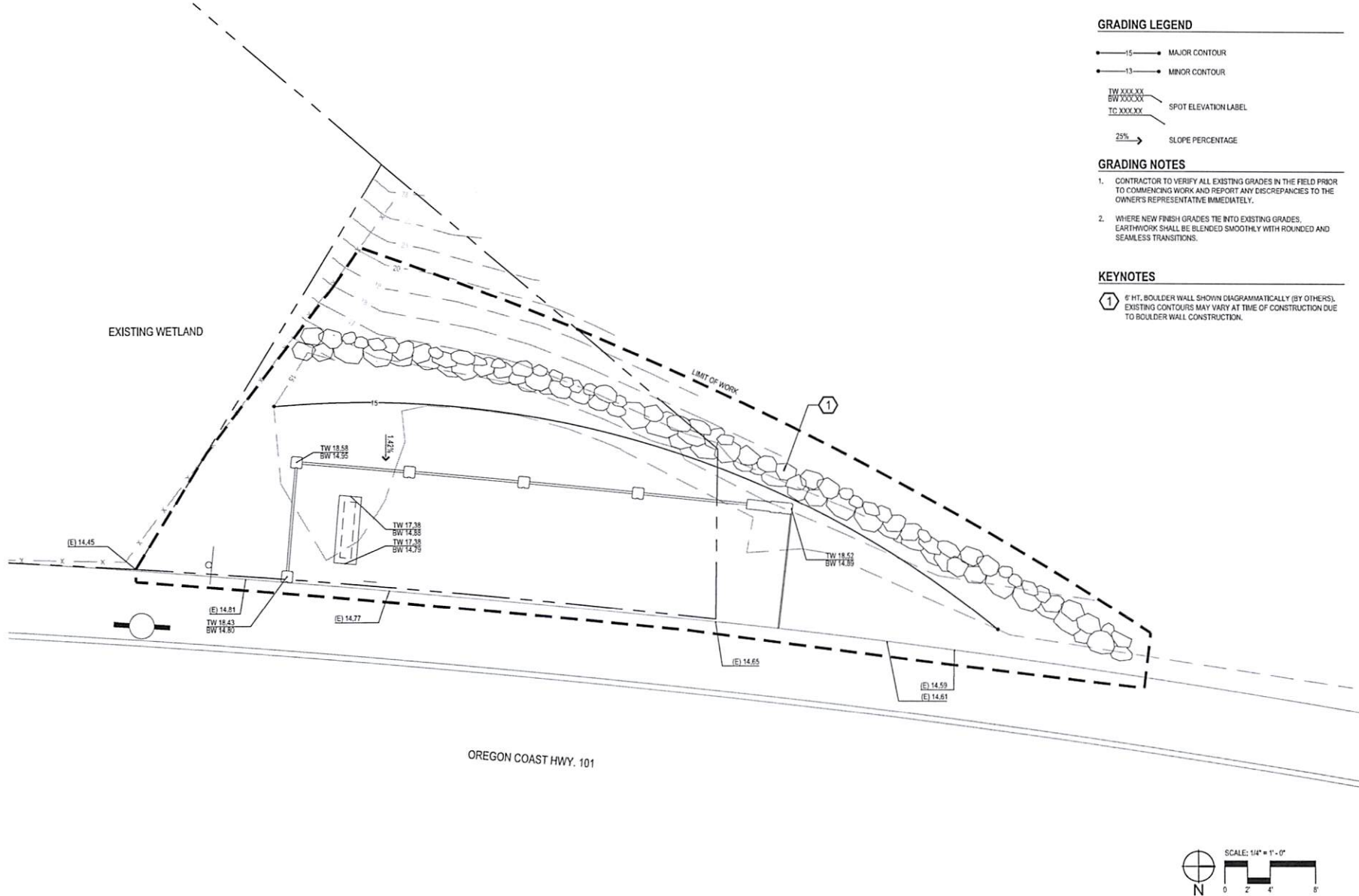
Project: **Coos Bay Gateway Improvements**
City of Coos Bay
500 Central Avenue
Astoria, OR 97103
Contact: Randy Olson, rfoley@goodbay.org

Scale: 100% CDs
Sheet Title: **Demolition Plan - North Gateway**

Date: 06/26/2017
Revisions:

Drawn By: WJS
Checked By: DW
Job No.: 116056.1
Approved: MF

L2.0
Sheet No. 3 of 17



GRADING LEGEND

- 15— MAJOR CONTOUR
- 13— MINOR CONTOUR
- TW XXX.XX
BW XXX.XX SPOT ELEVATION LABEL
- 25% SLOPE PERCENTAGE

GRADING NOTES

- CONTRACTOR TO VERIFY ALL EXISTING GRADES IN THE FIELD PRIOR TO COMMENCING WORK AND REPORT ANY DISCREPANCIES TO THE OWNER'S REPRESENTATIVE IMMEDIATELY.
- WHERE NEW FINISH GRADES TIE INTO EXISTING GRADES, EARTHWORK SHALL BE BLENDED SMOOTHLY WITH ROUNDED AND SEAMLESS TRANSITIONS.

KEYNOTES

- 6' HT. BOULDER WALL SHOWN DIAGRAMMATICALLY (BY OTHERS). EXISTING CONTOURS MAY VARY AT TIME OF CONSTRUCTION DUE TO BOULDER WALL CONSTRUCTION.

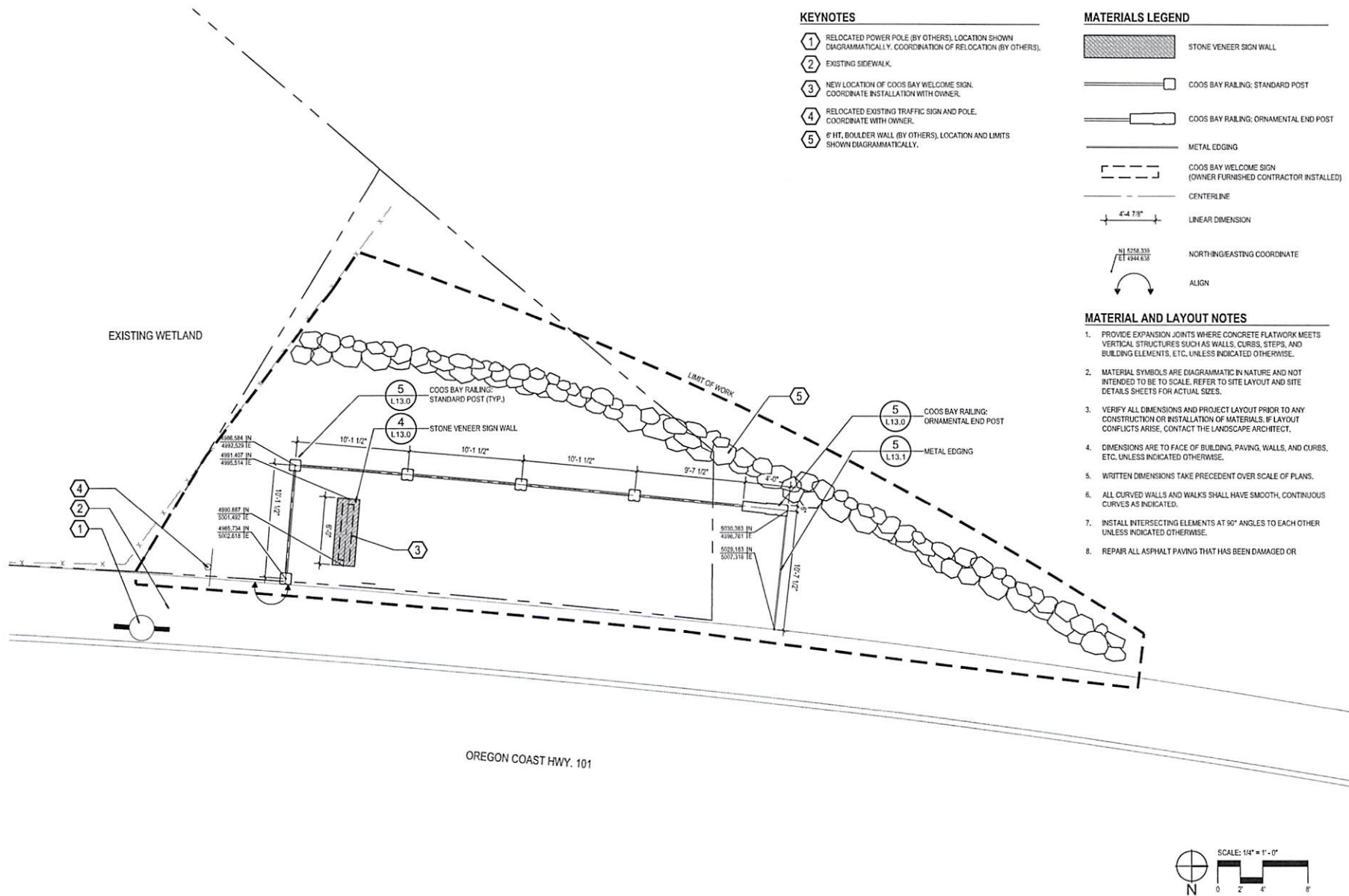


Project: Coos Bay Gateway Improvements
City of Coos Bay
500 Central Avenue
Astoria, OR 97103
44-359-1111
Contact: Nancy Doney, office@coosbay.org

Submitted: 100% CD's
Sheet Title: Grading Plan - North Gateway
Date: 06/26/2017
Revisions:

Drawn By: WS
Checked By: DW
Job No.: 116056.1
Approved: MF

L3.0
Sheet No. 4 of 17



GREENWORKS

GreenWorks, P.C.
Landscape Architecture
Environmental Design
2000 1st Avenue, Suite 100
Coos Bay, Oregon 97331
Phone: (541) 338-1100
Fax: (541) 338-1101
Email: info@greenworks.org

REGISTERED
LANDSCAPE ARCHITECT
MICHAEL F. FARR
P. MICHAEL FARR
07131000



Project: Coos Bay Gateway Improvements
City of Coos Bay
500 1st Avenue
Coos Bay, OR 97331
Contact: Randy Olson, r Olson@coosbay.org

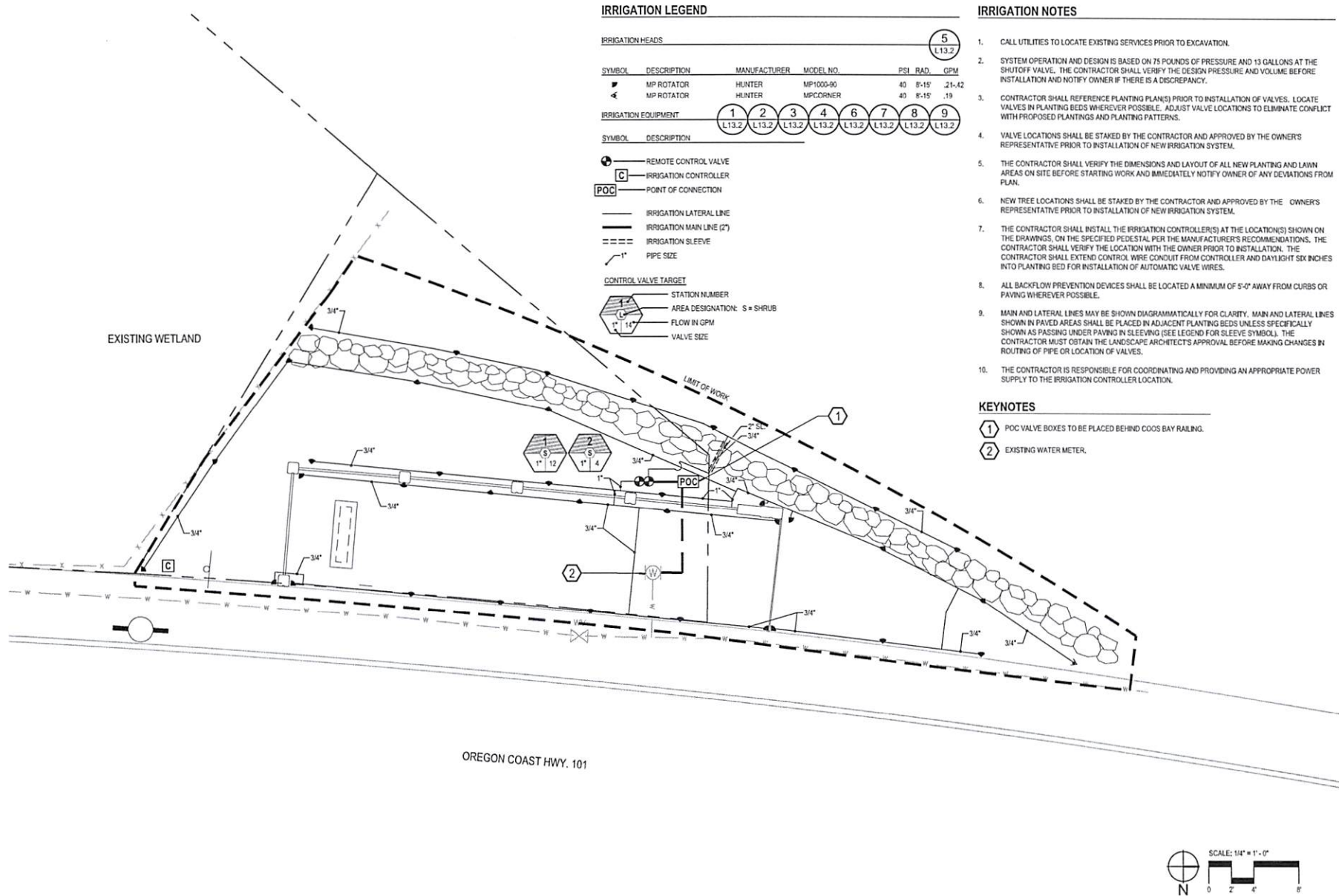
Submitted: 100% CDs
Sheet Title: Layout & Materials Plan - North Gateway

Date: 06/26/2017
Revisions:

Drawn By: WS
Checked By: DW
Job No.: 116056.1
Approved: MF

L4.0

Sheet No. 5 of 17



GreenWorks, P.C.
Landscape Architecture
Environmental Design
1100 1st Avenue, Suite 100
Portland, Oregon 97202
Phone: 503.224.7777
Fax: 503.224.7777
Email: info@greenworks-pc.com



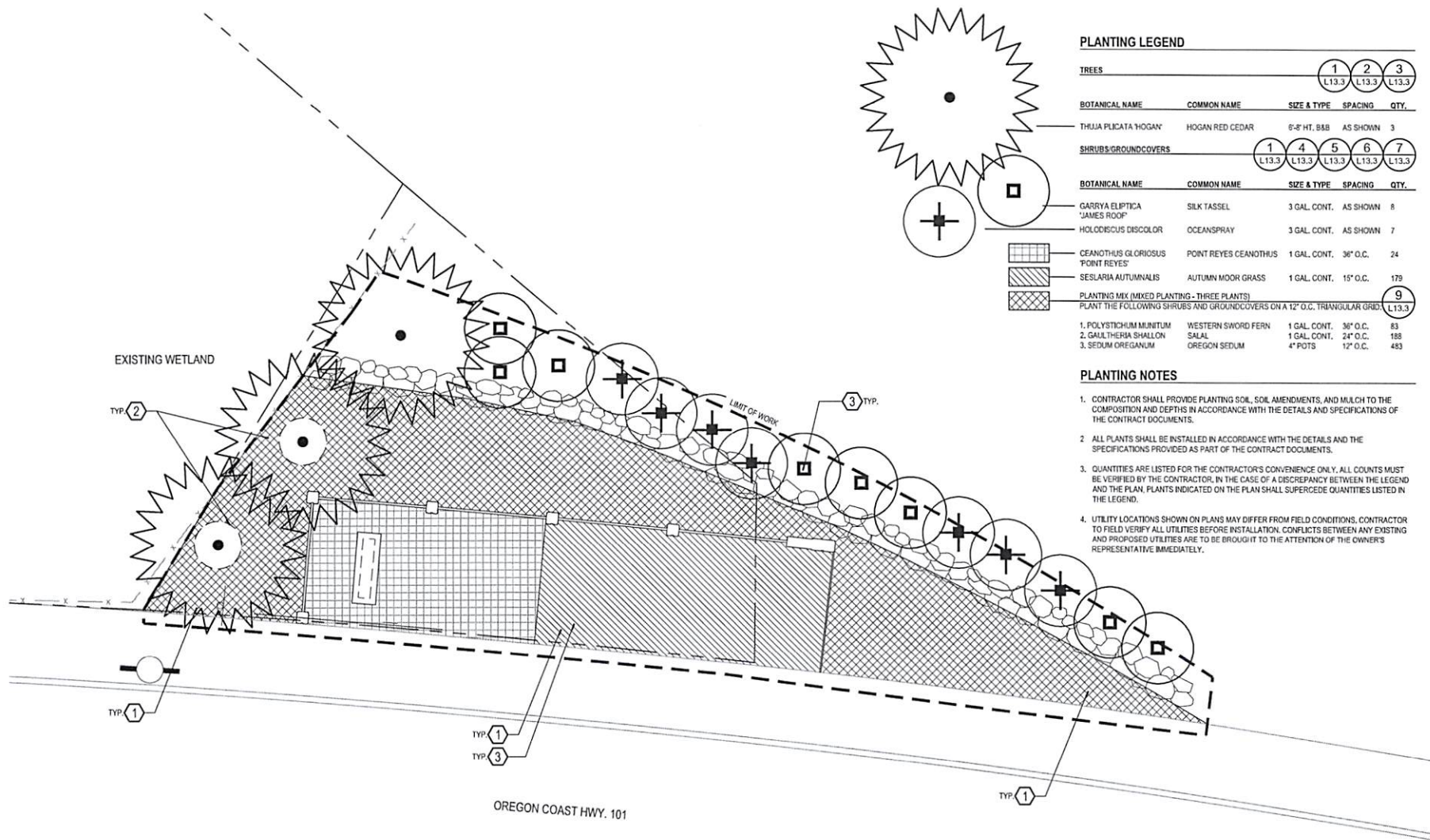
Project: Coos Bay Gateway Improvements
City of Coos Bay
500 Commercial Avenue
Coos Bay, OR 97331
Contact: Randy Olsen, r.olsen@coosbay.org

Submitted: 100% CDs
Sheet Title: Irrigation Plan - North Gateway
Date: 06/26/2017
Revisions:

Drawn By: WS
Checked By: DW
Job No. 116056.1
Approved: MF

L5.0

Sheet No. 6 of 17



PLANTING LEGEND

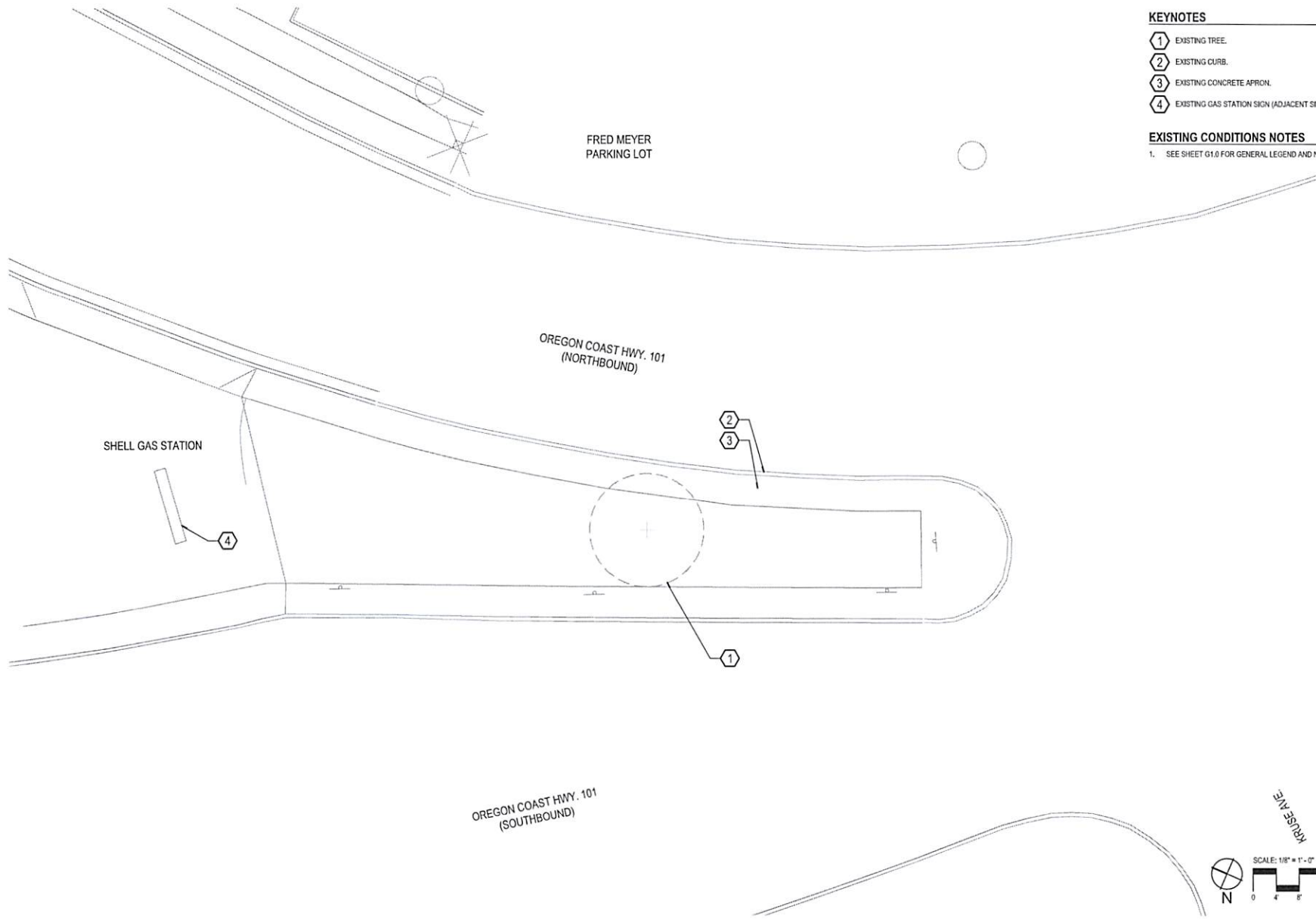
TREES		1	2	3
		L13.3	L13.3	L13.3
BOTANICAL NAME	COMMON NAME	SIZE & TYPE	SPACING	QTY.
THUJA PLICATA 'HOGAN'	HOGAN RED CEDAR	5'-8" HT. B&B	AS SHOWN	3
SHRUBS/GROUNDCOVERS		1	4	5
		L13.3	L13.3	L13.3
BOTANICAL NAME	COMMON NAME	SIZE & TYPE	SPACING	QTY.
GARRYA ELIPTICA 'JAMES ROOF'	SILK TASSEL	3 GAL. CONT.	AS SHOWN	8
HOLODISCUS DISCOLOR	OCEANSPRAY	3 GAL. CONT.	AS SHOWN	7
CEANOTHUS GLORIOSUS 'POINT REYES'	POINT REYES CEANOTHUS	1 GAL. CONT.	36" O.C.	24
SESLERIA AUTUMNALIS	AUTUMN MOOR GRASS	1 GAL. CONT.	15" O.C.	179
PLANTING MIX (MIXED PLANTING - THREE PLANTS)				9
				L13.3
1. POLYSTICHUM MUNITUM	WESTERN SWORD FERN	1 GAL. CONT.	36" O.C.	83
2. GAULTHERIA SHALLON	SALAL	1 GAL. CONT.	24" O.C.	188
3. SEDUM OREGANUM	OREGON SEDUM	4" POTS	12" O.C.	483

PLANTING NOTES

- CONTRACTOR SHALL PROVIDE PLANTING SOIL, SOIL AMENDMENTS, AND MULCH TO THE COMPOSITION AND DEPTHS IN ACCORDANCE WITH THE DETAILS AND SPECIFICATIONS OF THE CONTRACT DOCUMENTS.
- ALL PLANTS SHALL BE INSTALLED IN ACCORDANCE WITH THE DETAILS AND THE SPECIFICATIONS PROVIDED AS PART OF THE CONTRACT DOCUMENTS.
- QUANTITIES ARE LISTED FOR THE CONTRACTOR'S CONVENIENCE ONLY. ALL COUNTS MUST BE VERIFIED BY THE CONTRACTOR. IN THE CASE OF A DISCREPANCY BETWEEN THE LEGEND AND THE PLAN, PLANTS INDICATED ON THE PLAN SHALL SUPERCEDE QUANTITIES LISTED IN THE LEGEND.
- UTILITY LOCATIONS SHOWN ON PLANS MAY DIFFER FROM FIELD CONDITIONS. CONTRACTOR TO FIELD VERIFY ALL UTILITIES BEFORE INSTALLATION. CONFLICTS BETWEEN ANY EXISTING AND PROPOSED UTILITIES ARE TO BE BROUGHT TO THE ATTENTION OF THE OWNER'S REPRESENTATIVE IMMEDIATELY.

KEYNOTES

- SHRUBS AND GROUNDCOVERS TO BE SPACED 6" ONE-HALF SPECIFIED ON-CENTER SPACING (O.C.) WHEN ADJACENT TO PAVED AREAS.
- PROVIDE A 5' DIAMETER BARK MULCH RING (2" DEPTH) FOR NEW TREES.
- PROVIDE 12" DEPTH OF PLANTING SOIL TO ALL PLANTING AREAS.



KEYNOTES

- 1 EXISTING TREE.
- 2 EXISTING CURB.
- 3 EXISTING CONCRETE APRON.
- 4 EXISTING GAS STATION SIGN (ADJACENT SITE).

EXISTING CONDITIONS NOTES

1. SEE SHEET G1.0 FOR GENERAL LEGEND AND NOTES.



GreenWorks, P.C.
Landscape Architecture
Environmental Design
1000 3rd Avenue, Suite 100
Portland, Oregon 97208
Phone: 503.227.5555
Fax: 503.227.5555



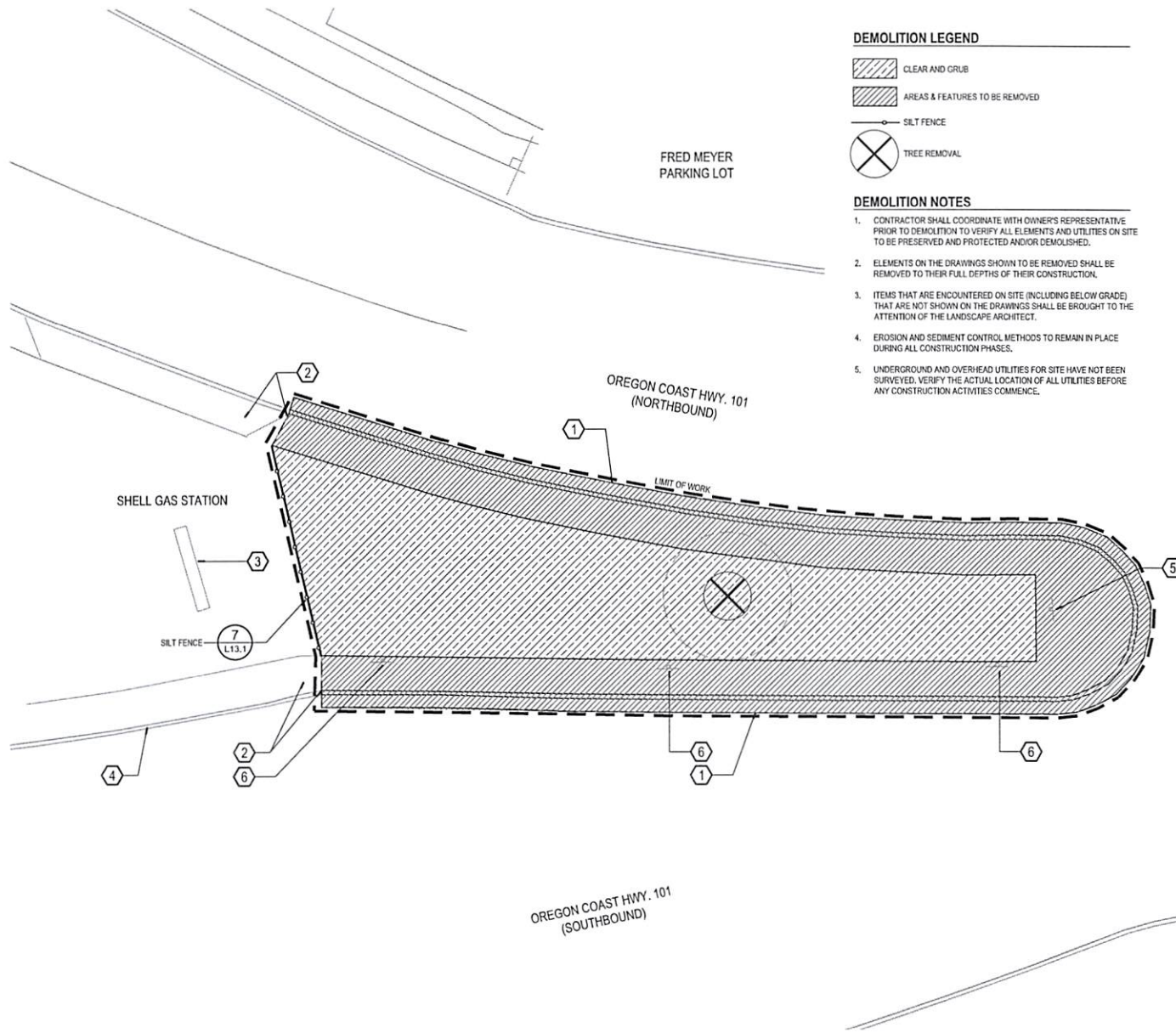
Project: Coos Bay Gateway Improvements
City of Coos Bay
500 Commercial Avenue
Coos Bay, OR 97420
Contact: Randy Olson, rfo@coosbay.org

Submitted: 100% CDs
Sheet Title: Existing Conditions Plan - South Gateway

Date: 06/29/2017
Revisions:

Drawn By: WS
Checked By: DW
Job No.: 116056.1
Approved: MF

L7.0
Sheet No. 8 of 17



DEMOLITION LEGEND

- CLEAR AND GRUB
- AREAS & FEATURES TO BE REMOVED
- SILT FENCE
- TREE REMOVAL

DEMOLITION NOTES

1. CONTRACTOR SHALL COORDINATE WITH OWNER'S REPRESENTATIVE PRIOR TO DEMOLITION TO VERIFY ALL ELEMENTS AND UTILITIES ON SITE TO BE PRESERVED AND PROTECTED AND/OR DEMOLISHED.
2. ELEMENTS ON THE DRAWINGS SHOWN TO BE REMOVED SHALL BE REMOVED TO THEIR FULL DEPTHS OF THEIR CONSTRUCTION.
3. ITEMS THAT ARE ENCOUNTERED ON SITE (INCLUDING BELOW GRADE) THAT ARE NOT SHOWN ON THE DRAWINGS SHALL BE BROUGHT TO THE ATTENTION OF THE LANDSCAPE ARCHITECT.
4. EROSION AND SEDIMENT CONTROL METHODS TO REMAIN IN PLACE DURING ALL CONSTRUCTION PHASES.
5. UNDERGROUND AND OVERHEAD UTILITIES FOR SITE HAVE NOT BEEN SURVEYED. VERIFY THE ACTUAL LOCATION OF ALL UTILITIES BEFORE ANY CONSTRUCTION ACTIVITIES COMMENCE.

KEY NOTES

- ① 2' WIDE ± SAWCUT LINE INTO ADJACENT ASPHALT. COORDINATE TRAFFIC CONTROL WITH CITY OF COOS BAY AND ODOT.
- ② EXISTING DRIVEWAY. DO NOT DISTURB CONCRETE OR BASE COURSE IN DEMOLITION ACTIVITIES. REMOVE CURB AND SIDEWALK APRON UP TO TOP OF EXISTING DRIVEWAY RAMP WING.
- ③ EXISTING SHELL SIGN. DO NOT DISTURB.
- ④ EXISTING CURB. DO NOT DISTURB.
- ⑤ EXISTING TRAFFIC SIGN. COORDINATE WITH CITY OF COOS BAY AND ODOT FOR TEMPORARY REMOVAL PROCEDURE.
- ⑥ EXISTING 'NO PARKING' SIGN. COORDINATE WITH CITY OF COOS BAY AND ODOT FOR TEMPORARY REMOVAL PROCEDURE.



GreenWorks, P.C.
Landscape Architecture
Environmental Consulting
2000 1st Avenue, Suite 100
Medford, Oregon 97504
Phone: (531) 755-1234
Fax: (531) 755-1235
Email: info@greenworks.com



Project: Coos Bay Gateway Improvements
City of Coos Bay
500 Central Avenue
Medford, Oregon 97504
Contact: Randy Olson, r.olson@coosbay.org

Submitted: 100% CDs
Sheet Title: Demolition Plan - South Gateway

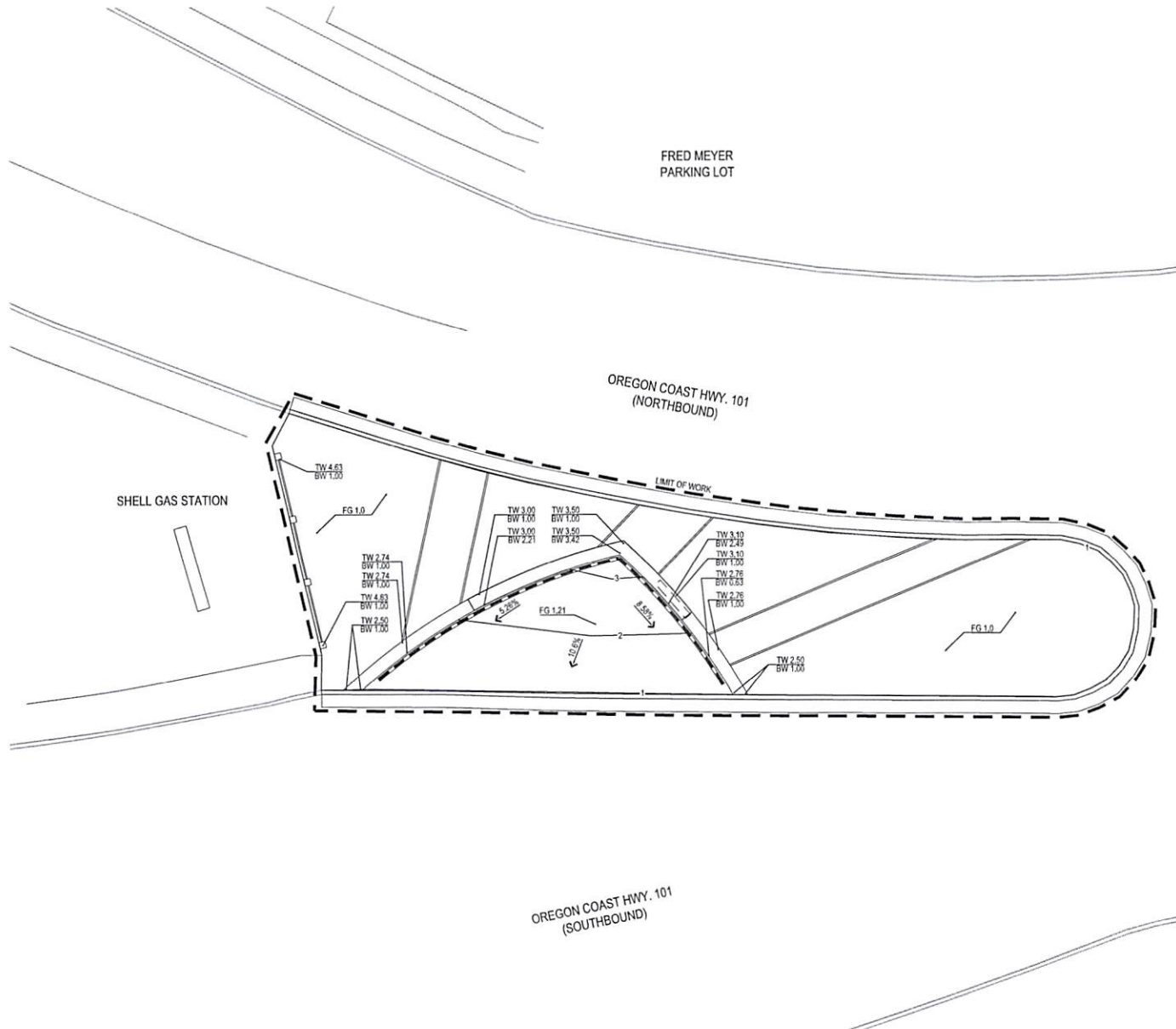
Date: 06/26/2017
Revisions:

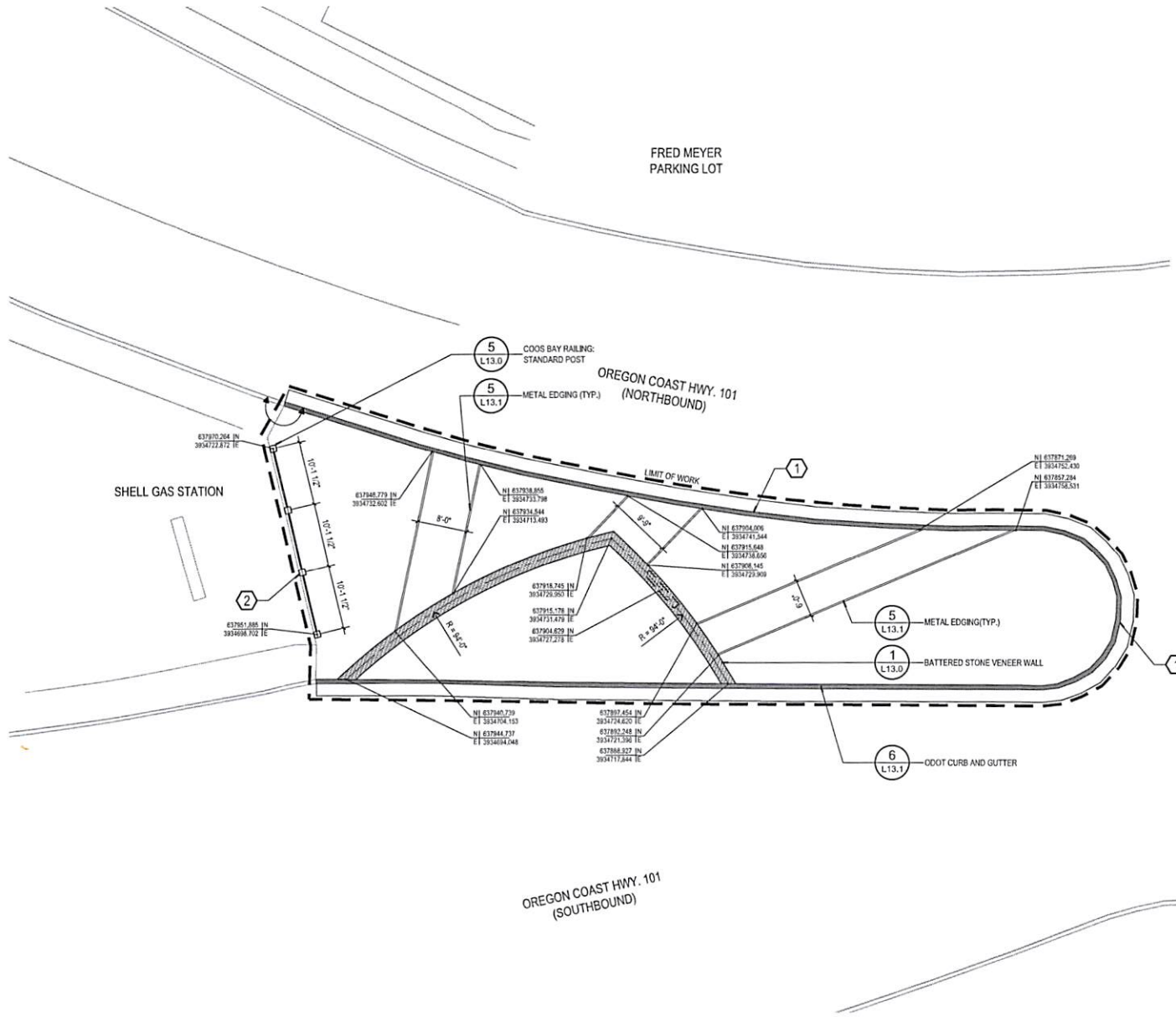
Drawn By: WS
Checked By: DW
Job No.: 116056.1
Approved: MF

L8.0

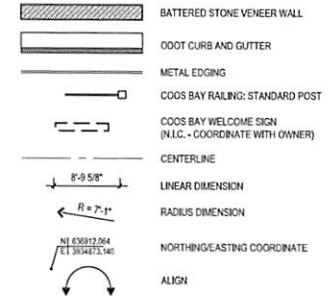
Sheet No. 9 of 17







MATERIALS LEGEND



MATERIAL AND LAYOUT NOTES

1. PROVIDE EXPANSION JOINTS WHERE CONCRETE FLATWORK MEETS VERTICAL STRUCTURES SUCH AS WALLS, CURBS, STEPS, AND BUILDING ELEMENTS, ETC. UNLESS INDICATED OTHERWISE.
2. MATERIAL SYMBOLS ARE DIAGRAMMATIC IN NATURE AND NOT INTENDED TO BE TO SCALE. REFER TO SITE LAYOUT AND SITE DETAILS SHEETS FOR ACTUAL SIZES.
3. VERIFY ALL DIMENSIONS AND PROJECT LAYOUT PRIOR TO ANY CONSTRUCTION OR INSTALLATION OF MATERIALS. IF LAYOUT CONFLICTS ARISE, CONTACT THE LANDSCAPE ARCHITECT.
4. DIMENSIONS ARE TO FACE OF BUILDING, PAVING, WALLS, AND CURBS, ETC. UNLESS INDICATED OTHERWISE.
5. WRITTEN DIMENSIONS TAKE PRECEDENCE OVER SCALE OF PLANS.
6. ALL CURVED WALLS AND WALKS SHALL HAVE SMOOTH, CONTINUOUS CURVES AS INDICATED.
7. INSTALL INTERSECTING ELEMENTS AT 90° ANGLES TO EACH OTHER UNLESS INDICATED OTHERWISE.

KEY NOTES

1. ODOT CURB AND GUTTER TO MATCH EXISTING CURB DIMENSIONS AND EXTENTS.
2. COOS BAY RAILING TO BE SET ALONG EXISTING EDGE OF ADJACENT PAVING. DO NOT DISTURB OR UNDERMINE PAVING OR BASE.



GreenWorks, P.C.
Landscape Architecture
Environmental Design
34 00 2nd Avenue, Suite 100
Portland, Oregon 97214
Phone: 503.277.0770
Fax: 503.277.0770
Email: info@greenworks-pc.com



Coos Bay Gateway Improvements
City of Coos Bay
500 County Avenue
Coos Bay, OR 97331
Contact: Randy Olson, r.olson@coosbay.gov

Layout & Materials Plan
South Gateway

Project: 100% CDs

Submitted: 06/26/2017

Sheet Title:

Date: 06/26/2017

Revisions:

Drawn By: WS

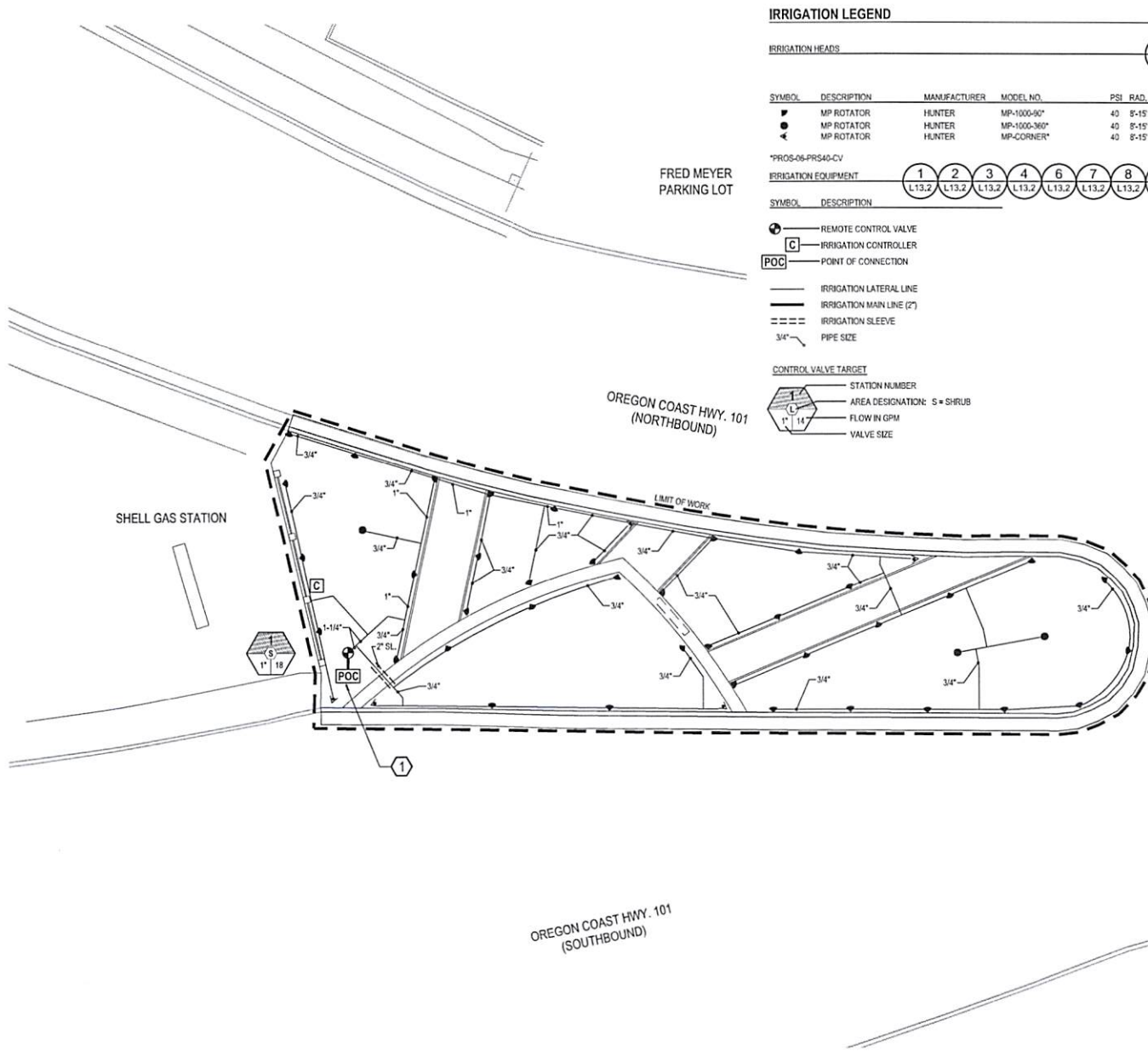
Checked By: DW

Job No. 116056.1

Approved: MF

L10.0

Sheet No. 11 of 17



IRRIGATION LEGEND

IRRIGATION HEADS

SYMBOL	DESCRIPTION	MANUFACTURER	MODEL NO.	PSI	RAD.	GPM
●	MP ROTATOR	HUNTER	MP-1000-90°	40	8'-15'	21-42
●	MP ROTATOR	HUNTER	MP-1000-360°	40	8'-15'	84
●	MP ROTATOR	HUNTER	MP-CORNER*	40	8'-15'	19

*PROS-06-PR540-CV

IRRIGATION EQUIPMENT

SYMBOL DESCRIPTION

- REMOTE CONTROL VALVE
- [C] IRRIGATION CONTROLLER
- [POC] POINT OF CONNECTION

- IRRIGATION LATERAL LINE
- IRRIGATION MAIN LINE (2")
- IRRIGATION SLEEVE
- 3/4" PIPE SIZE

CONTROL VALVE TARGET

- 1 STATION NUMBER
- S AREA DESIGNATION: S = SHRUB
- 14 FLOW IN GPM
- 1 VALVE SIZE

IRRIGATION NOTES

- CALL UTILITIES TO LOCATE EXISTING SERVICES PRIOR TO EXCAVATION.
- SYSTEM OPERATION AND DESIGN IS BASED ON 75 POUNDS OF PRESSURE AND 18 GALLONS AT THE SHUTOFF VALVE. THE CONTRACTOR SHALL VERIFY THE DESIGN PRESSURE AND VOLUME BEFORE INSTALLATION AND NOTIFY OWNER IF THERE IS A DISCREPANCY.
- CONTRACTOR SHALL REFERENCE PLANTING PLAN(S) PRIOR TO INSTALLATION OF VALVES. LOCATE VALVES IN PLANTING BEDS WHEREVER POSSIBLE. ADJUST VALVE LOCATIONS TO ELIMINATE CONFLICT WITH PROPOSED PLANTINGS AND PLANTING PATTERNS.
- VALVE LOCATIONS SHALL BE STAKED BY THE CONTRACTOR AND APPROVED BY THE OWNER'S REPRESENTATIVE PRIOR TO INSTALLATION OF NEW IRRIGATION SYSTEM.
- THE CONTRACTOR SHALL VERIFY THE DIMENSIONS AND LAYOUT OF ALL NEW PLANTING AND LAWN AREAS ON SITE BEFORE STARTING WORK AND IMMEDIATELY NOTIFY OWNER OF ANY DEVIATIONS FROM PLAN.
- NEW TREE LOCATIONS SHALL BE STAKED BY THE CONTRACTOR AND APPROVED BY THE OWNER'S REPRESENTATIVE PRIOR TO INSTALLATION OF NEW IRRIGATION SYSTEM.
- THE CONTRACTOR SHALL INSTALL THE IRRIGATION CONTROLLER(S) AT THE LOCATION(S) SHOWN ON THE DRAWINGS. ON THE SPECIFIED PEDESTAL PER THE MANUFACTURER'S RECOMMENDATIONS. THE CONTRACTOR SHALL VERIFY THE LOCATION WITH THE OWNER PRIOR TO INSTALLATION. THE CONTRACTOR SHALL EXTEND CONTROL WIRE CONDUIT FROM CONTROLLER AND DAYLIGHT SIX INCHES INTO PLANTING BED FOR INSTALLATION OF AUTOMATIC VALVE WIRES.
- ALL BACKFLOW PREVENTION DEVICES SHALL BE LOCATED A MINIMUM OF 5'-0" AWAY FROM CURBS OR PAVING WHEREVER POSSIBLE.
- MAIN AND LATERAL LINES MAY BE SHOWN DIAGRAMMATICALLY FOR CLARITY. MAIN AND LATERAL LINES SHOWN IN PAVED AREAS SHALL BE PLACED IN ADJACENT PLANTING BEDS UNLESS SPECIFICALLY SHOWN AS PASSING UNDER PAVING IN SLEEVING (SEE LEGEND FOR SLEEVE SYMBOL). THE CONTRACTOR MUST OBTAIN THE LANDSCAPE ARCHITECT'S APPROVAL BEFORE MAKING CHANGES IN ROUTING OF PIPE OR LOCATION OF VALVES.
- THE CONTRACTOR IS RESPONSIBLE FOR COORDINATING AND PROVIDING AN APPROPRIATE POWER SUPPLY TO THE IRRIGATION CONTROLLER LOCATION.

KEYNOTES

- POINT OF CONNECTION LOCATION SHOWN FOR REFERENCE ONLY. FIELD LOCATION MAY VARY. SURVEY LOCATION OF WATER UTILITIES NOT AVAILABLE FOR SOUTH GATEWAY. UTILITIES TO BE PROVIDED BY CITY.



GreenWorks, P.C.
Landscape Architecture
Environmental Design
3100 Independence Lane SE
Portland, Oregon 97202
Phone: 503.251.1234
Fax: 503.251.1235
Email: info@greenworks.com



Project: Coos Bay Gateway Improvements
City of Coos Bay
South Gateway
South Gateway
Contract: Randy Olson, rfo@coosbay.org

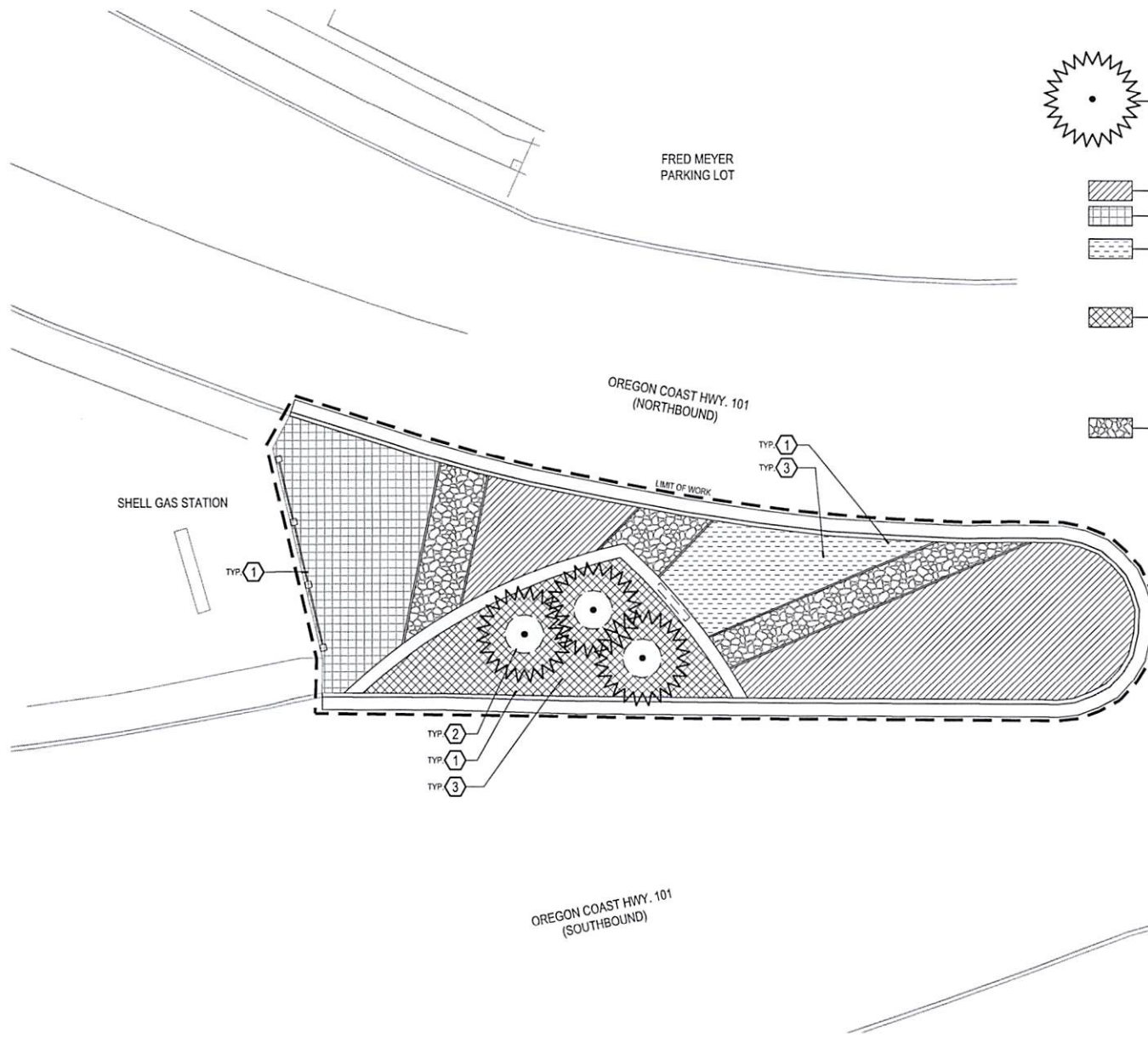
Submitted: 100% CDs
Sheet Title: Irrigation Plan - South Gateway

Date: 06/26/2017
Revisions:

Drawn By: WS
Checked By: DW
Job No.: 116056.1
Approved: MF

L11.0

Sheet No. 12 of 17



PLANTING LEGEND

TREES					1	2
					L13.3	L13.3
BOTANICAL NAME	COMMON NAME	SIZE & TYPE	SPACING	QTY.		
THUJA PLICATA 'HOGAN'	HOGAN RED CEDAR	6'-8" HT. BAB	AS SHOWN	3		
SHRUBS/GROUNDCOVERS/MULCH					1	4
					L13.3	L13.3
BOTANICAL NAME	COMMON NAME	SIZE & TYPE	SPACING	QTY.	5	6
					L13.3	L13.3
SESLERIA AUTUMNALIS	AUTUMN MOOR GRASS	1 GAL. CONT.	15" O.C.	745	7	8
CEANOTHUS GLORIOSUS 'POINT REYES'	POINT REYES CEANOTHUS	1 GAL. CONT.	36" O.C.	91	L13.3	L13.3
PLANTING MIX - A (MIXED PLANTING - TWO PLANTS)						
PLANT THE FOLLOWING SHRUBS AND GROUNDCOVERS ON A 6" O.C. TRIANGULAR GRID:						
ARMERIA MARITIMA	SEA THRIFT	1 GAL. CONT.	18" O.C.	240		
SEDUM DIVERGENS	PACIFIC STONECROP	4" POTS	8" O.C.	130		
PLANTING MIX - B (MIXED PLANTING - THREE PLANTS)						
PLANT THE FOLLOWING SHRUBS AND GROUNDCOVERS ON A 12" O.C. TRIANGULAR GRID:						
POLYSTICHUM MINUTUM	WESTERN SWORD FERN	1 GAL. CONT.	36" O.C.	84		
GAULTHERIA SWALLOW	SALAL	1 GAL. CONT.	24" O.C.	169		
EUPHORBIA X MARTINI 'TINY TIM'	DWARF SPURGE	1 GAL. CONT.	12" O.C.	483		
MULCH					5	
					L13.1	
RIVER ROCK MULCH						

PLANTING NOTES

- CONTRACTOR SHALL PROVIDE PLANTING SOIL, SOIL AMENDMENTS, AND MULCH TO THE COMPOSITION AND DEPTHS IN ACCORDANCE WITH THE DETAILS AND SPECIFICATIONS OF THE CONTRACT DOCUMENTS.
- ALL PLANTS SHALL BE INSTALLED IN ACCORDANCE WITH THE DETAILS AND THE SPECIFICATIONS PROVIDED AS PART OF THE CONTRACT DOCUMENTS.
- QUANTITIES ARE LISTED FOR THE CONTRACTOR'S CONVENIENCE ONLY. ALL COUNTS MUST BE VERIFIED BY THE CONTRACTOR. IN THE CASE OF A DISCREPANCY BETWEEN THE LEGEND AND THE PLAN, PLANTS INDICATED ON THE PLAN SHALL SUPERCEDE QUANTITIES LISTED IN THE LEGEND.
- UTILITY LOCATIONS SHOWN ON PLANS MAY DIFFER FROM FIELD CONDITIONS. CONTRACTOR TO FIELD VERIFY ALL UTILITIES BEFORE INSTALLATION. CONFLICTS BETWEEN ANY EXISTING AND PROPOSED UTILITIES ARE TO BE BROUGHT TO THE ATTENTION OF THE OWNERS REPRESENTATIVE IMMEDIATELY.

KEYNOTES

- SHRUBS AND GROUNDCOVERS TO BE SPACED 6" ONE-HALF SPECIFIED ON-CENTER SPACING (O.C.) WHEN ADJACENT TO PAVED AREAS.
- PROVIDE A 5' DIAMETER BARK MULCH RING (2" DEPTH) FOR NEW TREES.
- PROVIDE 12" DEPTH PLANTING SOIL TO ALL PLANTING AREAS.

GREENWORKS

GreenWorks, P.C.
Landscape Architecture
30 NW 3rd Avenue, Suite 101
Astoria, Oregon 97103
Phone: 503.325.2222
Email: info@greenworks-pc.com

REGISTERED
LANDSCAPE ARCHITECT
OREGON



Project: Coos Bay Gateway Improvements
City of Coos Bay
South Gateway Area
Coos Bay, OR 97520
Contract: Emily Olson, eolson@greenbay.org

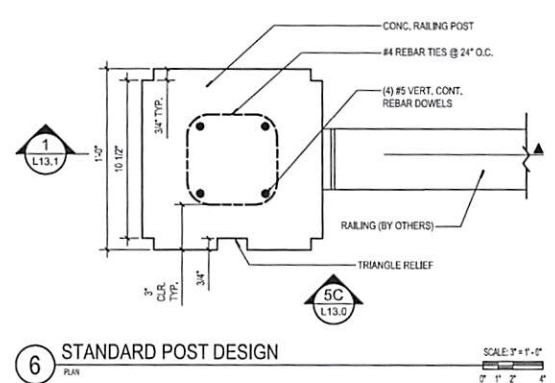
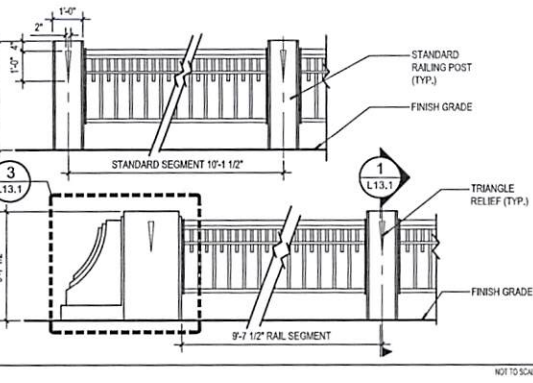
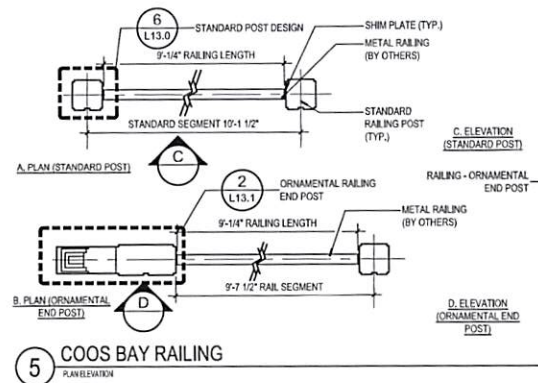
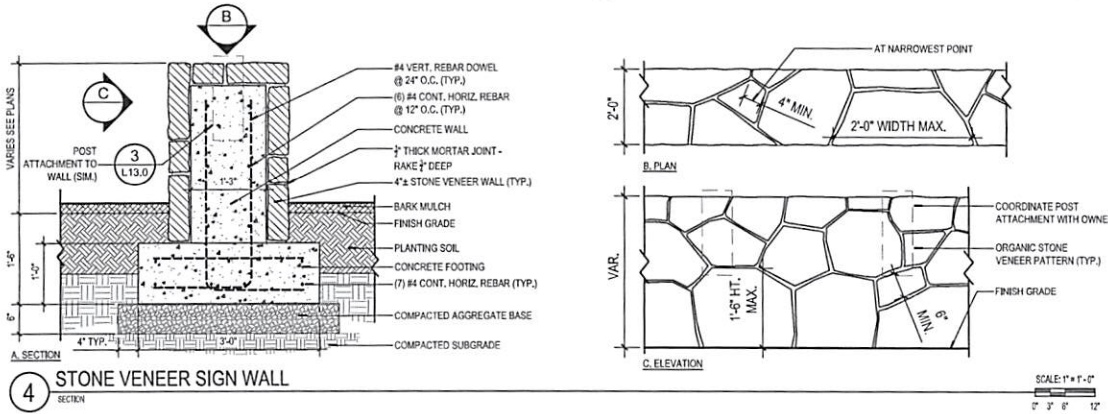
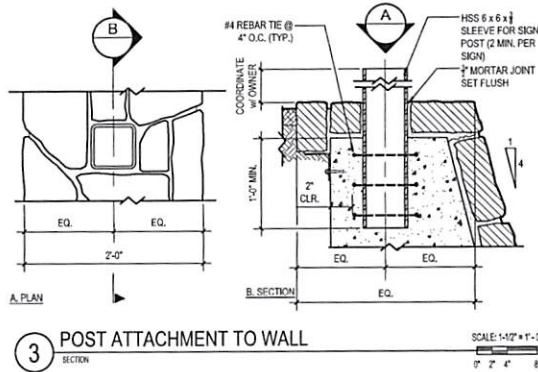
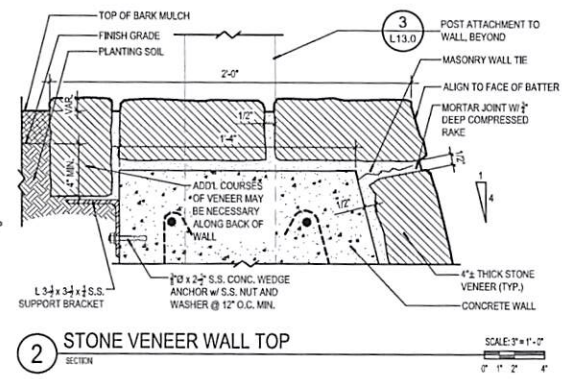
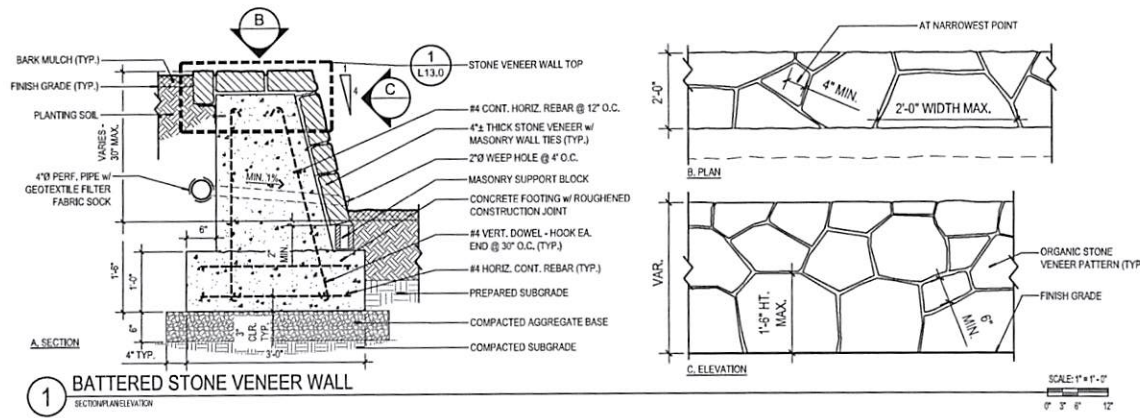
100% CDs
Submitted: 06/25/2017
Sheet Title: Planting Plan South Gateway

Date: 06/25/2017
Revisions:

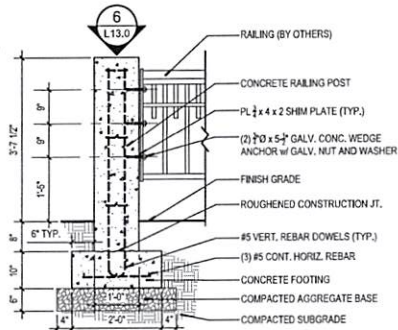
Drawn By: ws
Checked By: DW
Job No: 116056.1
Approved: MF

L12.0

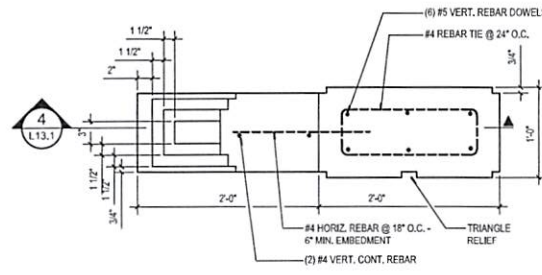
Sheet No. 13 of 17



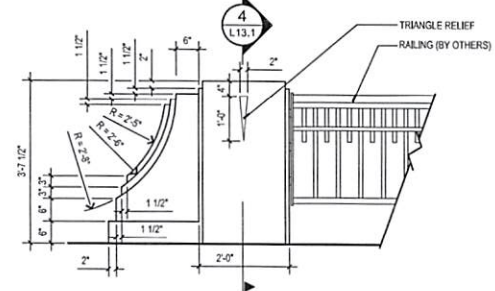
NOTE:
1. RAILING BY OTHERS.
COORDINATE WITH
OWNER, COLOR TO
MATCH EXISTING CITY
RAILINGS.



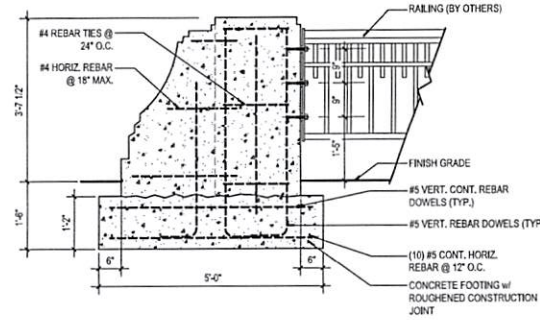
1 STANDARD RAILING POST
SECTION
SCALE: 3/4" = 1'-0"



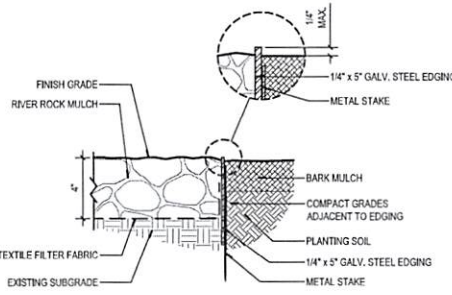
2 ORNAMENTAL RAILING END POST DESIGN
PLAN
SCALE: 1 1/2" = 1'-0"



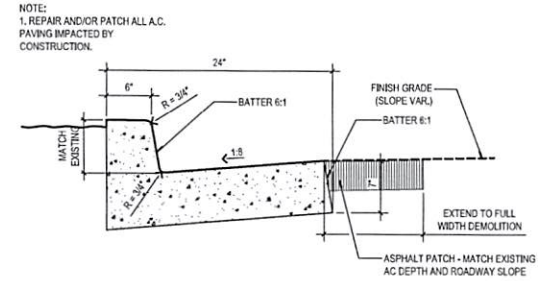
3 ORNAMENTAL END POST
ELEVATION
SCALE: 3/4" = 1'-0"



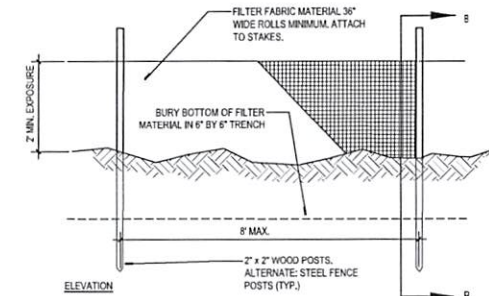
4 ORNAMENTAL END POST
ELEVATION
SCALE: 3/4" = 1'-0"



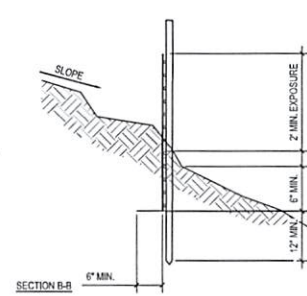
5 METAL EDGING
SECTION
SCALE: 3/4" = 1'-0"



6 ODOT CURB AND GUTTER
SECTION
SCALE: 1 1/2" = 1'-0"



7 SILT FENCE
ELEVATION
SCALE: 3/4" = 1'-0"



8 SILT FENCE
SECTION B-B
SCALE: 3/4" = 1'-0"

NOTES:

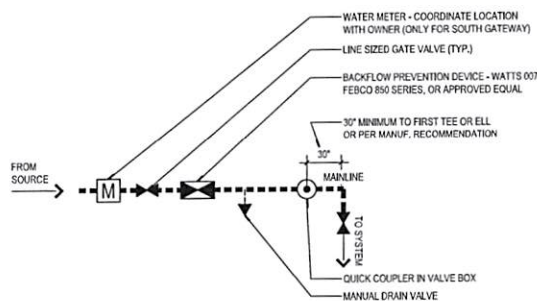
1. INSTALLATION SHALL FOLLOW THE MANUFACTURER'S RECOMMENDATIONS.
2. POSTS SHALL BE INSTALLED SO THAT A MIN. OF 3'-0" EXTENDS ABOVE THE GROUND WITH A MIN. OF 2'-0" EMBEDMENT.
3. FILTER FABRIC SHALL BE PURCHASED IN A CONTINUOUS ROLL TO AVOID JOINTS.
4. SPLICE JOINTS AT SUPPORT POSTS ONLY, WITH A MIN. 6" OVERLAP.



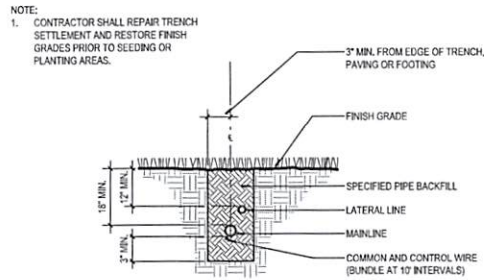
Coos Bay Gateway Improvements
City of Coos Bay
1100 1st St
Coos Bay, OR 97331
Contact: Randy Flack, rflack@coosbay.org

Submitted: 100% CDs
Sheet Title: Site Details
Date: 06/26/2017
Revisions:
Drawn By: WVS
Checked By: MF
Job No: 116056.1
Approved: DW

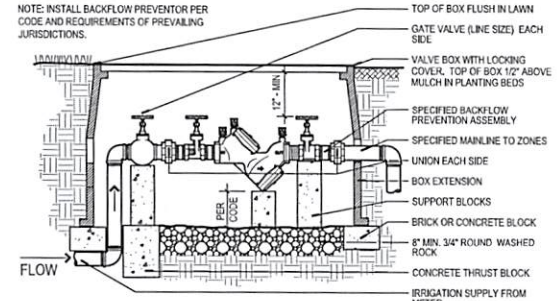
L13.1
Sheet No. 15 of 17



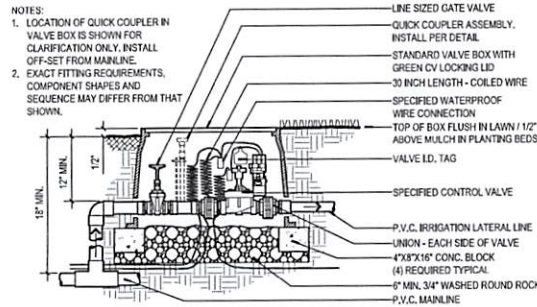
1 POINT OF CONNECTION DIAGRAM
PLAN NOT TO SCALE



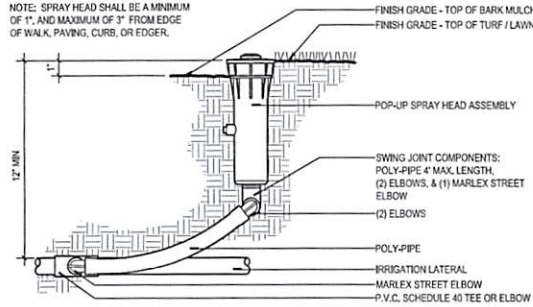
2 TRENCHING IN PLANTING AREA
SECTION NOT TO SCALE



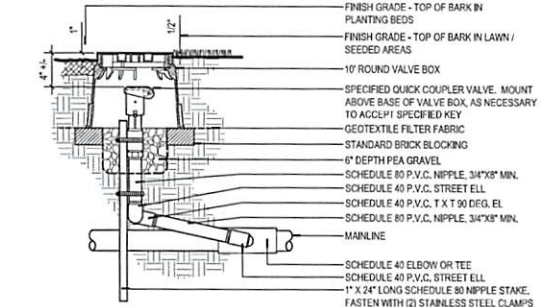
3 BACKFLOW PREVENTION ASSEMBLY
SECTION NOT TO SCALE



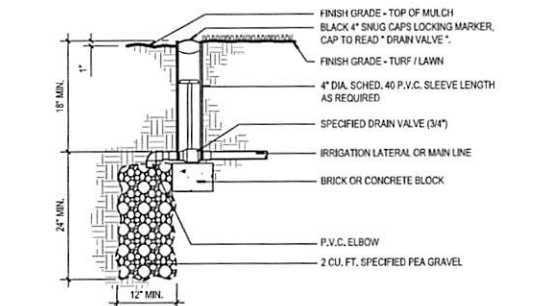
4 AUTOMATIC CONTROL VALVE ASSEMBLY
SECTION NOT TO SCALE



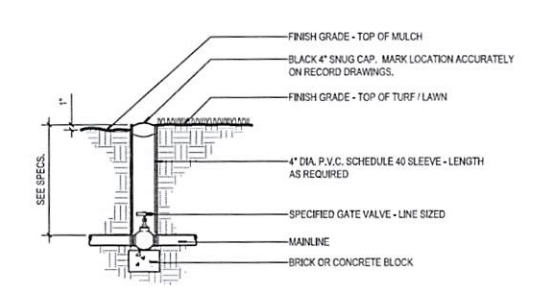
5 SPRAY HEAD - POLY SWING PIPE ASSEMBLY
SECTION NOT TO SCALE



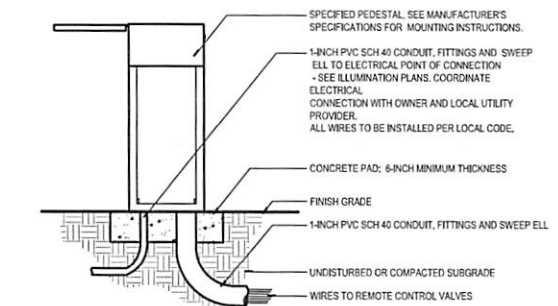
6 QUICK COUPLER VALVE ASSEMBLY
SECTION NOT TO SCALE



7 MANUAL DRAIN VALVE ASSEMBLY
SECTION NOT TO SCALE



8 GATE VALVE ASSEMBLY
SECTION NOT TO SCALE



9 PEDESTAL MOUNT AUTOMATIC CONTROLLER
SECTION NOT TO SCALE

