

File: G:\e\p\2012\212024 Egyptian Theatre\212024S01.dwg TAB: Layout1  
Plotted: 2/28/24 at 10:53am By: scott.s  
XREF: 2/28/24

DRAWING INDEX	
S0.1	DRAWING INDEX AND LIST OF ABBREVIATIONS
S0.2	GENERAL STRUCTURAL NOTES
S0.3	STATEMENT OF SPECIAL INSPECTIONS AND TESTING
S0.4	DEMOLITION PLAN
S2.0	GROUND FLOOR PLAN
S2.1	MEZZANINE FRAMING PLAN
S2.2	ROOF FRAMING PLAN
S5.1	DETAILS
S5.2	DETAILS
A2.2	ROOF PLAN

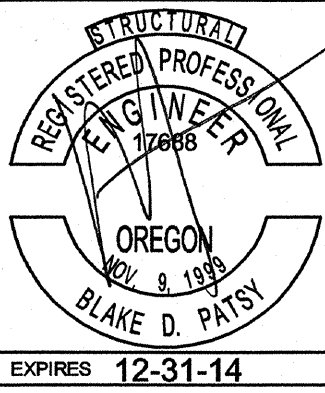
ABBREVIATIONS

A.B.	ANCHOR BOLT	FIN.	FINISH	PART.	PARTITION
ACI	AMERICAN CONCRETE INSTITUTE	FLR.	FLOOR	P/C	PRECAST
ADD'L	ADDITIONAL	FT.	FOOT	PCF	POUNDS PER CUBIC FOOT
AESS	ARCHITECTURAL EXPOSED STRUCTURAL STEEL	FTG.	FOOTING	PL	PLATE
AISC	AMERICAN INSTITUTE OF STEEL CONSTRUCTION INCORPORATED	GA.	GAUGE	P.P.	PARTIAL PENETRATION
ALT.	ALTERNATE	GALV.	GALVANIZED	PSI	POUNDS PER SQUARE INCH
ALUM.	ALUMINUM	GL	GLULAM	P/T	POST-TENSIONED
APA	AMERICAN PLYWOOD ASSOCIATION	HORIZ	HORIZONTAL	P.T.	PRESSURE TREATED
ARCH.	ARCHITECT	HSS	HOLLOW STRUCTURAL SECTION	PVC	POLYVINYL CHLORIDE
ASCE	AMERICAN SOCIETY OF CIVIL ENGINEERS	IBC	INTERNATIONAL BUILDING CODE	R. RAD.	RADIUS
ASTM	AMERICAN SOCIETY FOR TESTING AND MATERIALS	ICBO	INTERNATIONAL CONFERENCE OF BUILDING OFFICIALS	RCSC	RESEARCH COUNCIL ON STRUCTURAL CONNECTIONS
AWS	AMERICAN WELDING SOCIETY	ICC	INTERNATIONAL CODE COUNCIL	REF.	REFERENCE
BLDG.	BUILDING	I.D.	INSIDE DIAMETER	RET.	RETURN
BOT.	BOTTOM	IN.	INCH	REINF.	REINFORCING
BRBF	BUCKLING RESTRAINED BRACED FRAME	INT.	INTERIOR	REQ'D.	REQUIRED
C.G.	CENTER OF GRAVITY	K	KIPS	REQ'MTS.	REQUIREMENTS
C.I.P.	CAST IN PLACE	KSF	KIPS PER SQUARE FOOT	SCHED.	SCHEDULE
C.J.	CONTROL JOINT	KSI	KIPS PER SQUARE INCH	S.C.	SLIP CRITICAL
C.J.P.	COMPLETE JOINT PENETRATION	LBS.	POUND	SIM.	SIMILAR
CL	CENTERLINE	LL.	LIVE LOAD	SLRS	SEISMIC LOAD RESISTING SYSTEM
CLR.	CLEAR	LLH	LONG LEG HORIZONTAL	S.O.G.	SLAB ON GRADE
CMU	CONCRETE MASONRY UNIT	LLV	LONG LEG VERTICAL	SPEC.	SPECIFICATION
COL.	COLUMN	LOC.	LOCATION	SQ.	SQUARE
CONC.	CONCRETE	LONG.	LONGITUDINAL	SS	STAINLESS STEEL
CONN.	CONNECTION	LVF	LOW VELOCITY FASTENER	SSMA	STEEL STUD MANUFACTURERS ASSOCIATION
CONST.	CONSTRUCTION	MAX.	MAXIMUM	STD.	STANDARD
CONT.	CONTINUOUS	MBMA	METAL BUILDING MANUFACTURERS ASSOCIATION	STRUCT.	STRUCTURAL
db	BAR DIAMETER	MECH.	MECHANICAL	SYM.	SYMMETRICAL
DBA	DEFORMED BAR ANCHOR	MFR.	MANUFACTURER	THRU	THROUGH
DET.	DETAIL	MIN.	MINIMUM	T&G	TONGUE AND GROOVE
DIA., Ø	DIAMETER	MISC.	MISCELLANEOUS	TJ	TRUSS JOIST
DIAG.	DIAGONAL	MPH	MILES PER HOUR	TRANS.	TRANSVERSE
D.L.	DEAD LOAD	MT	MAGNETIC PARTICLE TESTING	TS	LIGHT GAUGE TUBE STEEL
DWG.	DRAWING	(N)	NEW	TYP.	TYPICAL
ELEC.	ELECTRICAL	N.I.C.	NOT IN CONTRACT	U.N.O.	UNLESS NOTED OTHERWISE
EL.	ELEVATION	NOM.	NOMINAL	UT	ULTRASONIC TESTING
EQ.	EQUAL	NO.	NUMBER	VERT.	VERTICAL
EXIST., (E)	EXISTING	N.T.S.	NOT TO SCALE	V.I.F.	VERIFY IN FIELD
EXP.	EXPANSION	o.c.	ON CENTER	w/	WITH
EXT.	EXTERIOR	O.D.	OUTSIDE DIAMETER	WF	WIDE FLANGE
FDN.	FOUNDATION	OPP.	OPPOSITE	w/o	WITHOUT
		OWJ	OPEN WEB JOIST	W.P.	WORK POINT
		PAF	POWDER ACTUATED FASTENER	WPS	WELDING PROCEDURE SPECIFICATION
				WWF	WELDED WIRE FABRIC

CITY OF COOS BAY  
EGYPTIAN THEATRE PHASE 1 IMPROVEMENTS  
229 SOUTH BROADWAY  
COOS BAY, OREGON

**kpff**  
Consulting Engineers  
111 SW 9th Avenue  
Suite 2500  
Portland, OR 97204  
503-227-5251

PROJECT NO: 212024  
DRAWN: BJS  
CHECKED: RWV  
DATE: 09-28-2013



100% CONSTRUCTION DOCUMENTS  
DRAWING INDEX AND LIST OF ABBREVIATIONS







SPECIAL INSPECTIONS AND TESTING PROGRAM

TABLE 1 - REQUIRED GEOTECHNICAL SPECIAL INSPECTIONS					
SYSTEM OR MATERIAL	INSPECTION				REMARKS
	IBC CODE REFERENCE	CODE OR STANDARDS REFERENCE	FREQUENCY (NOTE 5)		
			CONTINUOUS	PERIODIC	
SOILS					
VERIFY MATERIALS BELOW FOOTINGS ARE ADEQUATE TO ACHIEVE THE DESIGN BEARING CAPACITY	1704.7	GEOTECHNICAL REPORT		X	BY THE GEOTECHNICAL ENGINEER
VERIFY EXCAVATIONS ARE EXTENDED TO PROPER DEPTH AND HAVE REACHED PROPER MATERIAL				X	
PERFORM CLASSIFICATION AND TESTING OF CONTROLLED FILL MATERIALS				X	
VERIFY USE OF PROPER MATERIALS, DENSITIES AND LIFT THICKNESSES DURING PLACEMENT AND COMPACTION OF CONTROLLED FILL			X		
MICRO PILE PLACEMENT					
OBSERVE OPERATIONS AND MAINTAIN COMPLETE AND ACCURATE RECORDS FOR EACH MICRO PILE	1704.9	GEOTECHNICAL REPORT	X		BY THE GEOTECHNICAL ENGINEER
VERIFY PLACEMENT LOCATIONS AND PLUMBNESS, CONFIRM DIAMETERS, REINFORCING, LENGTHS, EMBEDMENT INTO BEDROCK (IF APPLICABLE), RECORD CONCRETE OR GROUT VOLUMES			X		
FOR CONCRETE MICRO PILES, PERFORM ADDITIONAL INSPECTIONS	1704.4				REFER TO TABLE 2 - CONCRETE FOR ADDITIONAL MATERIALS RELATED SPECIAL INSPECTIONS AND TABLE 3 FOR TESTING BY SPECIAL INSPECTOR

TABLE 2 - REQUIRED STRUCTURAL SPECIAL INSPECTIONS					
SYSTEM OR MATERIAL	INSPECTION			REMARKS	
	IBC CODE REFERENCE	CODE OR STANDARD REFERENCE	FREQUENCY (NOTE 5)		
			CONTINUOUS	PERIODIC	
FABRICATORS					
FABRICATORS	1704.2		X		WHERE FABRICATION OF STRUCTURAL LOAD-BEARING MEMBERS AND ASSEMBLIES IS BEING PERFORMED ON THE PREMISES OF A FABRICATOR'S SHOP, SPECIAL INSPECTION OF THE FABRICATED ITEMS SHALL BE REQUIRED BY TABLE 2 AND AS REQUIRED ELSEWHERE IN THE SPECIAL INSPECTION PROGRAM. REFERENCE SECTION 1704.2.2 FOR APPROVED FABRICATOR EXCEPTION.
CONCRETE					
REINFORCING STEEL	1704.4	ACI 318 1.3.2.C ACI 318 3.5 ACI 318 7.1 TO 7.7		X	TOLERANCE AND REINFORCING PLACEMENT PER ACI 7.5
WELDING REINFORCING STEEL	1704.3.1 1903.1	ACI 318 3.5.2 AWS D1.4, SECTION 7			REFER TO STEEL FOR WELDING REQUIREMENTS
PLACEMENT OF CAST IN PLACE ANCHOR BOLTS	1704.4 1911.1 1912.1	ACI 318 1.3.2.C ACI 318 21.1-1.8	X		ALL BOLTS VISUALLY INSPECTED
VERIFYING USE OF REQUIRED MIX DESIGN(S)	1704.4 1904 1905.2.4 1913.2 1913.3	ACI 318 1.3.2.A ACI 318, CHAPTER 4 ACI 318 5.2-5.4		X	
CONCRETE PLACEMENT, NON-SHRINK GROUT	1704.4 1905.9-10	ACI 318 1.3.2.D ACI 318 5.9-5.10	X		
CONCRETE CURING	1704.4 1905.11-13 1913.9	ACI 318 1.3.2.D ACI 318 5.11-5.13		X	
REINFORCING STEEL MECHANICAL COUPLERS, TERMINATORS AND FORMSAVERS		ICC EVALUATION REPORTS		X	
STEEL					
FABRICATION OF STRUCTURAL ELEMENTS	1704.2			X	REFER TO INSPECTION OF FABRICATOR REQUIREMENTS
MATERIAL VERIFICATION OF STRUCTURAL STEEL	1704.3 2203.1	ASTM A6 AISC 360 A3.1 AISC 360 M5, 5		X	CERTIFIED MILL TEST REPORTS
MATERIAL VERIFICATION OF HIGH STRENGTH BOLTS, NUTS, AND WASHERS	1704.3.3	AISC 360 A3.3		X	MANUFACTURER'S CERTIFIED TEST REPORTS
MATERIAL VERIFICATION OF ANCHOR BOLTS AND THREADED RODS	1704.3	AISC 360 A3.4		X	MANUFACTURER'S CERTIFIED TEST REPORTS
MATERIAL VERIFICATION OF WELD FILLER METALS	1704.3.1	AISC 360 A3.5		X	MANUFACTURER'S CERTIFIED TEST REPORTS
VERIFYING USE OF PROPER WPS'S				X	COPY OF WELDING PROCEDURE SPECIFICATIONS
VERIFYING WELDER QUALIFICATIONS				X	COPY OF QUALIFICATION CARDS

TABLE 2 CONTINUED - REQUIRED STRUCTURAL SPECIAL INSPECTIONS					
SYSTEM OR MATERIAL	INSPECTION			REMARKS	
	IBC CODE REFERENCE	CODE OR STANDARDS REFERENCE	FREQUENCY (NOTE 5)		
			CONTINUOUS	PERIODIC	
COMPLETE AND PARTIAL JOINT PENETRATION GROOVE WELDS	1704.3.1 1704.4	AWS D1.1 SECTION 6	X		ALL WELDS VISUALLY INSPECTED PER AWS D1.1 6.9
MULTIPASS FILLET WELDS			X		
SINGLE PASS FILLET WELDS LESS THAN OR EQUAL TO 5/16"				X	
SNUG-TIGHT HIGH STRENGTH BOLT INSTALLATION	1704.3	RCSC SPECIFICATION FOR STRUCTURAL JOINTS USING ASTM A325 OR A490 BOLTS SECTION 9 AISC 360 M2.5		X	ALL CONNECTIONS VISUALLY INSPECTED
VERIFICATION OF FRAME JOINT DETAILS INCLUDING MEMBER AND COMPONENT LOCATIONS, BRACING, AND STIFFENERS	1704.3.2			X	
MATERIAL VERIFICATION OF WELD FILLER METALS				X	MANUFACTURER'S CERTIFIED TEST REPORTS
VERIFYING USE OF PROPER WPS'S				X	COPY OF WELDING PROCEDURE SPECIFICATIONS
VERIFYING WELDER QUALIFICATIONS				X	COPY OF QUALIFICATION CARDS
POST INSTALLED CONCRETE ANCHORS					
EXPANSION ANCHORS INSTALLATION IN HARDENED CONCRETE AND COMPLETED MASONRY	1703.4.2 1704.15 1912.1	ICC EVALUATION REPORT ACI 318: 3.8.8, 21.1.8	X	X (NOTE 6)	INSPECTION REQUIREMENTS PER ICC EVALUATION REPORT
EPOXY ANCHORS INSTALLATION IN HARDENED CONCRETE AND COMPLETED MASONRY			X		INSPECTION REQUIREMENTS PER ICC EVALUATION REPORT

TESTING

TABLE 3 - REQUIRED TESTING FOR SPECIAL INSPECTIONS				
SYSTEM OR MATERIAL	TESTING			REMARKS
	IBC CODE REFERENCE	CODE OR STANDARD REFERENCE	FREQUENCY	
			CONTINUOUS	
GEOTECHNICAL				
TEST PILES				BY THE GEOTECHNICAL ENGINEER
CONCRETE				
CONCRETE STRENGTH	1903 1704.4 1905.6	ASTM C39	EACH 150 CY NOR LESS THAN EACH 5000 SF OF SLAB OR WALL PLACED EACH DAY	FABRICATE SPECIMENS AT TIME FRESH CONCRETE IS PLACED
CONCRETE SLUMP		ASTM C143		
CONCRETE AIR CONTENT		ASTM C231		
CONCRETE TEMPERATURE		ASTM C1064		
STEEL				
MAGNETIC PARTICLE (MT) AND ULTRASONIC (UT) TESTING OF WELDS		MT - AWS D1.1 6.14.4 UT - AWS D1.1 6.13 & 6.14.3	PER DRAWINGS	ALL C.J.P. WELDS REQUIRE UT TESTING

STATEMENT OF SPECIAL INSPECTION NOTES:

- SPECIAL INSPECTIONS SHALL CONFORM TO SECTION 1704 OF THE 2010 OSSC. REFER TO TABLES 1 AND 2 FOR SPECIAL INSPECTION AND TABLE 3 FOR TESTING REQUIREMENTS.
- SPECIAL INSPECTIONS AND ASSOCIATED TESTING SHALL BE PERFORMED BY AN APPROVED ACCREDITED INDEPENDENT AGENCY MEETING THE REQUIREMENTS OF ASTM E329 (MATERIALS), ASTM D3740 (SOILS), ASTM C1077 (CONCRETE), ASTM A880 (STEEL), AND ASTM E843 (NON-DESTRUCTIVE). THE INSPECTION AND TESTING AGENCY SHALL FURNISH TO THE STRUCTURAL ENGINEER A COPY OF THEIR SCOPE OF ACCREDITATION. SPECIAL INSPECTORS SHALL BE CERTIFIED BY THE BUILDING OFFICIAL. WELDING INSPECTORS SHALL BE QUALIFIED PER SECTION 8.1.4.1.1 OF AWS D1.1.
- THE SPECIAL INSPECTOR SHALL OBSERVE THE INDICATED WORK FOR COMPLIANCE WITH THE APPROVED CONSTRUCTION DOCUMENTS. ALL DISCREPANCIES SHALL BE BROUGHT TO THE ATTENTION OF THE CONTRACTOR FOR CORRECTION AND NOTED IN THE INSPECTION REPORTS.
- THE SPECIAL INSPECTOR SHALL FURNISH INSPECTION REPORTS FOR EACH INSPECTION TO THE BUILDING OFFICIAL, STRUCTURAL ENGINEER, CONTRACTOR, AND OWNER. THE SPECIAL INSPECTION AGENCY SHALL SUBMIT A FINAL REPORT STATING THAT THE WORK REQUIRING SPECIAL INSPECTION WAS INSPECTED AND IS IN CONFORMANCE WITH THE APPROVED CONSTRUCTION DOCUMENTS AND THAT ALL DISCREPANCIES NOTED IN THE INSPECTION REPORTS HAVE BEEN CORRECTED.
- CONTINUOUS INSPECTION: THE FULL-TIME OBSERVATION OF WORK REQUIRING SPECIAL INSPECTION BY AN APPROVED SPECIAL INSPECTOR WHO IS PRESENT IN THE AREA WHERE THE WORK IS BEING PERFORMED.

PERIODIC INSPECTION: THE PART-TIME OR INTERMITTENT OBSERVATION OF WORK REQUIRING SPECIAL INSPECTION BY AN APPROVED SPECIAL INSPECTOR WHO IS PRESENT IN THE AREA WHERE THE WORK HAS BEEN OR IS BEING PERFORMED AND AT THE COMPLETION OF THE WORK.

6. WHERE PERIODIC INSPECTION IS ALLOWED IN ACCORDANCE WITH AN EXPANSION ANCHOR'S ICC EVALUATION REPORT, INSPECTIONS SHALL BE AS FOLLOWS:

FOR ALL ANCHORS, PRIOR TO CONCEALMENT, VERIFY: ANCHOR TYPE, ANCHOR DIMENSIONS, ANCHOR SPACING AND EDGE DISTANCES.

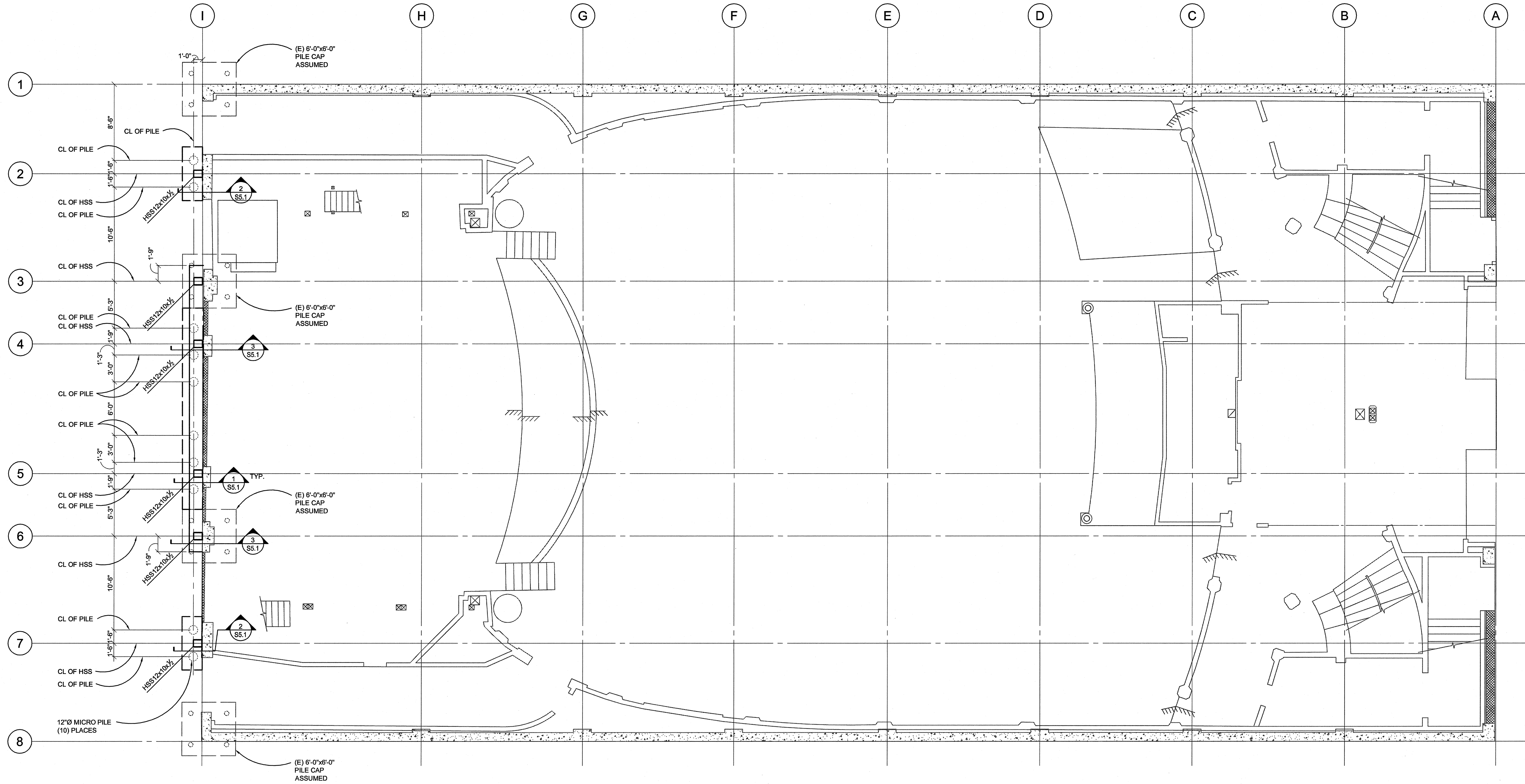
- FOR EACH ANCHOR TYPE AND SIZE, INSPECTOR SHALL BE ONSITE TO CONTINUOUSLY INSPECT A MINIMUM OF THE FIRST 10 ANCHORS INSTALLED BY EACH INSTALLER FOR CONFORMANCE WITH ICC EVALUATION REPORT. PROVIDED ALL ANCHORS ARE INSTALLED CORRECTLY PER MANUFACTURER'S INSTRUCTIONS, PROVIDE PERIODIC INSPECTION ON A MINIMUM OF 10% OF THE NEXT 1000 ANCHORS BY EACH INSTALLED AND A MINIMUM OF 5% OF THE REMAINING ANCHORS BY EACH INSTALLER. INSPECTIONS SHALL OCCUR A MINIMUM OF ONCE PER WEEK AT A RANDOM TIME WHILE ANCHOR INSTALLATION IS ONGOING. ANY NON-COMPLIANCE ISSUES SHALL RESET THE INSPECTION REQUIREMENTS TO TEN (10) CONTINUOUS INSPECTIONS. NON-COMPLIANT ANCHORS SHALL BE BROUGHT TO THE ATTENTION OF THE ENGINEER OF RECORD FOR REVIEW AND SHALL BE BROUGHT INTO COMPLIANCE BY EITHER TESTING OR RE-INSTALLATION.
- INSPECTION REPORTS SHALL IDENTIFY NAMES OF INSTALLERS.

- SPECIAL INSPECTOR SHALL PROVIDE DOCUMENTATION AT THE END OF ANCHOR INSTALLATIONS STATING THAT THE MINIMUM NUMBER OF ANCHORS WERE INSPECTED.





File: G:\e\p\2012\212024 Egyptian Theatre\212024S20.dwg TAB: layout1  
Plotted: 3/25/24 at 10:55am By: acott  
XREF: 212024115



PLAN NOTES:

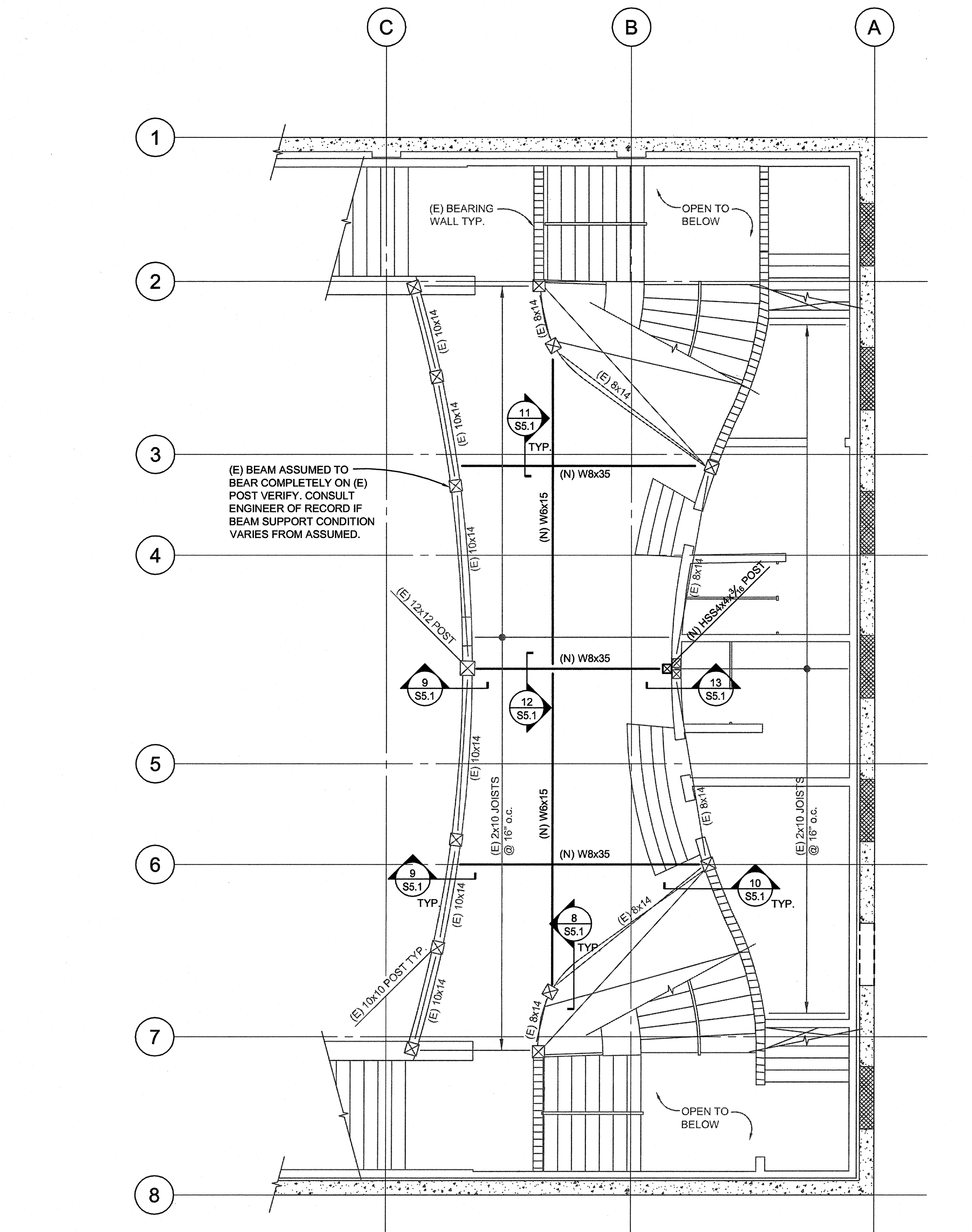
1. (E) INDICATES EXISTING.
2. ——— INDICATES EXISTING STRUCTURE.
3. CONTRACTOR TO VERIFY ALL EXISTING CONDITIONS, DIMENSIONS, AND ELEVATIONS PRIOR TO FABRICATION AND ERECTION AND NOTIFY ENGINEER OF ANY SIGNIFICANT DISCREPANCIES FROM THAT SHOWN ON THE DRAWINGS.
4. ——— CONTRACTOR TO SHORE ALL EXISTING FRAMING AS REQUIRED FOR DEMOLITION AND REFRAMING WORK.
5. ——— INDICATES EXISTING CONCRETE WALL.
6. PROVIDE NEW SLAB ON GRADE SIDEWALK w/ #4 @ 12" o.c. EACH WAY AT (N) FOOTINGS AS REQUIRED. DOWEL (N) REINF. INTO (N) FOOTING AND PROVIDE 6" EPOXY EMBEDMENT INTO CENTER OF (E) SLAB.

1 GROUND FLOOR PLAN  
3/16"=1'-0"

CITY OF COOS BAY	
EGYPTIAN THEATRE PHASE 1 IMPROVEMENTS	
229 SOUTH BROADWAY	
COOS BAY, OREGON	
PROJECT NO:	212024
DRAWN:	BJS
CHECKED:	RMV
DATE:	03-28-2015
100% CONSTRUCTION DOCUMENTS	
GROUND FLOOR PLAN	
S2.0	



File: G:\a\p\2012\212024 Egyptian Theatre\212024S21.dwg TAB:Layout1  
Plotted: 3/25/13 at 10:53am By: acotts  
XREF: 21202410



- PLAN NOTES:**
- (E) INDICATES EXISTING.
  - (N) INDICATES NEW.
  - INDICATES EXISTING STRUCTURE.
  - CONTRACTOR TO VERIFY ALL EXISTING CONDITIONS, DIMENSIONS, AND ELEVATIONS PRIOR TO FABRICATION AND ERECTION AND NOTIFY ENGINEER OF ANY SIGNIFICANT DISCREPANCIES FROM THAT SHOWN ON THE DRAWINGS.
  - CONTRACTOR TO SHORE ALL EXISTING FRAMING AS REQUIRED FOR DEMOLITION AND REFRAMING WORK.
  - INDICATES EXISTING CONCRETE WALL.

- FINISH NOTES:**
- WHERE NEW STEEL BEAM OCCURS BELOW EXISTING CEILING, PROVIDE GYPBOARD ENCLOSURE WITH TEXTURED FINISH AND PAINT TO MATCH EXISTING CEILING.
  - PATCH EXISTING CEILING AT NEW BEAM LOCATIONS TO MATCH EXISTING.
  - PATCH EXISTING WALLS/SOFFITS AT NEW BEAM CONNECTIONS TO EXISTING FRAMING, TYPICAL TO MATCH EXISTING.

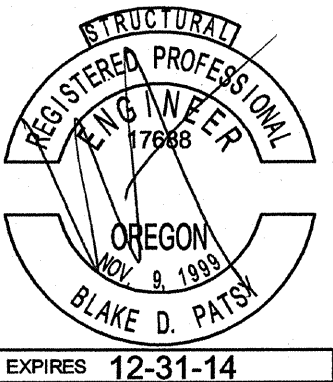
1 MEZZANINE FRAMING PLAN  
3/16"=1'-0"

NO.	REVISIONS	BY	DATE

CITY OF COOS BAY  
EGYPTIAN THEATRE PHASE 1 IMPROVEMENTS  
229 SOUTH BROADWAY  
COOS BAY, OREGON

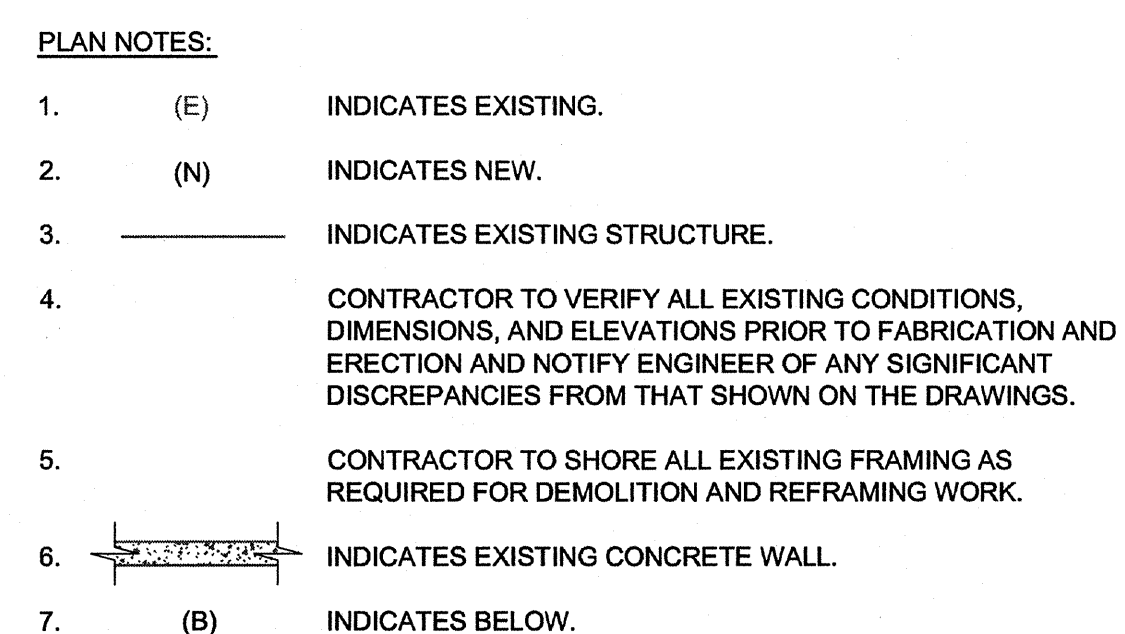


PROJECT NO: 212024  
DRAWN: BJS  
CHECKED: RWW  
DATE: 03-28-2013



100% CONSTRUCTION DOCUMENTS  
MEZZANINE FRAMING PLAN

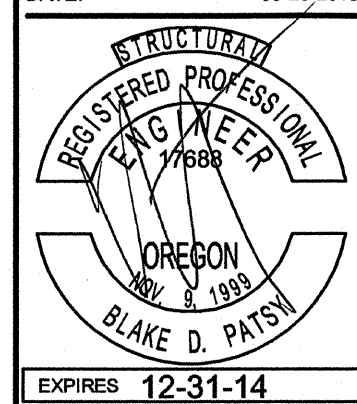
S2.1

[illegible]

CITY OF COOS BAY  
EGYPTIAN THEATRE PHASE 1 IMPROVEMENTS  
229 SOUTH BROADWAY  
COOS BAY, OREGON



PROJECT NO:	212024
DRAWN:	BJS
CHECKED:	RWW
DATE:	03-28-2013



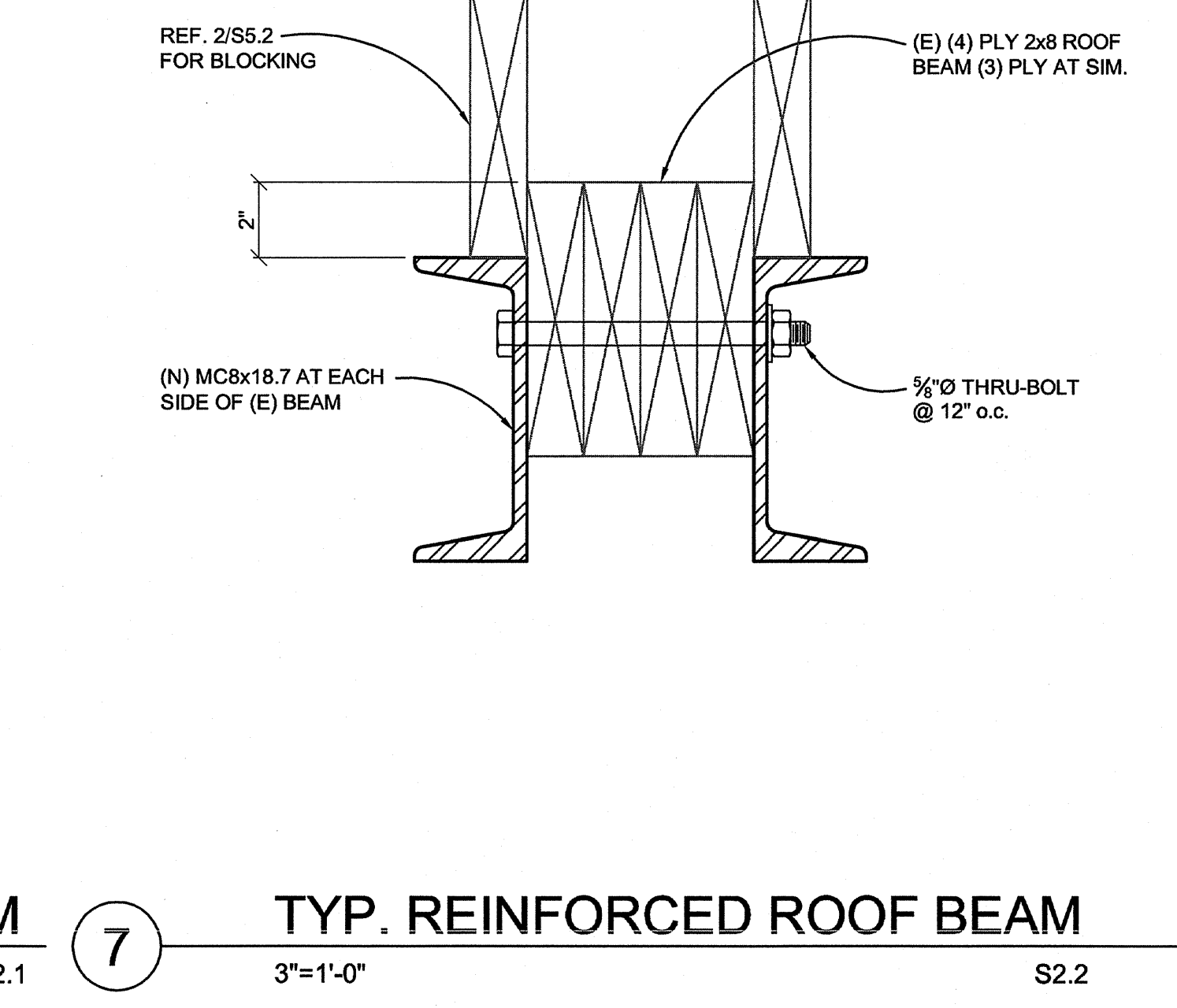
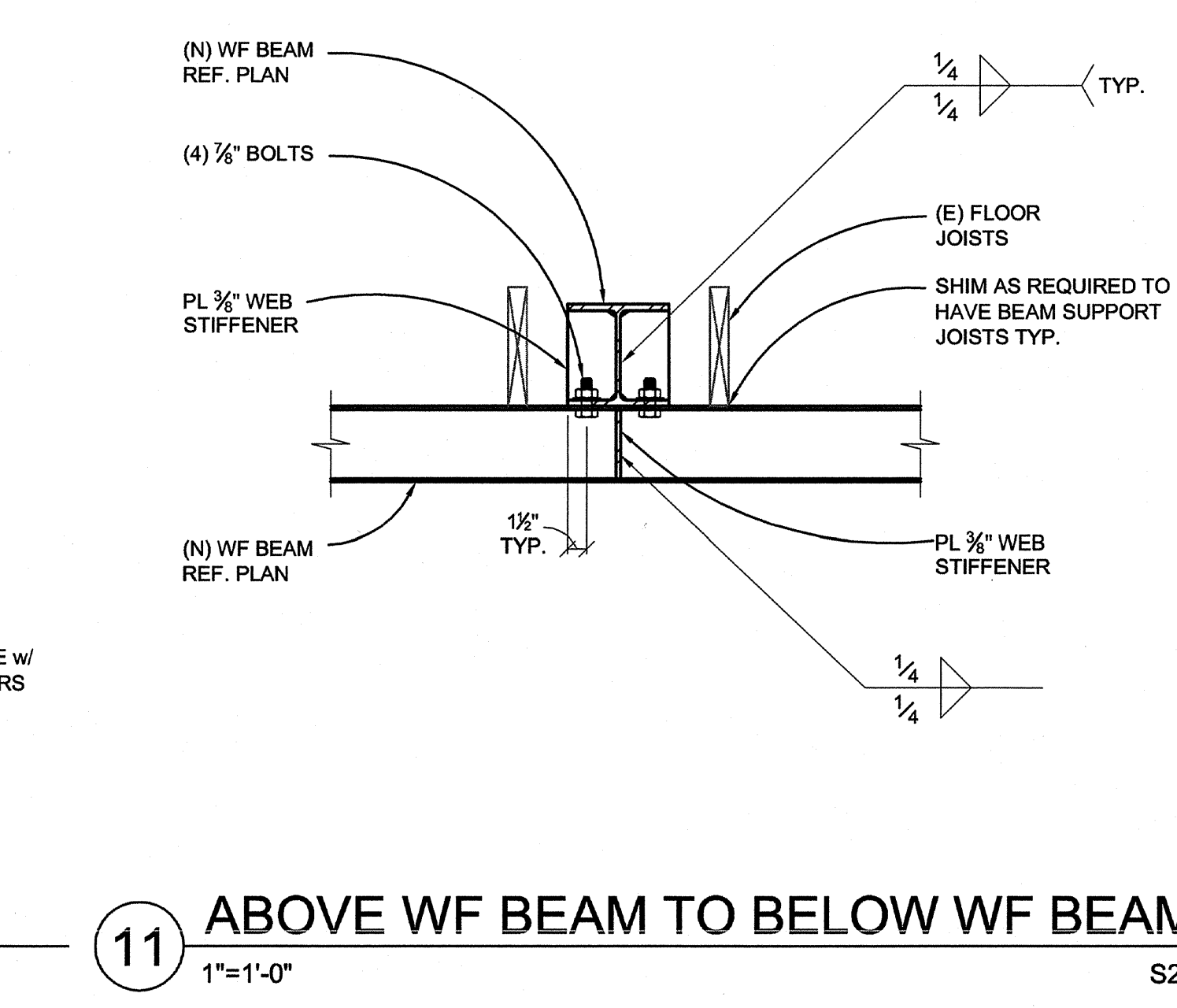
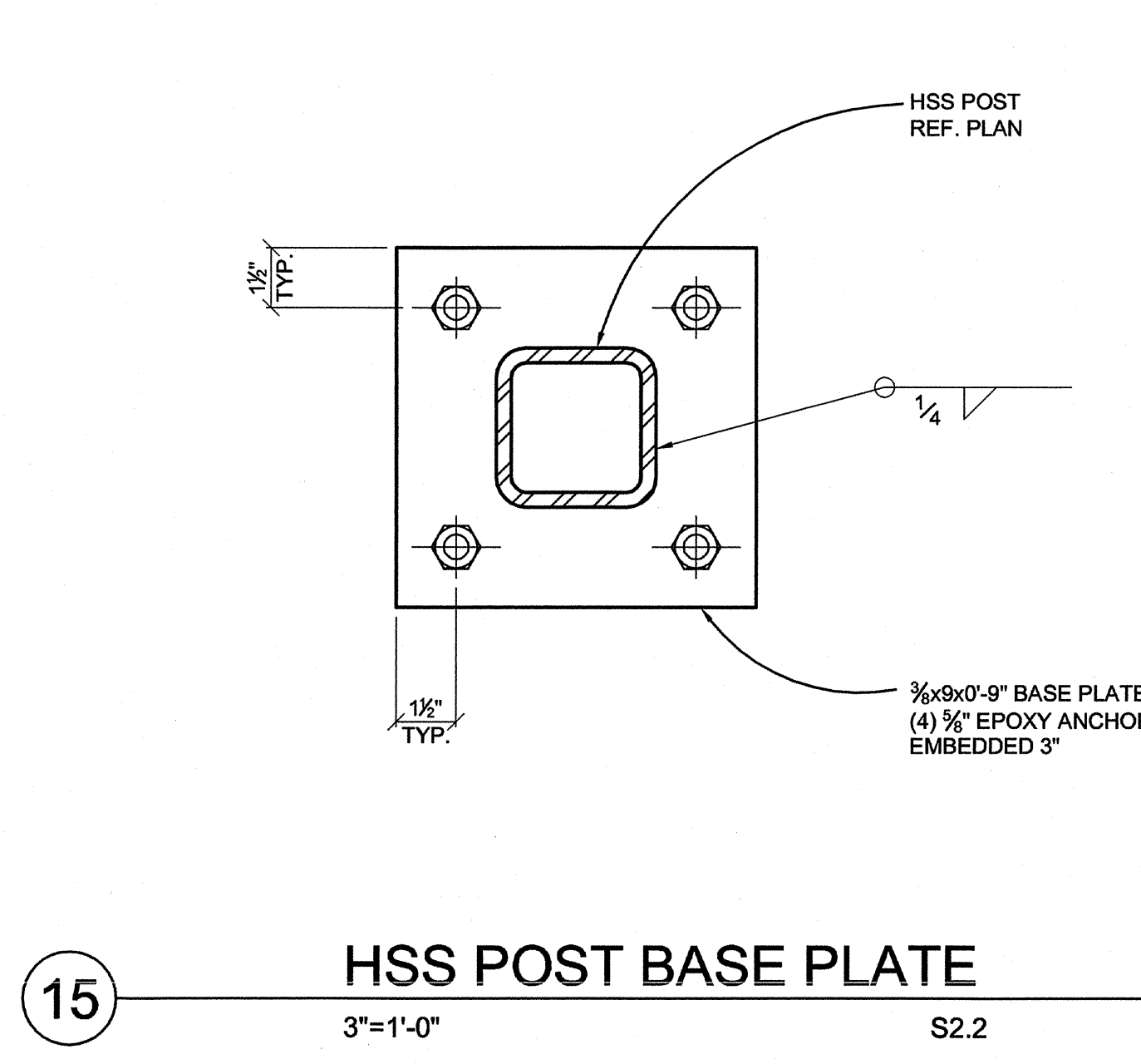
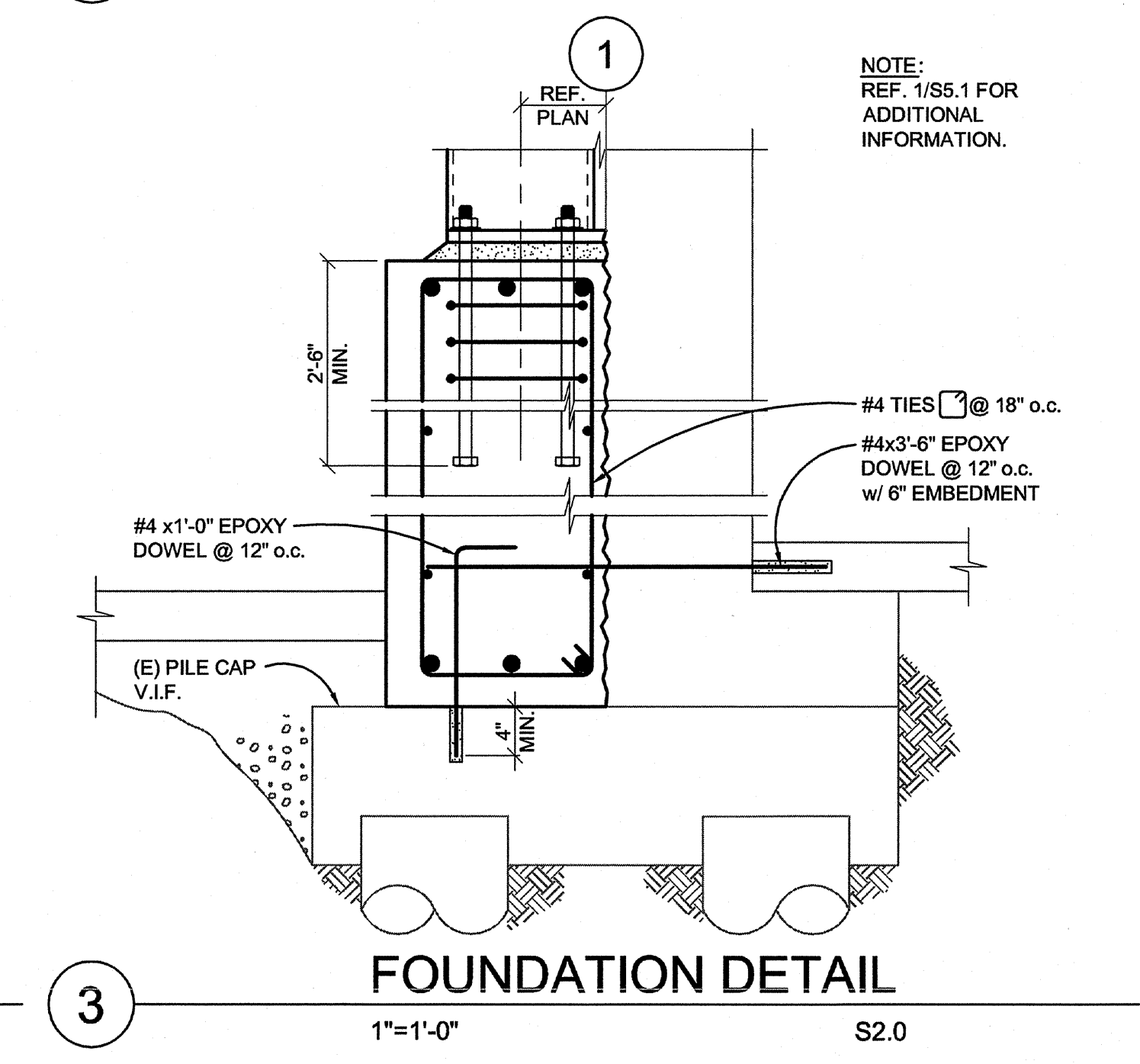
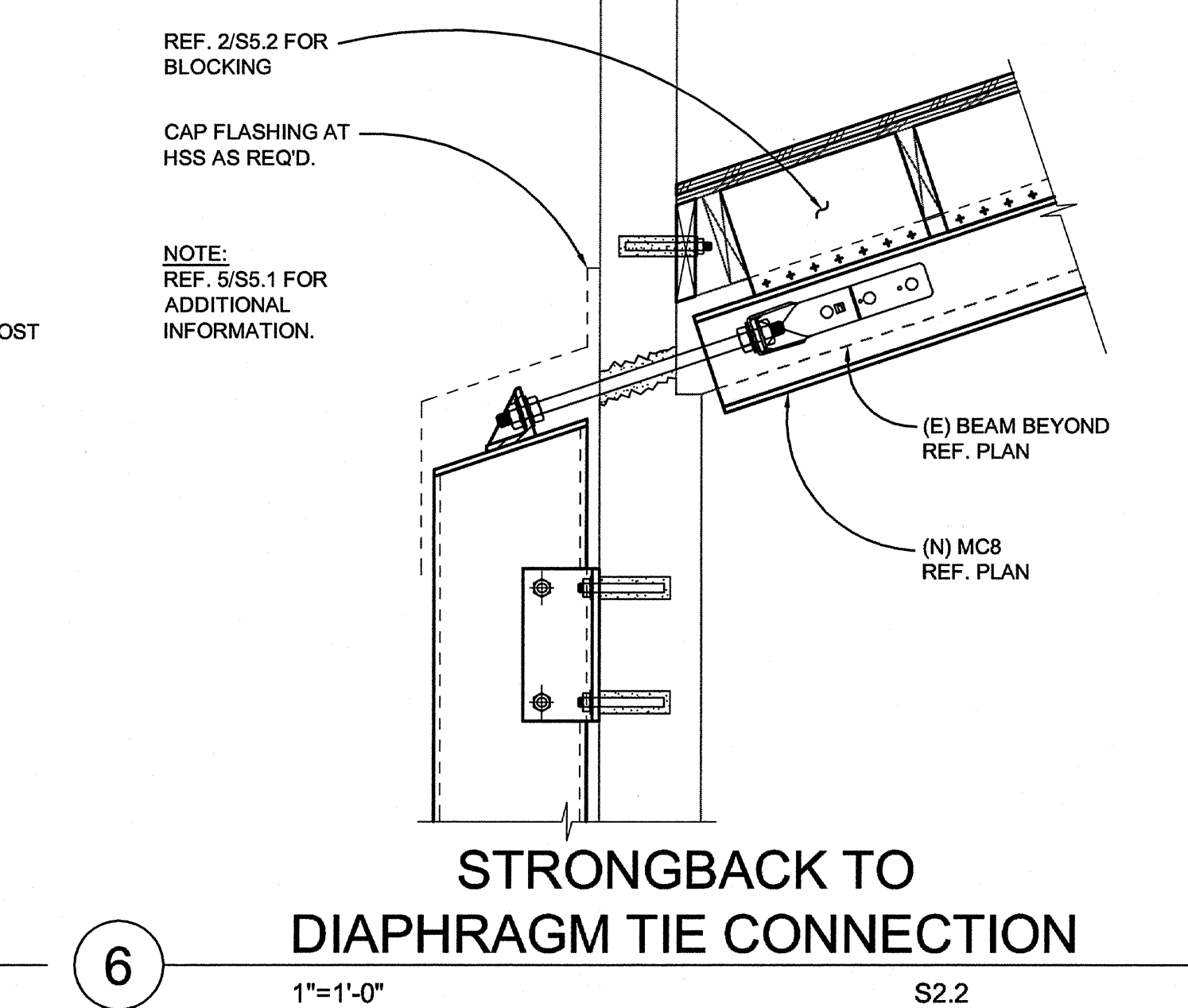
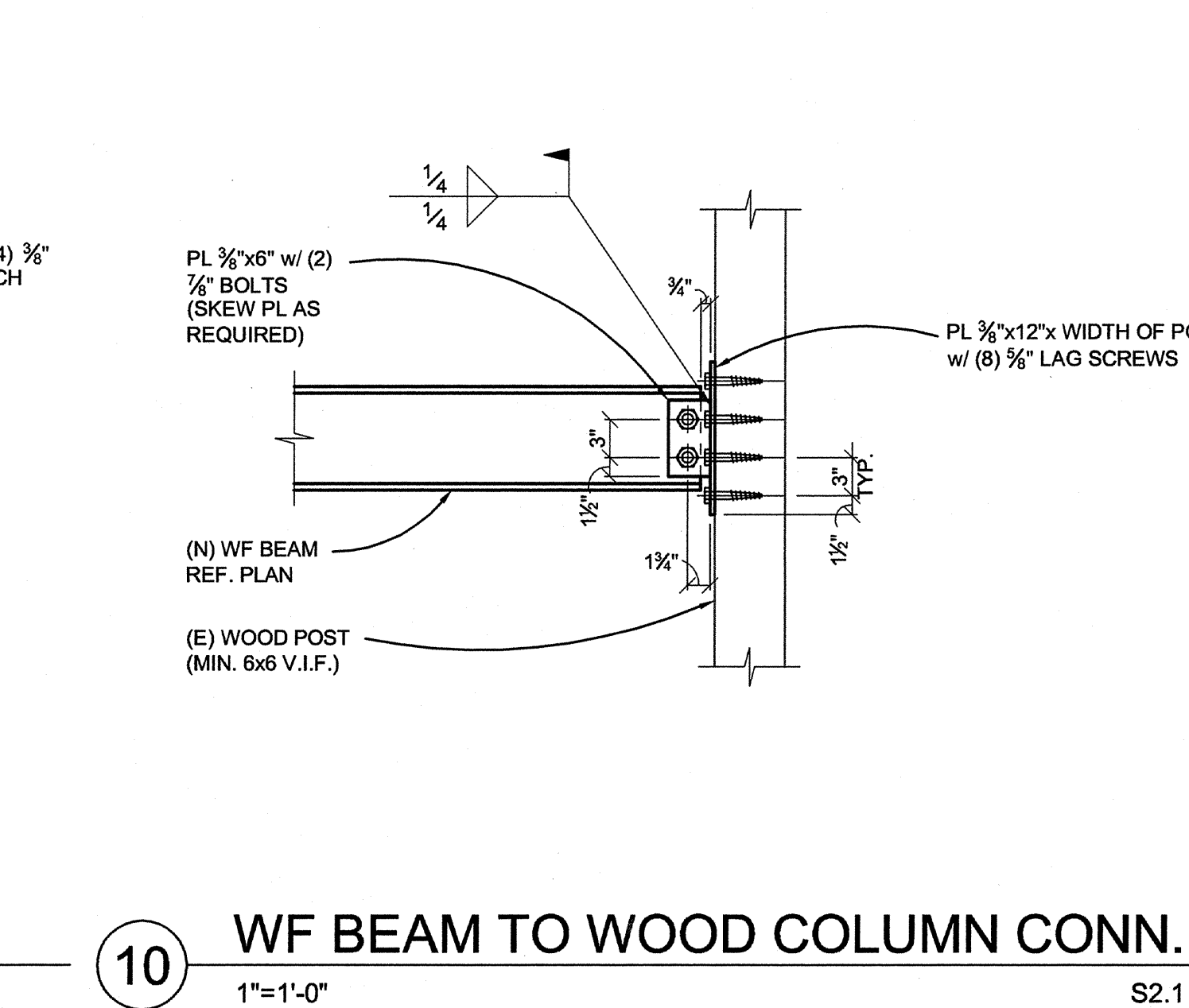
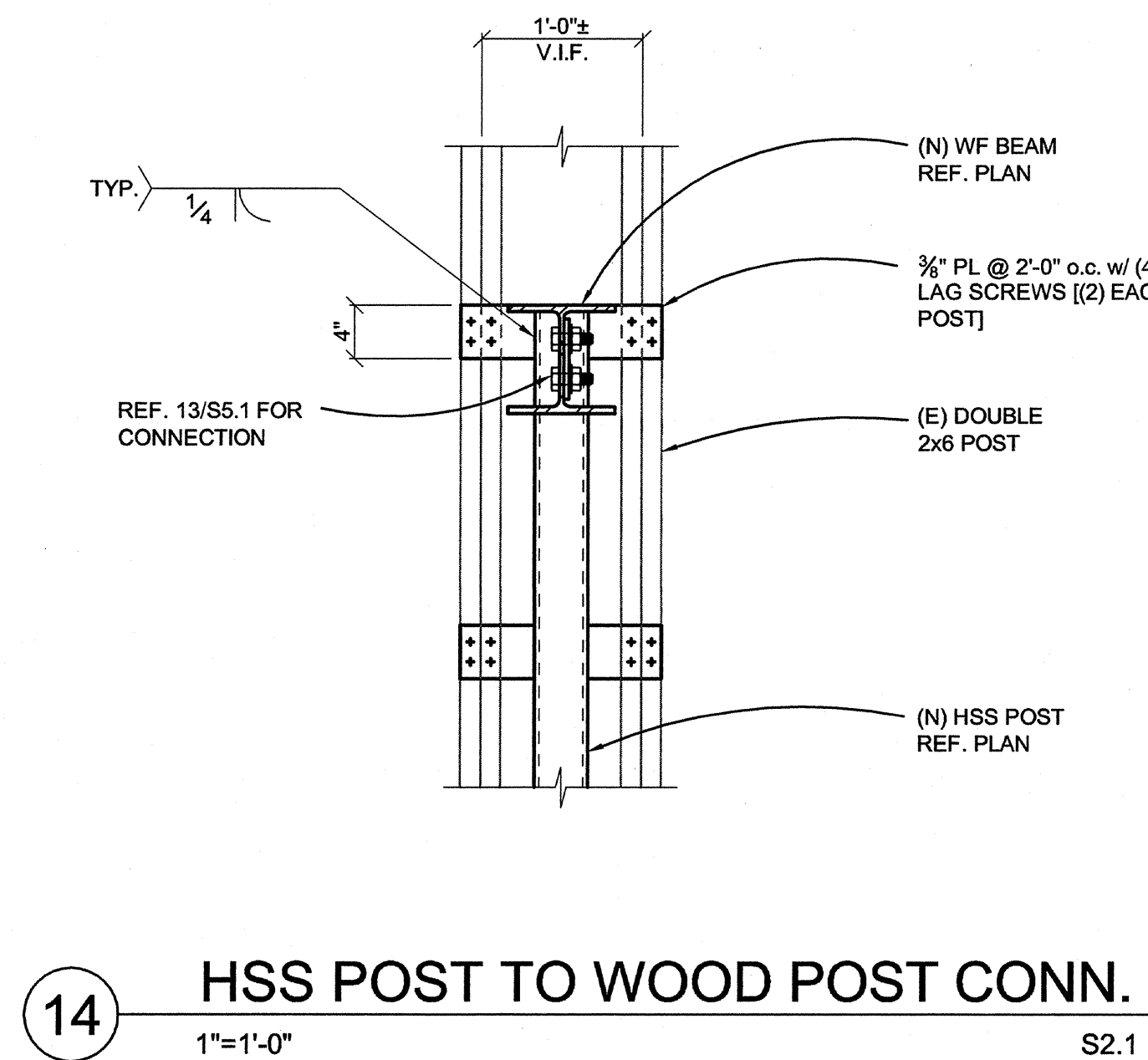
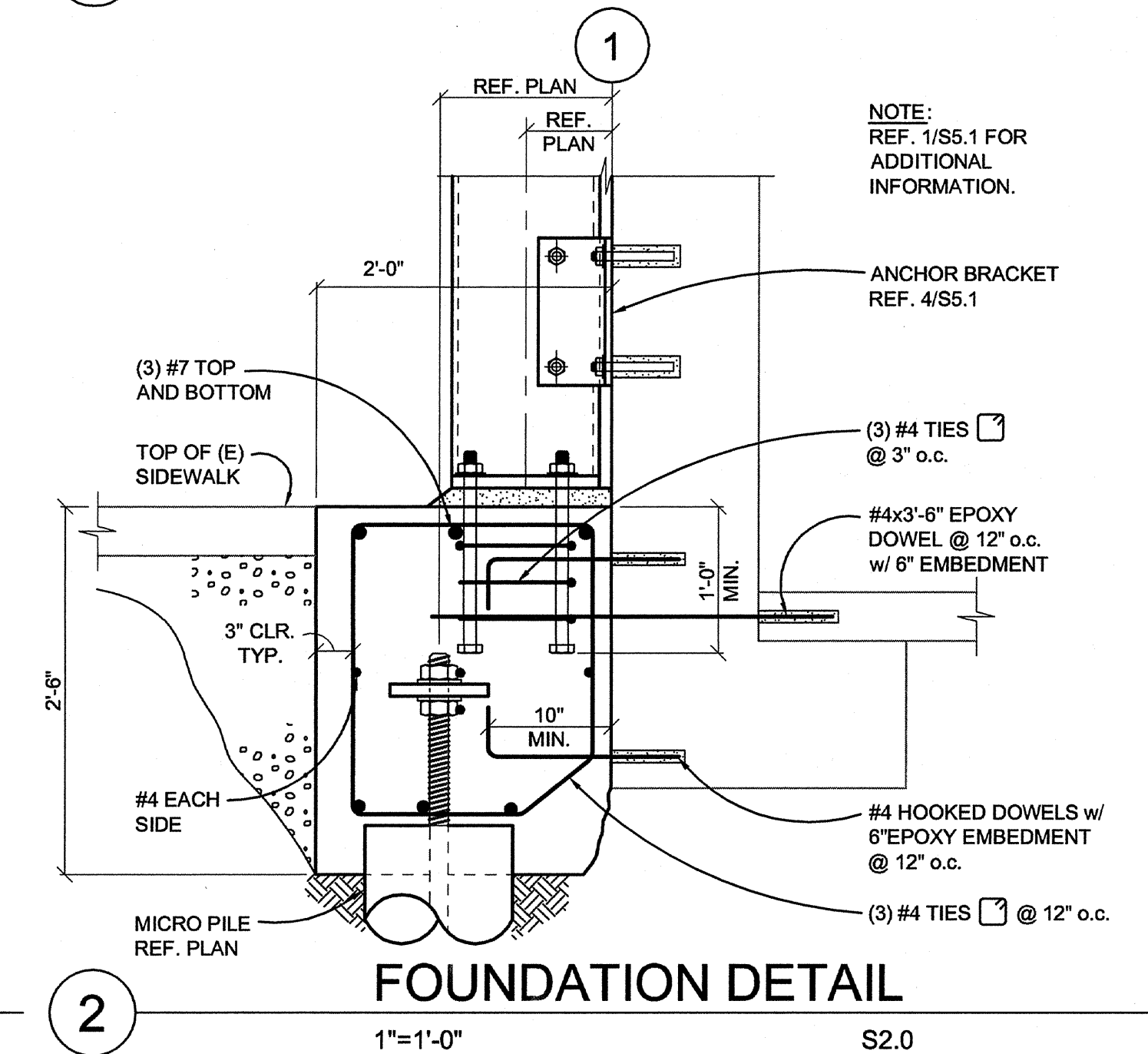
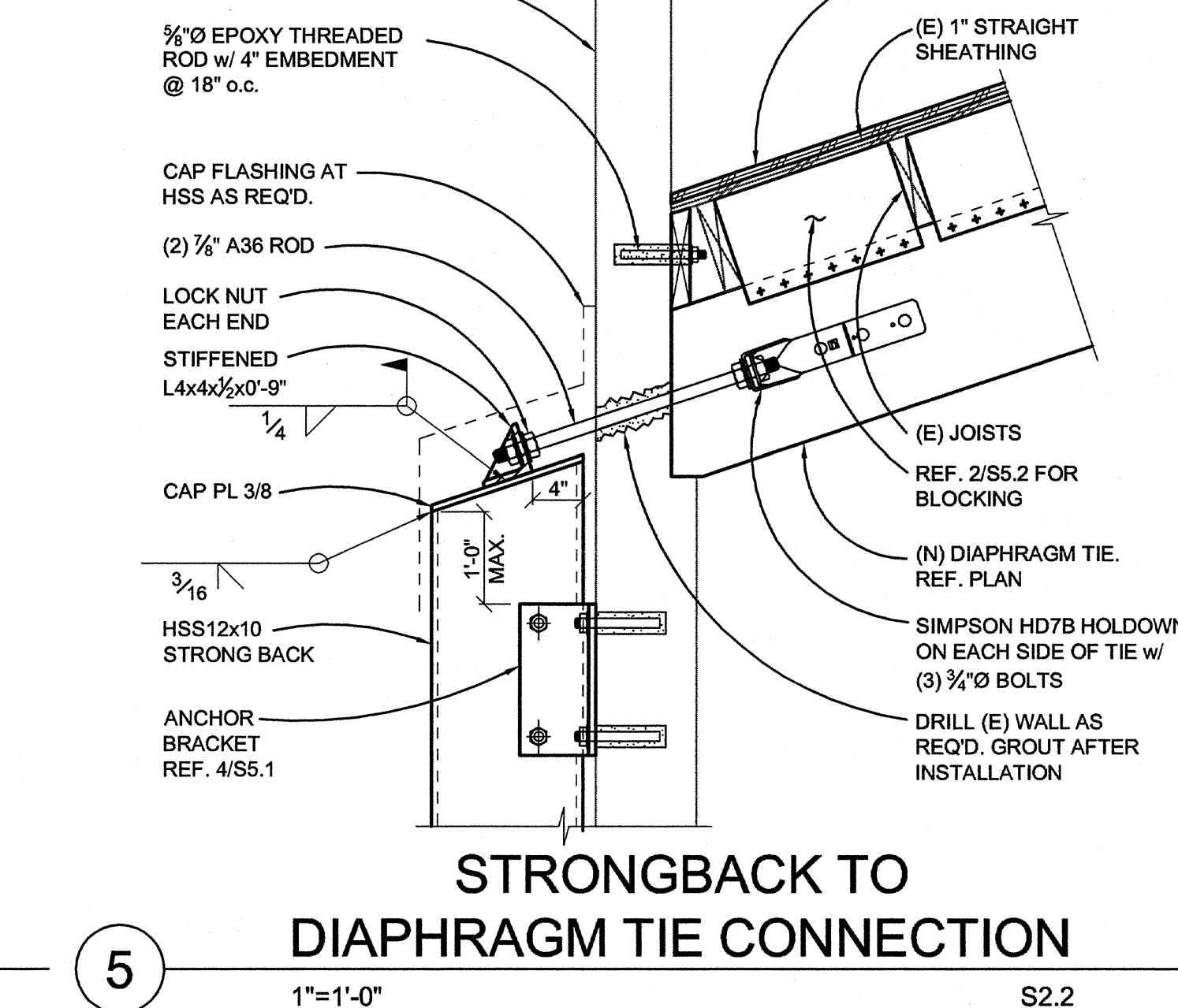
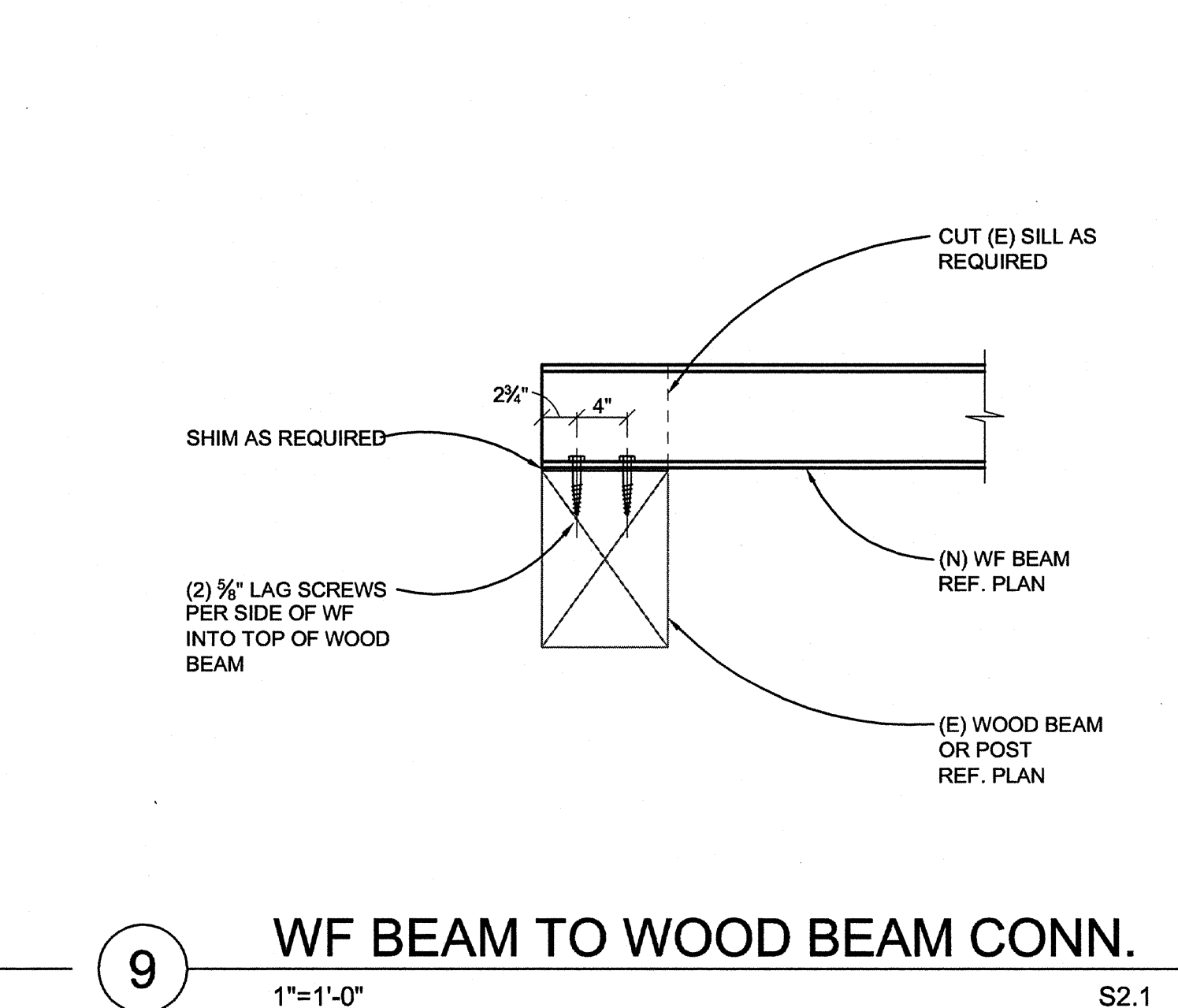
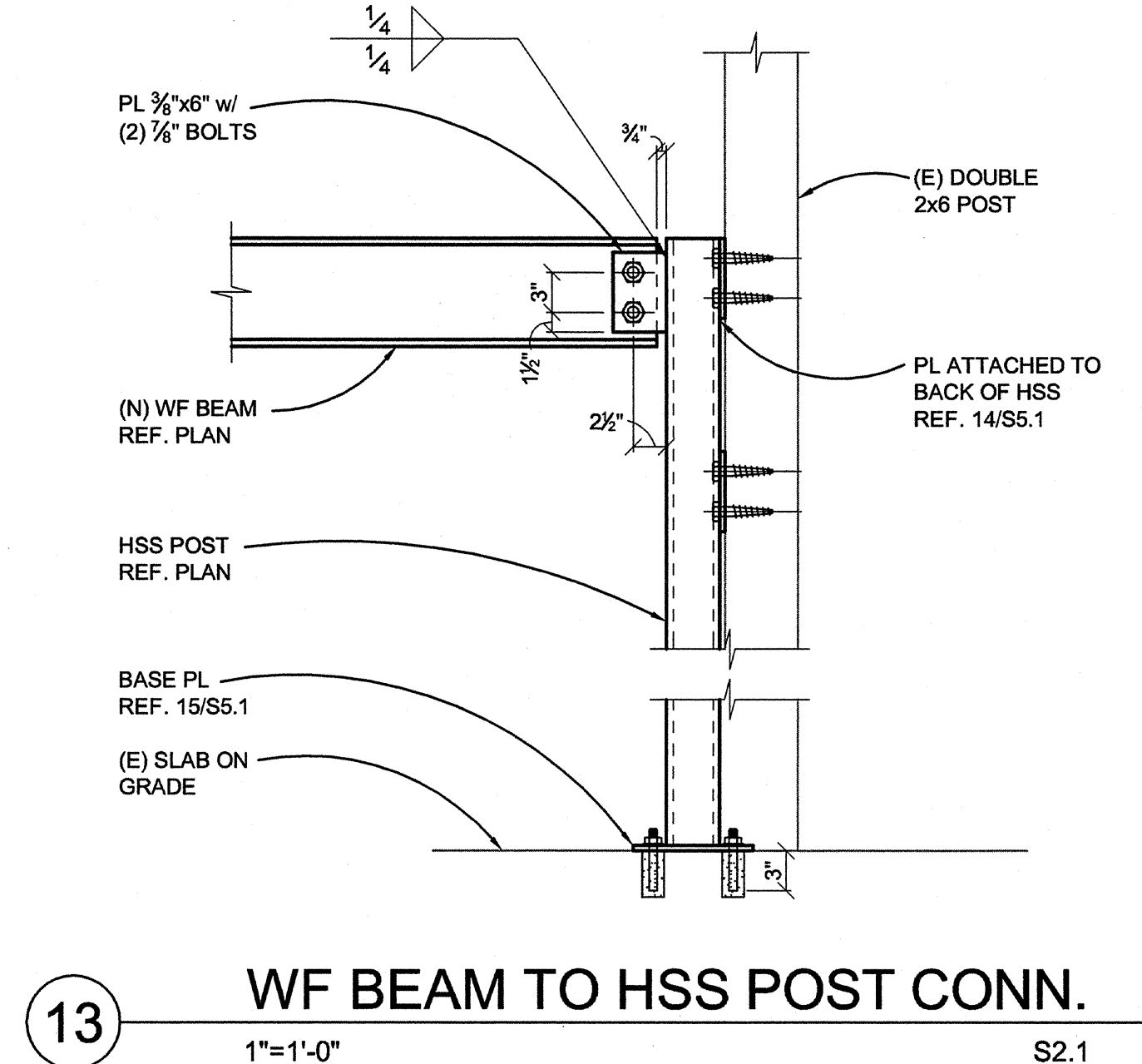
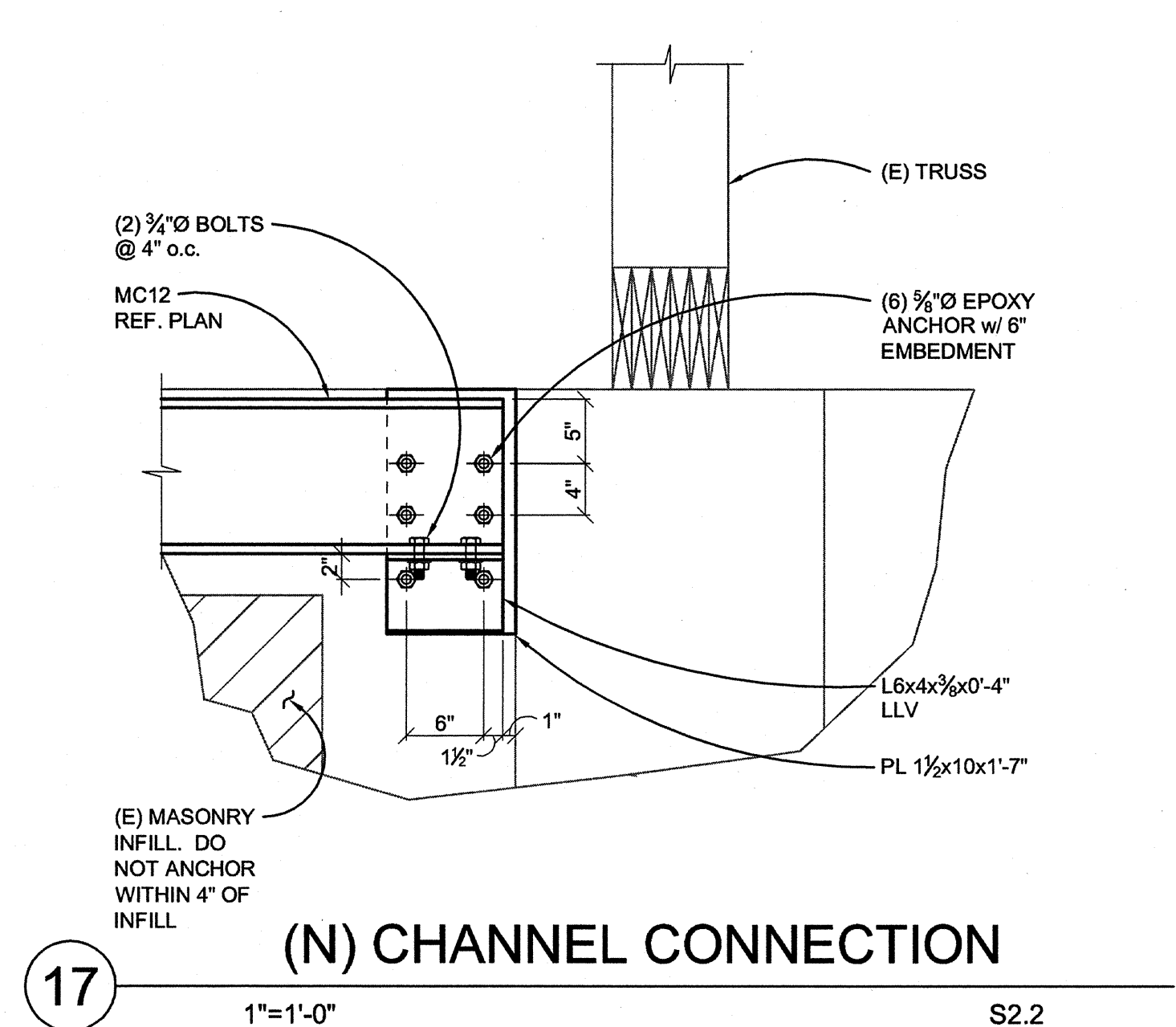
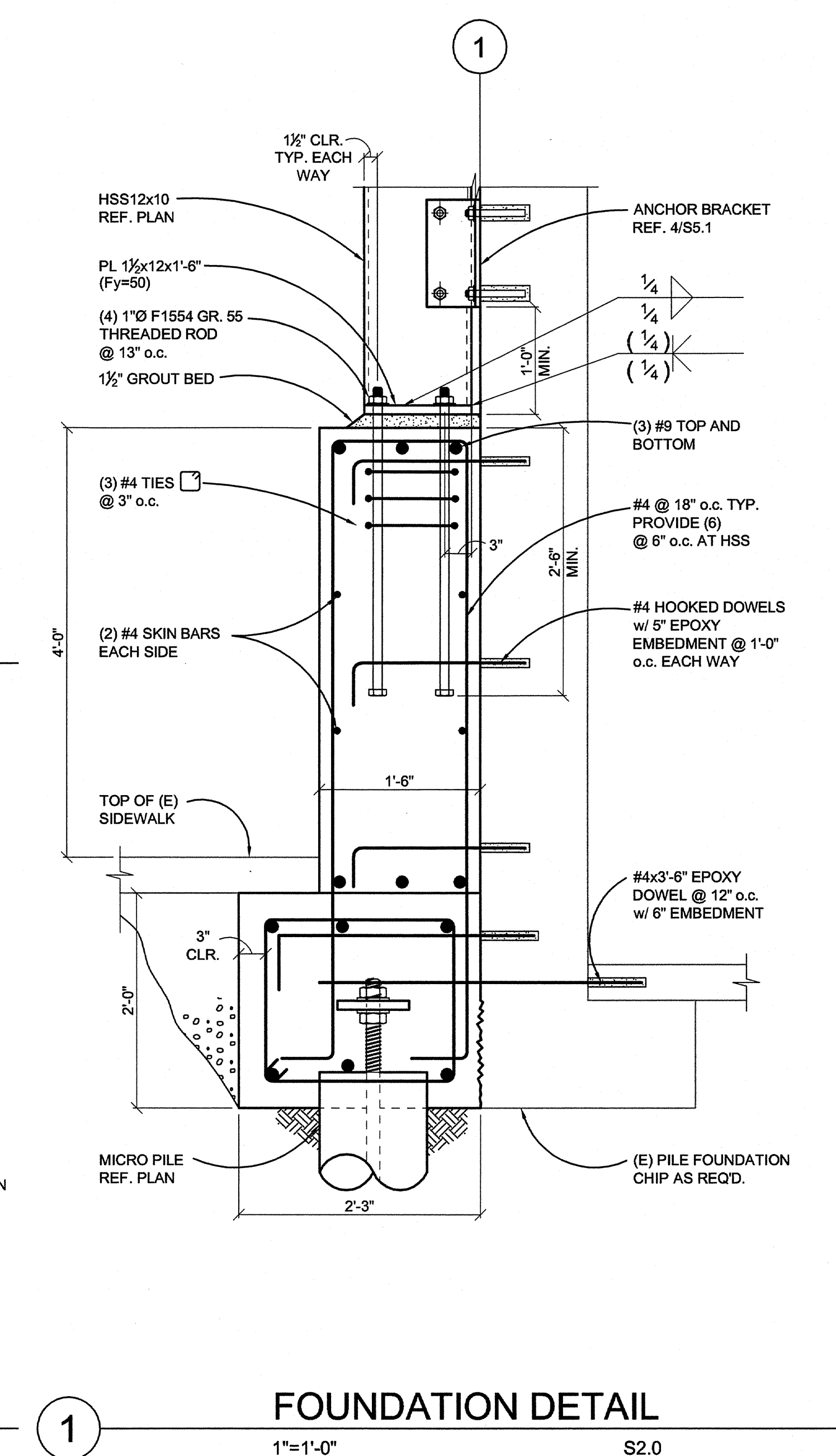
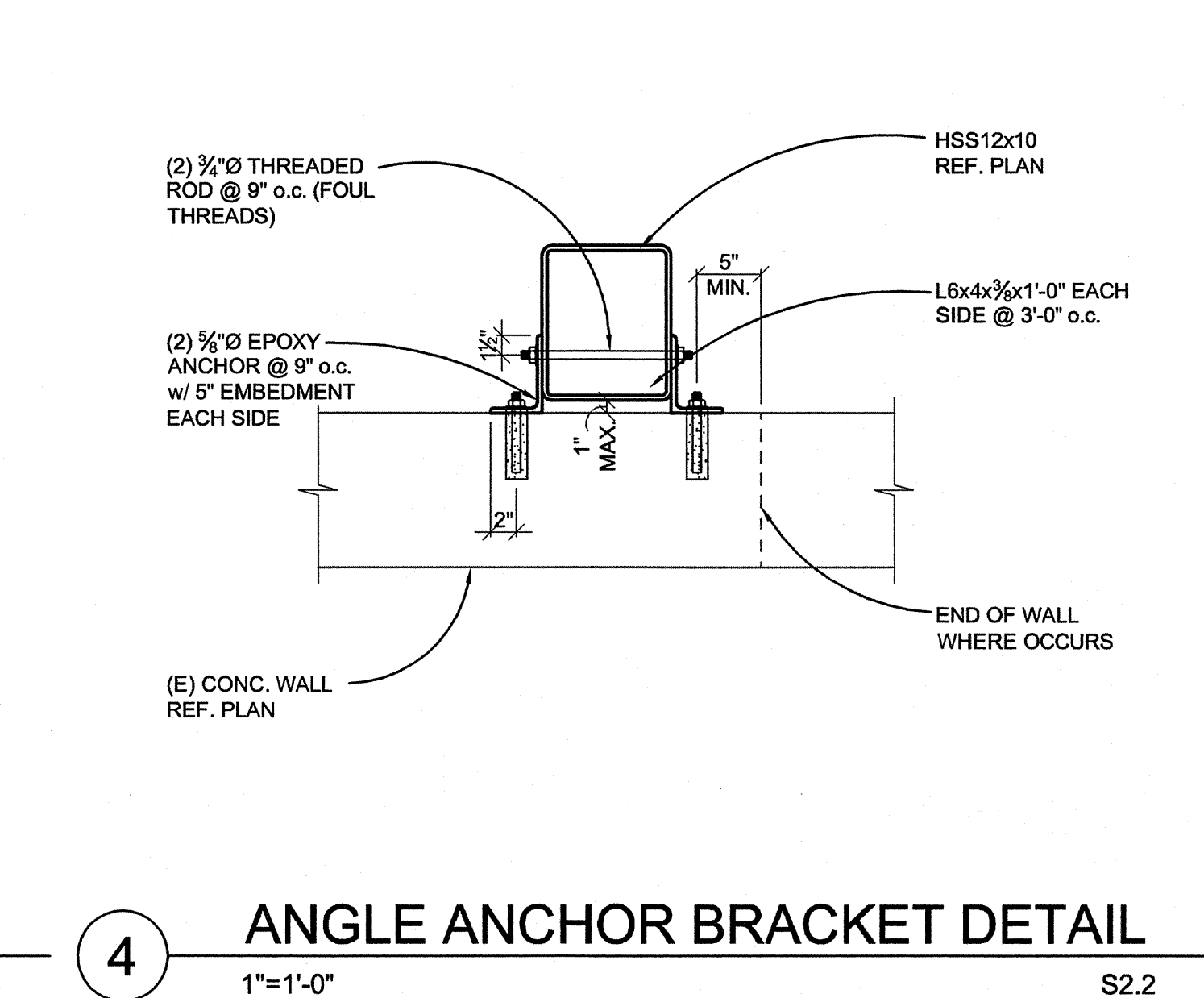
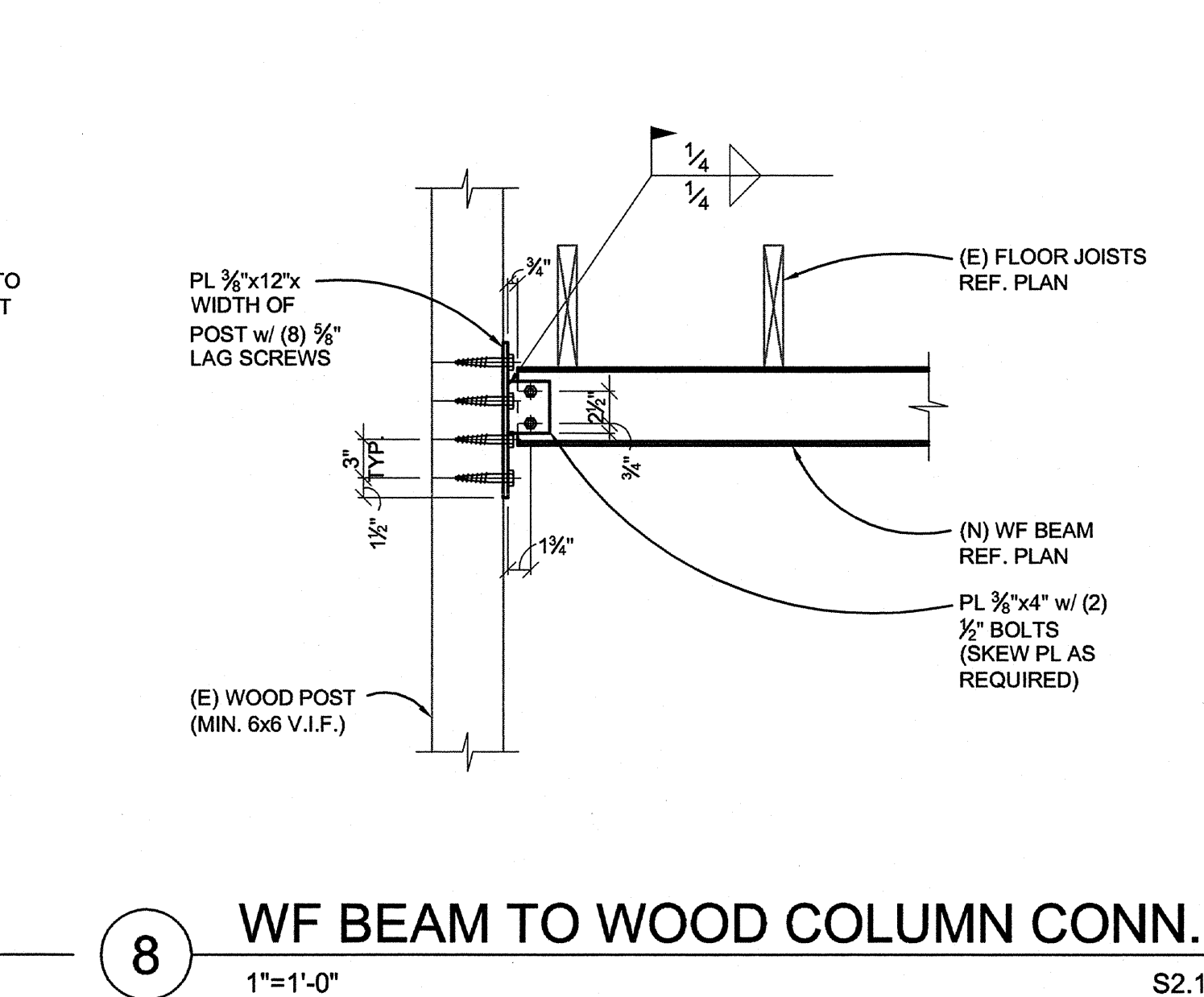
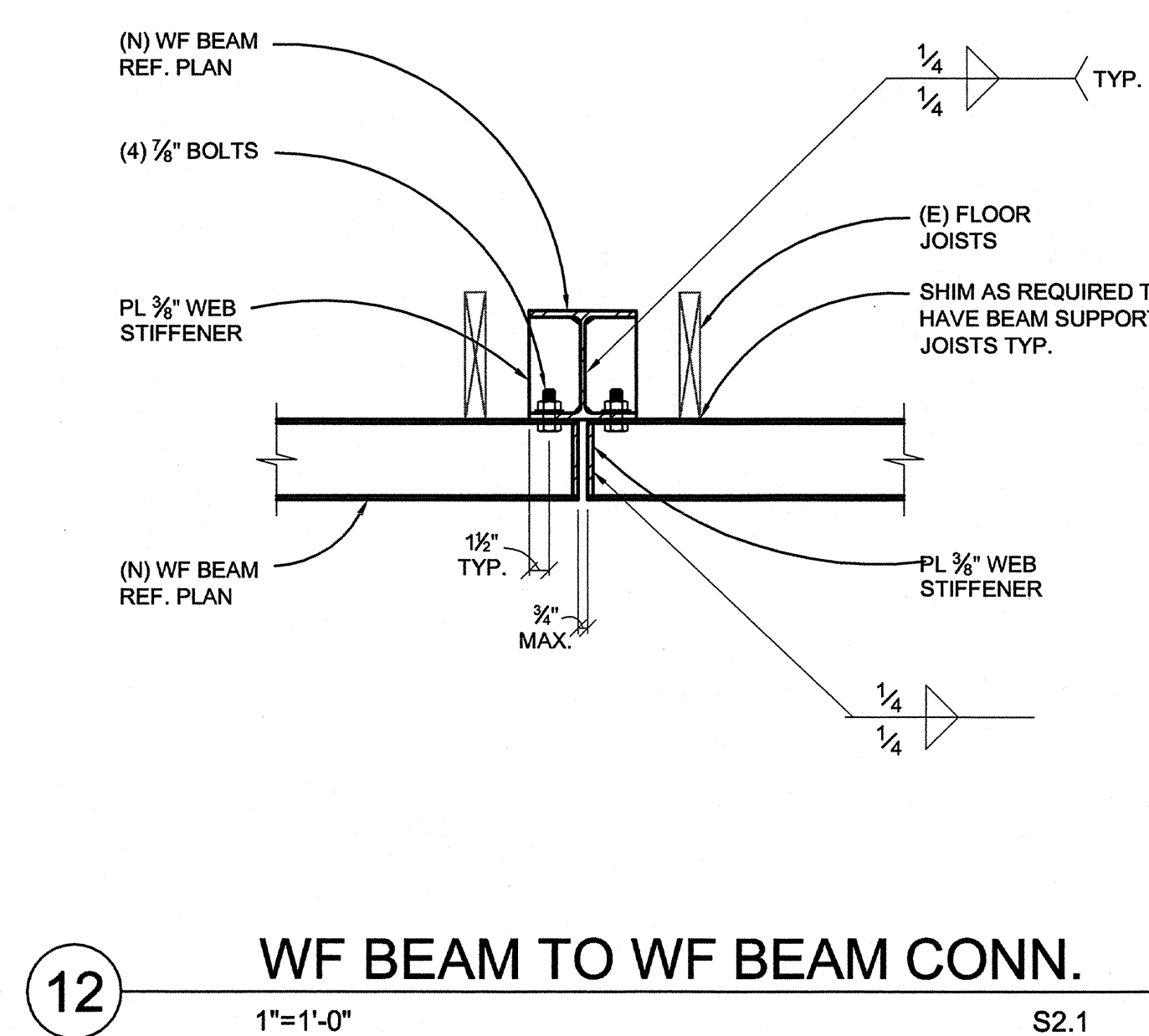
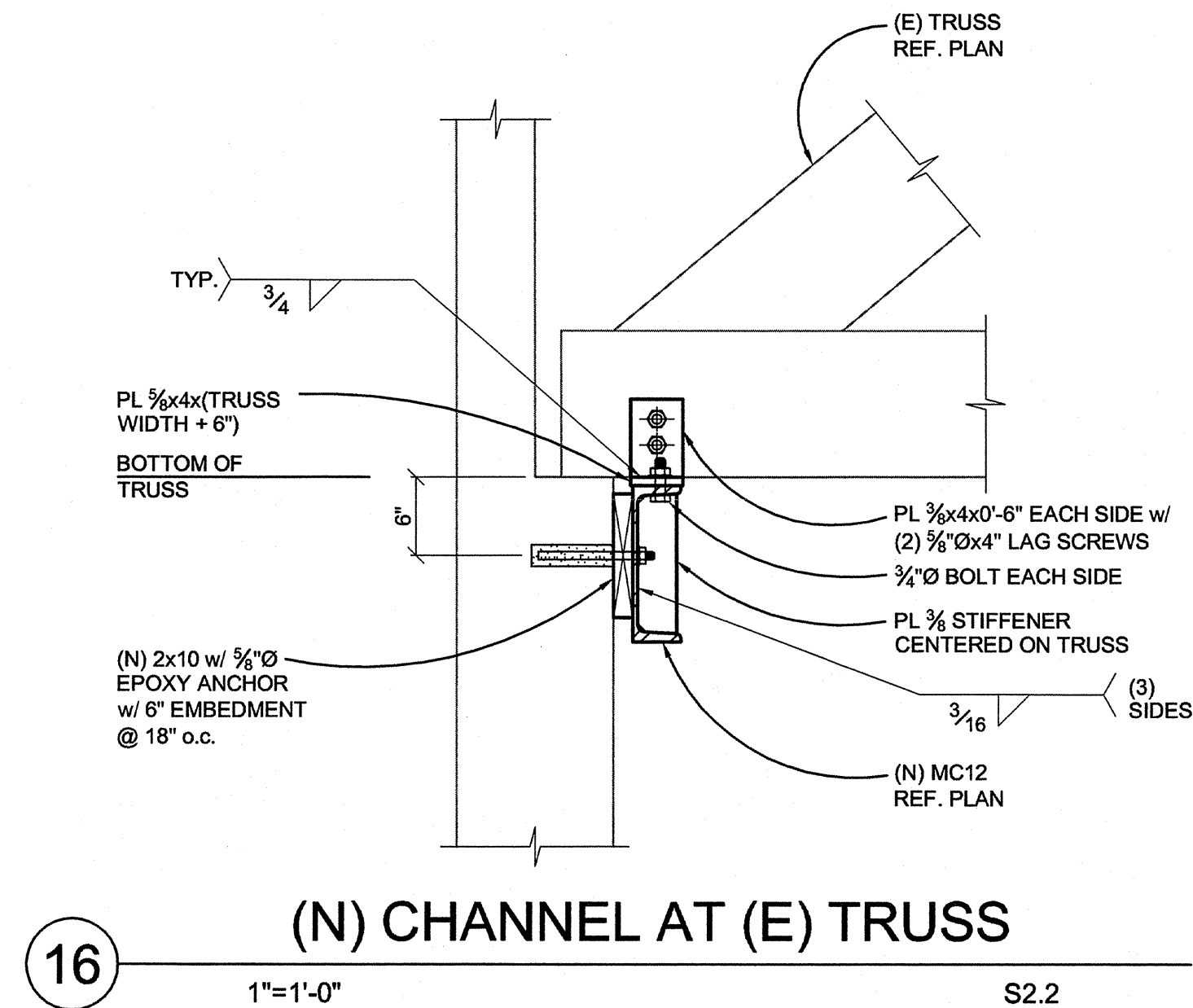
**100% CONSTRUCTION DOCUMENTS**

ROOF FRAMING  
PLAN

## S2.2

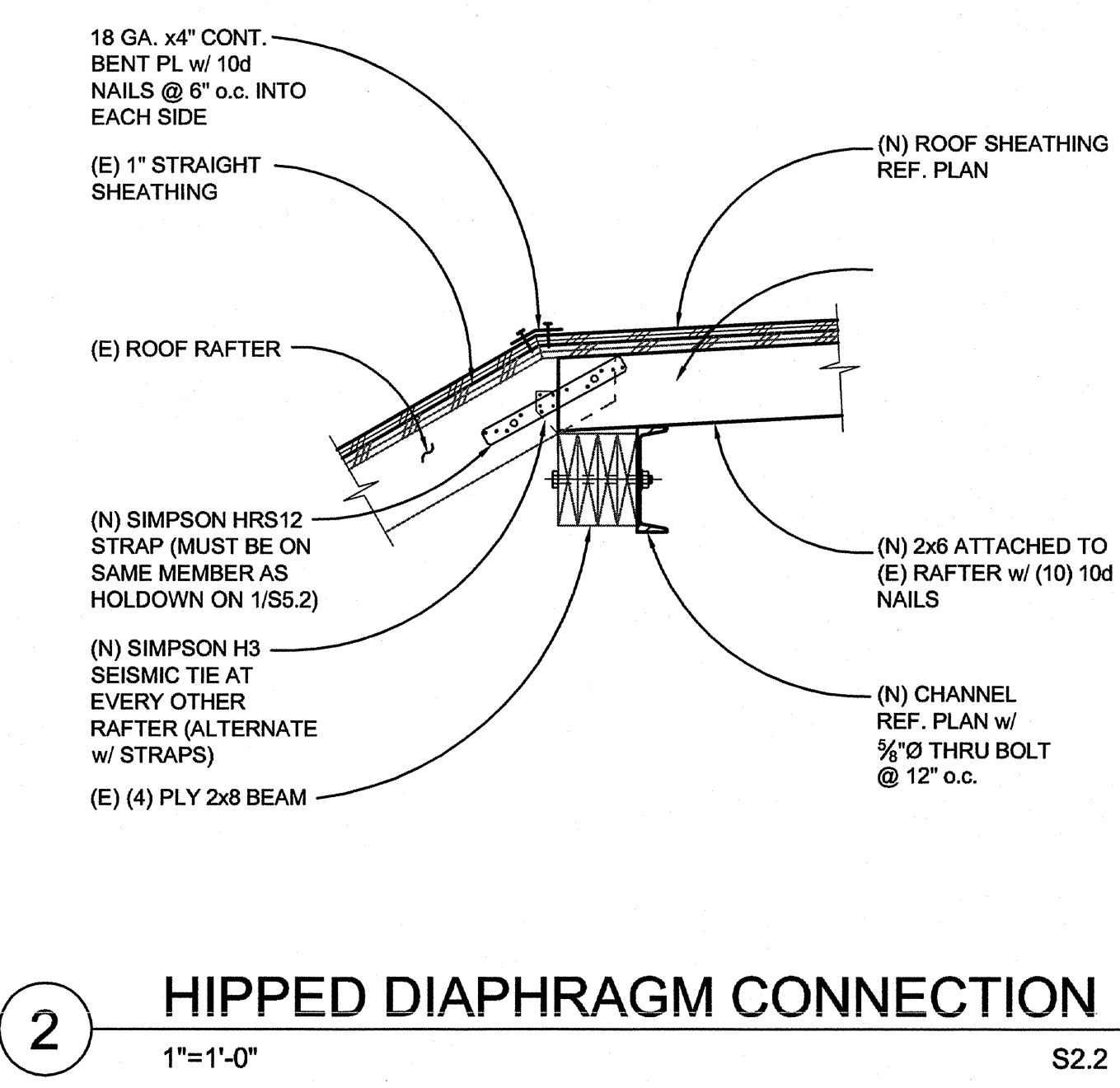
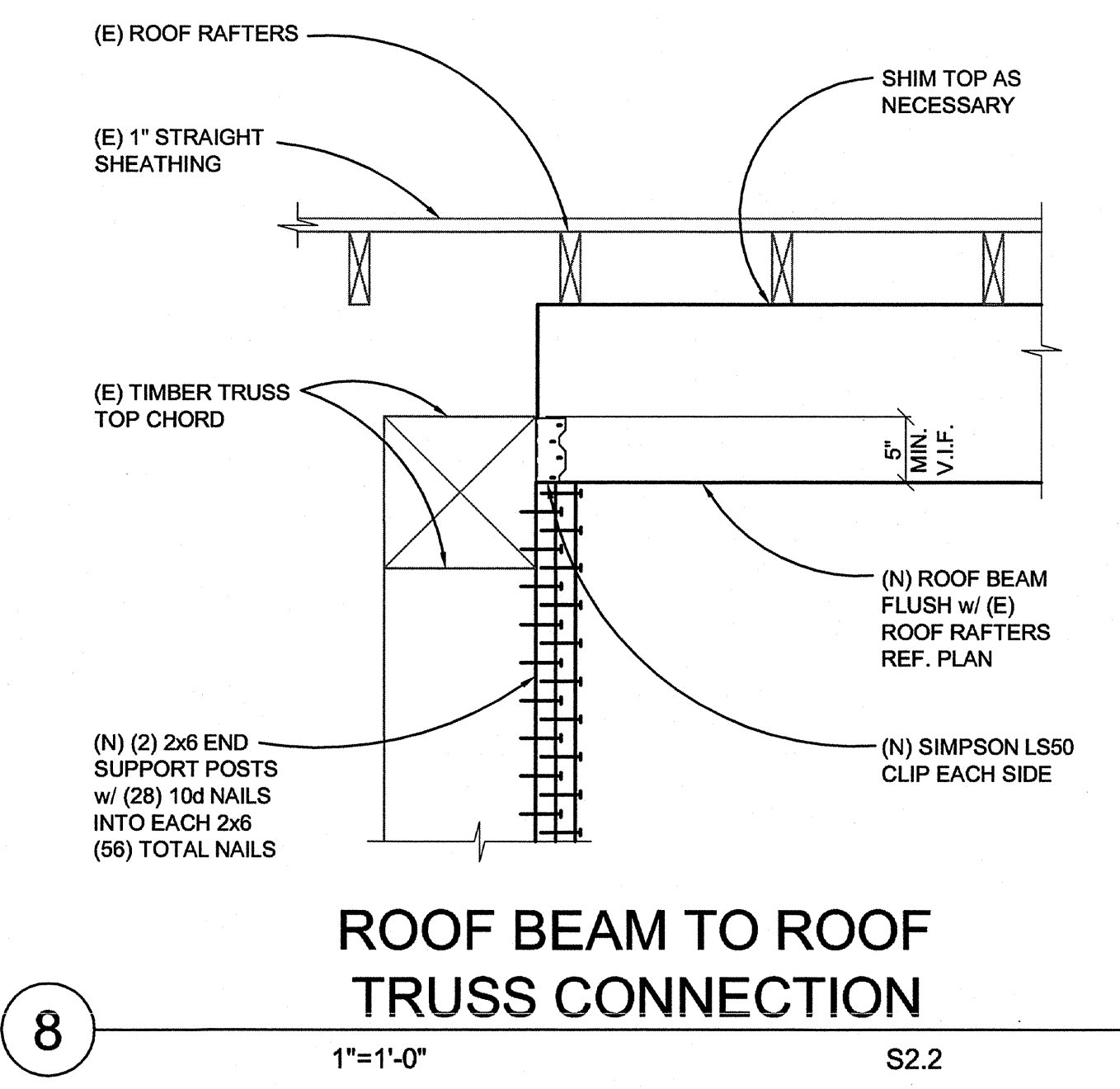
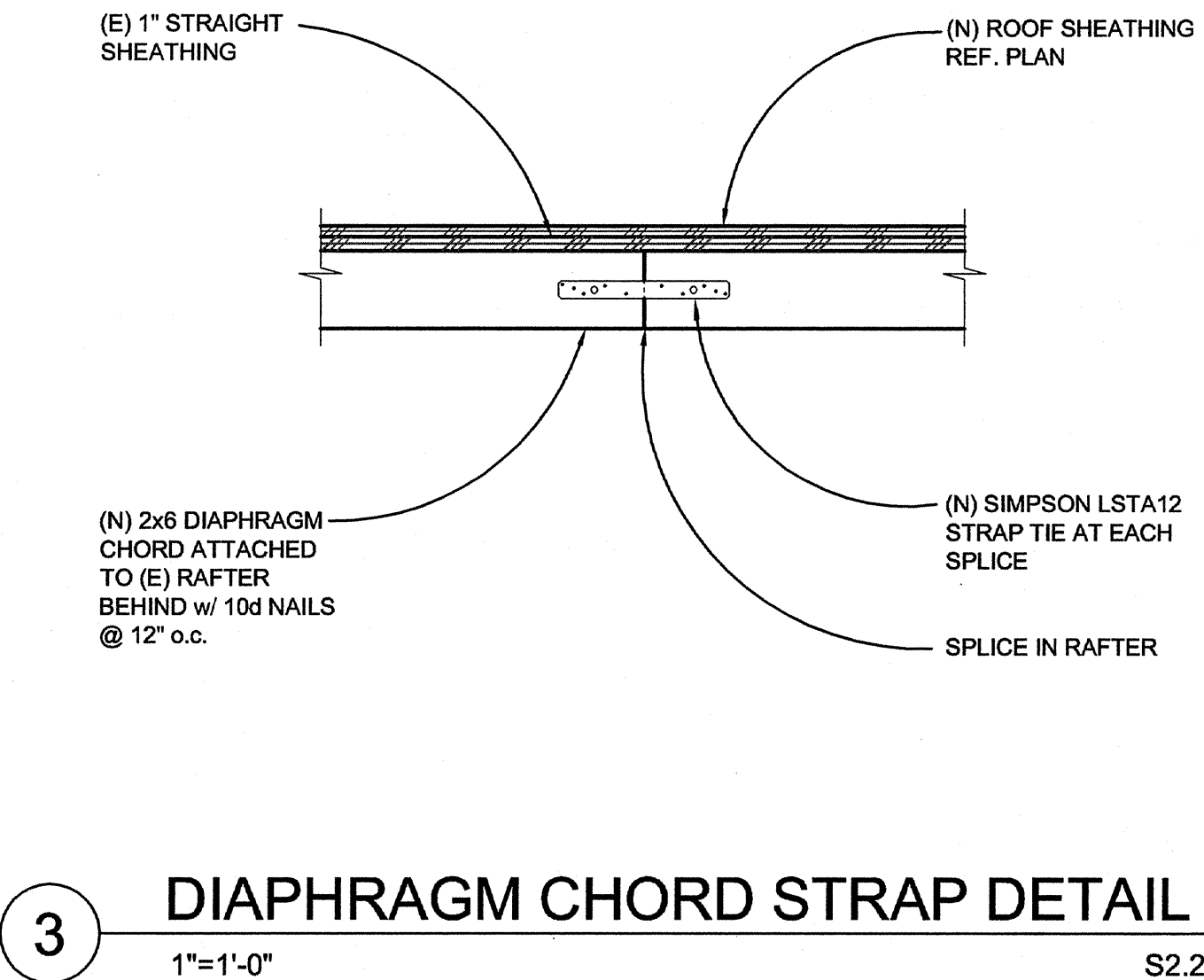
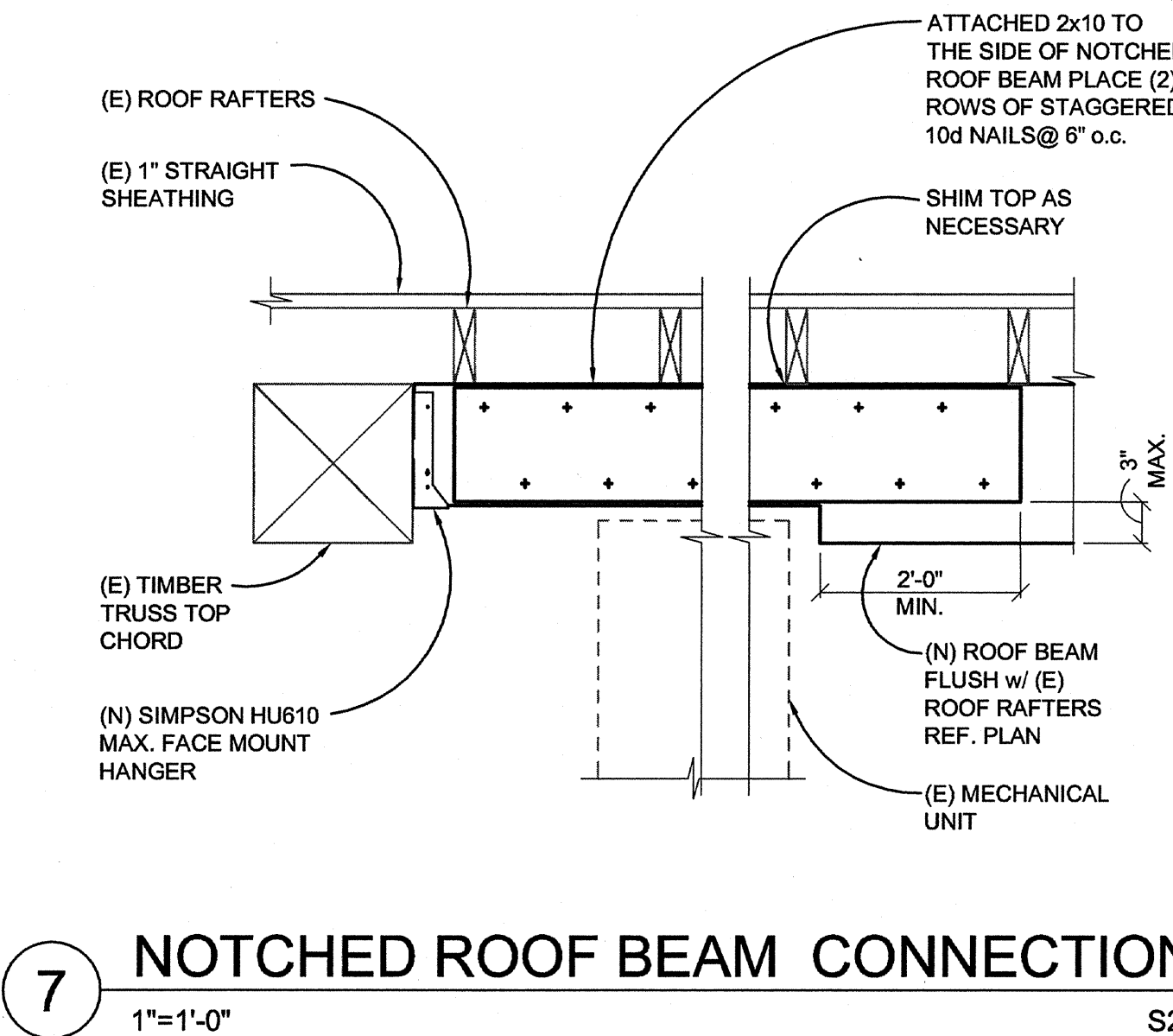
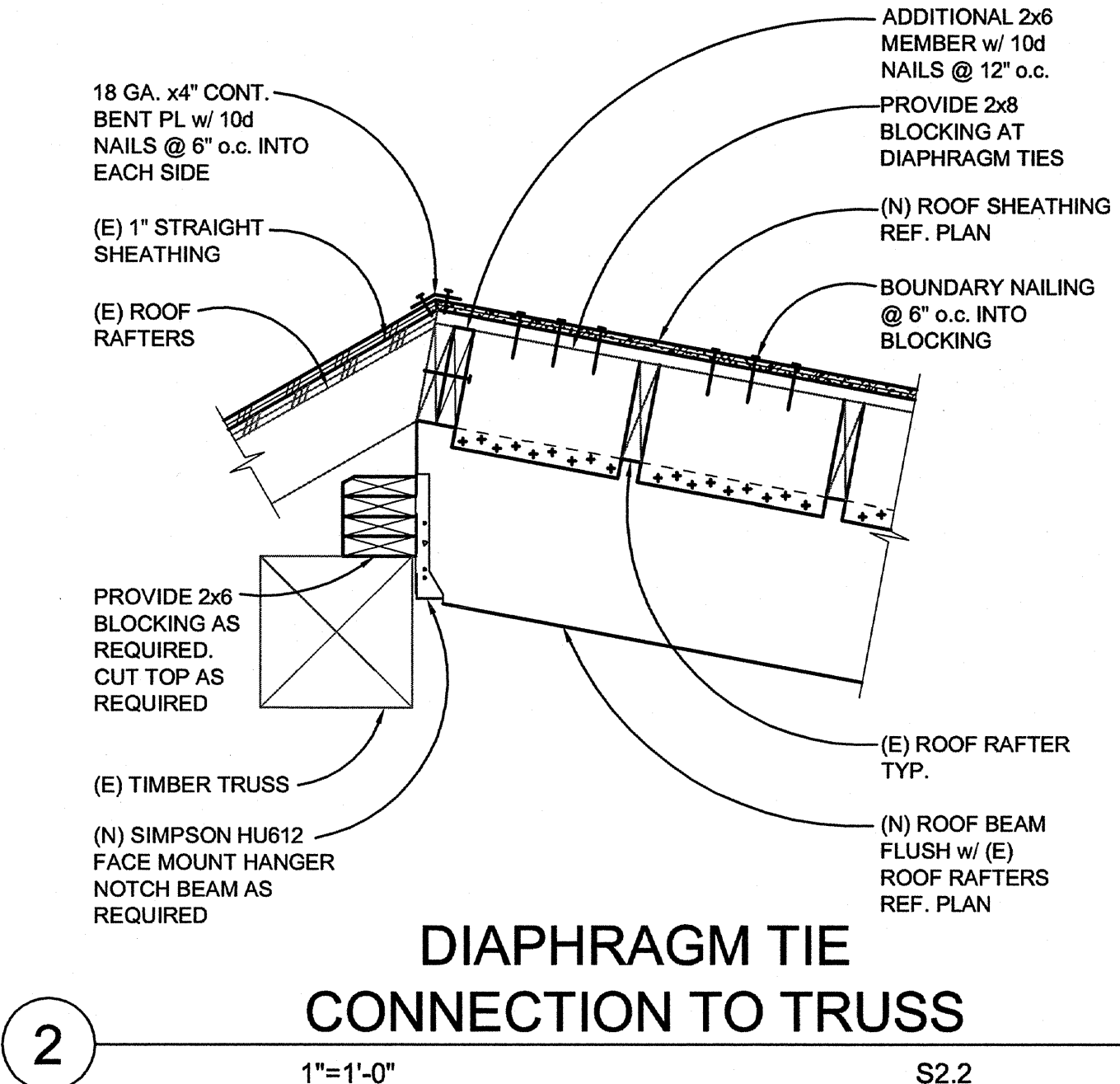
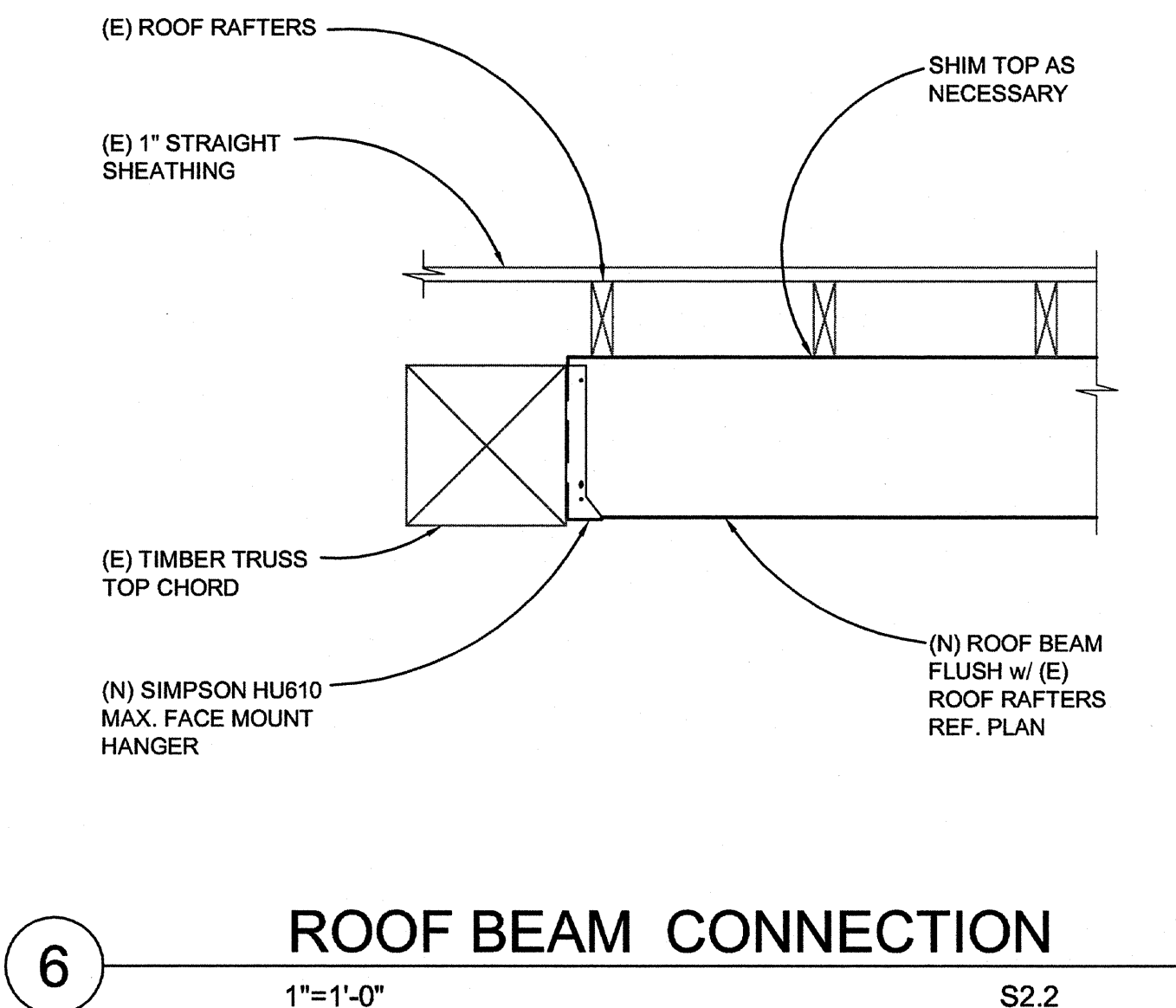
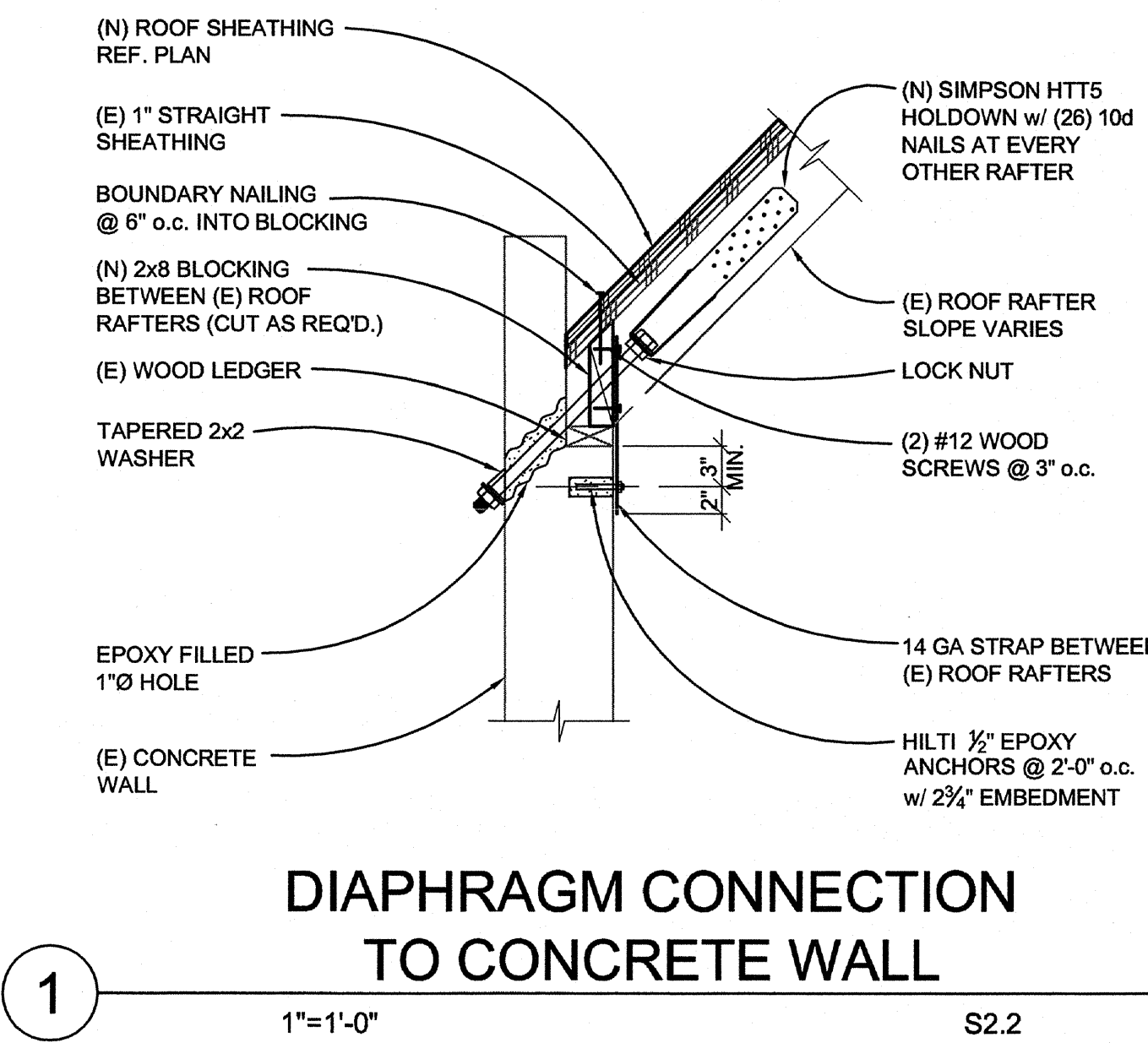
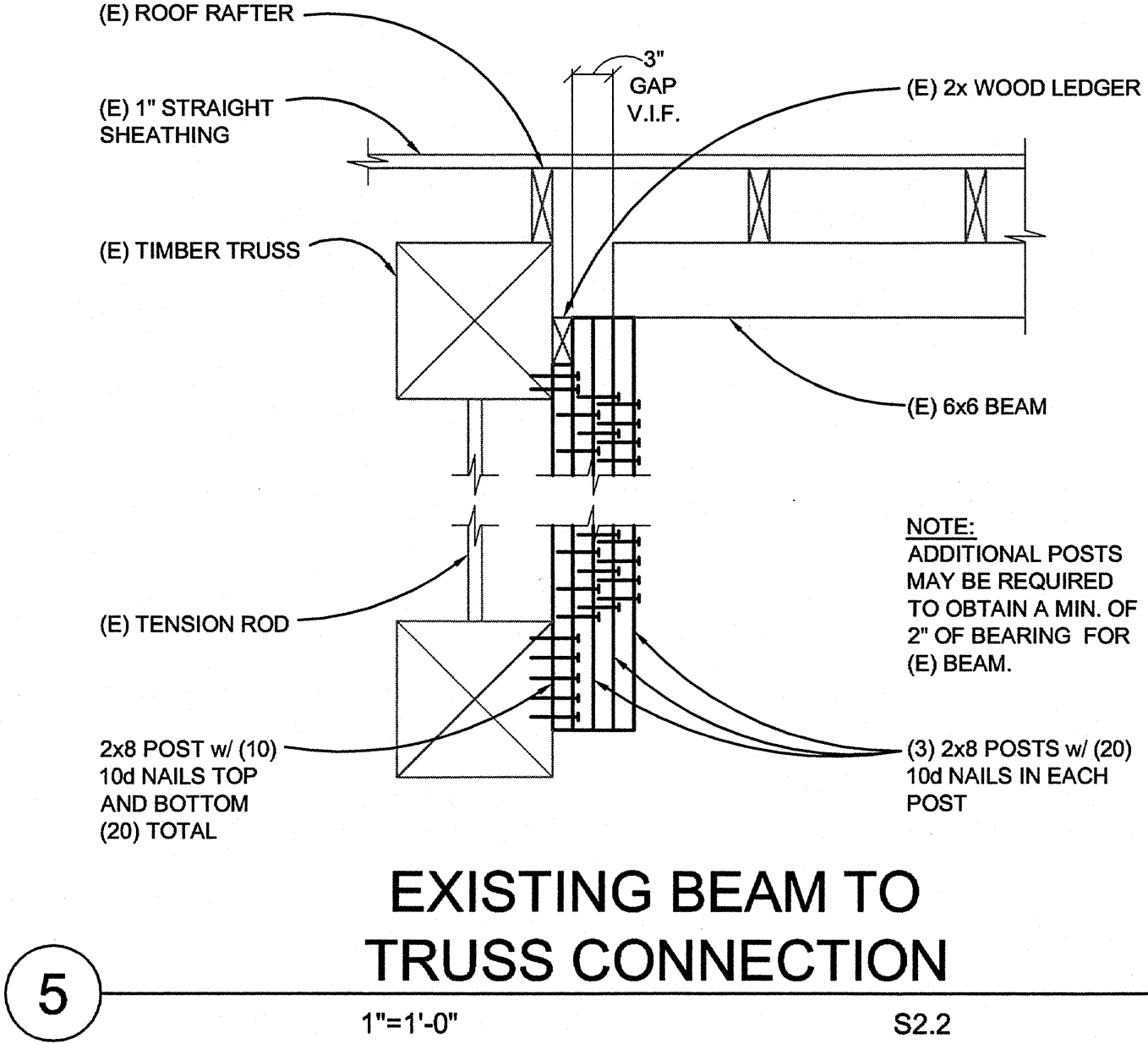
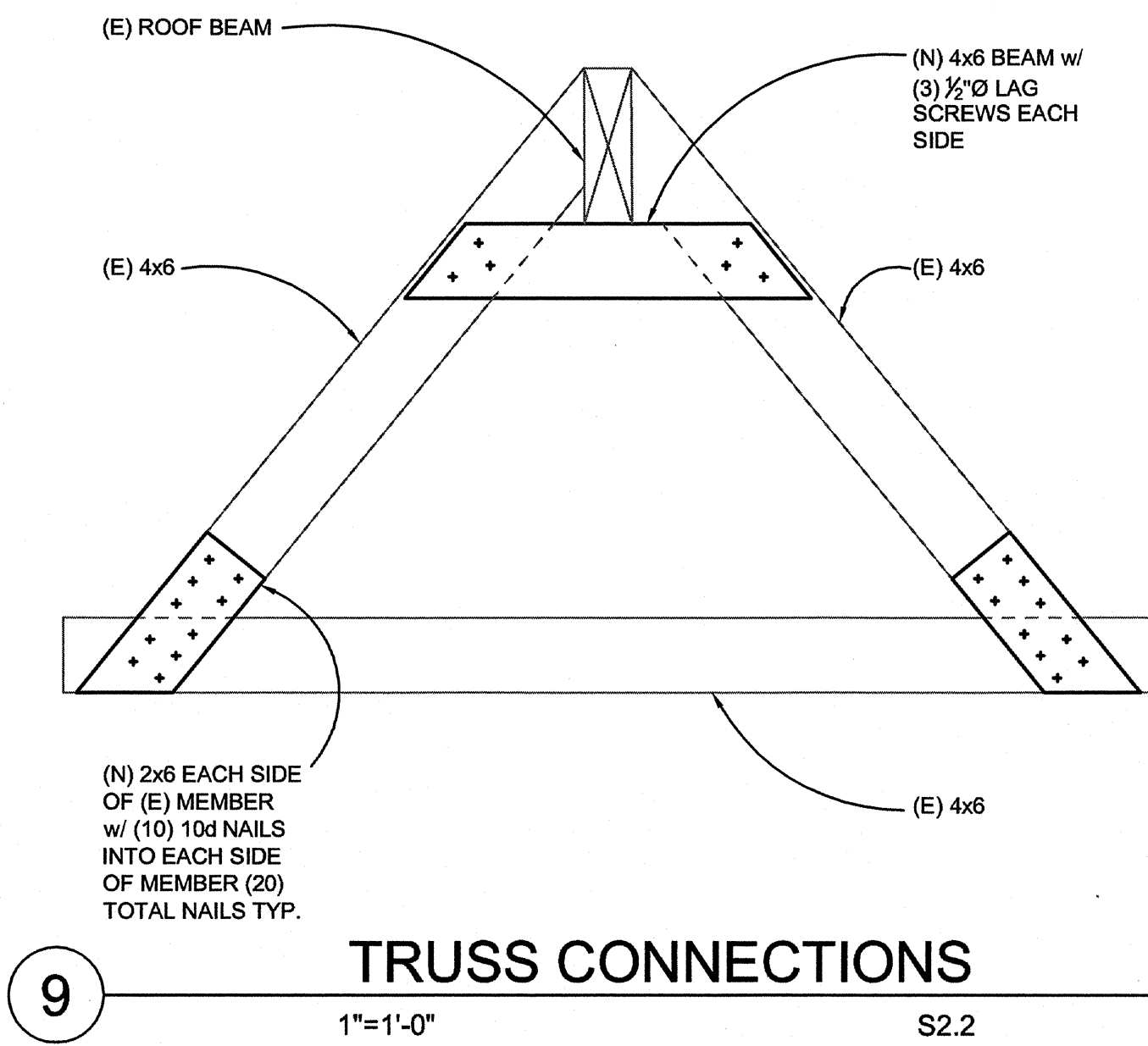


Fig. C:\p\2024\212024 Egyptian Theatre\212024\551.dwg TAB: Layout1  
PLOT: 12/24/24 at 10:53am By: scotts  
PLOT: 12/24/24





File: G:\a\2012\212024 Egyptian Theatre\212024S52.dwg TAB: Layout1  
Date: 2/2/2015 at 10:53am By: scotts  
XREF: 2/2/2015



REVISIONS		DATE	BY

CITY OF COOS BAY  
EGYPTIAN THEATRE PHASE 1 IMPROVEMENTS  
229 SOUTH BROADWAY  
COOS BAY, OREGON

**kpff**  
Consulting Engineers  
111 SW 5th Avenue  
Suite 2500  
Portland, OR 97204  
503-227-5251

PROJECT NO: 212024  
DRAWN: BUS  
CHECKED: RWV  
DATE: 09-28-2015

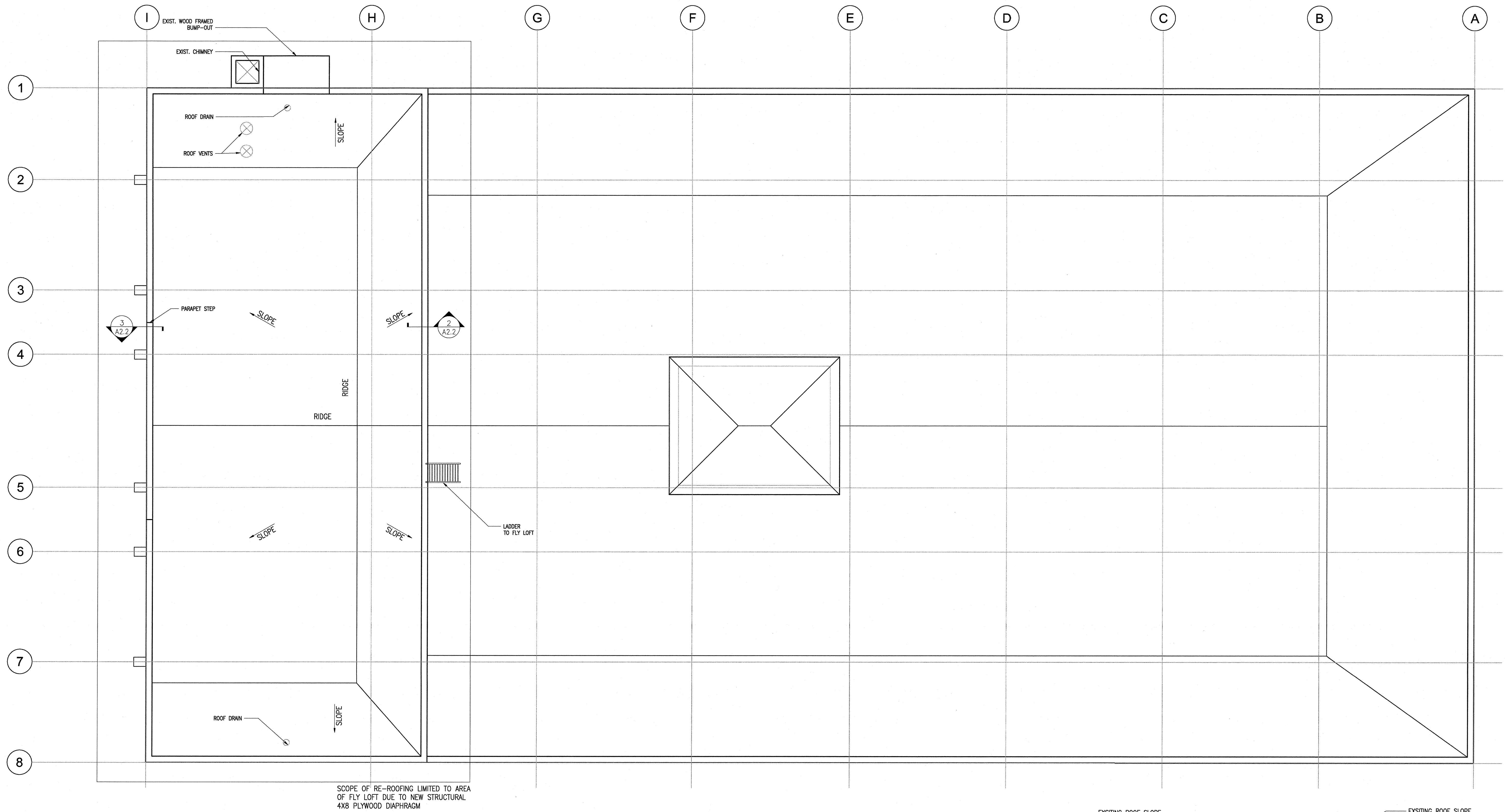
REGISTERED PROFESSIONAL  
ENGINEER  
17688  
OREGON  
BLAKE D. PATSY  
EXPIRES 12-31-14

100% CONSTRUCTION DOCUMENTS

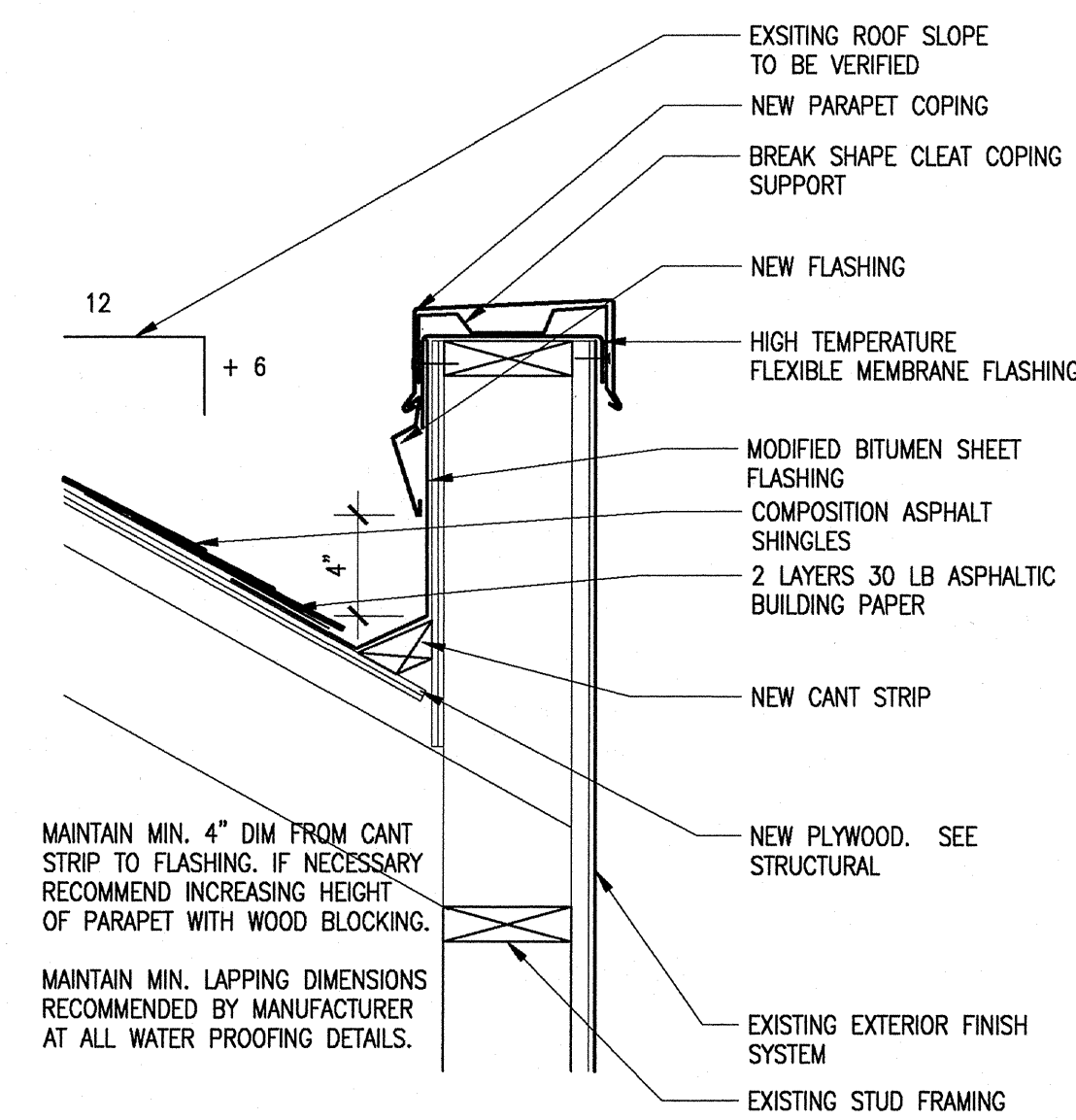
DETAILS

**S5.2**

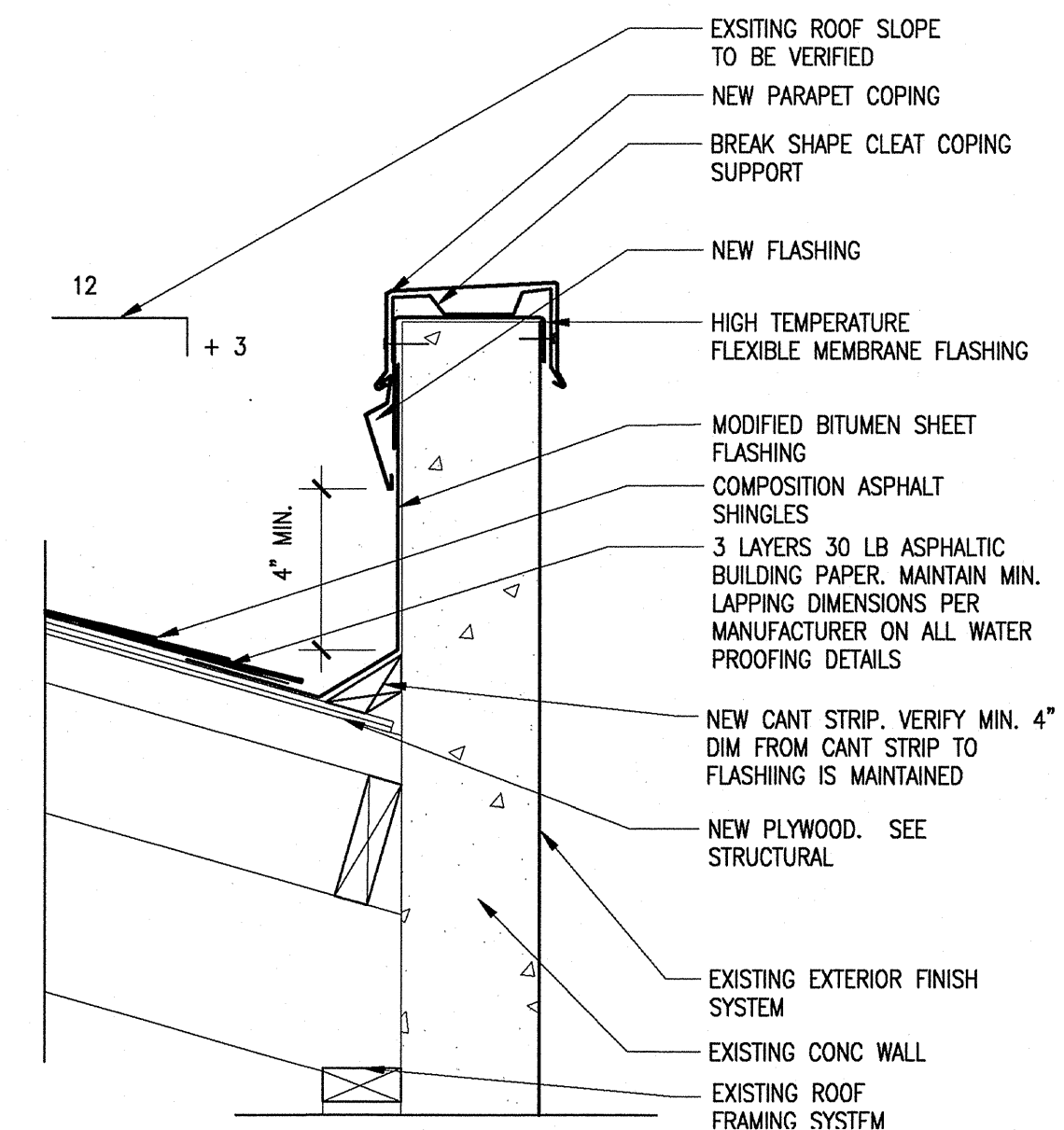




1 ARCHITECTURAL ROOF PLAN  
3/16"=1'-0"



2 NEW PARAPET COPING @ H.3  
1 1/2"=1'-0"



3 NEW PARAPET COPING @ I  
3"=1'-0"

Architect  
**woolfer architecture**  
107 SE Washington St. Ste. 440  
Portland, OR 97214  
503 724 0111

REVISIONS	BY	DATE

CITY OF COOS BAY  
EGYPTIAN THEATRE PHASE 1 IMPROVEMENTS  
229 SOUTH BROADWAY  
COOS BAY, OREGON

**kptf**  
Consulting Engineers  
111 SW 5th Avenue  
Portland, Oregon 97204  
503 227 3201

PROJECT NO: 212024  
DRAWN: BUS  
CHECKED: RHW  
DATE: 09-28-13

REGISTERED ARCHITECT  
Miles E. Woolfer  
PORTLAND, OR  
4872  
STATE OF OREGON

100% CONSTRUCTION DOCUMENTS

Roof Plan

A2.2